

Converting Colors

Hex(BCA6A2)

Have a look what the booklet for
Hex(BCA6A2) contains.

Hex(BCA6A2)	3
<i>Conversions</i>	4
<i>Details</i>	6
<i>Harmonies</i>	11
<i>Previews</i>	23
<i>Color Blindness Simulation</i>	26
<i>CSS Examples</i>	29

Color

Hex(BCA6A2)

Conversions

Conversions Part 1

Format	Color
Hex	BCA6A2
RGB	188, 166, 162
RGB Percent	74%, 65%, 64%
CMY	0.2627, 0.3490, 0.3647
CMYK	0.00, 0.12, 0.14, 0.26
HSL	9°, 16%, 69%
HSV	9°, 14%, 74%
XYZ	40.8968, 40.5724, 39.8582
YIQ	172.1220, 14.3960, 3.4200

Conversions

Conversions Part 2

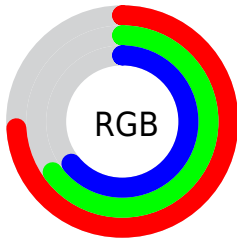
Format	Color
RYB	188, 167, 162
Decimal	12363426
CIELab	69.88, 7.32, 4.99
CIElCh	70, 8.861, 34.279
Yxy	40.5724, 0.3371, 0.3344
Android (android.graphics.Color)	4290553506 (0xFFBCA6A2)
YUV	172.1220, -4.9901, 13.9250
Hunter-Lab	63.6965, 3.1385, 7.4867

Details

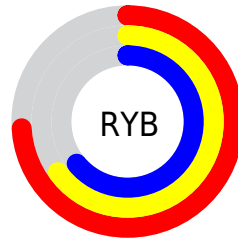
The Hex color **BCA6A2** is a light color, and the websafe version is hex **999999**. A complement of this color would be **A2B8BC**, and the grayscale version is **ACACAC**.

A 20% lighter version of the original color is **F4DDD9**, and **87726E** is the 20% darker color. If you saturate the color by 10%, you get **BC968F**, and if you desaturate by 10%, it is **BCB6B5**.

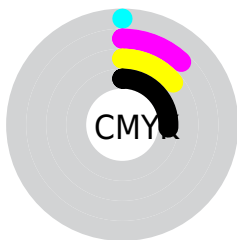
Distribution



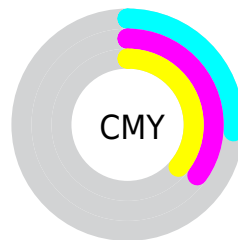
- Red (74%)
- Green (65%)
- Blue (64%)



- Red (74%)
- Yellow (65%)
- Blue (64%)



- Cyan (0%)
- Magenta (12%)
- Yellow (14%)
- Black (26%)



- Cyan (26%)
- Magenta (35%)
- Yellow (36%)

Brightness & Saturation Gradients

These gradients show how the Hex color BCA6A2 changes by changing the brightness by 10 percent. The first figure shows a shift by +10% for each color and the second figure -10%.

Similar to the brightness gradients but the following saturation gradients show a change of the Hex color BCA6A2 by changing the saturation by 10% instead.



BCA6A2



BCA6A2

FFFFFF



A18C88



F4DDD9



87726E



FFFAF5



6D5A56



55423F



3D2C29



271715



100000



000000



BCA6A2



BCA6A2

 BC968F

 BCB6B5

 BC867C

 BCC6C8

 BC766A

 BCD6DA

 BC6657

 BCE6ED

 BC5644

 BCF6FF

 BC4731

 BCFFFF

 BC371E

 BC270C

 BC1D00

Harmonies

Analogous

The Analogous color harmony consists of three colors that are next to each other on the color wheel.



BCA5AA



BCA6A2



B8A89D

Triad

The Triadic color harmony groups three colors that are evenly spaced from another and form a triangle on the color wheel.



BCA6A2



9EAFA4



A4ABBB

Complementary

The Complementary color scheme is a pair of colors which are on the opposite of each other on the color wheel.



BCA6A2



A2B8BC

Split Complementary

Split-complementary colors differ from the complementary color scheme. The scheme consists of three colors, the original color and two neighbors of the complement color.



9BADB9



BCA6A2



98B0AC

Square

The Square scheme is like the rectangle color scheme, but the four colors are evenly spaced on the color wheel.



BCA6A2



A7AD9D



97AFB3



AEA8B8

Rectangle

The Rectangle color scheme consists of four colors that form a rectangle on the color wheel.



BCA6A2



B3AA9B



97AFB3



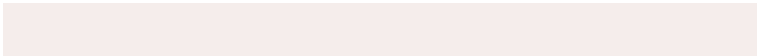
A1ACBB

Sweetspot

The Sweet Spot groups the original color and five complimentary colors.



BCA6A2



F5EDEB



BCA2B8



7A7574



FAFafa



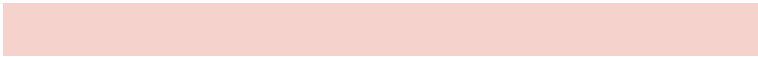
7A7A7A

Same Dimension

The Same Dimension uses a secret algorithm to generate beautiful new colors.



BCA6A2



F5D2CB



BCB3A2



5E5655



9E1800



1F0500

Inverse Universe

The Inverse Universe completely reimagines the original color for something new.



A2B8BC



CBEEF5



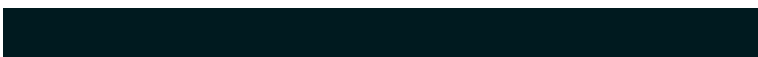
A2ABBC



555D5E



00869E



001A1F

Previews

White Background



This preview shows how the Hex color BCA6A2 looks on a white background.

Color Contrast Check

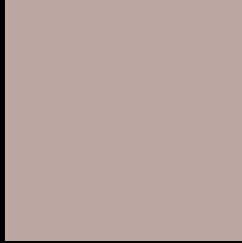
Large Text (above 18pt) WCAG AA × Fail

Any Text WCAG AA × Fail

Large Text (above 18pt) WCAG AAA × Fail

Any Text WCAG AAA × Fail

Black Background



This preview shows how the Hex color BCA6A2 looks on a black background.

Color Contrast Check

Large Text (above 18pt) WCAG AA ✓ Pass

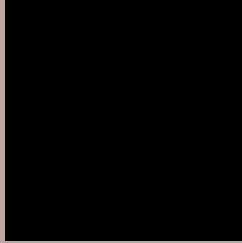
Any Text WCAG AA ✓ Pass

Large Text (above 18pt) WCAG AAA ✓ Pass

Any Text WCAG AAA ✓ Pass

If you want to check with other color combinations, try the [Color Contrast Checker](#).

Hex BCA6A2 Background



This preview shows how black text looks on a background with the Hex color BCA6A2.

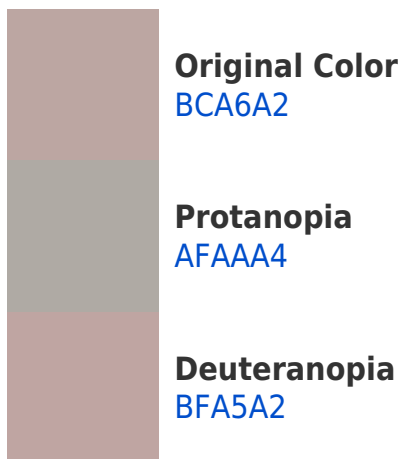


This preview shows how white text looks on a background with the Hex color BCA6A2.

Color Blindness Simulation

Color vision deficiency is a very complex topic, and I could not describe the different causes any better than Wikipedia does, so if you want to learn more, you should check out their [article about color blindness](#).

Dichromacy





Tritanopia
BEA4B1

Trichromacy



Original Color
BCA6A2

Protanomaly
B4A9A3

Deuteranomaly
BEA5A2

Tritanomaly
BDA5AC

Monochromacy



Original Color
BCA6A2

Achromatopsia
ACACAC

Achromatomaly
B2AAA8

CSS Examples

Text

The CSS property to change the color of the text to Hex BCA6A2 is called "color". The color property can be set on classes, ids or directly on the HTML element.

This example shows how text in the color #BCA6A2 looks like.

```
.text, #text, p{  
    color:#BCA6A2  
}
```

If you want to add a text shadow in that color use the text-shadow property, you can generate a text shadow directly with our [CSS Text Shadow Generator](#).

Here you see how black text with a 4 pixel #BCA6A2 colored shadow looks like.

```
.shadow{ text-shadow: 4px 4px 2px #BCA6A2
}
```

Border

The CSS property to change the border of an element to Hex BCA6A2 is called "border". The border property can be set on classes, ids or directly on the HTML element.

This example shows the color as border, it can be applied via the CSS property "border" or "border-color".

```
.border, #border, table{ border:4px solid
#BCA6A2 }
```

If only the border color should be changed use the property `border-color`.

```
.border{ border-color:#BCA6A2 }
```

If you want to add a box shadow in that color use:

Here you see how a box with a 4 pixel #BCA6A2 colored shadow looks like.

```
.boxshadow{ -moz-box-shadow:4px 4px 4px  
4px #BCA6A2; -webkit-box-shadow:4px 4px  
4px 4px #BCA6A2; box-shadow:4px 4px 4px  
4px #BCA6A2 }
```

Background

The CSS property to change the background color of an element to Hex BCA6A2 is called "background". The background property can be set on classes, ids or directly on the HTML element.

```
.background, #background, body{  
background:#BCA6A2 }
```

If only the background color should be changed can be used:

```
.background{ background-color:#BCA6A2 }
```

This example shows the color as background, it is applied via the CSS property "background".

To optimize and compress your CSS code, you can use our [online CSS compressor and optimizer](#) based on csstidy. If you want to create a linear or radial gradient as background or border, check our [CSS Gradient Generator](#).

Hey! You found this booklet interesting? Support Converting Colors with the new Membership Option!

The pro membership hides all ads, plus gives you double the colors in the color bucket, and more awesome pro features!

[Learn more, Memberships starting at \\$2.50/m!](#)

**Follow me
on Twitter!**

@ConvertingColor