

# Converting Colors

Hex(BCAB9A)

Have a look what the booklet for  
Hex(BCAB9A) contains.

<b>Hex(BCAB9A)</b> .....	3
<i><b>Conversions</b></i> .....	4
<i><b>Details</b></i> .....	6
<i><b>Harmonies</b></i> .....	11
<i><b>Previews</b></i> .....	23
<i><b>Color Blindness Simulation</b></i> .....	26
<i><b>CSS Examples</b></i> .....	29

# **Color**

**Hex(BCAB9A)**

# Conversions

## Conversions Part 1

Format	Color
Hex	BCAB9A
RGB	188, 171, 154
RGB Percent	74%, 67%, 60%
CMY	0.2627, 0.3294, 0.3961
CMYK	0.00, 0.09, 0.18, 0.26
HSL	30°, 20%, 67%
HSV	30°, 18%, 74%
XYZ	41.1347, 42.1503, 36.5396
YIQ	174.1450, 15.5890, -1.6830

# Conversions

## Conversions Part 2

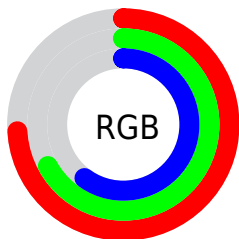
Format	Color
<a href="#">RYB</a>	<a href="#">188, 188, 154</a>
Decimal	<a href="#">12364698</a>
CIELab	<a href="#">70.97, 3.31, 10.97</a>
CIELCh	<a href="#">71, 11.462, 73.190</a>
Yxy	<a href="#">42.1503, 0.3433, 0.3518</a>
Android (android.graphics.Color)	<a href="#">4290554778 (0xFFBCAB9A)</a>
YUV	<a href="#">174.1450, -9.9315, 12.1508</a>
Hunter-Lab	<a href="#">64.9232, -0.5200, 12.0771</a>

# Details

The Hex color **BCAB9A** is a light color, and the websafe version is hex **999999**. A complement of this color would be **9AABBC**, and the grayscale version is **AEAEAE**.

A 20% lighter version of the original color is **F4E2D0**, and **867767** is the 20% darker color. If you saturate the color by 10%, you get **BCA287**, and if you desaturate by 10%, it is **BCB4AD**.

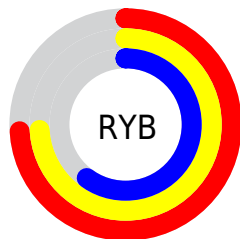
# Distribution



Red (74%)

Green (67%)

Blue (60%)



Red (74%)

Yellow (74%)

Blue (60%)

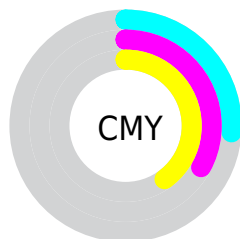


Cyan (0%)

Magenta (9%)

Yellow (18%)

Black (26%)



Cyan (26%)

Magenta (33%)

Yellow (40%)

# Brightness & Saturation Gradients

These gradients show how the Hex color BCAB9A changes by changing the brightness by 10 percent. The first figure shows a shift by +10% for each color and the second figure -10%.

Similar to the brightness gradients but the following saturation gradients show a change of the Hex color BCAB9A by changing the saturation by 10% instead.



 BCAB9A

 BCAB9A

FFFFFF

 A19180

 F4E2D0

 867767

 FFFFED

 6D5E4F

 544738

 3D3022

 271B0D

 0E0100

 000000

 BCAB9A

 BCAB9A

 BCA287

 BCB4AD

 BC9874

 BCBEC0

 BC8F62

 BCC7D2

 BC854F

 BCD1E5

 BC7C3C

 BCDAF8

 BC7329

 BCE3FF

 BC6916

 BCEDFF

 BC6004

 BCF6FF

 BC5E00

 BCFFFF

# Harmonies

## Analogous

The Analogous color harmony consists of three colors that are next to each other on the color wheel.



C3A8A0



BCAB9A



B1AE99

# Triad

The Triadic color harmony groups three colors that are evenly spaced from another and form a triangle on the color wheel.



BCAB9A



94B4B2



B5AABD

# Complementary

The Complementary color scheme is a pair of colors which are on the opposite of each other on the color wheel.



BCAB9A



9AABBC

# Split Complementary

Split-complementary colors differ from the complementary color scheme. The scheme consists of three colors, the original color and two neighbors of the complement color.



A8ADC2



BCAB9A



95B3BC

# Square

The Square scheme is like the rectangle color scheme, but the four colors are evenly spaced on the color wheel.



BCAB9A



9BB3A7



9CB0C1



BFA7B4

# Rectangle

The Rectangle color scheme consists of four colors that form a rectangle on the color wheel.



BCAB9A



A9B19C



9CB0C1



B1ABBF



# Sweetspot

The Sweet Spot groups the original color and five complimentary colors.



BCAB9A



F5EFE9



BC9AAB



7A7773



FAFAFA



7A7A7A



# Same Dimension

The Same Dimension uses a secret algorithm to generate beautiful new colors.



BCAB9A



F5DABF



BCBB9A



5E5A55



9E4F00



1F0F00



# Inverse Universe

The Inverse Universe completely reimagines the original color for something new.



9AABBC



BFDAF5



9A9BBC



555A5E



004F9E

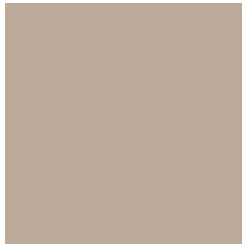


000F1F



# Previews

## White Background



This preview shows how the Hex color BCAB9A looks on a white background.

## Color Contrast Check

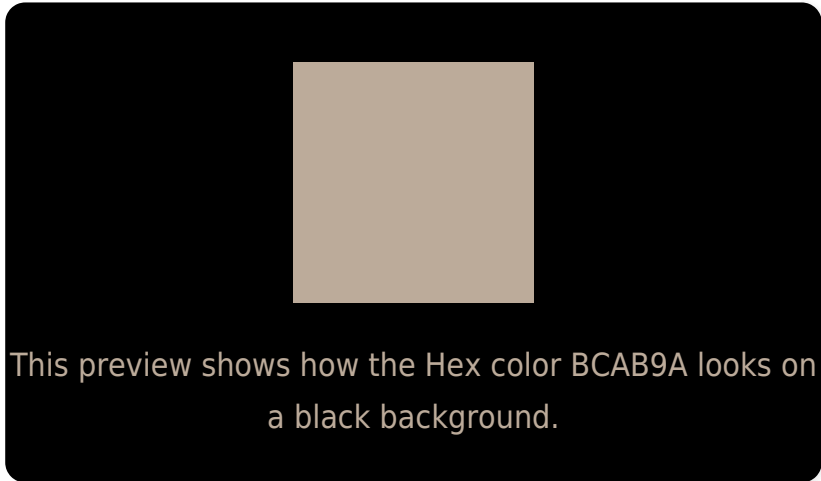
Large Text (above 18pt) WCAG AA × Fail

Any Text WCAG AA × Fail

Large Text (above 18pt) WCAG AAA × Fail

Any Text WCAG AAA × Fail

# Black Background



## Color Contrast Check

Large Text (above 18pt) WCAG AA ✓ Pass

Any Text WCAG AA ✓ Pass

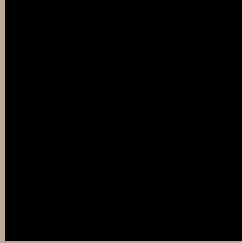
Large Text (above 18pt) WCAG AAA ✓ Pass

Any Text WCAG AAA ✓ Pass

If you want to check with other color combinations, try the [Color Contrast Checker](#).



## Hex BCAB9A Background



This preview shows how black text looks on a background with the Hex color BCAB9A.

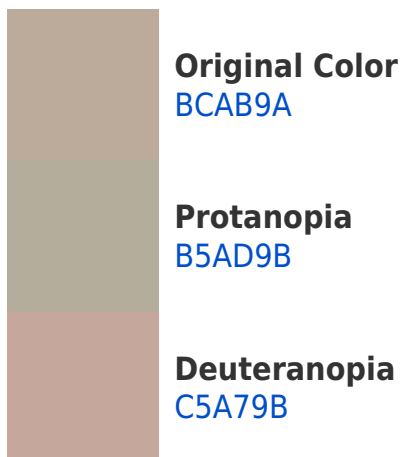


This preview shows how white text looks on a background with the Hex color BCAB9A.

# Color Blindness Simulation

Color vision deficiency is a very complex topic, and I could not describe the different causes any better than Wikipedia does, so if you want to learn more, you should check out their [article about color blindness](#).

## Dichromacy





**Tritanopia**  
BFA7B4

# Trichromacy



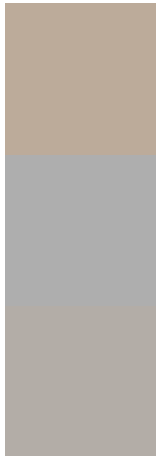
**Original Color**  
BCAB9A

**Protanomaly**  
B8AC9B

**Deuteranomaly**  
C2A89B

**Tritanomaly**  
BEA8AB

# Monochromacy



**Original Color**  
BCAB9A

**Achromatopsia**  
AEAEAE

**Achromatomaly**  
B3ADA7

# CSS Examples

## Text

The CSS property to change the color of the text to Hex BCAB9A is called "color". The color property can be set on classes, ids or directly on the HTML element.

This example shows how text in the color #BCAB9A looks like.

```
.text, #text, p{  
    color:#BCAB9A  
}
```

If you want to add a text shadow in that color use the text-shadow property, you can generate a text shadow directly with our [CSS Text Shadow Generator](#).

Here you see how black text with a 4 pixel #BCAB9A colored shadow looks like.

```
.shadow{ text-shadow: 4px 4px 2px #BCAB9A
}
```

## Border

The CSS property to change the border of an element to Hex BCAB9A is called "border". The border property can be set on classes, ids or directly on the HTML element.

This example shows the color as border, it can be applied via the CSS property "border" or "border-color".

```
.border, #border, table{ border:4px solid
#BCAB9A }
```

If only the border color should be changed use the property `border-color`.

```
.border{ border-color:#BCAB9A }
```

If you want to add a box shadow in that color use:

Here you see how a box with a 4 pixel #BCAB9A colored shadow looks like.

```
.boxshadow{ -moz-box-shadow:4px 4px 4px  
4px #BCAB9A; -webkit-box-shadow:4px 4px  
4px 4px #BCAB9A; box-shadow:4px 4px 4px  
4px #BCAB9A }
```

# Background

The CSS property to change the background color of an element to Hex BCAB9A is called "background". The background property can be set on classes, ids or directly on the HTML element.

```
.background, #background, body{  
background:#BCAB9A }
```

If only the background color should be changed can be used:

```
.background{ background-color:#BCAB9A }
```

This example shows the color as background, it is applied via the CSS property "background".

To optimize and compress your CSS code, you can use our [online CSS compressor and optimizer](#) based on csstidy. If you want to create a linear or radial gradient as background or border, check our [CSS Gradient Generator](#).



Hey! You found this booklet interesting? Support Converting Colors with the new Membership Option!

The pro membership hides all ads, plus gives you double the colors in the color bucket, and more awesome pro features!

**[Learn more, Memberships starting at \\$2.50/m!](#)**

**Follow me  
on Twitter!**

@ConvertingColor