

# Converting Colors

Hex(BD8553)

Have a look what the booklet for  
Hex(BD8553) contains.

<b>Hex(BD8553)</b> .....	3
<i><b>Conversions</b></i> .....	4
<i><b>Details</b></i> .....	6
<i><b>Harmonies</b></i> .....	11
<i><b>Previews</b></i> .....	23
<i><b>Color Blindness Simulation</b></i> .....	26
<i><b>CSS Examples</b></i> .....	29

**Color**

**Hex(BD8553)**

# Conversions

## Conversions Part 1

<b>Format</b>	<b>Color</b>
Hex	BD8553
RGB	189, 133, 83
RGB Percent	74%, 52%, 33%
CMY	0.2588, 0.4784, 0.6745
CMYK	0.00, 0.30, 0.56, 0.26
HSL	28°, 45%, 53%
HSV	28°, 56%, 74%
XYZ	30.9351, 28.2184, 11.9999
YIQ	144.0440, 49.4260, -3.6780

# Conversions

## Conversions Part 2

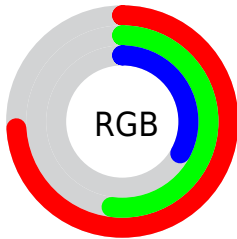
<b>Format</b>	<b>Color</b>
<b>R<sub>YB</sub></b>	189, 178, 83
Decimal	12420435
CIE <sub>Lab</sub>	60.09, 15.98, 35.29
CIE <sub>LCh</sub>	60, 38.742, 65.642
Yxy	28.2184, 0.4348, 0.3966
Android (android.graphics.Color)	4290610515 (0xFFBD8553)
YUV	144.0440, -30.0947, 39.4264
Hunter-Lab	53.1210, 10.9881, 23.7913

# Details

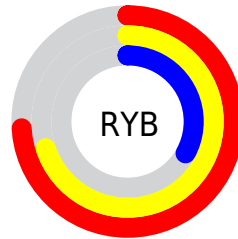
The Hex color **BD8553** is a dark color, and the websafe version is hex **CC9966**. A complement of this color would be **538BBD**, and the grayscale version is **909090**.

A 20% lighter version of the original color is **F8BA86**, and **845324** is the 20% darker color. If you saturate the color by 10%, you get **BD7B40**, and if you desaturate by 10%, it is **BD8F66**.

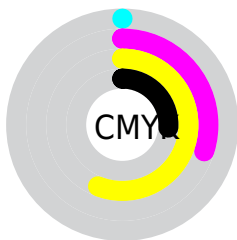
# Distribution



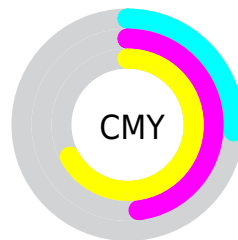
- Red (74%)
- Green (52%)
- Blue (33%)



- Red (74%)
- Yellow (70%)
- Blue (33%)



- Cyan (0%)
- Magenta (30%)
- Yellow (56%)
- Black (26%)



- Cyan (26%)
- Magenta (48%)
- Yellow (67%)

# Brightness & Saturation Gradients

These gradients show how the Hex color BD8553 changes by changing the brightness by 10 percent. The first figure shows a shift by +10% for each color and the second figure -10%.

Similar to the brightness gradients but the following saturation gradients show a change of the Hex color BD8553 by changing the saturation by 10% instead.



 BD8553

 BD8553

FFFFFF

 A06C3B

 F8BA86

 845324

 FFD6A0

 693C0C

 FFF2BB

 4F2600

 FFFFD7

 341100

 FFFFF4

 1E0001

 000000

 BD8553

 BD8553

 BD7B40

 BD8F66

 BD712D

 BD9979

 BD671A

 BDA38C

 BD5D07

 BDAD9F

 BD5900

 BDB7B2

 BDC1C4

 BDCBD7

 BDD5EA

 BDDFFD

# Harmonies

## Analogous

The Analogous color harmony consists of three colors that are next to each other on the color wheel.



CF7A6B



BD8553



A0914B

# Triad

The Triadic color harmony groups three colors that are evenly spaced from another and form a triangle on the color wheel.



BD8553



00A396



9D85C8

# Complementary

The Complementary color scheme is a pair of colors which are on the opposite of each other on the color wheel.



BD8553



538BBD

# Split Complementary

Split-complementary colors differ from the complementary color scheme. The scheme consists of three colors, the original color and two neighbors of the complement color.



6692D4



BD8553



00A1B7

# Square

The Square scheme is like the rectangle color scheme, but the four colors are evenly spaced on the color wheel.



BD8553



50A073



049CCE



C17AAE

# Rectangle

The Rectangle color scheme consists of four colors that form a rectangle on the color wheel.



BD8553



899852



049CCE



8D8ACE



# Sweetspot

The Sweet Spot groups the original color and five complimentary colors.



BD8553



F5DFCB



BD538C



7A6D62



FAFAFA



7A7A7A



# Same Dimension

The Same Dimension uses a secret algorithm to generate beautiful new colors.



BD8553



F59E51



BDB953



5E5955



9E4B00



1F0E00



# Inverse Universe

The Inverse Universe completely reimagines the original color for something new.



538BBD



51A7F5



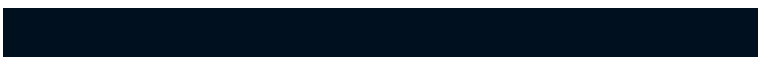
5357BD



555A5E



00549E

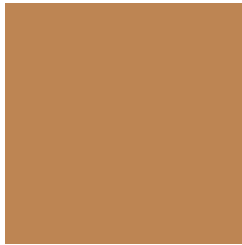


00101F



# Previews

## White Background



This preview shows how the Hex color BD8553 looks on a white background.

## Color Contrast Check

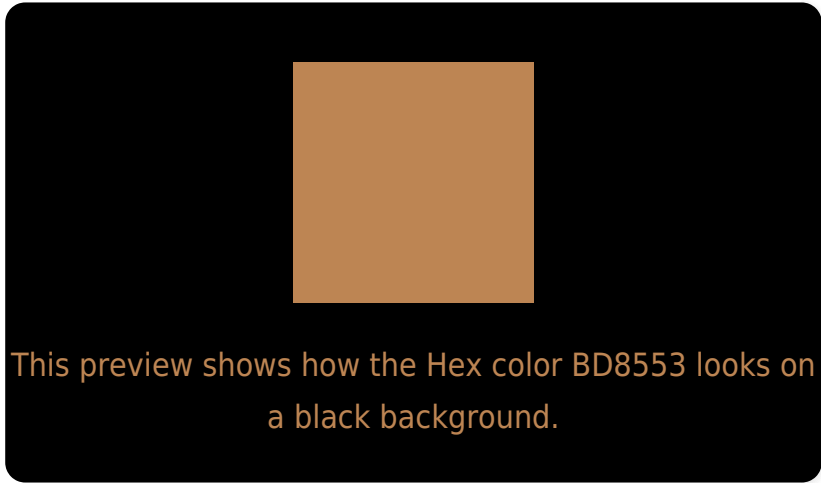
Large Text (above 18pt) WCAG AA ✓ Pass

Any Text WCAG AA × Fail

Large Text (above 18pt) WCAG AAA × Fail

Any Text WCAG AAA × Fail

# Black Background



## Color Contrast Check

Large Text (above 18pt) WCAG AA ✓ Pass

Any Text WCAG AA ✓ Pass

Large Text (above 18pt) WCAG AAA ✓ Pass

Any Text WCAG AAA × Fail

If you want to check with other color combinations, try the [Color Contrast Checker](#).



## Hex BD8553 Background



This preview shows how black text looks on a background with the Hex color BD8553.



This preview shows how white text looks on a background with the Hex color BD8553.

# Color Blindness Simulation

Color vision deficiency is a very complex topic, and I could not describe the different causes any better than Wikipedia does, so if you want to learn more, you should check out their [article about color blindness](#).

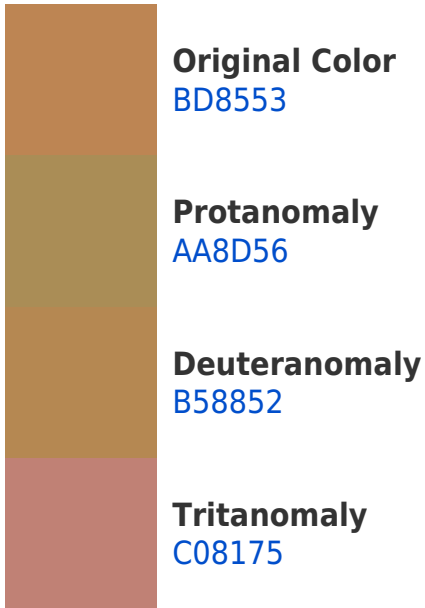
## Dichromacy





**Tritanopia**  
C17F88

# Trichromacy



# Monochromacy



# CSS Examples

## Text

The CSS property to change the color of the text to Hex BD8553 is called "color". The color property can be set on classes, ids or directly on the HTML element.

This example shows how text in the color #BD8553 looks like.

```
.text, #text, p{  
    color:#BD8553  
}
```

If you want to add a text shadow in that color use the text-shadow property, you can generate a text shadow directly with our [CSS Text Shadow Generator](#).

Here you see how black text with a 4 pixel #BD8553 colored shadow looks like.

```
.shadow{ text-shadow: 4px 4px 2px #BD8553  
}
```

## Border

The CSS property to change the border of an element to Hex BD8553 is called "border". The border property can be set on classes, ids or directly on the HTML element.

This example shows the color as border, it can be applied via the CSS property "border" or "border-color".

```
.border, #border, table{ border:4px solid  
#BD8553 }
```

If only the border color should be changed use the property `border-color`.

```
.border{ border-color:#BD8553 }
```

If you want to add a box shadow in that color use:

Here you see how a box with a 4 pixel #BD8553 colored shadow looks like.

```
.boxshadow{ -moz-box-shadow:4px 4px 4px  
4px #BD8553; -webkit-box-shadow:4px 4px  
4px 4px #BD8553; box-shadow:4px 4px 4px  
4px #BD8553 }
```

# Background

The CSS property to change the background color of an element to Hex BD8553 is called "background". The background property can be set on classes, ids or directly on the HTML element.

```
.background, #background, body{  
background:#BD8553 }
```

If only the background color should be changed can be used:

```
.background{ background-color:#BD8553 }
```

This example shows the color as background, it is applied via the CSS property "background".

To optimize and compress your CSS code, you can use our [online CSS compressor and optimizer](#) based on csstidy. If you want to create a linear or radial gradient as background or border, check our [CSS Gradient Generator](#).



Hey! You found this booklet interesting? Support Converting Colors with the new Membership Option!

The pro membership hides all ads, plus gives you double the colors in the color bucket, and more awesome pro features!

**[Learn more, Memberships starting at \\$2.50/m!](#)**

**Follow me  
on Twitter!**

@ConvertingColor