

# Converting Colors

Hex(BD8E83)

Have a look what the booklet for  
Hex(BD8E83) contains.

<b>Hex(BD8E83)</b> .....	3
<i><b>Conversions</b></i> .....	4
<i><b>Details</b></i> .....	6
<i><b>Harmonies</b></i> .....	11
<i><b>Previews</b></i> .....	23
<i><b>Color Blindness Simulation</b></i> .....	26
<i><b>CSS Examples</b></i> .....	29

# **Color**

**Hex(BD8E83)**

# Conversions

## Conversions Part 1

Format	Color
Hex	BD8E83
RGB	189, 142, 131
RGB Percent	74%, 56%, 51%
CMY	0.2588, 0.4431, 0.4863
CMYK	0.00, 0.25, 0.31, 0.26
HSL	11°, 31%, 63%
HSV	11°, 31%, 74%
XYZ	34.7560, 31.8035, 25.7796
YIQ	154.7990, 31.5430, 6.5430

# Conversions

## Conversions Part 2

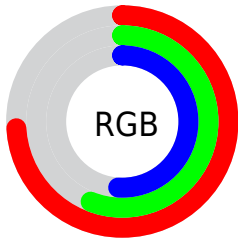
Format	Color
<a href="#">RYB</a>	<a href="#">189, 145, 131</a>
Decimal	<a href="#">12422787</a>
CIELab	<a href="#">63.18, 16.25, 12.79</a>
CIElCh	<a href="#">63, 20.682, 38.198</a>
Yxy	<a href="#">31.8035, 0.3764, 0.3444</a>
Android (android.graphics.Color)	<a href="#">4290612867</a> ( <a href="#">0xFFBD8E83</a> )
YUV	<a href="#">154.7990, -11.7329, 29.9943</a>
Hunter-Lab	<a href="#">56.3946, 11.3190, 12.3731</a>

# Details

The Hex color **BD8E83** is a light color, and the websafe version is hex **CC9999**. A complement of this color would be **83B2BD**, and the grayscale version is **9B9B9B**.

A 20% lighter version of the original color is **F6C4B8**, and **865C52** is the 20% darker color. If you saturate the color by 10%, you get **BD7F70**, and if you desaturate by 10%, it is **BD9D96**.

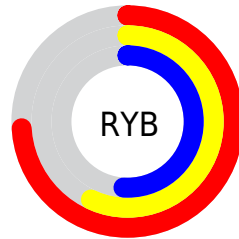
# Distribution



Red (74%)

Green (56%)

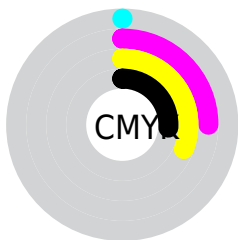
Blue (51%)



Red (74%)

Yellow (57%)

Blue (51%)

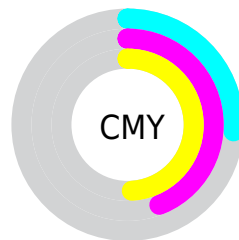


Cyan (0%)

Magenta (25%)

Yellow (31%)

Black (26%)



Cyan (26%)

Magenta (44%)

Yellow (49%)

# Brightness & Saturation Gradients

These gradients show how the Hex color BD8E83 changes by changing the brightness by 10 percent. The first figure shows a shift by +10% for each color and the second figure -10%.

Similar to the brightness gradients but the following saturation gradients show a change of the Hex color BD8E83 by changing the saturation by 10% instead.



 BD8E83

 BD8E83

FFFFFF

 A1746A

 F6C4B8

 865C52

 FFE0D4

 6C443B

 FFFDF0

 532D25

 3A1810

 250000

 000000

 BD8E83

 BD8E83

 BD7F70

 BD9D96

 BD6F5D

 BDADA9

 BD604A

 BDBCBC

 BD5137

 BDCBCF

 BD4124

 BDDBE2

 BD3212

 BDEAF4

 BD2400

 BDF9FF

 BDFFFF

# Harmonies

## Analogous

The Analogous color harmony consists of three colors that are next to each other on the color wheel.



BE8C94



BD8E83



B39377

# Triad

The Triadic color harmony groups three colors that are evenly spaced from another and form a triangle on the color wheel.



BD8E83



78A28B



8A99BD

# Complementary

The Complementary color scheme is a pair of colors which are on the opposite of each other on the color wheel.



BD8E83



83B2BD

# Split Complementary

Split-complementary colors differ from the complementary color scheme. The scheme consists of three colors, the original color and two neighbors of the complement color.



729FBB



BD8E83



69A39D

# Square

The Square scheme is like the rectangle color scheme, but the four colors are evenly spaced on the color wheel.



BD8E83



8D9F7C



65A2AF



A293B6

# Rectangle

The Rectangle color scheme consists of four colors that form a rectangle on the color wheel.



BD8E83



A89774



65A2AF



829BBD

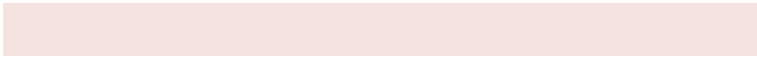


# Sweetspot

The Sweet Spot groups the original color and five complimentary colors.



BD8E83



F5E3DF



BD83B2



7A6F6D



FAFAFA



7A7A7A



# Same Dimension

The Same Dimension uses a secret algorithm to generate beautiful new colors.



BD8E83



F5AB9A



BDAB83



5E5755



9E1E00



1F0600



# Inverse Universe

The Inverse Universe completely reimagines the original color for something new.



83B2BD



9AE4F5



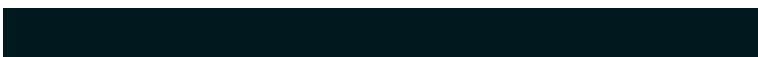
8395BD



555D5E



00809E

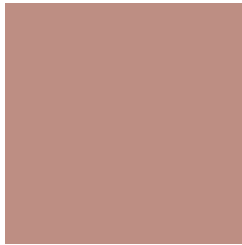


00191F



# Previews

## White Background



This preview shows how the Hex color BD8E83 looks on a white background.

## Color Contrast Check

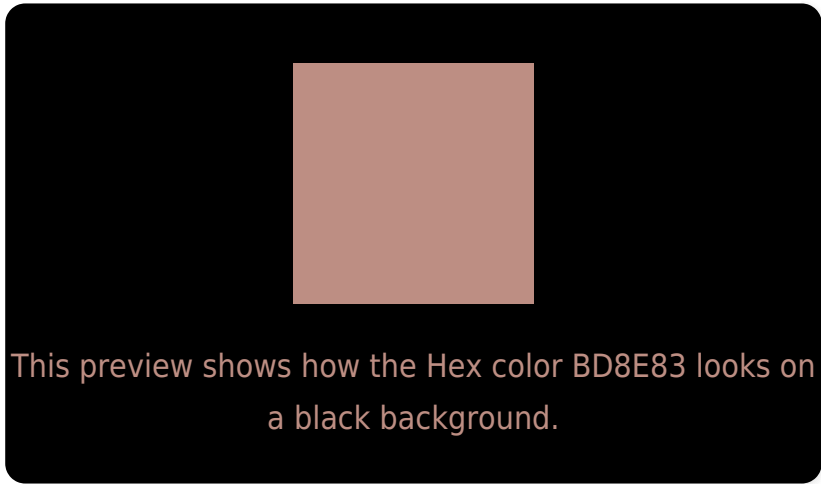
Large Text (above 18pt) WCAG AA × Fail

Any Text WCAG AA × Fail

Large Text (above 18pt) WCAG AAA × Fail

Any Text WCAG AAA × Fail

# Black Background



## Color Contrast Check

Large Text (above 18pt) WCAG AA ✓ Pass

Any Text WCAG AA ✓ Pass

Large Text (above 18pt) WCAG AAA ✓ Pass

Any Text WCAG AAA ✓ Pass

If you want to check with other color combinations, try the [Color Contrast Checker](#).



## Hex BD8E83 Background



This preview shows how black text looks on a background with the Hex color BD8E83.

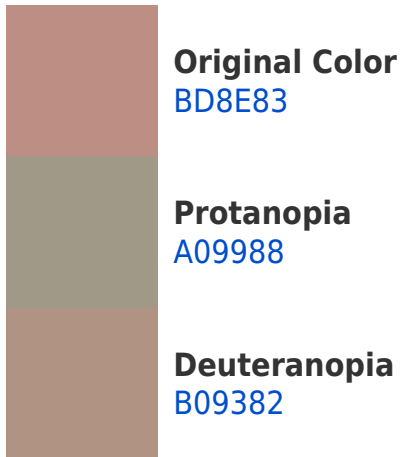


This preview shows how white text looks on a background with the Hex color BD8E83.

# Color Blindness Simulation

Color vision deficiency is a very complex topic, and I could not describe the different causes any better than Wikipedia does, so if you want to learn more, you should check out their [article about color blindness](#).

## Dichromacy





**Tritanopia**  
BF8B96

# Trichromacy



**Original Color**  
BD8E83

**Protanomaly**  
AB9586

**Deuteranomaly**  
B59182

**Tritanomaly**  
BE8C8F

# Monochromacy



**Original Color**  
BD8E83

**Achromatopsia**  
9B9B9B

**Achromatomaly**  
A79692

# CSS Examples

## Text

The CSS property to change the color of the text to Hex BD8E83 is called "color". The color property can be set on classes, ids or directly on the HTML element.

This example shows how text in the color #BD8E83 looks like.

```
.text, #text, p{  
    color:#BD8E83  
}
```

If you want to add a text shadow in that color use the text-shadow property, you can generate a text shadow directly with our [CSS Text Shadow Generator](#).

Here you see how black text with a 4 pixel #BD8E83 colored shadow looks like.

```
.shadow{ text-shadow: 4px 4px 2px #BD8E83
}
```

## Border

The CSS property to change the border of an element to Hex BD8E83 is called "border". The border property can be set on classes, ids or directly on the HTML element.

This example shows the color as border, it can be applied via the CSS property "border" or "border-color".

```
.border, #border, table{ border:4px solid
#BD8E83 }
```

If only the border color should be changed use the property `border-color`.

```
.border{ border-color:#BD8E83 }
```

If you want to add a box shadow in that color use:

Here you see how a box with a 4 pixel #BD8E83 colored shadow looks like.

```
.boxshadow{ -moz-box-shadow:4px 4px 4px  
4px #BD8E83; -webkit-box-shadow:4px 4px  
4px 4px #BD8E83; box-shadow:4px 4px 4px  
4px #BD8E83 }
```

# Background

The CSS property to change the background color of an element to Hex BD8E83 is called "background". The background property can be set on classes, ids or directly on the HTML element.

```
.background, #background, body{  
background:#BD8E83 }
```

If only the background color should be changed can be used:

```
.background{ background-color:#BD8E83 }
```

This example shows the color as background, it is applied via the CSS property "background".

To optimize and compress your CSS code, you can use our [online CSS compressor and optimizer](#) based on csstidy. If you want to create a linear or radial gradient as background or border, check our [CSS Gradient Generator](#).



Hey! You found this booklet interesting? Support Converting Colors with the new Membership Option!

The pro membership hides all ads, plus gives you double the colors in the color bucket, and more awesome pro features!

**[Learn more, Memberships starting at \\$2.50/m!](#)**

**Follow me  
on Twitter!**

@ConvertingColor