

Converting Colors

Hex(BD8F86)

Have a look what the booklet for
Hex(BD8F86) contains.

Hex(BD8F86)	3
<i>Conversions</i>	4
<i>Details</i>	6
<i>Harmonies</i>	11
<i>Previews</i>	23
<i>Color Blindness Simulation</i>	26
<i>CSS Examples</i>	29

Color

Hex(BD8F86)

Conversions

Conversions Part 1

Format	Color
Hex	BD8F86
RGB	189, 143, 134
RGB Percent	74%, 56%, 53%
CMY	0.2588, 0.4392, 0.4745
CMYK	0.00, 0.24, 0.29, 0.26
HSL	10°, 29%, 63%
HSV	10°, 29%, 74%
XYZ	35.1118, 32.1850, 26.9160
YIQ	155.7280, 30.3050, 6.9530

Conversions

Conversions Part 2

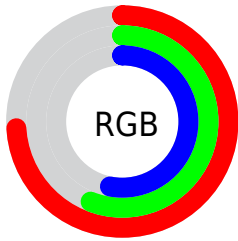
Format	Color
R _Y B	189, 145, 134
Decimal	12423046
CIE Lab	63.50, 16.11, 11.54
CIE LCh	63, 19.818, 35.616
Yxy	32.1850, 0.3727, 0.3416
Android (android.graphics.Color)	4290613126 (0xFFBD8F86)
YUV	155.7280, -10.7119, 29.1795
Hunter-Lab	56.7318, 11.1946, 11.5826

Details

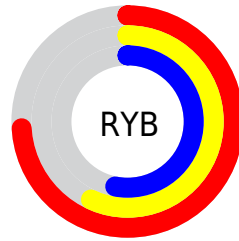
The Hex color **BD8F86** is a light color, and the websafe version is hex **CC9999**. A complement of this color would be **86B4BD**, and the grayscale version is **9C9C9C**.

A 20% lighter version of the original color is **F6C5BB**, and **865C54** is the 20% darker color. If you saturate the color by 10%, you get **BD7F73**, and if you desaturate by 10%, it is **BD9F99**.

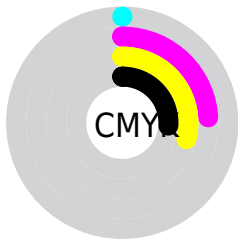
Distribution



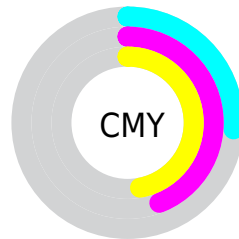
- Red (74%)
- Green (56%)
- Blue (53%)



- Red (74%)
- Yellow (57%)
- Blue (53%)



- Cyan (0%)
- Magenta (24%)
- Yellow (29%)
- Black (26%)



- Cyan (26%)
- Magenta (44%)
- Yellow (47%)

Brightness & Saturation Gradients

These gradients show how the Hex color BD8F86 changes by changing the brightness by 10 percent. The first figure shows a shift by +10% for each color and the second figure -10%.

Similar to the brightness gradients but the following saturation gradients show a change of the Hex color BD8F86 by changing the saturation by 10% instead.

 BD8F86

 BD8F86

FFFFFF

 A1756D

 F6C5BB

 865C54

 FFE1D7

 6C453D

 FFFE F3

 532E27

 3B1913

 250000

 000000

 BD8F86

 BD8F86

 BD7F73

 BD9F99

 BD6F60

 BDAFAC

 BD604D

 BDBEBF

 BD503A

 BDCED2

 BD4027

 BDDEE5

 BD3015

 BDEEF7

 BD2002

 BDFEFF

 BD1F00

 BDFFFF

Harmonies

Analogous

The Analogous color harmony consists of three colors that are next to each other on the color wheel.



BD8D97



BD8F86



B4947A

Triad

The Triadic color harmony groups three colors that are evenly spaced from another and form a triangle on the color wheel.



BD8F86



7CA38B



899ABD

Complementary

The Complementary color scheme is a pair of colors which are on the opposite of each other on the color wheel.



BD8F86



86B4BD

Split Complementary

Split-complementary colors differ from the complementary color scheme. The scheme consists of three colors, the original color and two neighbors of the complement color.



74A0B9



BD8F86



6DA49D

Square

The Square scheme is like the rectangle color scheme, but the four colors are evenly spaced on the color wheel.



BD8F86



909F7D



69A3AE



A194B6

Rectangle

The Rectangle color scheme consists of four colors that form a rectangle on the color wheel.



BD8F86



AA9877



69A3AE



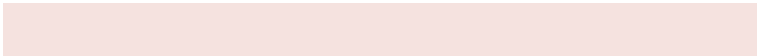
829CBD

Sweetspot

The Sweet Spot groups the original color and five complimentary colors.



BD8F86



F5E2DF



BD86B5



7A6F6D



FAFAFA



7A7A7A

Same Dimension

The Same Dimension uses a secret algorithm to generate beautiful new colors.



BD8F86



F5AD9F



BDAA86



5E5655



9E1A00



1F0500

Inverse Universe

The Inverse Universe completely reimagines the original color for something new.



86B4BD



9FE7F5



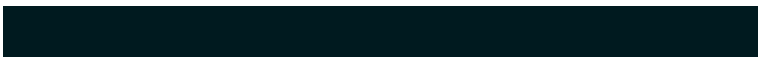
8699BD



555D5E



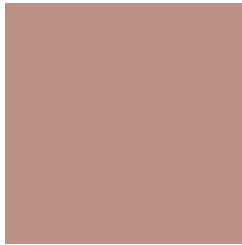
00849E



001A1F

Previews

White Background



This preview shows how the Hex color BD8F86 looks on a white background.

Color Contrast Check

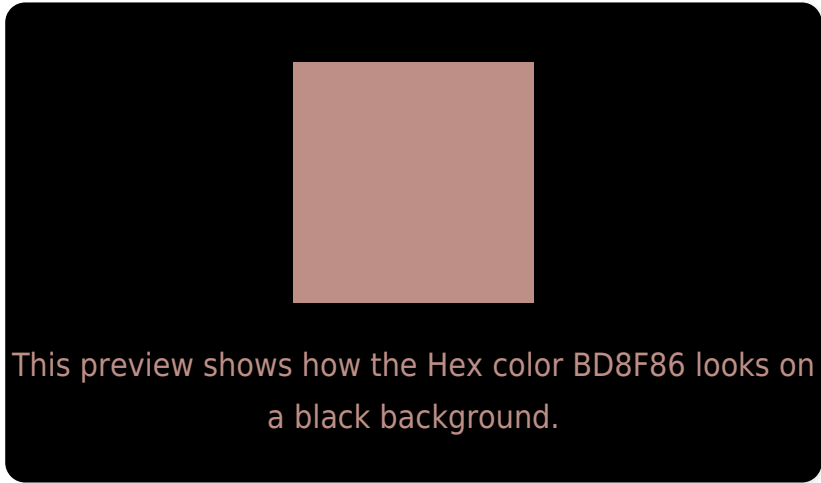
Large Text (above 18pt) WCAG AA × Fail

Any Text WCAG AA × Fail

Large Text (above 18pt) WCAG AAA × Fail

Any Text WCAG AAA × Fail

Black Background



Color Contrast Check

Large Text (above 18pt) WCAG AA ✓ Pass

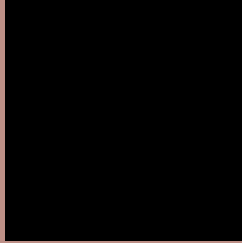
Any Text WCAG AA ✓ Pass

Large Text (above 18pt) WCAG AAA ✓ Pass

Any Text WCAG AAA ✓ Pass

If you want to check with other color combinations, try the [Color Contrast Checker](#).

Hex BD8F86 Background



This preview shows how black text looks on a background with the Hex color BD8F86.



This preview shows how white text looks on a background with the Hex color BD8F86.

Color Blindness Simulation

Color vision deficiency is a very complex topic, and I could not describe the different causes any better than Wikipedia does, so if you want to learn more, you should check out their [article about color blindness](#).

Dichromacy





Tritanopia
BF8C97

Trichromacy



Original Color
BD8F86

Protanomaly
AB9689

Deuteranomaly
B59285

Tritanomaly
BE8D91

Monochromacy



Original Color
BD8F86

Achromatopsia
9C9C9C

Achromatomaly
A89794

CSS Examples

Text

The CSS property to change the color of the text to Hex BD8F86 is called "color". The color property can be set on classes, ids or directly on the HTML element.

This example shows how text in the color #BD8F86 looks like.

```
.text, #text, p{  
    color:#BD8F86  
}
```

If you want to add a text shadow in that color use the text-shadow property, you can generate a text shadow directly with our [CSS Text Shadow Generator](#).

Here you see how black text with a 4 pixel #BD8F86 colored shadow looks like.

```
.shadow{ text-shadow: 4px 4px 2px #BD8F86
}
```

Border

The CSS property to change the border of an element to Hex BD8F86 is called "border". The border property can be set on classes, ids or directly on the HTML element.

This example shows the color as border, it can be applied via the CSS property "border" or "border-color".

```
.border, #border, table{ border:4px solid
#BD8F86 }
```

If only the border color should be changed use the property `border-color`.

```
.border{ border-color:#BD8F86 }
```

If you want to add a box shadow in that color use:

Here you see how a box with a 4 pixel #BD8F86 colored shadow looks like.

```
.boxshadow{ -moz-box-shadow:4px 4px 4px  
4px #BD8F86; -webkit-box-shadow:4px 4px  
4px 4px #BD8F86; box-shadow:4px 4px 4px  
4px #BD8F86 }
```

Background

The CSS property to change the background color of an element to Hex BD8F86 is called "background". The background property can be set on classes, ids or directly on the HTML element.

```
.background, #background, body{  
background:#BD8F86 }
```

If only the background color should be changed can be used:

```
.background{ background-color:#BD8F86 }
```

This example shows the color as background, it is applied via the CSS property "background".

To optimize and compress your CSS code, you can use our [online CSS compressor and optimizer](#) based on csstidy. If you want to create a linear or radial gradient as background or border, check our [CSS Gradient Generator](#).

Hey! You found this booklet interesting? Support Converting Colors with the new Membership Option!

The pro membership hides all ads, plus gives you double the colors in the color bucket, and more awesome pro features!

[Learn more, Memberships starting at \\$2.50/m!](#)

**Follow me
on Twitter!**

@ConvertingColor