

# Converting Colors

Hex(BD9295)

Have a look what the booklet for  
Hex(BD9295) contains.

<b>Hex(BD9295)</b> .....	3
<i><b>Conversions</b></i> .....	4
<i><b>Details</b></i> .....	6
<i><b>Harmonies</b></i> .....	11
<i><b>Previews</b></i> .....	23
<i><b>Color Blindness Simulation</b></i> .....	26
<i><b>CSS Examples</b></i> .....	29

**Color**

**Hex(BD9295)**

# Conversions

## Conversions Part 1

Format	Color
Hex	BD9295
RGB	189, 146, 149
RGB Percent	74%, 57%, 58%
CMY	0.2588, 0.4275, 0.4157
CMYK	0.00, 0.23, 0.21, 0.26
HSL	356°, 25%, 66%
HSV	356°, 23%, 74%
XYZ	36.6900, 33.5465, 32.9751
YIQ	159.1990, 24.6650, 10.0490

# Conversions

## Conversions Part 2

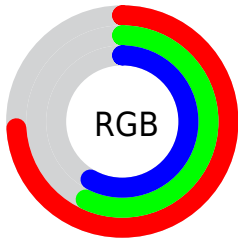
Format	Color
R <sub>Y</sub> B	189, 146, 149
Decimal	12423829
CIE Lab	64.60, 16.64, 4.66
CIE LCh	65, 17.282, 15.637
Yxy	33.5465, 0.3555, 0.3250
Android (android.graphics.Color)	4290613909 (0xFFBD9295)
YUV	159.1990, -5.0281, 26.1355
Hunter-Lab	57.9194, 11.7149, 6.7881

# Details

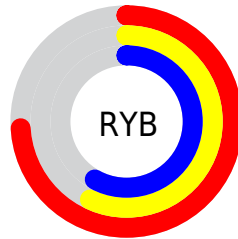
The Hex color **BD9295** is a light color, and the websafe version is hex **CC9999**. A complement of this color would be **92BDBA**, and the grayscale version is **9F9F9F**.

A 20% lighter version of the original color is **F6C8CB**, and **875F62** is the 20% darker color. If you saturate the color by 10%, you get **BD7F83**, and if you desaturate by 10%, it is **BDA5A7**.

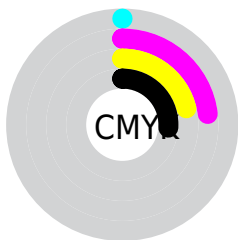
# Distribution



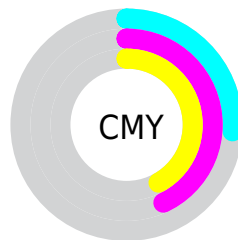
- Red (74%)
- Green (57%)
- Blue (58%)



- Red (74%)
- Yellow (57%)
- Blue (58%)



- Cyan (0%)
- Magenta (23%)
- Yellow (21%)
- Black (26%)



- Cyan (26%)
- Magenta (43%)
- Yellow (42%)

# Brightness & Saturation Gradients

These gradients show how the Hex color BD9295 changes by changing the brightness by 10 percent. The first figure shows a shift by +10% for each color and the second figure -10%.

Similar to the brightness gradients but the following saturation gradients show a change of the Hex color BD9295 by changing the saturation by 10% instead.



 BD9295

 BD9295

FFFFFF

 A2787B

 F6C8CB

 875F62

 FFE4E7

 6D474B

 543134

 3C1B1F

 270306

 000000

 BD9295

 BD9295

 BD7F83

 BDA5A7

 BD6C72

 BDB8B8

 BD5960

 BDCBCA

 BD464F

 BDDEDB

 BD333D

 BDF1ED

 BD212C

 BDFFFE

 BD0E1A

 BDFFFF

 BD000D

# Harmonies

## Analogous

The Analogous color harmony consists of three colors that are next to each other on the color wheel.



B793A5



BD9295



BA9587

# Triad

The Triadic color harmony groups three colors that are evenly spaced from another and form a triangle on the color wheel.



BD9295



8FA287



82A0BA

# Complementary

The Complementary color scheme is a pair of colors which are on the opposite of each other on the color wheel.



BD9295



92BDBA

# Split Complementary

Split-complementary colors differ from the complementary color scheme. The scheme consists of three colors, the original color and two neighbors of the complement color.



75A4B2



BD9295



7EA594

# Square

The Square scheme is like the rectangle color scheme, but the four colors are evenly spaced on the color wheel.



BD9295



A09E7F



74A6A4



969BBA

# Rectangle

The Rectangle color scheme consists of four colors that form a rectangle on the color wheel.



BD9295



B49781



74A6A4



7DA2B8

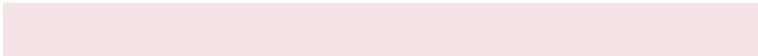


# Sweetspot

The Sweet Spot groups the original color and five complimentary colors.



BD9295



F5E4E5



B992BD



7A7171



FAFAFA



7A7A7A



# Same Dimension

The Same Dimension uses a secret algorithm to generate beautiful new colors.



BD9295



F5B3B7



BDA492



5E5556



9E000B



1F0002



# Inverse Universe

The Inverse Universe completely reimagines the original color for something new.



BD9295



F5B3B7



92ABBD



5E5556



9E000B

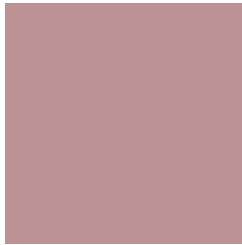


1F0002



# Previews

## White Background



This preview shows how the Hex color BD9295 looks on a white background.

## Color Contrast Check

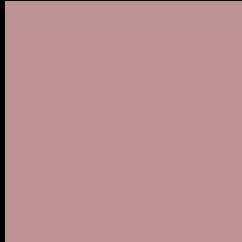
Large Text (above 18pt) WCAG AA × Fail

Any Text WCAG AA × Fail

Large Text (above 18pt) WCAG AAA × Fail

Any Text WCAG AAA × Fail

# Black Background



This preview shows how the Hex color BD9295 looks on a black background.

## Color Contrast Check

Large Text (above 18pt) WCAG AA ✓ Pass

Any Text WCAG AA ✓ Pass

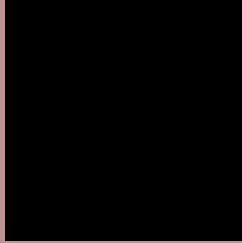
Large Text (above 18pt) WCAG AAA ✓ Pass

Any Text WCAG AAA ✓ Pass

If you want to check with other color combinations, try the [Color Contrast Checker](#).



## Hex BD9295 Background



This preview shows how black text looks on a background with the Hex color BD9295.



This preview shows how white text looks on a background with the Hex color BD9295.

# Color Blindness Simulation

Color vision deficiency is a very complex topic, and I could not describe the different causes any better than Wikipedia does, so if you want to learn more, you should check out their [article about color blindness](#).


## Dichromacy



**Original Color**  
BD9295

**Protanopia**  
A09C9B

**Deuteranopia**  
AF9894



**Tritanopia**  
BE919C

# Trichromacy



**Original Color**  
BD9295

**Protanomaly**  
AB9899

**Deuteranomaly**  
B49694

**Tritanomaly**  
BE9199

# Monochromacy



**Original Color**  
BD9295

**Achromatopsia**  
9F9F9F

**Achromatomaly**  
AA9A9B

# CSS Examples

## Text

The CSS property to change the color of the text to Hex BD9295 is called "color". The color property can be set on classes, ids or directly on the HTML element.

This example shows how text in the color #BD9295 looks like.

```
.text, #text, p{  
  color:#BD9295  
}
```

If you want to add a text shadow in that color use the text-shadow property, you can generate a text shadow directly with our [CSS Text Shadow Generator](#).

Here you see how black text with a 4 pixel #BD9295 colored shadow looks like.

```
.shadow{ text-shadow: 4px 4px 2px #BD9295
}
```

## Border

The CSS property to change the border of an element to Hex BD9295 is called "border". The border property can be set on classes, ids or directly on the HTML element.

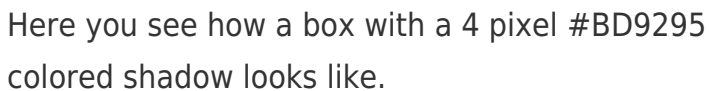
This example shows the color as border, it can be applied via the CSS property "border" or "border-color".

```
.border, #border, table{ border:4px solid
#BD9295 }
```

If only the border color should be changed use the property border-color.

```
.border{ border-color:#BD9295 }
```

If you want to add a box shadow in that color use:



Here you see how a box with a 4 pixel #BD9295 colored shadow looks like.

```
.boxshadow{ -moz-box-shadow:4px 4px 4px  
4px #BD9295; -webkit-box-shadow:4px 4px  
4px 4px #BD9295; box-shadow:4px 4px 4px  
4px #BD9295 }
```

# Background

The CSS property to change the background color of an element to Hex BD9295 is called "background". The background property can be set on classes, ids or directly on the HTML element.

```
.background, #background, body{  
background:#BD9295 }
```

If only the background color should be changed can be used:

```
.background{ background-color:#BD9295 }
```

This example shows the color as background, it is applied via the CSS property "background".

To optimize and compress your CSS code, you can use our [online CSS compressor and optimizer](#) based on csstidy. If you want to create a linear or radial gradient as background or border, check our [CSS Gradient Generator](#).



Hey! You found this booklet interesting? Support Converting Colors with the new Membership Option!

The pro membership hides all ads, plus gives you double the colors in the color bucket, and more awesome pro features!

**[Learn more, Memberships starting at \\$2.50/m!](#)**

**Follow me  
on Twitter!**

@ConvertingColor