

Converting Colors

Hex(BD966E)

Have a look what the booklet for
Hex(BD966E) contains.

Hex(BD966E)	3
<i>Conversions</i>	4
<i>Details</i>	6
<i>Harmonies</i>	11
<i>Previews</i>	23
<i>Color Blindness Simulation</i>	26
<i>CSS Examples</i>	29

Color

Hex(BD966E)

Conversions

Conversions Part 1

Format	Color
Hex	BD966E
RGB	189, 150, 110
RGB Percent	74%, 59%, 43%
CMY	0.2588, 0.4118, 0.5686
CMYK	0.00, 0.21, 0.42, 0.26
HSL	30°, 37%, 59%
HSV	30°, 42%, 74%
XYZ	34.7071, 33.7573, 19.4384
YIQ	157.1010, 36.0840, -4.1720

Conversions

Conversions Part 2

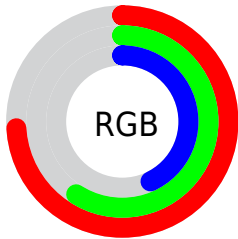
Format	Color
RYB	187, 189, 110
Decimal	12424814
CIELab	64.77, 9.24, 26.64
CIELCh	65, 28.198, 70.881
Yxy	33.7573, 0.3948, 0.3840
Android (android.graphics.Color)	4290614894 (0xFFBD966E)
YUV	157.1010, -23.2208, 27.9754
Hunter-Lab	58.1010, 4.9515, 20.8345

Details

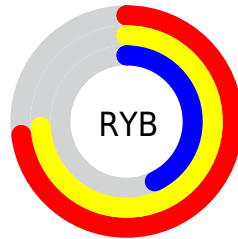
The Hex color **BD966E** is a dark color, and the websafe version is hex **CC9966**. A complement of this color would be **6E95BD**, and the grayscale version is **9D9D9D**.

A 20% lighter version of the original color is **F7CCA2**, and **86633E** is the 20% darker color. If you saturate the color by 10%, you get **BD8D5B**, and if you desaturate by 10%, it is **BD9F81**.

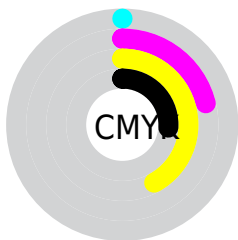
Distribution



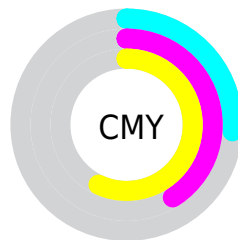
- Red (74%)
- Green (59%)
- Blue (43%)



- Red (73%)
- Yellow (74%)
- Blue (43%)



- Cyan (0%)
- Magenta (21%)
- Yellow (42%)
- Black (26%)



- Cyan (26%)
- Magenta (41%)
- Yellow (57%)

Brightness & Saturation Gradients

These gradients show how the Hex color BD966E changes by changing the brightness by 10 percent. The first figure shows a shift by +10% for each color and the second figure -10%.

Similar to the brightness gradients but the following saturation gradients show a change of the Hex color BD966E by changing the saturation by 10% instead.

 BD966E

 BD966E

FFFFFF

 A17C55

 F7CCA2

 86633E

 FFE8BD

 6B4B27

 FFFFD9

 523511

 FFFFF6

 3A1F00

 210900

 000000

 BD966E

 BD966E

 BD8D5B

 BD9F81

 BD8348

 BDA994

 BD7A35

 BDB2A7

 BD7122

 BDBBBA

 BD670F

 BDC5CD

 BD6000

 BDCEDF

 BDD7F2

 BDE1FF

 BDEAFF

Harmonies

Analogous

The Analogous color harmony consists of three colors that are next to each other on the color wheel.



CC8E7D



BD966E



A69E6B

Triad

The Triadic color harmony groups three colors that are evenly spaced from another and form a triangle on the color wheel.



BD966E



53ABA6



AC93C3

Complementary

The Complementary color scheme is a pair of colors which are on the opposite of each other on the color wheel.



BD966E



6E95BD

Split Complementary

Split-complementary colors differ from the complementary color scheme. The scheme consists of three colors, the original color and two neighbors of the complement color.



8A9CCE



BD966E



4DA9BD

Square

The Square scheme is like the rectangle color scheme, but the four colors are evenly spaced on the color wheel.



BD966E



6CAA8C



65A4CC



C58CAE

Rectangle

The Rectangle color scheme consists of four colors that form a rectangle on the color wheel.



BD966E



93A371



65A4CC



A296C8

Sweetspot

The Sweet Spot groups the original color and five complimentary colors.



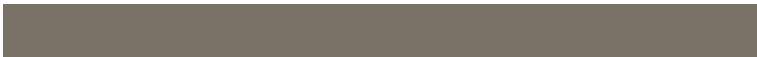
BD966E



F5E5D5



BD6E96



7A7167



FAFAFA



7A7A7A

Same Dimension

The Same Dimension uses a secret algorithm to generate beautiful new colors.



BD966E



F5B87A



BDBD6E



5E5A55



9E5000



1F0F00

Inverse Universe

The Inverse Universe completely reimagines the original color for something new.



6E95BD



7AB7F5



6E6EBD



555A5E



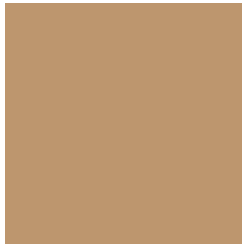
004E9E



000F1F

Previews

White Background



This preview shows how the Hex color BD966E looks on a white background.

Color Contrast Check

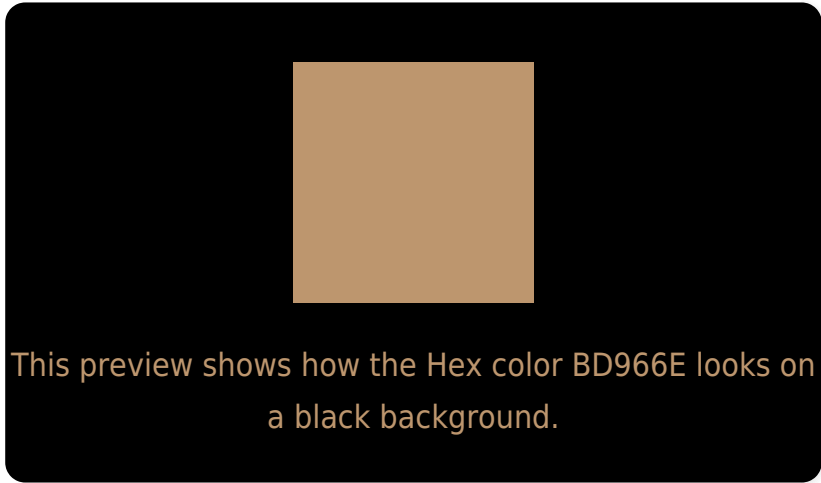
Large Text (above 18pt) WCAG AA × Fail

Any Text WCAG AA × Fail

Large Text (above 18pt) WCAG AAA × Fail

Any Text WCAG AAA × Fail

Black Background



Color Contrast Check

Large Text (above 18pt) WCAG AA ✓ Pass

Any Text WCAG AA ✓ Pass

Large Text (above 18pt) WCAG AAA ✓ Pass

Any Text WCAG AAA ✓ Pass

If you want to check with other color combinations, try the [Color Contrast Checker](#).

Hex BD966E Background



This preview shows how black text looks on a background with the Hex color BD966E.



This preview shows how white text looks on a background with the Hex color BD966E.

Color Blindness Simulation

Color vision deficiency is a very complex topic, and I could not describe the different causes any better than Wikipedia does, so if you want to learn more, you should check out their [article about color blindness](#).

Dichromacy





Tritanopia
C1909B

Trichromacy



Monochromacy



CSS Examples

Text

The CSS property to change the color of the text to Hex BD966E is called "color". The color property can be set on classes, ids or directly on the HTML element.

This example shows how text in the color #BD966E looks like.

```
.text, #text, p{  
    color:#BD966E  
}
```

If you want to add a text shadow in that color use the text-shadow property, you can generate a text shadow directly with our [CSS Text Shadow Generator](#).

Here you see how black text with a 4 pixel #BD966E colored shadow looks like.

```
.shadow{ text-shadow: 4px 4px 2px #BD966E
}
```

Border

The CSS property to change the border of an element to Hex BD966E is called "border". The border property can be set on classes, ids or directly on the HTML element.

This example shows the color as border, it can be applied via the CSS property "border" or "border-color".

```
.border, #border, table{ border:4px solid
#BD966E }
```

If only the border color should be changed use the property `border-color`.

```
.border{ border-color:#BD966E }
```

If you want to add a box shadow in that color use:

Here you see how a box with a 4 pixel #BD966E colored shadow looks like.

```
.boxshadow{ -moz-box-shadow:4px 4px 4px  
4px #BD966E; -webkit-box-shadow:4px 4px  
4px 4px #BD966E; box-shadow:4px 4px 4px  
4px #BD966E }
```

Background

The CSS property to change the background color of an element to Hex BD966E is called "background". The background property can be set on classes, ids or directly on the HTML element.

```
.background, #background, body{  
background:#BD966E }
```

If only the background color should be changed can be used:

```
.background{ background-color:#BD966E }
```

This example shows the color as background, it is applied via the CSS property "background".

To optimize and compress your CSS code, you can use our [online CSS compressor and optimizer](#) based on csstidy. If you want to create a linear or radial gradient as background or border, check our [CSS Gradient Generator](#).

Hey! You found this booklet interesting? Support Converting Colors with the new Membership Option!

The pro membership hides all ads, plus gives you double the colors in the color bucket, and more awesome pro features!

[Learn more, Memberships starting at \\$2.50/m!](#)

**Follow me
on Twitter!**

@ConvertingColor