

Converting Colors

Hex(BD9C9C)

Have a look what the booklet for
Hex(BD9C9C) contains.

Hex(BD9C9C)	3
<i>Conversions</i>	4
<i>Details</i>	6
<i>Harmonies</i>	11
<i>Previews</i>	23
<i>Color Blindness Simulation</i>	26
<i>CSS Examples</i>	29

Color

Hex(BD9C9C)

Conversions

Conversions Part 1

Format	Color
Hex	BD9C9C
RGB	189, 156, 156
RGB Percent	74%, 61%, 61%
CMY	0.2588, 0.3882, 0.3882
CMYK	0.00, 0.17, 0.17, 0.26
HSL	0°, 20%, 68%
HSV	0°, 17%, 74%
XYZ	38.8755, 36.9961, 36.5445
YIQ	165.8670, 19.6680, 6.9960

Conversions

Conversions Part 2

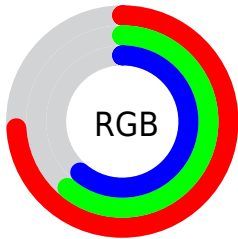
Format	Color
RYB	189, 156, 156
Decimal	12426396
CIELab	67.27, 12.21, 4.59
CIElCh	67, 13.043, 20.586
Yxy	36.9961, 0.3458, 0.3291
Android (android.graphics.Color)	4290616476 (0xFFBD9C9C)
YUV	165.8670, -4.8644, 20.2876
Hunter-Lab	60.8244, 7.6444, 6.9545

Details

The Hex color **BD9C9C** is a light color, and the websafe version is hex **CC9999**. A complement of this color would be **9CBDBD**, and the grayscale version is **A6A6A6**.

A 20% lighter version of the original color is **F6D3D2**, and **876969** is the 20% darker color. If you saturate the color by 10%, you get **BD8989**, and if you desaturate by 10%, it is **BDAFAF**.

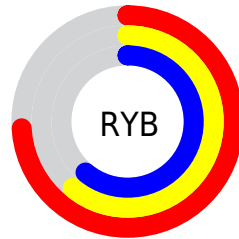
Distribution



Red (74%)

Green (61%)

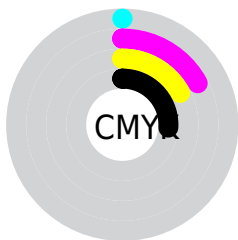
Blue (61%)



Red (74%)

Yellow (61%)

Blue (61%)

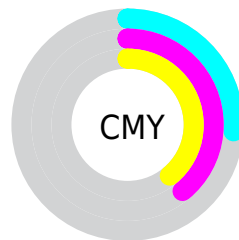


Cyan (0%)

Magenta (17%)

Yellow (17%)

Black (26%)



Cyan (26%)

Magenta (39%)

Yellow (39%)

Brightness & Saturation Gradients

These gradients show how the Hex color BD9C9C changes by changing the brightness by 10 percent. The first figure shows a shift by +10% for each color and the second figure -10%.

Similar to the brightness gradients but the following saturation gradients show a change of the Hex color BD9C9C by changing the saturation by 10% instead.

 BD9C9C

FFFFFF

 F6D3D2

 FFEFEF

 BD9C9C

 A28282

 876969

 6E5151

 55393A

 3D2424

 270F0F

 010000

 000000

 BD9C9C

 BD9C9C

 BD8989

 BDAFAF

 BD7676

 BDC2C2

 BD6363

 BDD5D5

 BD5050

 BDE8E8

 BD3E3E

 BDFBFB

 BD2B2B

 BDFFFF

 BD1818

 BD0505

 BD0000

Harmonies

Analogous

The Analogous color harmony consists of three colors that are next to each other on the color wheel.



B99CA8



BD9C9C



BA9E92

Triad

The Triadic color harmony groups three colors that are evenly spaced from another and form a triangle on the color wheel.



BD9C9C



97A995



93A6BB

Complementary

The Complementary color scheme is a pair of colors which are on the opposite of each other on the color wheel.



BD9C9C



9CBDBD

Split Complementary

Split-complementary colors differ from the complementary color scheme. The scheme consists of three colors, the original color and two neighbors of the complement color.



88A9B5



BD9C9C



8CAAA0

Square

The Square scheme is like the rectangle color scheme, but the four colors are evenly spaced on the color wheel.



BD9C9C



A5A68E



86ABAC



A1A2BA

Rectangle

The Rectangle color scheme consists of four colors that form a rectangle on the color wheel.



BD9C9C



B4A08E



86ABAC



8FA7BA

Sweetspot

The Sweet Spot groups the original color and five complimentary colors.



BD9C9C



F5E9E9



BD9CBD



7A7373



FAFAFA



7A7A7A

Same Dimension

The Same Dimension uses a secret algorithm to generate beautiful new colors.



BD9C9C



F5C1C1



BDAD9C



5E5555



9E0000



1F0000

Inverse Universe

The Inverse Universe completely reimagines the original color for something new.



9CBDBD



C1F5F5



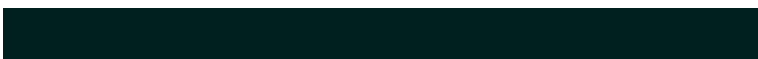
9CADBD



555E5E



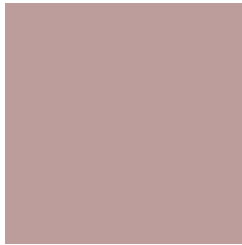
009E9E



001F1F

Previews

White Background



This preview shows how the Hex color BD9C9C looks on a white background.

Color Contrast Check

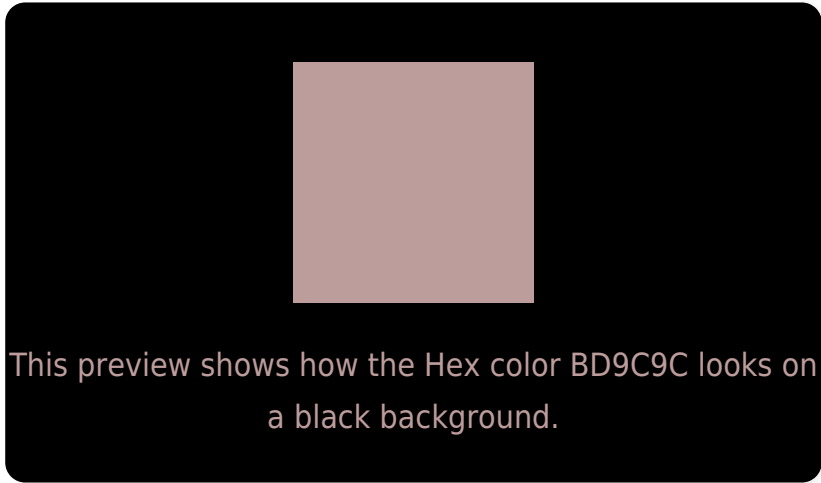
Large Text (above 18pt) WCAG AA × Fail

Any Text WCAG AA × Fail

Large Text (above 18pt) WCAG AAA × Fail

Any Text WCAG AAA × Fail

Black Background



Color Contrast Check

Large Text (above 18pt) WCAG AA ✓ Pass

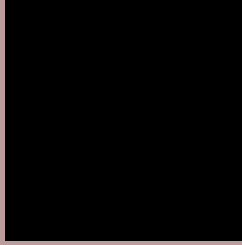
Any Text WCAG AA ✓ Pass

Large Text (above 18pt) WCAG AAA ✓ Pass

Any Text WCAG AAA ✓ Pass

If you want to check with other color combinations, try the [Color Contrast Checker](#).

Hex BD9C9C Background



This preview shows how black text looks on a background with the Hex color BD9C9C.



This preview shows how white text looks on a background with the Hex color BD9C9C.

Color Blindness Simulation

Color vision deficiency is a very complex topic, and I could not describe the different causes any better than Wikipedia does, so if you want to learn more, you should check out their [article about color blindness](#).


Dichromacy



Original Color
BD9C9C

Protanopia
A8A3A0

Deuteranopia
B79E9C



Tritanopia
BE9AA6

Trichromacy



Original Color

BD9C9C

Protanomaly

B0A09F

Deuteranomaly

B99D9C

Tritanomaly

BE9BA2

Monochromacy



Original Color

BD9C9C

Achromatopsia

A6A6A6

Achromatomaly

AEA2A2

CSS Examples

Text

The CSS property to change the color of the text to Hex BD9C9C is called "color". The color property can be set on classes, ids or directly on the HTML element.

This example shows how text in the color #BD9C9C looks like.

```
.text, #text, p{  
    color:#BD9C9C  
}
```

If you want to add a text shadow in that color use the text-shadow property, you can generate a text shadow directly with our [CSS Text Shadow Generator](#).

Here you see how black text with a 4 pixel #BD9C9C colored shadow looks like.

```
.shadow{ text-shadow: 4px 4px 2px #BD9C9C
}
```

Border

The CSS property to change the border of an element to Hex BD9C9C is called "border". The border property can be set on classes, ids or directly on the HTML element.

This example shows the color as border, it can be applied via the CSS property "border" or "border-color".

```
.border, #border, table{ border:4px solid
#BD9C9C }
```

If only the border color should be changed use the property `border-color`.

```
.border{ border-color:#BD9C9C }
```

If you want to add a box shadow in that color use:

Here you see how a box with a 4 pixel #BD9C9C colored shadow looks like.

```
.boxshadow{ -moz-box-shadow:4px 4px 4px  
4px #BD9C9C; -webkit-box-shadow:4px 4px  
4px 4px #BD9C9C; box-shadow:4px 4px 4px  
4px #BD9C9C }
```

Background

The CSS property to change the background color of an element to Hex BD9C9C is called "background". The background property can be set on classes, ids or directly on the HTML element.

```
.background, #background, body{  
background:#BD9C9C }
```

If only the background color should be changed can be used:

```
.background{ background-color:#BD9C9C }
```

This example shows the color as background, it is applied via the CSS property "background".

To optimize and compress your CSS code, you can use our [online CSS compressor and optimizer](#) based on csstidy. If you want to create a linear or radial gradient as background or border, check our [CSS Gradient Generator](#).

Hey! You found this booklet interesting? Support Converting Colors with the new Membership Option!

The pro membership hides all ads, plus gives you double the colors in the color bucket, and more awesome pro features!

[Learn more, Memberships starting at \\$2.50/m!](#)

**Follow me
on Twitter!**

@ConvertingColor