

Converting Colors

Hex(BD9D87)

Have a look what the booklet for
Hex(BD9D87) contains.

| | |
|--|----|
| Hex(BD9D87) | 3 |
| <i>Conversions</i> | 4 |
| <i>Details</i> | 6 |
| <i>Harmonies</i> | 11 |
| <i>Previews</i> | 23 |
| <i>Color Blindness Simulation</i> | 26 |
| <i>CSS Examples</i> | 29 |

Color

Hex(BD9D87)

Conversions

Conversions Part 1

| Format | Color |
|---------------|----------------------------|
| Hex | BD9D87 |
| RGB | 189, 157, 135 |
| RGB Percent | 74%, 62%, 53% |
| CMY | 0.2588, 0.3843, 0.4706 |
| CMYK | 0.00, 0.17, 0.29, 0.26 |
| HSL | 24°, 29%, 64% |
| HSV | 24°, 29%, 74% |
| XYZ | 37.4164, 36.6820, 28.0300 |
| YIQ | 164.0600, 26.1340, -0.0580 |

Conversions

Conversions Part 2

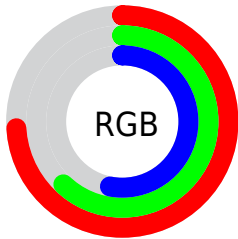
| Format | Color |
|-------------------------------------|---|
| RYB | 189, 172, 135 |
| Decimal | 12426631 |
| CIELab | 67.04, 8.53, 15.94 |
| CIELCh | 67, 18.077, 61.860 |
| Yxy | 36.6820, 0.3664, 0.3592 |
| Android (android.graphics.Color) | 4290616711 (0xFFBD9D87) |
| YUV | 164.0600, -14.3266, 21.8724 |
| Hunter-Lab | 60.5657, 4.2842, 14.9564 |

Details

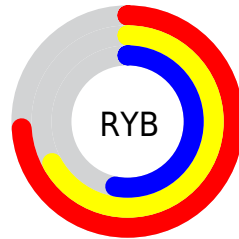
The Hex color **BD9D87** is a light color, and the websafe version is hex **CC9999**. A complement of this color would be **87A7BD**, and the grayscale version is **A4A4A4**.

A 20% lighter version of the original color is **F6D4BC**, and **876A55** is the 20% darker color. If you saturate the color by 10%, you get **BD9274**, and if you desaturate by 10%, it is **BDA89A**.

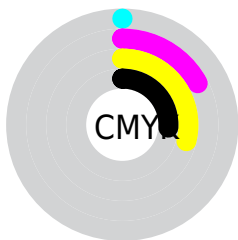
Distribution



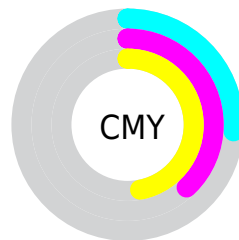
- Red (74%)
- Green (62%)
- Blue (53%)



- Red (74%)
- Yellow (67%)
- Blue (53%)



- Cyan (0%)
- Magenta (17%)
- Yellow (29%)
- Black (26%)



- Cyan (26%)
- Magenta (38%)
- Yellow (47%)

Brightness & Saturation Gradients

These gradients show how the Hex color BD9D87 changes by changing the brightness by 10 percent. The first figure shows a shift by +10% for each color and the second figure -10%.

Similar to the brightness gradients but the following saturation gradients show a change of the Hex color BD9D87 by changing the saturation by 10% instead.

 BD9D87

 BD9D87

FFFFFF

 A2836E

 F6D4BC

 876A55

 FFF0D8

 6D523E

 FFFFF5

 543B28

 3C2513

 251000

 000000

 BD9D87

 BD9D87

 BD9274

 BDA89A

 BD8761

 BDB3AD

 BD7B4E

 BDBFC0

 BD703B

 BDCAD3

 BD6528

 BDD5E6

 BD5A16

 BDE0F8

 BD4F03

 BDEBFF

 BD4D00

 BDF7FF

 BDFFFF

Harmonies

Analogous

The Analogous color harmony consists of three colors that are next to each other on the color wheel.



C59993



BD9D87



AFA283

Triad

The Triadic color harmony groups three colors that are evenly spaced from another and form a triangle on the color wheel.



BD9D87



7CADA4



A79FBF

Complementary

The Complementary color scheme is a pair of colors which are on the opposite of each other on the color wheel.



BD9D87



87A7BD

Split Complementary

Split-complementary colors differ from the complementary color scheme. The scheme consists of three colors, the original color and two neighbors of the complement color.



92A4C3



BD9D87



77ACB4

Square

The Square scheme is like the rectangle color scheme, but the four colors are evenly spaced on the color wheel.



BD9D87



8AAB93



7FA9BF



B99AB3

Rectangle

The Rectangle color scheme consists of four colors that form a rectangle on the color wheel.



BD9D87



A3A685



7FA9BF



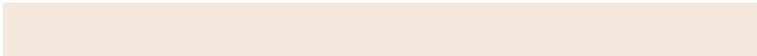
A0A1C1

Sweetspot

The Sweet Spot groups the original color and five complimentary colors.



BD9D87



F5E8DF



BD87A7



7A726D



FAFAFA



7A7A7A

Same Dimension

The Same Dimension uses a secret algorithm to generate beautiful new colors.



BD9D87



F5C3A2



BDB887



5E5955



9E4000



1F0C00

Inverse Universe

The Inverse Universe completely reimagines the original color for something new.



87A7BD



A2D3F5



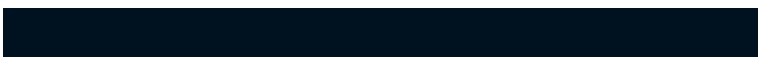
878CBD



555B5E



005E9E



00121F

Previews

White Background



This preview shows how the Hex color BD9D87 looks on a white background.

Color Contrast Check

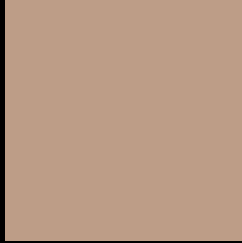
Large Text (above 18pt) WCAG AA × Fail

Any Text WCAG AA × Fail

Large Text (above 18pt) WCAG AAA × Fail

Any Text WCAG AAA × Fail

Black Background



This preview shows how the Hex color BD9D87 looks on a black background.

Color Contrast Check

Large Text (above 18pt) WCAG AA ✓ Pass

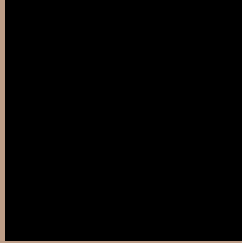
Any Text WCAG AA ✓ Pass

Large Text (above 18pt) WCAG AAA ✓ Pass

Any Text WCAG AAA ✓ Pass

If you want to check with other color combinations, try the [Color Contrast Checker](#).

Hex BD9D87 Background



This preview shows how black text looks on a background with the Hex color BD9D87.



This preview shows how white text looks on a background with the Hex color BD9D87.

Color Blindness Simulation

Color vision deficiency is a very complex topic, and I could not describe the different causes any better than Wikipedia does, so if you want to learn more, you should check out their [article about color blindness](#).

Dichromacy





Tritanopia
C099A5

Trichromacy



Original Color
BD9D87

Protanomaly
B2A189

Deuteranomaly
BD9D87

Tritanomaly
BF9A9A

Monochromacy



Original Color
BD9D87

Achromatopsia
A4A4A4

Achromatomaly
ADA199

CSS Examples

Text

The CSS property to change the color of the text to Hex BD9D87 is called "color". The color property can be set on classes, ids or directly on the HTML element.

This example shows how text in the color #BD9D87 looks like.

```
.text, #text, p{  
    color:#BD9D87  
}
```

If you want to add a text shadow in that color use the text-shadow property, you can generate a text shadow directly with our [CSS Text Shadow Generator](#).

Here you see how black text with a 4 pixel #BD9D87 colored shadow looks like.

```
.shadow{ text-shadow: 4px 4px 2px #BD9D87
}
```

Border

The CSS property to change the border of an element to Hex BD9D87 is called "border". The border property can be set on classes, ids or directly on the HTML element.

This example shows the color as border, it can be applied via the CSS property "border" or "border-color".

```
.border, #border, table{ border:4px solid
#BD9D87 }
```

If only the border color should be changed use the property `border-color`.

```
.border{ border-color:#BD9D87 }
```

If you want to add a box shadow in that color use:

Here you see how a box with a 4 pixel #BD9D87 colored shadow looks like.

```
.boxshadow{ -moz-box-shadow:4px 4px 4px  
4px #BD9D87; -webkit-box-shadow:4px 4px  
4px 4px #BD9D87; box-shadow:4px 4px 4px  
4px #BD9D87 }
```

Background

The CSS property to change the background color of an element to Hex BD9D87 is called "background". The background property can be set on classes, ids or directly on the HTML element.

```
.background, #background, body{  
background:#BD9D87 }
```

If only the background color should be changed can be used:

```
.background{ background-color:#BD9D87 }
```

This example shows the color as background, it is applied via the CSS property "background".

To optimize and compress your CSS code, you can use our [online CSS compressor and optimizer](#) based on csstidy. If you want to create a linear or radial gradient as background or border, check our [CSS Gradient Generator](#).

Hey! You found this booklet interesting? Support Converting Colors with the new Membership Option!

The pro membership hides all ads, plus gives you double the colors in the color bucket, and more awesome pro features!

[Learn more, Memberships starting at \\$2.50/m!](#)

**Follow me
on Twitter!**

@ConvertingColor