

Converting Colors

Hex(BDA284)

Have a look what the booklet for
Hex(BDA284) contains.

Hex(BDA284)	3
<i>Conversions</i>	4
<i>Details</i>	6
<i>Harmonies</i>	11
<i>Previews</i>	23
<i>Color Blindness Simulation</i>	26
<i>CSS Examples</i>	29

Color

Hex(BDA284)

Conversions

Conversions Part 1

Format	Color
Hex	BDA284
RGB	189, 162, 132
RGB Percent	74%, 64%, 52%
CMY	0.2588, 0.3647, 0.4824
CMYK	0.00, 0.14, 0.30, 0.26
HSL	32°, 30%, 63%
HSV	32°, 30%, 74%
XYZ	38.0715, 38.3254, 27.2208
YIQ	166.6530, 25.7220, -3.6060

Conversions

Conversions Part 2

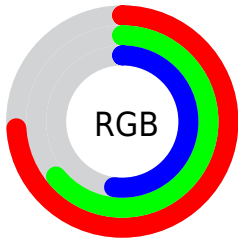
Format	Color
RYB	183, 189, 132
Decimal	12427908
CIELab	68.26, 5.38, 19.28
CIElCh	68, 20.021, 74.399
Yxy	38.3254, 0.3674, 0.3699
Android (android.graphics.Color)	4290617988 (0xFFBDA284)
YUV	166.6530, -17.0839, 19.5983
Hunter-Lab	61.9075, 1.4345, 17.2654

Details

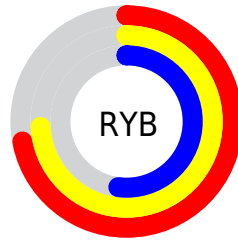
The Hex color **BDA284** is a light color, and the websafe version is hex **CC9966**. A complement of this color would be **849FBD**, and the grayscale version is **A7A7A7**.

A 20% lighter version of the original color is **F6D9B9**, and **876E52** is the 20% darker color. If you saturate the color by 10%, you get **BD9971**, and if you desaturate by 10%, it is **BDAB97**.

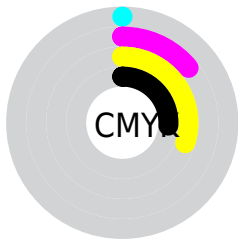
Distribution



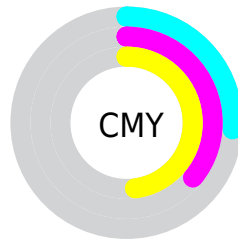
- Red (74%)
- Green (64%)
- Blue (52%)



- Red (72%)
- Yellow (74%)
- Blue (52%)



- Cyan (0%)
- Magenta (14%)
- Yellow (30%)
- Black (26%)



- Cyan (26%)
- Magenta (36%)
- Yellow (48%)

Brightness & Saturation Gradients

These gradients show how the Hex color BDA284 changes by changing the brightness by 10 percent. The first figure shows a shift by +10% for each color and the second figure -10%.

Similar to the brightness gradients but the following saturation gradients show a change of the Hex color BDA284 by changing the saturation by 10% instead.



BDA284



BDA284

FFFFFF



A2886B



F6D9B9



876E52



FFF5D5



6D563B



FFFFF1



543F25



3C2910



251500



000000



BDA284



BDA284



BD9971



BDAB97

 BD905E

 BDB4AA

 BD874B

 BDBDBD

 BD7E38

 BDC6D0

 BD7526

 BDCFE3

 BD6C13

 BDD8F5

 BD6300

 BDE1FF

 BDEAFF

 BDF3FF

Harmonies

Analogous

The Analogous color harmony consists of three colors that are next to each other on the color wheel.



C99D8E



BDA284



ABA883

Triad

The Triadic color harmony groups three colors that are evenly spaced from another and form a triangle on the color wheel.



BDA284



76B1AF



B49FC0

Complementary

The Complementary color scheme is a pair of colors which are on the opposite of each other on the color wheel.



BDA284



849FBD

Split Complementary

Split-complementary colors differ from the complementary color scheme. The scheme consists of three colors, the original color and two neighbors of the complement color.



9DA5C9



BDA284



77AFBF

Square

The Square scheme is like the rectangle color scheme, but the four colors are evenly spaced on the color wheel.



BDA284



83B09C



86ABC9



C59BB1

Rectangle

The Rectangle color scheme consists of four colors that form a rectangle on the color wheel.



BDA284



9EAC88



86ABC9



ADA1C4

Sweetspot

The Sweet Spot groups the original color and five complimentary colors.



BDA284



F5EADF



BD84A0



7A746D



FAFAFA



7A7A7A

Same Dimension

The Same Dimension uses a secret algorithm to generate beautiful new colors.



BDA284



F5CB9D



BCBD84



5E5A55



9E5300



1F1000

Inverse Universe

The Inverse Universe completely reimagines the original color for something new.



849FBD



9DC6F5



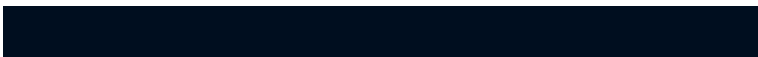
8584BD



55595E



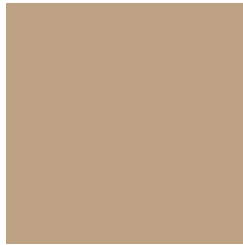
004B9E



000E1F

Previews

White Background



This preview shows how the Hex color BDA284 looks on a white background.

Color Contrast Check

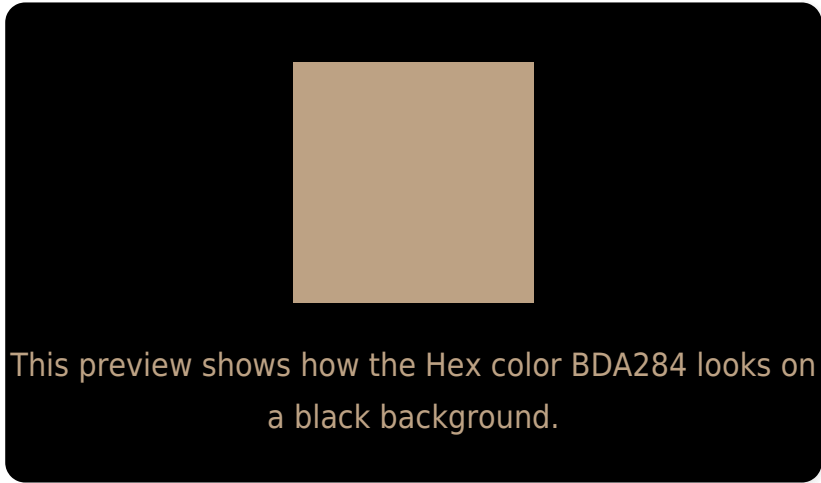
Large Text (above 18pt) WCAG AA × Fail

Any Text WCAG AA × Fail

Large Text (above 18pt) WCAG AAA × Fail

Any Text WCAG AAA × Fail

Black Background



Color Contrast Check

Large Text (above 18pt) WCAG AA ✓ Pass

Any Text WCAG AA ✓ Pass

Large Text (above 18pt) WCAG AAA ✓ Pass

Any Text WCAG AAA ✓ Pass

If you want to check with other color combinations, try the [Color Contrast Checker](#).

Hex BDA284 Background



This preview shows how black text looks on a background with the Hex color BDA284.

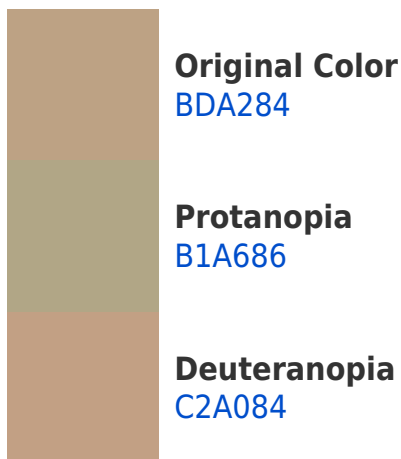


This preview shows how white text looks on a background with the Hex color BDA284.

Color Blindness Simulation

Color vision deficiency is a very complex topic, and I could not describe the different causes any better than Wikipedia does, so if you want to learn more, you should check out their [article about color blindness](#).

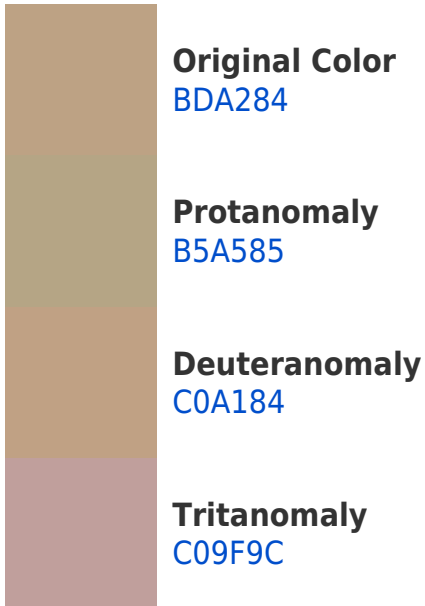
Dichromacy



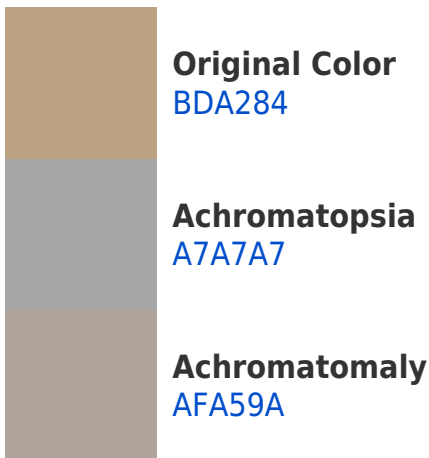


Tritanopia
C19DA9

Trichromacy



Monochromacy



CSS Examples

Text

The CSS property to change the color of the text to Hex BDA284 is called "color". The color property can be set on classes, ids or directly on the HTML element.

This example shows how text in the color #BDA284 looks like.

```
.text, #text, p{  
    color:#BDA284  
}
```

If you want to add a text shadow in that color use the text-shadow property, you can generate a text shadow directly with our [CSS Text Shadow Generator](#).

Here you see how black text with a 4 pixel #BDA284 colored shadow looks like.

```
.shadow{ text-shadow: 4px 4px 2px #BDA284
}
```

Border

The CSS property to change the border of an element to Hex BDA284 is called "border". The border property can be set on classes, ids or directly on the HTML element.

This example shows the color as border, it can be applied via the CSS property "border" or "border-color".

```
.border, #border, table{ border:4px solid
#BDA284 }
```

If only the border color should be changed use the property `border-color`.

```
.border{ border-color:#BDA284 }
```

If you want to add a box shadow in that color use:

Here you see how a box with a 4 pixel #BDA284 colored shadow looks like.

```
.boxshadow{ -moz-box-shadow:4px 4px 4px  
4px #BDA284; -webkit-box-shadow:4px 4px  
4px 4px #BDA284; box-shadow:4px 4px 4px  
4px #BDA284 }
```

Background

The CSS property to change the background color of an element to Hex BDA284 is called "background". The background property can be set on classes, ids or directly on the HTML element.

```
.background, #background, body{  
background:#BDA284 }
```

If only the background color should be changed can be used:

```
.background{ background-color:#BDA284 }
```

This example shows the color as background, it is applied via the CSS property "background".

To optimize and compress your CSS code, you can use our [online CSS compressor and optimizer](#) based on csstidy. If you want to create a linear or radial gradient as background or border, check our [CSS Gradient Generator](#).

Hey! You found this booklet interesting? Support Converting Colors with the new Membership Option!

The pro membership hides all ads, plus gives you double the colors in the color bucket, and more awesome pro features!

[Learn more, Memberships starting at \\$2.50/m!](#)

**Follow me
on Twitter!**

@ConvertingColor