

# Converting Colors

Hex(BDABAE)

Have a look what the booklet for  
Hex(BDABAE) contains.

<b>Hex(BDABAE)</b> .....	3
<i><b>Conversions</b></i> .....	4
<i><b>Details</b></i> .....	6
<i><b>Harmonies</b></i> .....	11
<i><b>Previews</b></i> .....	23
<i><b>Color Blindness Simulation</b></i> .....	26
<i><b>CSS Examples</b></i> .....	29

# **Color**

**Hex(BDABAE)**

# Conversions

## Conversions Part 1

Format	Color
Hex	BDABAE
RGB	189, 171, 174
RGB Percent	74%, 67%, 68%
CMY	0.2588, 0.3294, 0.3176
CMYK	0.00, 0.10, 0.08, 0.26
HSL	350°, 12%, 71%
HSV	350°, 10%, 74%
XYZ	43.1892, 43.0006, 46.0680
YIQ	176.7240, 9.7650, 4.7490

# Conversions

## Conversions Part 2

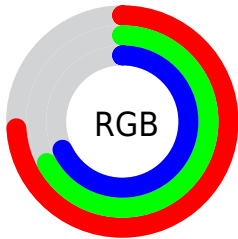
<b>Format</b>	<b>Color</b>
R <sub>Y</sub> B	189, 171, 174
Decimal	12430254
CIE Lab	71.56, 7.00, 0.81
CIE LCh	72, 7.052, 6.620
Yxy	43.0006, 0.3266, 0.3251
Android (android.graphics.Color)	4290620334 (0xFFBDABAE)
YUV	176.7240, -1.3429, 10.7661
Hunter-Lab	65.5749, 2.8083, 4.2496

# Details

The Hex color **BDABAE** is a light color, and the websafe version is hex **999999**. A complement of this color would be **ABBDBA**, and the grayscale version is **B1B1B1**.

A 20% lighter version of the original color is **F5E2E5**, and **88777A** is the 20% darker color. If you saturate the color by 10%, you get **BD989E**, and if you desaturate by 10%, it is **BDBEBE**.

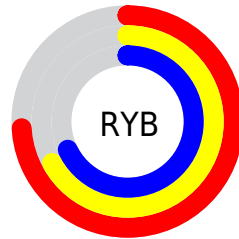
# Distribution



Red (74%)

Green (67%)

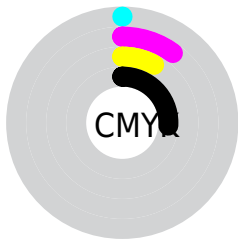
Blue (68%)



Red (74%)

Yellow (67%)

Blue (68%)

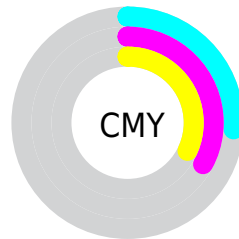


Cyan (0%)

Magenta (10%)

Yellow (8%)

Black (26%)



Cyan (26%)

Magenta (33%)

Yellow (32%)

# Brightness & Saturation Gradients

These gradients show how the Hex color BDABAE changes by changing the brightness by 10 percent. The first figure shows a shift by +10% for each color and the second figure -10%.

Similar to the brightness gradients but the following saturation gradients show a change of the Hex color BDABAE by changing the saturation by 10% instead.



 BDABAE

 BDABAE

FFFFFF

 A29093

 F5E2E5

 88777A

 6E5E61

 564649

 3E3033

 281B1E

 150004

 000000

 BDABAE

 BDABAE

 BD989E

 BDBEBE

 BD858F

 BDD1CD

 BD727F

 BDE4DD

 BD5F6F

 BDF7ED

 BD4C5F

 BDFFFD

 BD3A50

 BDFFFF

 BD2740

 BD1430

 BD0120

# Harmonies

## Analogous

The Analogous color harmony consists of three colors that are next to each other on the color wheel.



B9ACB4



BDABAE



BDACA8

# Triad

The Triadic color harmony groups three colors that are evenly spaced from another and form a triangle on the color wheel.



BDABAE



ACB1A5



A4B1BB

# Complementary

The Complementary color scheme is a pair of colors which are on the opposite of each other on the color wheel.



BDABAE



ABBDBA

# Split Complementary

Split-complementary colors differ from the complementary color scheme. The scheme consists of three colors, the original color and two neighbors of the complement color.



A0B3B7



BDABAE



A5B3AA

# Square

The Square scheme is like the rectangle color scheme, but the four colors are evenly spaced on the color wheel.



BDABAE



B3AFA3



A0B3B0



AAAFBC

# Rectangle

The Rectangle color scheme consists of four colors that form a rectangle on the color wheel.



BDABAE



BBADA5



A0B3B0



A2B2BA

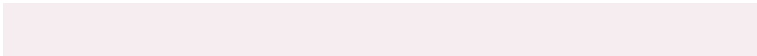


# Sweetspot

The Sweet Spot groups the original color and five complimentary colors.



BDABAE



F5EDEF



BAABBD



7A7676



FAFafa



7A7A7A



# Same Dimension

The Same Dimension uses a secret algorithm to generate beautiful new colors.



BDABAE



F5DADE



BDB1AB



5E5556



9E001A



1F0005



# Inverse Universe

The Inverse Universe completely reimagines the original color for something new.



BDABAE



F5DADE



ABB7BD



5E5556



9E001A

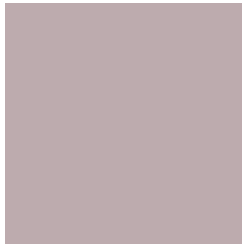


1F0005



# Previews

## White Background



This preview shows how the Hex color BDABAE looks on a white background.

## Color Contrast Check

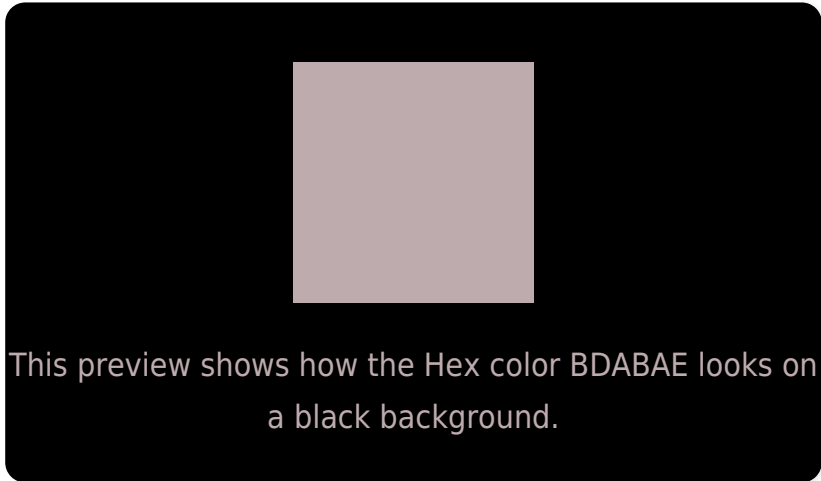
Large Text (above 18pt) WCAG AA × Fail

Any Text WCAG AA × Fail

Large Text (above 18pt) WCAG AAA × Fail

Any Text WCAG AAA × Fail

# Black Background



## Color Contrast Check

Large Text (above 18pt) WCAG AA ✓ Pass

Any Text WCAG AA ✓ Pass

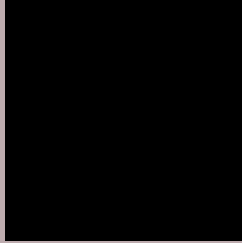
Large Text (above 18pt) WCAG AAA ✓ Pass

Any Text WCAG AAA ✓ Pass

If you want to check with other color combinations, try the [Color Contrast Checker](#).



## Hex BDABAE Background



This preview shows how black text looks on a background with the Hex color BDABAE.



This preview shows how white text looks on a background with the Hex color BDABAE.

# Color Blindness Simulation

Color vision deficiency is a very complex topic, and I could not describe the different causes any better than Wikipedia does, so if you want to learn more, you should check out their [article about color blindness](#).

## Dichromacy



**Original Color**  
BDABAE

**Protanopia**  
B2AEB0

**Deuteranopia**  
C1AAAE



# Trichromacy



**Original Color**  
BDABAE

**Protanomaly**  
B6ADAF

**Deuteranomaly**  
C0AAAE

**Tritanomaly**  
BEAAB4

# Monochromacy



**Original Color**  
BDABAE

**Achromatopsia**  
B1B1B1

**Achromatomaly**  
B5AFB0

# CSS Examples

## Text

The CSS property to change the color of the text to Hex BDABAE is called "color". The color property can be set on classes, ids or directly on the HTML element.

This example shows how text in the color #BDABAE looks like.

```
.text, #text, p{  
    color:#BDABAE  
}
```

If you want to add a text shadow in that color use the text-shadow property, you can generate a text shadow directly with our [CSS Text Shadow Generator](#).

Here you see how black text with a 4 pixel #BDABAE colored shadow looks like.

```
.shadow{ text-shadow: 4px 4px 2px #BDABAE
}
```

## Border

The CSS property to change the border of an element to Hex BDABAE is called "border". The border property can be set on classes, ids or directly on the HTML element.

This example shows the color as border, it can be applied via the CSS property "border" or "border-color".

```
.border, #border, table{ border:4px solid
#BDABAE }
```

If only the border color should be changed use the property `border-color`.

```
.border{ border-color:#BDABAE }
```

If you want to add a box shadow in that color use:

Here you see how a box with a 4 pixel #BDABAE colored shadow looks like.

```
.boxshadow{ -moz-box-shadow:4px 4px 4px  
4px #BDABAE; -webkit-box-shadow:4px 4px  
4px 4px #BDABAE; box-shadow:4px 4px 4px  
4px #BDABAE }
```

# Background

The CSS property to change the background color of an element to Hex BDABAE is called "background". The background property can be set on classes, ids or directly on the HTML element.

```
.background, #background, body{  
background:#BDABAE }
```

If only the background color should be changed can be used:

```
.background{ background-color:#BDABAE }
```

This example shows the color as background, it is applied via the CSS property "background".

To optimize and compress your CSS code, you can use our [online CSS compressor and optimizer](#) based on csstidy. If you want to create a linear or radial gradient as background or border, check our [CSS Gradient Generator](#).



Hey! You found this booklet interesting? Support Converting Colors with the new Membership Option!

The pro membership hides all ads, plus gives you double the colors in the color bucket, and more awesome pro features!

**[Learn more, Memberships starting at \\$2.50/m!](#)**

**Follow me  
on Twitter!**

@ConvertingColor