

Converting Colors

Hex(BDABB1)

Have a look what the booklet for
Hex(BDABB1) contains.

Hex(BDABB1)	3
<i>Conversions</i>	4
<i>Details</i>	6
<i>Harmonies</i>	11
<i>Previews</i>	23
<i>Color Blindness Simulation</i>	26
<i>CSS Examples</i>	29

Color

Hex(BDABB1)

Conversions

Conversions Part 1

Format	Color
Hex	BDABB1
RGB	189, 171, 177
RGB Percent	74%, 67%, 69%
CMY	0.2588, 0.3294, 0.3059
CMYK	0.00, 0.10, 0.06, 0.26
HSL	340°, 12%, 71%
HSV	340°, 10%, 74%
XYZ	43.4850, 43.1190, 47.6259
YIQ	177.0660, 8.8020, 5.6820

Conversions

Conversions Part 2

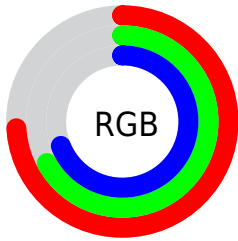
Format	Color
RYB	189, 171, 177
Decimal	12430257
CIELab	71.64, 7.53, -0.72
CIElCh	72, 7.569, 354.523
Yxy	43.1190, 0.3240, 0.3212
Android (android.graphics.Color)	4290620337 (0xFFBDABB1)
YUV	177.0660, -0.0325, 10.4661
Hunter-Lab	65.6650, 3.2933, 2.9634

Details

The Hex color **BDABB1** is a light color, and the websafe version is hex **999999**. A complement of this color would be **ABBDB7**, and the grayscale version is **B1B1B1**.

A 20% lighter version of the original color is **F5E2E9**, and **88777C** is the 20% darker color. If you saturate the color by 10%, you get **BD98A4**, and if you desaturate by 10%, it is **BDBEBE**.

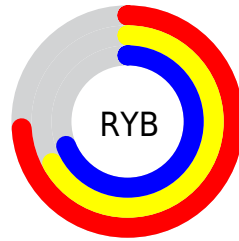
Distribution



Red (74%)

Green (67%)

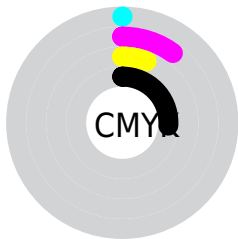
Blue (69%)



Red (74%)

Yellow (67%)

Blue (69%)

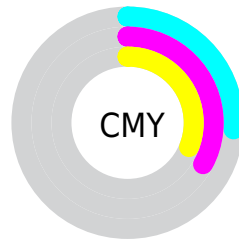


Cyan (0%)

Magenta (10%)

Yellow (6%)

Black (26%)



Cyan (26%)

Magenta (33%)

Yellow (31%)

Brightness & Saturation Gradients

These gradients show how the Hex color BDABB1 changes by changing the brightness by 10 percent. The first figure shows a shift by +10% for each color and the second figure -10%.

Similar to the brightness gradients but the following saturation gradients show a change of the Hex color BDABB1 by changing the saturation by 10% instead.

 BDABB1

 BDABB1

FFFFFF

 A29096

 F5E2E9

 88777C

 6E5E64

 56464C

 3E3035

 281B20

 150008

 000000

 BDABB1

 BDABB1

 BD98A4

 BD8E8E

 BD8598

 BDD1CA

 BD728B

 BDE4D7

 BD5F7F

 BDF7E3

 BD4C72

 BDFFF0

 BD3A65

 BDFFFD

 BD2759

 BDFFFF

 BD144C

 BD0140

Harmonies

Analogous

The Analogous color harmony consists of three colors that are next to each other on the color wheel.



B7ACB8



BDABB1



BFABAA

Triad

The Triadic color harmony groups three colors that are evenly spaced from another and form a triangle on the color wheel.



BDABB1



AFB1A3



A1B2BA

Complementary

The Complementary color scheme is a pair of colors which are on the opposite of each other on the color wheel.



BDABB1



ABBDB7

Split Complementary

Split-complementary colors differ from the complementary color scheme. The scheme consists of three colors, the original color and two neighbors of the complement color.



9FB4B5



BDABB1



A7B3A7

Square

The Square scheme is like the rectangle color scheme, but the four colors are evenly spaced on the color wheel.



BDABB1



B7AFA2



A1B4AE



A7B0BD

Rectangle

The Rectangle color scheme consists of four colors that form a rectangle on the color wheel.



BDABB1



BEACA6



A1B4AE



A0B3B9

Sweetspot

The Sweet Spot groups the original color and five complimentary colors.



BDABB1



F5EDF0



B7ABBD



7A7677



FAFAFA



7A7A7A

Same Dimension

The Same Dimension uses a secret algorithm to generate beautiful new colors.



BDABB1



F5DAE3



BDAEAB



5E5558



9E0035



1F000A

Inverse Universe

The Inverse Universe completely reimagines the original color for something new.



BDABB1



F5DAE3



ABBABD



5E5558



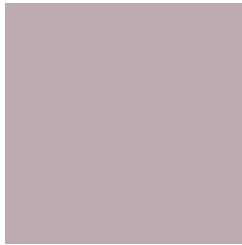
9E0035



1F000A

Previews

White Background



This preview shows how the Hex color BDABB1 looks on a white background.

Color Contrast Check

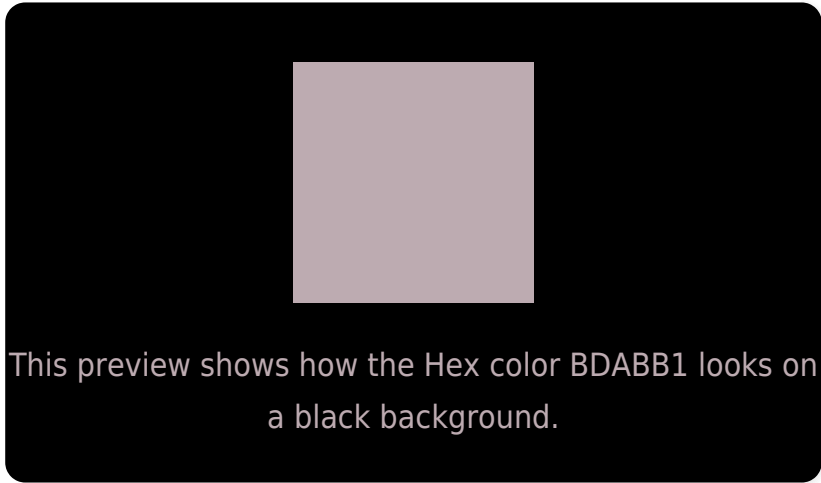
Large Text (above 18pt) WCAG AA × Fail

Any Text WCAG AA × Fail

Large Text (above 18pt) WCAG AAA × Fail

Any Text WCAG AAA × Fail

Black Background



Color Contrast Check

Large Text (above 18pt) WCAG AA ✓ Pass

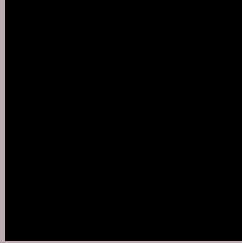
Any Text WCAG AA ✓ Pass

Large Text (above 18pt) WCAG AAA ✓ Pass

Any Text WCAG AAA ✓ Pass

If you want to check with other color combinations, try the [Color Contrast Checker](#).

Hex BDABB1 Background



This preview shows how black text looks on a background with the Hex color BDABB1.



This preview shows how white text looks on a background with the Hex color BDABB1.

Color Blindness Simulation

Color vision deficiency is a very complex topic, and I could not describe the different causes any better than Wikipedia does, so if you want to learn more, you should check out their [article about color blindness](#).

Dichromacy



Original Color
BDABB1

Protanopia
B2AFB3

Deuteranopia
C0AAB1

Trichromacy



Original Color
BDABB1

Protanomaly
B6AEB2

Deuteranomaly
BFAAB1

Tritanomaly
BEAAB5

Monochromacy



Original Color
BDABB1

Achromatopsia
B1B1B1

Achromatomaly
B5AFB1

CSS Examples

Text

The CSS property to change the color of the text to Hex BDABB1 is called "color". The color property can be set on classes, ids or directly on the HTML element.

This example shows how text in the color #BDABB1 looks like.

```
.text, #text, p{  
    color:#BDABB1  
}
```

If you want to add a text shadow in that color use the text-shadow property, you can generate a text shadow directly with our [CSS Text Shadow Generator](#).

Here you see how black text with a 4 pixel #BDABB1 colored shadow looks like.

```
.shadow{ text-shadow: 4px 4px 2px #BDABB1  
}
```

Border

The CSS property to change the border of an element to Hex BDABB1 is called "border". The border property can be set on classes, ids or directly on the HTML element.

This example shows the color as border, it can be applied via the CSS property "border" or "border-color".

```
.border, #border, table{ border:4px solid  
#BDABB1 }
```

If only the border color should be changed use the property `border-color`.

```
.border{ border-color:#BDABB1 }
```

If you want to add a box shadow in that color use:

Here you see how a box with a 4 pixel #BDABB1 colored shadow looks like.

```
.boxshadow{ -moz-box-shadow:4px 4px 4px  
4px #BDABB1; -webkit-box-shadow:4px 4px  
4px 4px #BDABB1; box-shadow:4px 4px 4px  
4px #BDABB1 }
```

Background

The CSS property to change the background color of an element to Hex BDABB1 is called "background". The background property can be set on classes, ids or directly on the HTML element.

```
.background, #background, body{  
background:#BDABB1 }
```

If only the background color should be changed can be used:

```
.background{ background-color:#BDABB1 }
```

This example shows the color as background, it is applied via the CSS property "background".

To optimize and compress your CSS code, you can use our [online CSS compressor and optimizer](#) based on csstidy. If you want to create a linear or radial gradient as background or border, check our [CSS Gradient Generator](#).

Hey! You found this booklet interesting? Support Converting Colors with the new Membership Option!

The pro membership hides all ads, plus gives you double the colors in the color bucket, and more awesome pro features!

[Learn more, Memberships starting at \\$2.50/m!](#)

**Follow me
on Twitter!**

@ConvertingColor