

Converting Colors

Hex(BE7172)

Have a look what the booklet for
Hex(BE7172) contains.

Hex(BE7172)	3
<i>Conversions</i>	4
<i>Details</i>	6
<i>Harmonies</i>	11
<i>Previews</i>	23
<i>Color Blindness Simulation</i>	26
<i>CSS Examples</i>	29

Color

Hex(BE7172)

Conversions

Conversions Part 1

Format	Color
Hex	BE7172
RGB	190, 113, 114
RGB Percent	75%, 44%, 45%
CMY	0.2549, 0.5569, 0.5529
CMYK	0.00, 0.41, 0.40, 0.25
HSL	359°, 37%, 59%
HSV	359°, 41%, 75%
XYZ	30.1776, 23.9723, 18.9562
YIQ	136.1370, 45.5710, 16.6350

Conversions

Conversions Part 2

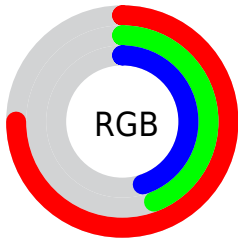
Format	Color
R_{YB}	190, 113, 114
Decimal	12480882
CIE _{Lab}	56.06, 30.50, 12.57
CIE _{LCh}	56, 32.986, 22.391
Yxy	23.9723, 0.4128, 0.3279
Android (android.graphics.Color)	4290670962 (0xFFBE7172)
YUV	136.1370, -10.9135, 47.2379
Hunter-Lab	48.9615, 24.3364, 11.3181

Details

The Hex color **BE7172** is a dark color, and the websafe version is hex **CC6666**. A complement of this color would be **71BEBD**, and the grayscale version is **888888**.

A 20% lighter version of the original color is **F8A6A6**, and **863F42** is the 20% darker color. If you saturate the color by 10%, you get **BE5E5F**, and if you desaturate by 10%, it is **BE8485**.

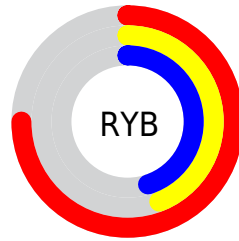
Distribution



Red (75%)

Green (44%)

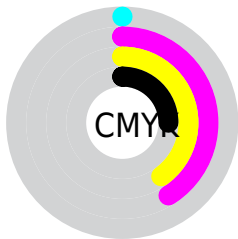
Blue (45%)



Red (75%)

Yellow (44%)

Blue (45%)

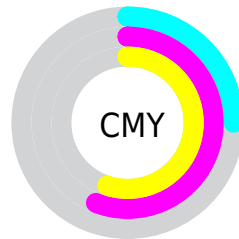


Cyan (0%)

Magenta (41%)

Yellow (40%)

Black (25%)



Cyan (25%)

Magenta (56%)

Yellow (55%)

Brightness & Saturation Gradients

These gradients show how the Hex color BE7172 changes by changing the brightness by 10 percent. The first figure shows a shift by +10% for each color and the second figure -10%.

Similar to the brightness gradients but the following saturation gradients show a change of the Hex color BE7172 by changing the saturation by 10% instead.

 BE7172

 BE7172

FFFFFF

 A2585A

 F8A6A6

 863F42

 FFC1C1

 6B272C

 FFDDDD

 500F18

 FFFAF9

 370000

 1B0001

 000000

 BE7172

 BE7172

 BE5E5F

 BE8485

 BE4B4C

 BE9798

 BE383A

 BEAAAA

 BE2527

 BEBDBD

 BE1214

 BED0D0

 BE0002

 BEE3E3

 BEF6F5

 BEFFFF

Harmonies

Analogous

The Analogous color harmony consists of three colors that are next to each other on the color wheel.



B9718F



BE7172



B4785A

Triad

The Triadic color harmony groups three colors that are evenly spaced from another and form a triangle on the color wheel.



BE7172



629262



4E8BBF

Complementary

The Complementary color scheme is a pair of colors which are on the opposite of each other on the color wheel.



BE7172



71BEBD

Split Complementary

Split-complementary colors differ from the complementary color scheme. The scheme consists of three colors, the original color and two neighbors of the complement color.



0F92B3



BE7172



3B957E

Square

The Square scheme is like the rectangle color scheme, but the four colors are evenly spaced on the color wheel.



BE7172



838B50



00959B



7F82BB

Rectangle

The Rectangle color scheme consists of four colors that form a rectangle on the color wheel.



BE7172



A87F50



00959B



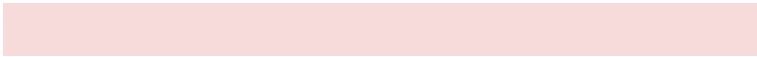
3C8EBC

Sweetspot

The Sweet Spot groups the original color and five complimentary colors.



BE7172



F7DADA



BD71BE



7D6B6C



FCFCFC



7D7D7D

Same Dimension

The Same Dimension uses a secret algorithm to generate beautiful new colors.



BE7172



F77E80



BE9671



5E5555



9E0002



1F0000

Inverse Universe

The Inverse Universe completely reimagines the original color for something new.



BE7172



F77E80



7199BE



5E5555



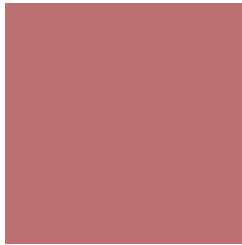
9E0002



1F0000

Previews

White Background



This preview shows how the Hex color BE7172 looks on a white background.

Color Contrast Check

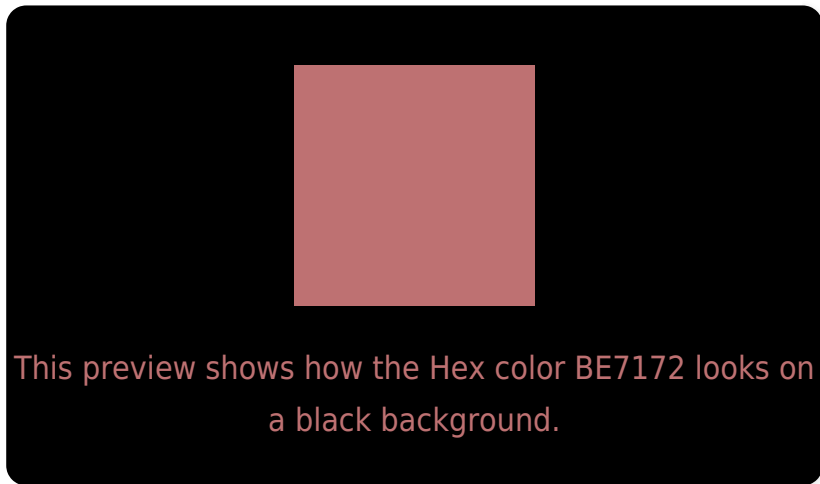
Large Text (above 18pt) WCAG AA ✓ Pass

Any Text WCAG AA × Fail

Large Text (above 18pt) WCAG AAA × Fail

Any Text WCAG AAA × Fail

Black Background



Color Contrast Check

Large Text (above 18pt) WCAG AA ✓ Pass

Any Text WCAG AA ✓ Pass

Large Text (above 18pt) WCAG AAA ✓ Pass

Any Text WCAG AAA × Fail

If you want to check with other color combinations, try the [Color Contrast Checker](#).

Hex BE7172 Background



This preview shows how black text looks on a background with the Hex color BE7172.



This preview shows how white text looks on a background with the Hex color BE7172.

Color Blindness Simulation

Color vision deficiency is a very complex topic, and I could not describe the different causes any better than Wikipedia does, so if you want to learn more, you should check out their [article about color blindness](#).

Dichromacy



Original Color
BE7172

Protanopia
8C867D

Deuteranopia
9C826F



Tritanopia
BF7078

Trichromacy



Original Color
BE7172

Protanomaly
9E7E79

Deuteranomaly
A87C70

Tritanomaly
BF7076

Monochromacy



Original Color
BE7172

Achromatopsia
888888

Achromatomaly
9C8080

CSS Examples

Text

The CSS property to change the color of the text to Hex BE7172 is called "color". The color property can be set on classes, ids or directly on the HTML element.

This example shows how text in the color #BE7172 looks like.

```
.text, #text, p{  
    color:#BE7172  
}
```

If you want to add a text shadow in that color use the text-shadow property, you can generate a text shadow directly with our [CSS Text Shadow Generator](#).

Here you see how black text with a 4 pixel #BE7172 colored shadow looks like.

```
.shadow{ text-shadow: 4px 4px 2px #BE7172
}
```

Border

The CSS property to change the border of an element to Hex BE7172 is called "border". The border property can be set on classes, ids or directly on the HTML element.

This example shows the color as border, it can be applied via the CSS property "border" or "border-color".

```
.border, #border, table{ border:4px solid
#BE7172 }
```

If only the border color should be changed use the property border-color.

```
.border{ border-color:#BE7172 }
```

If you want to add a box shadow in that color use:

Here you see how a box with a 4 pixel #BE7172 colored shadow looks like.

```
.boxshadow{ -moz-box-shadow:4px 4px 4px  
4px #BE7172; -webkit-box-shadow:4px 4px  
4px 4px #BE7172; box-shadow:4px 4px 4px  
4px #BE7172 }
```

Background

The CSS property to change the background color of an element to Hex BE7172 is called "background". The background property can be set on classes, ids or directly on the HTML element.

```
.background, #background, body{  
background:#BE7172 }
```

If only the background color should be changed can be used:

```
.background{ background-color:#BE7172 }
```

This example shows the color as background, it is applied via the CSS property "background".

To optimize and compress your CSS code, you can use our [online CSS compressor and optimizer](#) based on csstidy. If you want to create a linear or radial gradient as background or border, check our [CSS Gradient Generator](#).

Hey! You found this booklet interesting? Support Converting Colors with the new Membership Option!

The pro membership hides all ads, plus gives you double the colors in the color bucket, and more awesome pro features!

[Learn more, Memberships starting at \\$2.50/m!](#)

**Follow me
on Twitter!**

@ConvertingColor