

Converting Colors

Hex(BE7E53)

Have a look what the booklet for
Hex(BE7E53) contains.

Hex(BE7E53)	3
<i>Conversions</i>	4
<i>Details</i>	6
<i>Harmonies</i>	11
<i>Previews</i>	23
<i>Color Blindness Simulation</i>	26
<i>CSS Examples</i>	29

Color

Hex(BE7E53)

Conversions

Conversions Part 1

Format	Color
Hex	BE7E53
RGB	190, 126, 83
RGB Percent	75%, 49%, 33%
CMY	0.2549, 0.5059, 0.6745
CMYK	0.00, 0.34, 0.56, 0.25
HSL	24°, 45%, 54%
HSV	24°, 56%, 75%
XYZ	30.2574, 26.4934, 11.7026
YIQ	140.2340, 51.9470, 0.1950

Conversions

Conversions Part 2

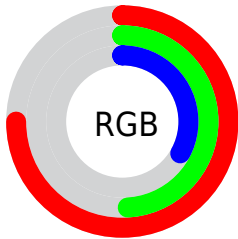
Format	Color
R_{YB}	190, 155, 83
Decimal	12484179
CIE Lab	58.50, 20.27, 33.36
CIE LCh	59, 39.038, 58.715
Yxy	26.4934, 0.4420, 0.3870
Android (android.graphics.Color)	4290674259 (0xFFBE7E53)
YUV	140.2340, -28.2164, 43.6448
Hunter-Lab	51.4717, 14.8548, 22.5500

Details

The Hex color **BE7E53** is a dark color, and the websafe version is hex **CC9966**. A complement of this color would be **5393BE**, and the grayscale version is **8C8C8C**.

A 20% lighter version of the original color is **F9B385**, and **854D24** is the 20% darker color. If you saturate the color by 10%, you get **BE7340**, and if you desaturate by 10%, it is **BE8966**.

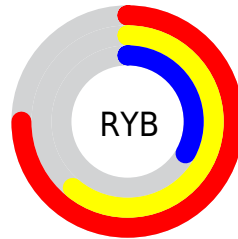
Distribution



Red (75%)

Green (49%)

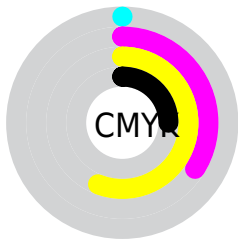
Blue (33%)



Red (75%)

Yellow (61%)

Blue (33%)

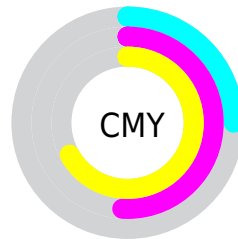


Cyan (0%)

Magenta (34%)

Yellow (56%)

Black (25%)



Cyan (25%)

Magenta (51%)

Yellow (67%)

Brightness & Saturation Gradients

These gradients show how the Hex color BE7E53 changes by changing the brightness by 10 percent. The first figure shows a shift by +10% for each color and the second figure -10%.

Similar to the brightness gradients but the following saturation gradients show a change of the Hex color BE7E53 by changing the saturation by 10% instead.

 BE7E53

 BE7E53

FFFFFF

 A1653B

 F9B385

 854D24

 FFCFA0

 6A350E

 FFE BBB

 4F1F00

 FFFFD7

 340A00

 FFFFF3

 1B0001

 000000

 BE7E53

 BE7E53

 BE7340

 BE8966

 BE672D

 BE9579

 BE5C1A

 BEA08C

 BE5107

 BEAB9F

 BE4C00

 BEB7B2

 BEC2C5

 BECED8

 BED9EB

 BEE4FE

Harmonies

Analogous

The Analogous color harmony consists of three colors that are next to each other on the color wheel.



CD746E



BE7E53



A38A47

Triad

The Triadic color harmony groups three colors that are evenly spaced from another and form a triangle on the color wheel.



BE7E53



109E8A



8D84C9

Complementary

The Complementary color scheme is a pair of colors which are on the opposite of each other on the color wheel.



BE7E53



5393BE

Split Complementary

Split-complementary colors differ from the complementary color scheme. The scheme consists of three colors, the original color and two neighbors of the complement color.



5191D1



BE7E53



009EAC

Square

The Square scheme is like the rectangle color scheme, but the four colors are evenly spaced on the color wheel.



BE7E53



569B68



0099C6



B678B1

Rectangle

The Rectangle color scheme consists of four colors that form a rectangle on the color wheel.



BE7E53



8D914A



0099C6



7C89CD

Sweetspot

The Sweet Spot groups the original color and five complimentary colors.



BE7E53



F7DECD



BE5393



7D6E64



FCFCFC



7D7D7D

Same Dimension

The Same Dimension uses a secret algorithm to generate beautiful new colors.



BE7E53



F7934F



BEB353



5E5955



9E4000



1F0C00

Inverse Universe

The Inverse Universe completely reimagines the original color for something new.



5393BE



4FB4F7



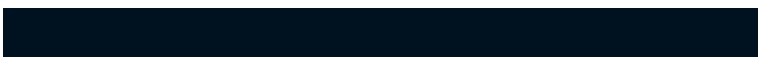
535EBE



555B5E



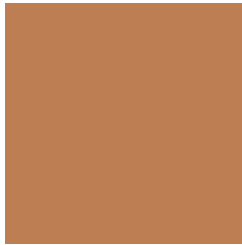
005F9E



00121F

Previews

White Background



This preview shows how the Hex color BE7E53 looks on a white background.

Color Contrast Check

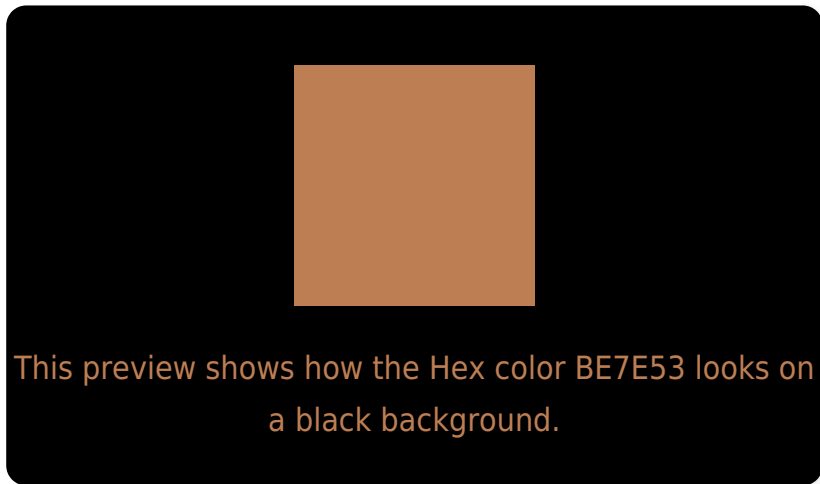
Large Text (above 18pt) WCAG AA ✓ Pass

Any Text WCAG AA × Fail

Large Text (above 18pt) WCAG AAA × Fail

Any Text WCAG AAA × Fail

Black Background



Color Contrast Check

Large Text (above 18pt) WCAG AA ✓ Pass

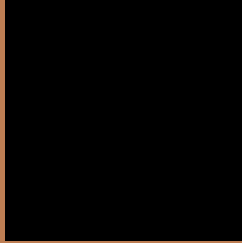
Any Text WCAG AA ✓ Pass

Large Text (above 18pt) WCAG AAA ✓ Pass

Any Text WCAG AAA × Fail

If you want to check with other color combinations, try the [Color Contrast Checker](#).

Hex BE7E53 Background



This preview shows how black text looks on a background with the Hex color BE7E53.



This preview shows how white text looks on a background with the Hex color BE7E53.

Color Blindness Simulation

Color vision deficiency is a very complex topic, and I could not describe the different causes any better than Wikipedia does, so if you want to learn more, you should check out their [article about color blindness](#).

Dichromacy



Original Color
BE7E53

Protanopia
9A8D59

Deuteranopia
AC8751



Tritanopia
C17881

Trichromacy



Original Color
BE7E53

Protanomaly
A78857

Deuteranomaly
B38452

Tritanomaly
C07A70

Monochromacy



Original Color
BE7E53

Achromatopsia
8C8C8C

Achromatomaly
9E8777

CSS Examples

Text

The CSS property to change the color of the text to Hex BE7E53 is called "color". The color property can be set on classes, ids or directly on the HTML element.

This example shows how text in the color #BE7E53 looks like.

```
.text, #text, p{  
    color:#BE7E53  
}
```

If you want to add a text shadow in that color use the text-shadow property, you can generate a text shadow directly with our [CSS Text Shadow Generator](#).

Here you see how black text with a 4 pixel #BE7E53 colored shadow looks like.

```
.shadow{ text-shadow: 4px 4px 2px #BE7E53
}
```

Border

The CSS property to change the border of an element to Hex BE7E53 is called "border". The border property can be set on classes, ids or directly on the HTML element.

This example shows the color as border, it can be applied via the CSS property "border" or "border-color".

```
.border, #border, table{ border:4px solid
#BE7E53 }
```

If only the border color should be changed use the property `border-color`.

```
.border{ border-color:#BE7E53 }
```

If you want to add a box shadow in that color use:

Here you see how a box with a 4 pixel #BE7E53 colored shadow looks like.

```
.boxshadow{ -moz-box-shadow:4px 4px 4px  
4px #BE7E53; -webkit-box-shadow:4px 4px  
4px 4px #BE7E53; box-shadow:4px 4px 4px  
4px #BE7E53 }
```

Background

The CSS property to change the background color of an element to Hex BE7E53 is called "background". The background property can be set on classes, ids or directly on the HTML element.

```
.background, #background, body{  
background:#BE7E53 }
```

If only the background color should be changed can be used:

```
.background{ background-color:#BE7E53 }
```

This example shows the color as background, it is applied via the CSS property "background".

To optimize and compress your CSS code, you can use our [online CSS compressor and optimizer](#) based on csstidy. If you want to create a linear or radial gradient as background or border, check our [CSS Gradient Generator](#).

Hey! You found this booklet interesting? Support Converting Colors with the new Membership Option!

The pro membership hides all ads, plus gives you double the colors in the color bucket, and more awesome pro features!

[Learn more, Memberships starting at \\$2.50/m!](#)

**Follow me
on Twitter!**

@ConvertingColor