

# Converting Colors

Hex(BE976D)

Have a look what the booklet for  
Hex(BE976D) contains.

<b>Hex(BE976D)</b> .....	3
<i><b>Conversions</b></i> .....	4
<i><b>Details</b></i> .....	6
<i><b>Harmonies</b></i> .....	11
<i><b>Previews</b></i> .....	23
<i><b>Color Blindness Simulation</b></i> .....	26
<i><b>CSS Examples</b></i> .....	29

**Color**

**Hex(BE976D)**

# Conversions

## Conversions Part 1

<b>Format</b>	<b>Color</b>
Hex	BE976D
RGB	190, 151, 109
RGB Percent	75%, 59%, 43%
CMY	0.2549, 0.4078, 0.5725
CMYK	0.00, 0.21, 0.43, 0.25
HSL	31°, 38%, 59%
HSV	31°, 43%, 75%
XYZ	35.0621, 34.1845, 19.2183
YIQ	157.8730, 36.7260, -4.7940

# Conversions

## Conversions Part 2

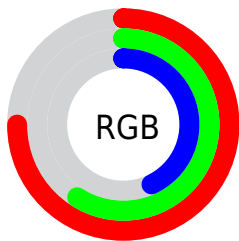
<b>Format</b>	<b>Color</b>
<b>RYB</b>	184, 190, 109
Decimal	12490605
CIELab	65.11, 8.99, 27.65
CIElCh	65, 29.078, 71.996
Yxy	34.1845, 0.3963, 0.3864
Android (android.graphics.Color)	4290680685 (0xFFBE976D)
YUV	157.8730, -24.0944, 28.1754
Hunter-Lab	58.4675, 4.7258, 21.4386

# Details

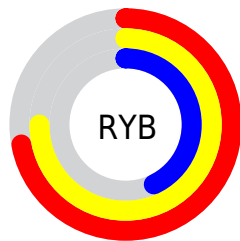
The Hex color **BE976D** is a dark color, and the websafe version is hex **CC9966**. A complement of this color would be **6D94BE**, and the grayscale version is **9E9E9E**.

A 20% lighter version of the original color is **F8CDA1**, and **87643D** is the 20% darker color. If you saturate the color by 10%, you get **BE8E5A**, and if you desaturate by 10%, it is **BEA080**.

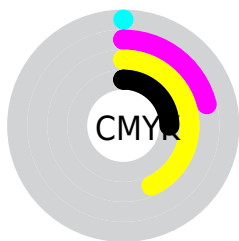
# Distribution



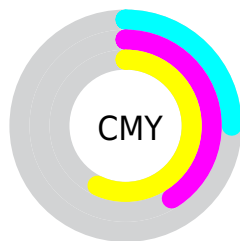
- Red (75%)
- Green (59%)
- Blue (43%)



- Red (72%)
- Yellow (75%)
- Blue (43%)



- Cyan (0%)
- Magenta (21%)
- Yellow (43%)
- Black (25%)



- Cyan (25%)
- Magenta (41%)
- Yellow (57%)

# Brightness & Saturation Gradients

These gradients show how the Hex color BE976D changes by changing the brightness by 10 percent. The first figure shows a shift by +10% for each color and the second figure -10%.

Similar to the brightness gradients but the following saturation gradients show a change of the Hex color BE976D by changing the saturation by 10% instead.



 BE976D

 BE976D

FFFFFF

 A27D54

 F8CDA1

 87643D

 FFE9BC

 6C4C26

 FFFFD8

 523610

 FFFFF5

 3A2000

 220B00

 000000

 BE976D

 BE976D

 BE8E5A

 BEA080

 BE8547

 BEA993

 BE7C34

 BEB2A6

 BE7221

 BEBCB9

 BE690E

 BEC5CC

 BE6300

 BECEDF

 BED7F2

 BEE0FF

 BEE9FF

# Harmonies

## Analogous

The Analogous color harmony consists of three colors that are next to each other on the color wheel.



CE8F7C



BE976D



A6A06B

# Triad

The Triadic color harmony groups three colors that are evenly spaced from another and form a triangle on the color wheel.



BE976D



50ACA8



AF94C5

# Complementary

The Complementary color scheme is a pair of colors which are on the opposite of each other on the color wheel.



BE976D



6D94BE

# Split Complementary

Split-complementary colors differ from the complementary color scheme. The scheme consists of three colors, the original color and two neighbors of the complement color.



8B9DD1



BE976D



4BAAC0

# Square

The Square scheme is like the rectangle color scheme, but the four colors are evenly spaced on the color wheel.



BE976D



6AAB8D



65A5CF



C78CAF

# Rectangle

The Rectangle color scheme consists of four colors that form a rectangle on the color wheel.



BE976D



93A571



65A5CF



A497CA

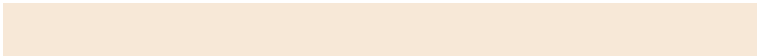


# Sweetspot

The Sweet Spot groups the original color and five complimentary colors.



BE976D



F7E8D7



BE6D94



7D7369



FCFCFC



7D7D7D



# Same Dimension

The Same Dimension uses a secret algorithm to generate beautiful new colors.



BE976D



F7BB79



BDBE6D



5E5A55



9E5200



1F1000

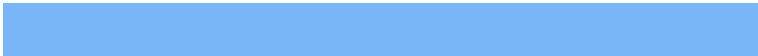


# Inverse Universe

The Inverse Universe completely reimagines the original color for something new.



6D94BE



79B6F7



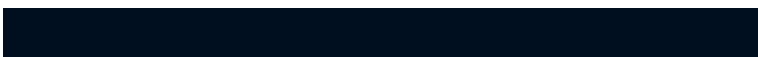
6E6DBE



55595E



004C9E

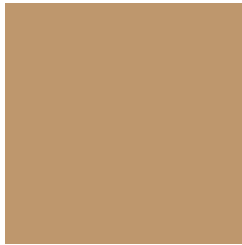


000F1F



# Previews

## White Background



This preview shows how the Hex color BE976D looks on a white background.

## Color Contrast Check

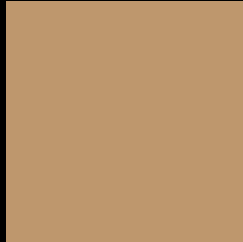
Large Text (above 18pt) WCAG AA × Fail

Any Text WCAG AA × Fail

Large Text (above 18pt) WCAG AAA × Fail

Any Text WCAG AAA × Fail

# Black Background



This preview shows how the Hex color BE976D looks on a black background.

## Color Contrast Check

Large Text (above 18pt) WCAG AA ✓ Pass

Any Text WCAG AA ✓ Pass

Large Text (above 18pt) WCAG AAA ✓ Pass

Any Text WCAG AAA ✓ Pass

If you want to check with other color combinations, try the [Color Contrast Checker](#).



## Hex BE976D Background



This preview shows how black text looks on a background with the Hex color BE976D.




This preview shows how white text looks on a background with the Hex color BE976D.

# Color Blindness Simulation

Color vision deficiency is a very complex topic, and I could not describe the different causes any better than Wikipedia does, so if you want to learn more, you should check out their [article about color blindness](#).

## Dichromacy





**Tritanopia**  
C3919C

# Trichromacy



**Original Color**  
BE976D

**Protanomaly**  
B29B6F

**Deuteranomaly**  
BD976D

**Tritanomaly**  
C1938B

# Monochromacy



**Original Color**  
BE976D

**Achromatopsia**  
9E9E9E

**Achromatomaly**  
AA9B8C

# CSS Examples

## Text

The CSS property to change the color of the text to Hex BE976D is called "color". The color property can be set on classes, ids or directly on the HTML element.

This example shows how text in the color #BE976D looks like.

```
.text, #text, p{  
    color:#BE976D  
}
```

If you want to add a text shadow in that color use the text-shadow property, you can generate a text shadow directly with our [CSS Text Shadow Generator](#).

Here you see how black text with a 4 pixel #BE976D colored shadow looks like.

```
.shadow{ text-shadow: 4px 4px 2px #BE976D
}
```

## Border

The CSS property to change the border of an element to Hex BE976D is called "border". The border property can be set on classes, ids or directly on the HTML element.

This example shows the color as border, it can be applied via the CSS property "border" or "border-color".

```
.border, #border, table{ border:4px solid
#BE976D }
```

If only the border color should be changed use the property `border-color`.

```
.border{ border-color:#BE976D }
```

If you want to add a box shadow in that color use:

Here you see how a box with a 4 pixel #BE976D colored shadow looks like.

```
.boxshadow{ -moz-box-shadow:4px 4px 4px  
4px #BE976D; -webkit-box-shadow:4px 4px  
4px 4px #BE976D; box-shadow:4px 4px 4px  
4px #BE976D }
```

# Background

The CSS property to change the background color of an element to Hex BE976D is called "background". The background property can be set on classes, ids or directly on the HTML element.

```
.background, #background, body{  
background:#BE976D }
```

If only the background color should be changed can be used:

```
.background{ background-color:#BE976D }
```

This example shows the color as background, it is applied via the CSS property "background".

To optimize and compress your CSS code, you can use our [online CSS compressor and optimizer](#) based on csstidy. If you want to create a linear or radial gradient as background or border, check our [CSS Gradient Generator](#).



Hey! You found this booklet interesting? Support Converting Colors with the new Membership Option!

The pro membership hides all ads, plus gives you double the colors in the color bucket, and more awesome pro features!

**[Learn more, Memberships starting at \\$2.50/m!](#)**

**Follow me  
on Twitter!**

@ConvertingColor