

Converting Colors

Hex(BE986C)

Have a look what the booklet for
Hex(BE986C) contains.

Hex(BE986C)	3
<i>Conversions</i>	4
<i>Details</i>	6
<i>Harmonies</i>	11
<i>Previews</i>	23
<i>Color Blindness Simulation</i>	26
<i>CSS Examples</i>	29

Color

Hex(BE986C)

Conversions

Conversions Part 1

Format	Color
Hex	BE986C
RGB	190, 152, 108
RGB Percent	75%, 60%, 42%
CMY	0.2549, 0.4039, 0.5765
CMYK	0.00, 0.20, 0.43, 0.25
HSL	32°, 39%, 58%
HSV	32°, 43%, 75%
XYZ	35.1702, 34.4863, 18.9902
YIQ	158.3460, 36.7720, -5.6280

Conversions

Conversions Part 2

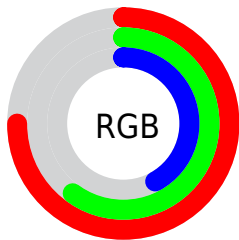
Format	Color
RYB	179, 190, 108
Decimal	12490860
CIELab	65.35, 8.33, 28.51
CIElCh	65, 29.702, 73.713
Yxy	34.4863, 0.3967, 0.3890
Android (android.graphics.Color)	4290680940 (0xFFBE986C)
YUV	158.3460, -24.8206, 27.7606
Hunter-Lab	58.7251, 4.1341, 21.9346

Details

The Hex color **BE986C** is a dark color, and the websafe version is hex **CC9966**. A complement of this color would be **6C92BE**, and the grayscale version is **9F9F9F**.

A 20% lighter version of the original color is **F8CEA0**, and **87653C** is the 20% darker color. If you saturate the color by 10%, you get **BE8F59**, and if you desaturate by 10%, it is **BEA17F**.

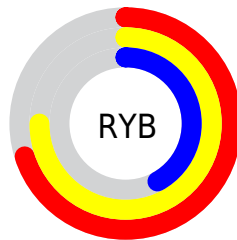
Distribution



Red (75%)

Green (60%)

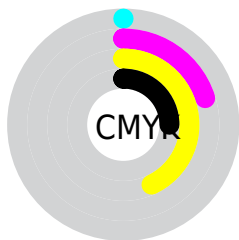
Blue (42%)



Red (70%)

Yellow (75%)

Blue (42%)

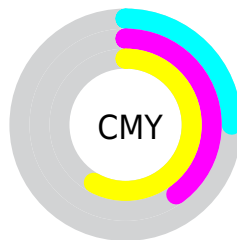


Cyan (0%)

Magenta (20%)

Yellow (43%)

Black (25%)



Cyan (25%)

Magenta (40%)

Yellow (58%)

Brightness & Saturation Gradients

These gradients show how the Hex color BE986C changes by changing the brightness by 10 percent. The first figure shows a shift by +10% for each color and the second figure -10%.

Similar to the brightness gradients but the following saturation gradients show a change of the Hex color BE986C by changing the saturation by 10% instead.

 BE986C

 BE986C

FFFFFF

 A27E53

 F8CEA0

 87653C

 FFEABB

 6C4D25

 FFFFD7

 52370F

 FFFFF3

 3A2100

 220C00

 000000

 BE986C

 BE986C

 BE8F59

 BEA17F

 BE8646

 BEAA92

 BE7E33

 BEB2A5

 BE7520

 BEBBB8

 BE6C0D

 BEC4CB

 BE6600

 BECDDE

 BED6F1

 BEDEFF

 BEE7FF

Harmonies

Analogous

The Analogous color harmony consists of three colors that are next to each other on the color wheel.



CF907B



BE986C



A5A16B

Triad

The Triadic color harmony groups three colors that are evenly spaced from another and form a triangle on the color wheel.



BE986C



4DADAA



B294C5

Complementary

The Complementary color scheme is a pair of colors which are on the opposite of each other on the color wheel.



BE986C



6C92BE

Split Complementary

Split-complementary colors differ from the complementary color scheme. The scheme consists of three colors, the original color and two neighbors of the complement color.



8E9DD2



BE986C



49ABC3

Square

The Square scheme is like the rectangle color scheme, but the four colors are evenly spaced on the color wheel.



BE986C



68AC8F



66A5D1



CA8CAE

Rectangle

The Rectangle color scheme consists of four colors that form a rectangle on the color wheel.



BE986C



91A672



66A5D1



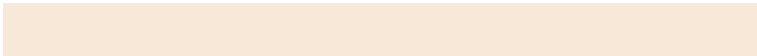
A797CB

Sweetspot

The Sweet Spot groups the original color and five complimentary colors.



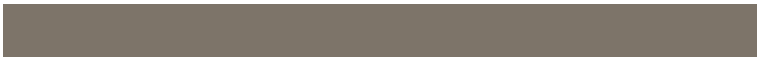
BE986C



F7E8D7



BE6C92



7D7469



FCFCFC



7D7D7D

Same Dimension

The Same Dimension uses a secret algorithm to generate beautiful new colors.



BE986C



F7BC77



BBBE6C



5E5A55



9E5500



1F1000

Inverse Universe

The Inverse Universe completely reimagines the original color for something new.



6C92BE



77B2F7



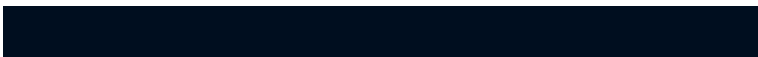
6F6CBE



55595E



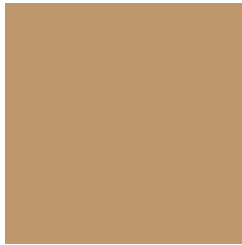
00499E



000E1F

Previews

White Background



This preview shows how the Hex color BE986C looks on a white background.

Color Contrast Check

Large Text (above 18pt) WCAG AA × Fail

Any Text WCAG AA × Fail

Large Text (above 18pt) WCAG AAA × Fail

Any Text WCAG AAA × Fail

Black Background



Color Contrast Check

Large Text (above 18pt) WCAG AA ✓ Pass

Any Text WCAG AA ✓ Pass

Large Text (above 18pt) WCAG AAA ✓ Pass

Any Text WCAG AAA ✓ Pass

If you want to check with other color combinations, try the [Color Contrast Checker](#).

Hex BE986C Background



This preview shows how black text looks on a background with the Hex color BE986C.




This preview shows how white text looks on a background with the Hex color BE986C.

Color Blindness Simulation

Color vision deficiency is a very complex topic, and I could not describe the different causes any better than Wikipedia does, so if you want to learn more, you should check out their [article about color blindness](#).

Dichromacy





Tritanopia
C3929D

Trichromacy



Monochromacy



CSS Examples

Text

The CSS property to change the color of the text to Hex BE986C is called "color". The color property can be set on classes, ids or directly on the HTML element.

This example shows how text in the color #BE986C looks like.

```
.text, #text, p{  
    color:#BE986C  
}
```

If you want to add a text shadow in that color use the text-shadow property, you can generate a text shadow directly with our [CSS Text Shadow Generator](#).

Here you see how black text with a 4 pixel #BE986C colored shadow looks like.

```
.shadow{ text-shadow: 4px 4px 2px #BE986C
}
```

Border

The CSS property to change the border of an element to Hex BE986C is called "border". The border property can be set on classes, ids or directly on the HTML element.

This example shows the color as border, it can be applied via the CSS property "border" or "border-color".

```
.border, #border, table{ border:4px solid
#BE986C }
```

If only the border color should be changed use the property `border-color`.

```
.border{ border-color:#BE986C }
```

If you want to add a box shadow in that color use:

Here you see how a box with a 4 pixel #BE986C colored shadow looks like.

```
.boxshadow{ -moz-box-shadow:4px 4px 4px  
4px #BE986C; -webkit-box-shadow:4px 4px  
4px 4px #BE986C; box-shadow:4px 4px 4px  
4px #BE986C }
```

Background

The CSS property to change the background color of an element to Hex BE986C is called "background". The background property can be set on classes, ids or directly on the HTML element.

```
.background, #background, body{  
background:#BE986C }
```

If only the background color should be changed can be used:

```
.background{ background-color:#BE986C }
```

This example shows the color as background, it is applied via the CSS property "background".

To optimize and compress your CSS code, you can use our [online CSS compressor and optimizer](#) based on csstidy. If you want to create a linear or radial gradient as background or border, check our [CSS Gradient Generator](#).

Hey! You found this booklet interesting? Support Converting Colors with the new Membership Option!

The pro membership hides all ads, plus gives you double the colors in the color bucket, and more awesome pro features!

[Learn more, Memberships starting at \\$2.50/m!](#)

**Follow me
on Twitter!**

@ConvertingColor