

# Converting Colors

Hex(BE999E)

Have a look what the booklet for  
Hex(BE999E) contains.

<b>Hex(BE999E)</b> .....	3
<i><b>Conversions</b></i> .....	4
<i><b>Details</b></i> .....	6
<i><b>Harmonies</b></i> .....	11
<i><b>Previews</b></i> .....	23
<i><b>Color Blindness Simulation</b></i> .....	26
<i><b>CSS Examples</b></i> .....	29

# **Color**

**Hex(BE999E)**

# Conversions

## Conversions Part 1

Format	Color
Hex	BE999E
RGB	190, 153, 158
RGB Percent	75%, 60%, 62%
CMY	0.2549, 0.4000, 0.3804
CMYK	0.00, 0.19, 0.17, 0.25
HSL	352°, 22%, 67%
HSV	352°, 19%, 75%
XYZ	38.7980, 36.1982, 37.2898
YIQ	164.6330, 20.4470, 9.3990

# Conversions

## Conversions Part 2

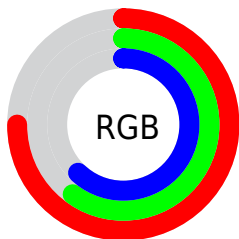
Format	Color
<a href="#">RYB</a>	<a href="#">190, 153, 158</a>
Decimal	<a href="#">12491166</a>
CIELab	<a href="#">66.67, 14.56, 2.61</a>
CIELCh	<a href="#">67, 14.794, 10.153</a>
Yxy	<a href="#">36.1982, 0.3455, 0.3224</a>
Android (android.graphics.Color)	<a href="#">4290681246</a> ( <a href="#">0xFFBE999E</a> )
YUV	<a href="#">164.6330, -3.2701, 22.2469</a>
Hunter-Lab	<a href="#">60.1650, 9.8188, 5.3679</a>

# Details

The Hex color **BE999E** is a light color, and the websafe version is hex **CC9999**. A complement of this color would be **99BEB9**, and the grayscale version is **A5A5A5**.

A 20% lighter version of the original color is **F7CFD5**, and **88666B** is the 20% darker color. If you saturate the color by 10%, you get **BE868E**, and if you desaturate by 10%, it is **BEACAE**.

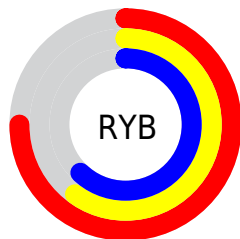
# Distribution



Red (75%)

Green (60%)

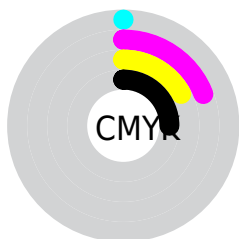
Blue (62%)



Red (75%)

Yellow (60%)

Blue (62%)

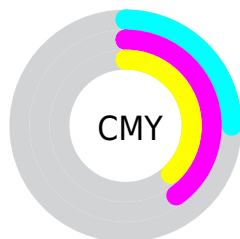


Cyan (0%)

Magenta (19%)

Yellow (17%)

Black (25%)



Cyan (25%)

Magenta (40%)

Yellow (38%)

# Brightness & Saturation Gradients

These gradients show how the Hex color BE999E changes by changing the brightness by 10 percent. The first figure shows a shift by +10% for each color and the second figure -10%.

Similar to the brightness gradients but the following saturation gradients show a change of the Hex color BE999E by changing the saturation by 10% instead.



 BE999E

 BE999E

FFFFFF

 A37F84

 F7CFD5

 88666B

 FFECF1

 6E4E53

 55373C

 3E2126

 270C11

 010000

 000000

 BE999E

 BE999E

 BE868E

 BEACAE

 BE737D

 BEBFBF

 BE606D

 BED2CF

 BE4D5C

 BEE5E0

 BE3A4C

 BEF8F0

 BE273B

 BEFFFF

 BE142B

 BE011B

 BE001A

# Harmonies

## Analogous

The Analogous color harmony consists of three colors that are next to each other on the color wheel.



B79AAB



BE999E



BD9B92

# Triad

The Triadic color harmony groups three colors that are evenly spaced from another and form a triangle on the color wheel.



BE999E



99A78E



89A6BB

# Complementary

The Complementary color scheme is a pair of colors which are on the opposite of each other on the color wheel.



BE999E



99BEB9

# Split Complementary

Split-complementary colors differ from the complementary color scheme. The scheme consists of three colors, the original color and two neighbors of the complement color.



80A9B3



BE999E



8BA999

# Square

The Square scheme is like the rectangle color scheme, but the four colors are evenly spaced on the color wheel.



BE999E



A8A388



81AAA6



99A2BC

# Rectangle

The Rectangle color scheme consists of four colors that form a rectangle on the color wheel.



BE999E



B89D8C



81AAA6



85A7B9

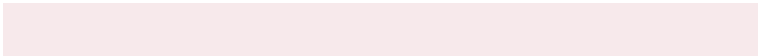


# Sweetspot

The Sweet Spot groups the original color and five complimentary colors.



BE999E



F7E9EB



B899BE



7D7475



FCFCFC



7D7D7D



# Same Dimension

The Same Dimension uses a secret algorithm to generate beautiful new colors.



BE999E



F7BEC6



BEA699



5E5556



9E0015



1F0004



# Inverse Universe

The Inverse Universe completely reimagines the original color for something new.



BE999E



F7BEC6



99B1BE



5E5556



9E0015

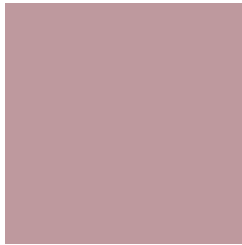


1F0004



# Previews

## White Background



This preview shows how the Hex color BE999E looks on a white background.

## Color Contrast Check

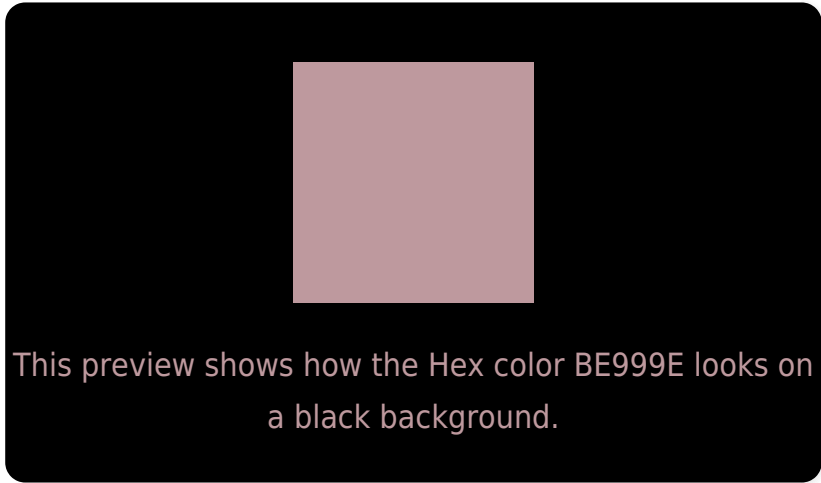
Large Text (above 18pt) WCAG AA × Fail

Any Text WCAG AA × Fail

Large Text (above 18pt) WCAG AAA × Fail

Any Text WCAG AAA × Fail

# Black Background



## Color Contrast Check

Large Text (above 18pt) WCAG AA ✓ Pass

Any Text WCAG AA ✓ Pass

Large Text (above 18pt) WCAG AAA ✓ Pass

Any Text WCAG AAA ✓ Pass

If you want to check with other color combinations, try the [Color Contrast Checker](#).



## Hex BE999E Background



This preview shows how black text looks on a background with the Hex color BE999E.

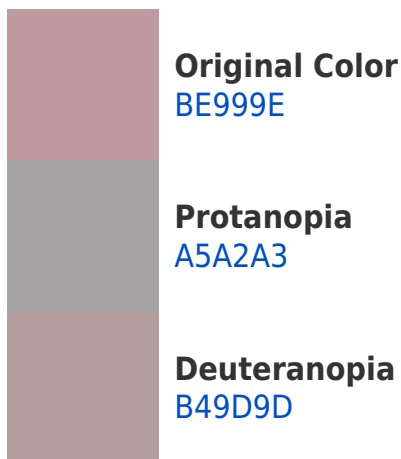


This preview shows how white text looks on a background with the Hex color BE999E.

# Color Blindness Simulation

Color vision deficiency is a very complex topic, and I could not describe the different causes any better than Wikipedia does, so if you want to learn more, you should check out their [article about color blindness](#).

## Dichromacy





**Tritanopia**  
BF98A4

# Trichromacy



**Original Color**  
BE999E

**Protanomaly**  
AE9FA1

**Deuteranomaly**  
B89C9D

**Tritanomaly**  
BF98A2

# Monochromacy



**Original Color**  
BE999E

**Achromatopsia**  
A5A5A5

**Achromatomaly**  
AEA1A2

# CSS Examples

## Text

The CSS property to change the color of the text to Hex BE999E is called "color". The color property can be set on classes, ids or directly on the HTML element.

This example shows how text in the color #BE999E looks like.

```
.text, #text, p{  
    color:#BE999E  
}
```

If you want to add a text shadow in that color use the text-shadow property, you can generate a text shadow directly with our [CSS Text Shadow Generator](#).

Here you see how black text with a 4 pixel #BE999E colored shadow looks like.

```
.shadow{ text-shadow: 4px 4px 2px #BE999E
}
```

## Border

The CSS property to change the border of an element to Hex BE999E is called "border". The border property can be set on classes, ids or directly on the HTML element.

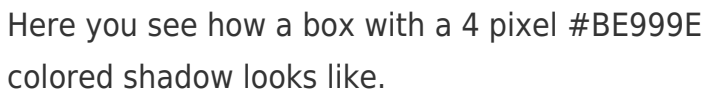
This example shows the color as border, it can be applied via the CSS property "border" or "border-color".

```
.border, #border, table{ border:4px solid
#BE999E }
```

If only the border color should be changed use the property `border-color`.

```
.border{ border-color:#BE999E }
```

If you want to add a box shadow in that color use:



Here you see how a box with a 4 pixel #BE999E colored shadow looks like.

```
.boxshadow{ -moz-box-shadow:4px 4px 4px  
4px #BE999E; -webkit-box-shadow:4px 4px  
4px 4px #BE999E; box-shadow:4px 4px 4px  
4px #BE999E }
```

# Background

The CSS property to change the background color of an element to Hex BE999E is called "background". The background property can be set on classes, ids or directly on the HTML element.

```
.background, #background, body{  
background:#BE999E }
```

If only the background color should be changed can be used:

```
.background{ background-color:#BE999E }
```

This example shows the color as background, it is applied via the CSS property "background".

To optimize and compress your CSS code, you can use our [online CSS compressor and optimizer](#) based on csstidy. If you want to create a linear or radial gradient as background or border, check our [CSS Gradient Generator](#).



Hey! You found this booklet interesting? Support Converting Colors with the new Membership Option!

The pro membership hides all ads, plus gives you double the colors in the color bucket, and more awesome pro features!

**[Learn more, Memberships starting at \\$2.50/m!](#)**

**Follow me  
on Twitter!**

@ConvertingColor