

Converting Colors

Hex(BE9B7A)

Have a look what the booklet for
Hex(BE9B7A) contains.

Hex(BE9B7A)	3
<i>Conversions</i>	4
<i>Details</i>	6
<i>Harmonies</i>	11
<i>Previews</i>	23
<i>Color Blindness Simulation</i>	26
<i>CSS Examples</i>	29

Color

Hex(BE9B7A)

Conversions

Conversions Part 1

Format	Color
Hex	BE9B7A
RGB	190, 155, 122
RGB Percent	75%, 61%, 48%
CMY	0.2549, 0.3922, 0.5216
CMYK	0.00, 0.18, 0.36, 0.25
HSL	29°, 34%, 61%
HSV	29°, 36%, 75%
XYZ	36.4694, 35.7950, 23.3993
YIQ	161.7030, 31.4530, -2.8430

Conversions

Conversions Part 2

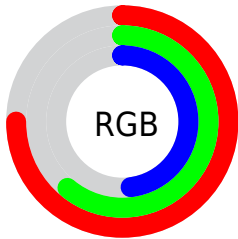
Format	Color
RYB	190, 186, 122
Decimal	12491642
CIELab	66.36, 8.32, 22.21
CIELCh	66, 23.715, 69.471
Yxy	35.7950, 0.3812, 0.3742
Android (android.graphics.Color)	4290681722 (0xFFBE9B7A)
YUV	161.7030, -19.5736, 24.8165
Hunter-Lab	59.8289, 4.1062, 18.6917

Details

The Hex color **BE9B7A** is a light color, and the websafe version is hex **CC9966**. A complement of this color would be **7A9DBE**, and the grayscale version is **A2A2A2**.

A 20% lighter version of the original color is **F7D1AF**, and **876849** is the 20% darker color. If you saturate the color by 10%, you get **BE9167**, and if you desaturate by 10%, it is **BEA58D**.

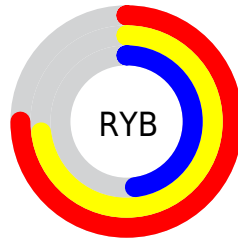
Distribution



Red (75%)

Green (61%)

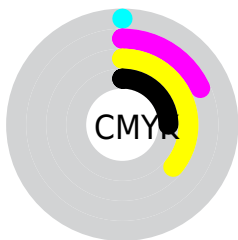
Blue (48%)



Red (75%)

Yellow (73%)

Blue (48%)

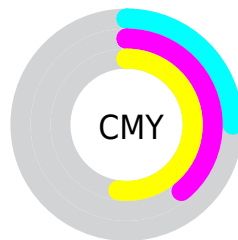


Cyan (0%)

Magenta (18%)

Yellow (36%)

Black (25%)



Cyan (25%)

Magenta (39%)

Yellow (52%)

Brightness & Saturation Gradients

These gradients show how the Hex color BE9B7A changes by changing the brightness by 10 percent. The first figure shows a shift by +10% for each color and the second figure -10%.

Similar to the brightness gradients but the following saturation gradients show a change of the Hex color BE9B7A by changing the saturation by 10% instead.

 BE9B7A

 BE9B7A

FFFFFF

 A28161

 F7D1AF

 876849

 FFEECA

 6D5032

 FFFFE6

 54391C

 3B2305

 240F00

 000000

 BE9B7A

 BE9B7A

 BE9167

 BEA58D

 BE8754

 BEAFA0

 BE7E41

 BEB8B3

 BE742E

 BEC2C6

 BE6A1B

 BECCD9

 BE6008

 BED6EC

 BE5C00

 BEDFFF

 BEE9FF

 BEF3FF

Harmonies

Analogous

The Analogous color harmony consists of three colors that are next to each other on the color wheel.



CA9587



BE9B7A



AAA277

Triad

The Triadic color harmony groups three colors that are evenly spaced from another and form a triangle on the color wheel.



BE9B7A



68ADA8



AD9AC2

Complementary

The Complementary color scheme is a pair of colors which are on the opposite of each other on the color wheel.



BE9B7A



7A9DBE

Split Complementary

Split-complementary colors differ from the complementary color scheme. The scheme consists of three colors, the original color and two neighbors of the complement color.



91A1CB



BE9B7A



64ACBC

Square

The Square scheme is like the rectangle color scheme, but the four colors are evenly spaced on the color wheel.



BE9B7A



7AAC92



74A8C9



C294B1

Rectangle

The Rectangle color scheme consists of four colors that form a rectangle on the color wheel.



BE9B7A



9BA67C



74A8C9



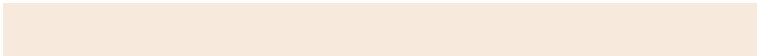
A49CC6

Sweetspot

The Sweet Spot groups the original color and five complimentary colors.



BE9B7A



F7E9DC



BE7A9D



7D756D



FCFCFC



7D7D7D

Same Dimension

The Same Dimension uses a secret algorithm to generate beautiful new colors.



BE9B7A



F7C18D



BEBD7A



5E5955



9E4D00



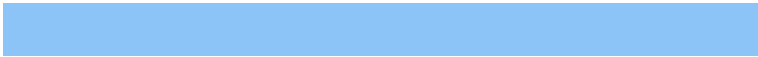
1F0F00

Inverse Universe

The Inverse Universe completely reimagines the original color for something new.



7A9DBE



8DC4F7



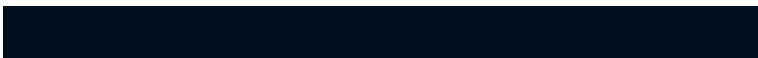
7A7BBE



555A5E



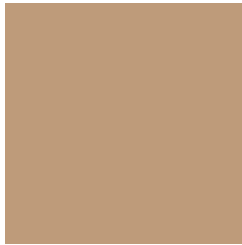
00519E



00101F

Previews

White Background



This preview shows how the Hex color BE9B7A looks on a white background.

Color Contrast Check

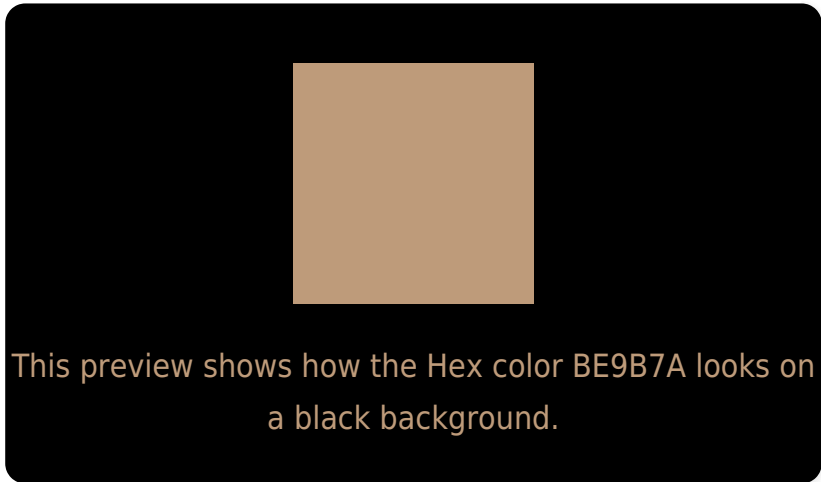
Large Text (above 18pt) WCAG AA × Fail

Any Text WCAG AA × Fail

Large Text (above 18pt) WCAG AAA × Fail

Any Text WCAG AAA × Fail

Black Background



Color Contrast Check

Large Text (above 18pt) WCAG AA ✓ Pass

Any Text WCAG AA ✓ Pass

Large Text (above 18pt) WCAG AAA ✓ Pass

Any Text WCAG AAA ✓ Pass

If you want to check with other color combinations, try the [Color Contrast Checker](#).

Hex BE9B7A Background



This preview shows how black text looks on a background with the Hex color BE9B7A.



This preview shows how white text looks on a background with the Hex color BE9B7A.

Color Blindness Simulation

Color vision deficiency is a very complex topic, and I could not describe the different causes any better than Wikipedia does, so if you want to learn more, you should check out their [article about color blindness](#).

Dichromacy



Original Color
BE9B7A

Protanopia
ACA17D

Deuteranopia
BE9B7A



Tritanopia
C296A1

Trichromacy



Monochromacy



CSS Examples

Text

The CSS property to change the color of the text to Hex BE9B7A is called "color". The color property can be set on classes, ids or directly on the HTML element.

This example shows how text in the color #BE9B7A looks like.

```
.text, #text, p{  
    color:#BE9B7A  
}
```

If you want to add a text shadow in that color use the text-shadow property, you can generate a text shadow directly with our [CSS Text Shadow Generator](#).

Here you see how black text with a 4 pixel #BE9B7A colored shadow looks like.

```
.shadow{ text-shadow: 4px 4px 2px #BE9B7A
}
```

Border

The CSS property to change the border of an element to Hex BE9B7A is called "border". The border property can be set on classes, ids or directly on the HTML element.

This example shows the color as border, it can be applied via the CSS property "border" or "border-color".

```
.border, #border, table{ border:4px solid
#BE9B7A }
```

If only the border color should be changed use the property `border-color`.

```
.border{ border-color:#BE9B7A }
```

If you want to add a box shadow in that color use:

Here you see how a box with a 4 pixel #BE9B7A colored shadow looks like.

```
.boxshadow{ -moz-box-shadow:4px 4px 4px  
4px #BE9B7A; -webkit-box-shadow:4px 4px  
4px 4px #BE9B7A; box-shadow:4px 4px 4px  
4px #BE9B7A }
```

Background

The CSS property to change the background color of an element to Hex BE9B7A is called "background". The background property can be set on classes, ids or directly on the HTML element.

```
.background, #background, body{  
background:#BE9B7A }
```

If only the background color should be changed can be used:

```
.background{ background-color:#BE9B7A }
```

This example shows the color as background, it is applied via the CSS property "background".

To optimize and compress your CSS code, you can use our [online CSS compressor and optimizer](#) based on csstidy. If you want to create a linear or radial gradient as background or border, check our [CSS Gradient Generator](#).

Hey! You found this booklet interesting? Support Converting Colors with the new Membership Option!

The pro membership hides all ads, plus gives you double the colors in the color bucket, and more awesome pro features!

[Learn more, Memberships starting at \\$2.50/m!](#)

**Follow me
on Twitter!**

@ConvertingColor