

# Converting Colors

Hex(BEA49F)

Have a look what the booklet for  
Hex(BEA49F) contains.

<b>Hex(BEA49F)</b> .....	3
<i><b>Conversions</b></i> .....	4
<i><b>Details</b></i> .....	6
<i><b>Harmonies</b></i> .....	11
<i><b>Previews</b></i> .....	23
<i><b>Color Blindness Simulation</b></i> .....	26
<i><b>CSS Examples</b></i> .....	29

# **Color**

**Hex(BEA49F)**

# Conversions

## Conversions Part 1

Format	Color
Hex	BEA49F
RGB	190, 164, 159
RGB Percent	75%, 64%, 62%
CMY	0.2549, 0.3569, 0.3765
CMYK	0.00, 0.14, 0.16, 0.25
HSL	10°, 19%, 68%
HSV	10°, 16%, 75%
XYZ	40.7687, 40.0013, 38.3732
YIQ	171.2040, 17.1010, 3.9570

# Conversions

## Conversions Part 2

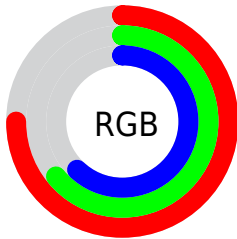
<b>Format</b>	<b>Color</b>
<b>RYB</b>	190, 165, 159
Decimal	12493983
CIELab	69.47, 8.67, 6.09
CIELCh	69, 10.598, 35.087
Yxy	40.0013, 0.3422, 0.3357
Android (android.graphics.Color)	4290684063 (0xFFBEA49F)
YUV	171.2040, -6.0166, 16.4841
Hunter-Lab	63.2466, 4.3795, 8.3000

# Details

The Hex color **BEA49F** is a light color, and the websafe version is hex **CC9999**. A complement of this color would be **9FB9BE**, and the grayscale version is **ABABAB**.

A 20% lighter version of the original color is **F7DBD6**, and **88706C** is the 20% darker color. If you saturate the color by 10%, you get **BE948C**, and if you desaturate by 10%, it is **BEB4B2**.

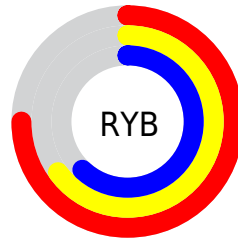
# Distribution



Red (75%)

Green (64%)

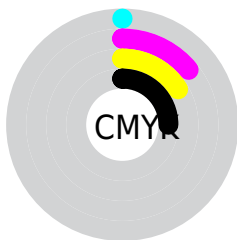
Blue (62%)



Red (75%)

Yellow (65%)

Blue (62%)

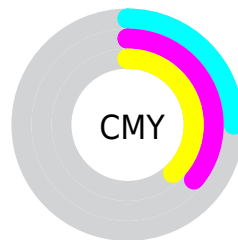


Cyan (0%)

Magenta (14%)

Yellow (16%)

Black (25%)



Cyan (25%)

Magenta (36%)

Yellow (38%)

# Brightness & Saturation Gradients

These gradients show how the Hex color BEA49F changes by changing the brightness by 10 percent. The first figure shows a shift by +10% for each color and the second figure -10%.

Similar to the brightness gradients but the following saturation gradients show a change of the Hex color BEA49F by changing the saturation by 10% instead.





BEA49F



BEA49F

FFFFFF



A38A85



F7DBD6



88706C



FFF7F2



6F5853



56403C



3E2A27



281612



100000



000000



BEA49F



BEA49F

 BE948C

 BEB4B2

 BE8479

 BEC4C5

 BE7466

 BED4D8

 BE6453

 BEE4EB

 BE5440

 BEF4FE

 BE442D

 BEFFFF

 BE341A

 BE2507

 BE1F00

# Harmonies

## Analogous

The Analogous color harmony consists of three colors that are next to each other on the color wheel.



BEA3A8



BEA49F



B9A699

# Triad

The Triadic color harmony groups three colors that are evenly spaced from another and form a triangle on the color wheel.



BEA49F



9AAFA1



A2AABD

# Complementary

The Complementary color scheme is a pair of colors which are on the opposite of each other on the color wheel.



BEA49F



9FB9BE

# Split Complementary

Split-complementary colors differ from the complementary color scheme. The scheme consists of three colors, the original color and two neighbors of the complement color.



97ADBB



BEA49F



93AFAB

# Square

The Square scheme is like the rectangle color scheme, but the four colors are evenly spaced on the color wheel.



BEA49F



A5AC9A



92AFB4



AEA7B9

# Rectangle

The Rectangle color scheme consists of four colors that form a rectangle on the color wheel.



BEA49F



B3A897



92AFB4



9EABBD

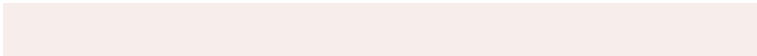


# Sweetspot

The Sweet Spot groups the original color and five complimentary colors.



BEA49F



F7EDEB



BE9FB9



7D7775



FCFCFC



7D7D7D



# Same Dimension

The Same Dimension uses a secret algorithm to generate beautiful new colors.



BEA49F



F7CEC6



BEB39F



5E5655



9E1A00



1F0500



# Inverse Universe

The Inverse Universe completely reimagines the original color for something new.



9FB9BE



C6EFF7



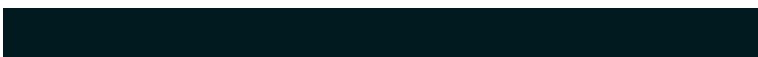
9FAABE



555D5E



00859E

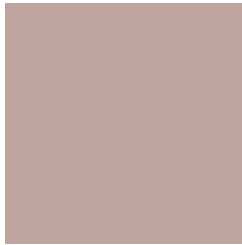


001A1F



# Previews

## White Background



This preview shows how the Hex color BEA49F looks on a white background.

## Color Contrast Check

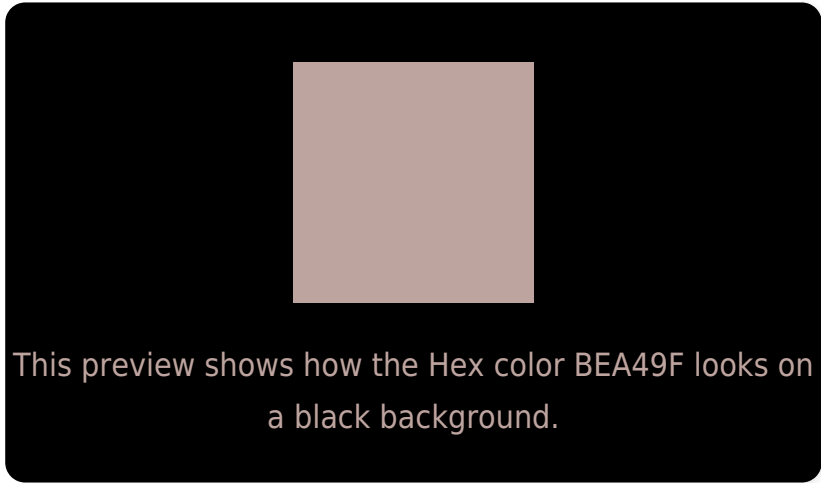
Large Text (above 18pt) WCAG AA × Fail

Any Text WCAG AA × Fail

Large Text (above 18pt) WCAG AAA × Fail

Any Text WCAG AAA × Fail

# Black Background



## Color Contrast Check

Large Text (above 18pt) WCAG AA ✓ Pass

Any Text WCAG AA ✓ Pass

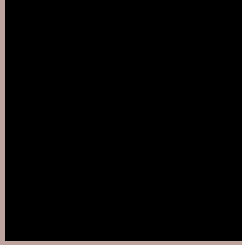
Large Text (above 18pt) WCAG AAA ✓ Pass

Any Text WCAG AAA ✓ Pass

If you want to check with other color combinations, try the [Color Contrast Checker](#).



## Hex BEA49F Background



This preview shows how black text looks on a background with the Hex color BEA49F.

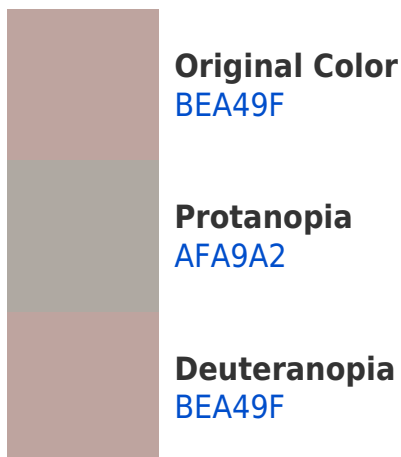


This preview shows how white text looks on a background with the Hex color BEA49F.

# Color Blindness Simulation

Color vision deficiency is a very complex topic, and I could not describe the different causes any better than Wikipedia does, so if you want to learn more, you should check out their [article about color blindness](#).

## Dichromacy





# Trichromacy



**Original Color**  
BEA49F

**Protanomaly**  
B4A7A1

**Deuteranomaly**  
BEA49F

**Tritanomaly**  
BFA3A9

# Monochromacy



**Original Color**  
BEA49F

**Achromatopsia**  
ABABAB

**Achromatomaly**  
B2A8A7

# CSS Examples

## Text

The CSS property to change the color of the text to Hex BEA49F is called "color". The color property can be set on classes, ids or directly on the HTML element.

This example shows how text in the color #BEA49F looks like.

```
.text, #text, p{  
    color:#BEA49F  
}
```

If you want to add a text shadow in that color use the text-shadow property, you can generate a text shadow directly with our [CSS Text Shadow Generator](#).

Here you see how black text with a 4 pixel #BEA49F colored shadow looks like.

```
.shadow{ text-shadow: 4px 4px 2px #BEA49F
}
```

## Border

The CSS property to change the border of an element to Hex BEA49F is called "border". The border property can be set on classes, ids or directly on the HTML element.

This example shows the color as border, it can be applied via the CSS property "border" or "border-color".

```
.border, #border, table{ border:4px solid
#BEA49F }
```

If only the border color should be changed use the property `border-color`.

```
.border{ border-color:#BEA49F }
```

If you want to add a box shadow in that color use:

Here you see how a box with a 4 pixel #BEA49F colored shadow looks like.

```
.boxshadow{ -moz-box-shadow:4px 4px 4px  
4px #BEA49F; -webkit-box-shadow:4px 4px  
4px 4px #BEA49F; box-shadow:4px 4px 4px  
4px #BEA49F }
```

# Background

The CSS property to change the background color of an element to Hex BEA49F is called "background". The background property can be set on classes, ids or directly on the HTML element.

```
.background, #background, body{  
background:#BEA49F }
```

If only the background color should be changed can be used:

```
.background{ background-color:#BEA49F }
```

This example shows the color as background, it is applied via the CSS property "background".

To optimize and compress your CSS code, you can use our [online CSS compressor and optimizer](#) based on csstidy. If you want to create a linear or radial gradient as background or border, check our [CSS Gradient Generator](#).



Hey! You found this booklet interesting? Support Converting Colors with the new Membership Option!

The pro membership hides all ads, plus gives you double the colors in the color bucket, and more awesome pro features!

**[Learn more, Memberships starting at \\$2.50/m!](#)**

**Follow me  
on Twitter!**

@ConvertingColor