

# Converting Colors

Hex(BEA7A8)

Have a look what the booklet for  
Hex(BEA7A8) contains.

<b>Hex(BEA7A8)</b> .....	3
<i><b>Conversions</b></i> .....	4
<i><b>Details</b></i> .....	6
<i><b>Harmonies</b></i> .....	11
<i><b>Previews</b></i> .....	23
<i><b>Color Blindness Simulation</b></i> .....	26
<i><b>CSS Examples</b></i> .....	29

# **Color**

**Hex(BEA7A8)**

# Conversions

## Conversions Part 1

Format	Color
Hex	BEA7A8
RGB	190, 167, 168
RGB Percent	75%, 65%, 66%
CMY	0.2549, 0.3451, 0.3412
CMYK	0.00, 0.12, 0.12, 0.25
HSL	357°, 15%, 70%
HSV	357°, 12%, 75%
XYZ	42.1218, 41.4117, 42.8190
YIQ	173.9910, 13.3870, 5.1870

# Conversions

## Conversions Part 2

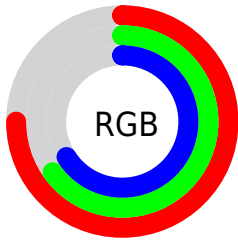
Format	Color
<b>RYB</b>	190, 167, 168
Decimal	12494760
CIELab	70.46, 8.52, 2.55
CIELCh	70, 8.891, 16.642
Yxy	41.4117, 0.3334, 0.3277
Android (android.graphics.Color)	4290684840 (0xFFBEA7A8)
YUV	173.9910, -2.9536, 14.0399
Hunter-Lab	64.3520, 4.2219, 5.5955

# Details

The Hex color **BEA7A8** is a light color, and the websafe version is hex **999999**. A complement of this color would be **A7BEBD**, and the grayscale version is **AEAFAE**.

A 20% lighter version of the original color is **F6DEDF**, and **887374** is the 20% darker color. If you saturate the color by 10%, you get **BE9496**, and if you desaturate by 10%, it is **BEBABA**.

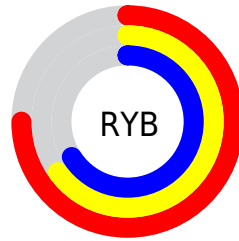
# Distribution



Red (75%)

Green (65%)

Blue (66%)



Red (75%)

Yellow (65%)

Blue (66%)

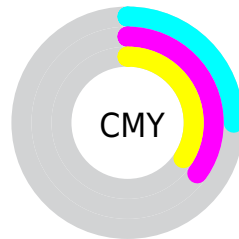


Cyan (0%)

Magenta (12%)

Yellow (12%)

Black (25%)



Cyan (25%)

Magenta (35%)

Yellow (34%)

# Brightness & Saturation Gradients

These gradients show how the Hex color BEA7A8 changes by changing the brightness by 10 percent. The first figure shows a shift by +10% for each color and the second figure -10%.

Similar to the brightness gradients but the following saturation gradients show a change of the Hex color BEA7A8 by changing the saturation by 10% instead.





BEA7A8



BEA7A8

FFFFFF



A38D8E



F6DEDF



887374



FFFBFC



6F5A5C



564344



3F2D2E



291819



150000



000000



BEA7A8



BEA7A8

 BE9496

 BEBABA

 BE8184

 BECDCC

 BE6E71

 BEE0DF

 BE5B5F

 BEF3F1

 BE484D

 BEFFFF

 BE353B

 BE2229

 BE0F17

 BE0008

# Harmonies

## Analogous

The Analogous color harmony consists of three colors that are next to each other on the color wheel.



BBA7B0



BEA7A8



BCA8A1

# Triad

The Triadic color harmony groups three colors that are evenly spaced from another and form a triangle on the color wheel.



BEA7A8



A5B0A1



A0AEBC

# Complementary

The Complementary color scheme is a pair of colors which are on the opposite of each other on the color wheel.



BEA7A8



A7BEBD

# Split Complementary

Split-complementary colors differ from the complementary color scheme. The scheme consists of three colors, the original color and two neighbors of the complement color.



9AB0B8



BEA7A8



9DB1A8

# Square

The Square scheme is like the rectangle color scheme, but the four colors are evenly spaced on the color wheel.



BEA7A8



AEAD9D



99B1B1



AAABBC

# Rectangle

The Rectangle color scheme consists of four colors that form a rectangle on the color wheel.



BEA7A8



B9AA9E



99B1B1



9DAFBB

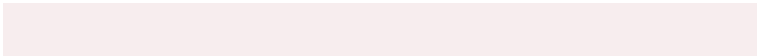


# Sweetspot

The Sweet Spot groups the original color and five complimentary colors.



BEA7A8



F7EDEE



BDA7BE



7D7777



FCFCFC



7D7D7D



# Same Dimension

The Same Dimension uses a secret algorithm to generate beautiful new colors.



BEA7A8



F7D2D4



BEB1A7



5E5555



9E0007



1F0001



# Inverse Universe

The Inverse Universe completely reimagines the original color for something new.



BEA7A8



F7D2D4



A7B4BE



5E5555



9E0007

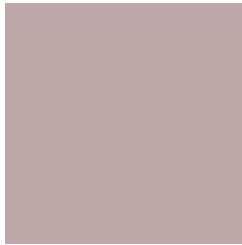


1F0001



# Previews

## White Background



This preview shows how the Hex color BEA7A8 looks on a white background.

## Color Contrast Check

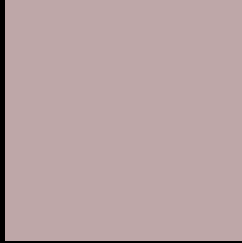
Large Text (above 18pt) WCAG AA × Fail

Any Text WCAG AA × Fail

Large Text (above 18pt) WCAG AAA × Fail

Any Text WCAG AAA × Fail

# Black Background



This preview shows how the Hex color BEA7A8 looks on a black background.

## Color Contrast Check

Large Text (above 18pt) WCAG AA ✓ Pass

Any Text WCAG AA ✓ Pass

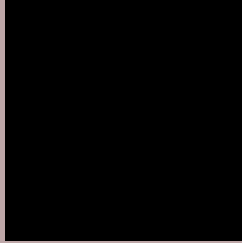
Large Text (above 18pt) WCAG AAA ✓ Pass

Any Text WCAG AAA ✓ Pass

If you want to check with other color combinations, try the [Color Contrast Checker](#).



## Hex BEA7A8 Background



This preview shows how black text looks on a background with the Hex color BEA7A8.

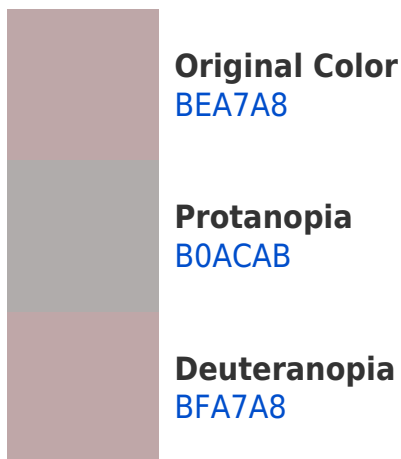


This preview shows how white text looks on a background with the Hex color BEA7A8.

# Color Blindness Simulation

Color vision deficiency is a very complex topic, and I could not describe the different causes any better than Wikipedia does, so if you want to learn more, you should check out their [article about color blindness](#).

## Dichromacy





# Trichromacy



**Original Color**  
BEA7A8

**Protanomaly**  
B5AAAA

**Deuteranomaly**  
BFA7A8

**Tritanomaly**  
BFA6AE

# Monochromacy



**Original Color**  
BEA7A8

**Achromatopsia**  
AEAEAE

**Achromatomaly**  
B4ABAC

# CSS Examples

## Text

The CSS property to change the color of the text to Hex BEA7A8 is called "color". The color property can be set on classes, ids or directly on the HTML element.

This example shows how text in the color #BEA7A8 looks like.

```
.text, #text, p{  
    color:#BEA7A8  
}
```

If you want to add a text shadow in that color use the text-shadow property, you can generate a text shadow directly with our [CSS Text Shadow Generator](#).

Here you see how black text with a 4 pixel #BEA7A8 colored shadow looks like.

```
.shadow{ text-shadow: 4px 4px 2px #BEA7A8
}
```

## Border

The CSS property to change the border of an element to Hex BEA7A8 is called "border". The border property can be set on classes, ids or directly on the HTML element.

This example shows the color as border, it can be applied via the CSS property "border" or "border-color".

```
.border, #border, table{ border:4px solid
#BEA7A8 }
```

If only the border color should be changed use the property `border-color`.

```
.border{ border-color:#BEA7A8 }
```

If you want to add a box shadow in that color use:

Here you see how a box with a 4 pixel #BEA7A8 colored shadow looks like.

```
.boxshadow{ -moz-box-shadow:4px 4px 4px  
4px #BEA7A8; -webkit-box-shadow:4px 4px  
4px 4px #BEA7A8; box-shadow:4px 4px 4px  
4px #BEA7A8 }
```

# Background

The CSS property to change the background color of an element to Hex BEA7A8 is called "background". The background property can be set on classes, ids or directly on the HTML element.

```
.background, #background, body{  
background:#BEA7A8 }
```

If only the background color should be changed can be used:

```
.background{ background-color:#BEA7A8 }
```

This example shows the color as background, it is applied via the CSS property "background".

To optimize and compress your CSS code, you can use our [online CSS compressor and optimizer](#) based on csstidy. If you want to create a linear or radial gradient as background or border, check our [CSS Gradient Generator](#).



Hey! You found this booklet interesting? Support Converting Colors with the new Membership Option!

The pro membership hides all ads, plus gives you double the colors in the color bucket, and more awesome pro features!

**[Learn more, Memberships starting at \\$2.50/m!](#)**

**Follow me  
on Twitter!**

@ConvertingColor