

Converting Colors

Hex(BEA891)

Have a look what the booklet for
Hex(BEA891) contains.

Hex(BEA891)	3
<i>Conversions</i>	4
<i>Details</i>	6
<i>Harmonies</i>	11
<i>Previews</i>	23
<i>Color Blindness Simulation</i>	26
<i>CSS Examples</i>	29

Color

Hex(BEA891)

Conversions

Conversions Part 1

Format	Color
Hex	BEA891
RGB	190, 168, 145
RGB Percent	75%, 66%, 57%
CMY	0.2549, 0.3412, 0.4314
CMYK	0.00, 0.12, 0.24, 0.25
HSL	31°, 26%, 66%
HSV	31°, 24%, 75%
XYZ	40.3487, 40.9967, 32.5746
YIQ	171.9560, 20.4950, -2.4890

Conversions

Conversions Part 2

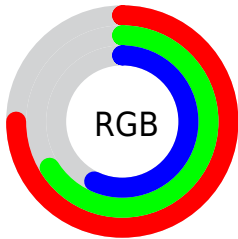
Format	Color
RYB	188, 190, 145
Decimal	12494993
CIELab	70.17, 4.34, 14.81
CIELCh	70, 15.435, 73.663
Yxy	40.9967, 0.3542, 0.3599
Android (android.graphics.Color)	4290685073 (0xFFBEA891)
YUV	171.9560, -13.2893, 15.8246
Hunter-Lab	64.0287, 0.4343, 14.6563

Details

The Hex color **BEA891** is a light color, and the websafe version is hex **CC9999**. A complement of this color would be **91A7BE**, and the grayscale version is **ACACAC**.

A 20% lighter version of the original color is **F7DFC7**, and **88745F** is the 20% darker color. If you saturate the color by 10%, you get **BE9F7E**, and if you desaturate by 10%, it is **BEB1A4**.

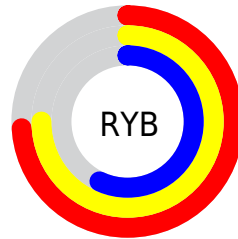
Distribution



Red (75%)

Green (66%)

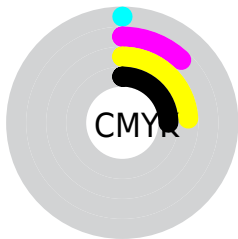
Blue (57%)



Red (74%)

Yellow (75%)

Blue (57%)

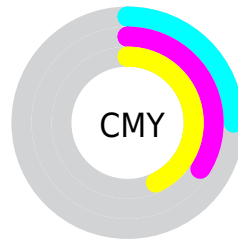


Cyan (0%)

Magenta (12%)

Yellow (24%)

Black (25%)



Cyan (25%)

Magenta (34%)

Yellow (43%)

Brightness & Saturation Gradients

These gradients show how the Hex color BEA891 changes by changing the brightness by 10 percent. The first figure shows a shift by +10% for each color and the second figure -10%.

Similar to the brightness gradients but the following saturation gradients show a change of the Hex color BEA891 by changing the saturation by 10% instead.

 BEA891

 BEA891

FFFFFF

 A38E77

 F7DFC7

 88745F

 FFFCE3

 6E5C47

 554430

 3E2E1B

 281901

 0C0000

 000000

 BEA891

 BEA891

 BE9F7E

 BEB1A4

 BE956B

 BEBBB7

 BE8C58

 BEC4CA

 BE8345

 BECDDD

 BE7A32

 BED6F0

 BE701F

 BEE0FF

 BE670C

 BEE9FF

 BE6100

 BEF2FF

 BEFCFF

Harmonies

Analogous

The Analogous color harmony consists of three colors that are next to each other on the color wheel.



C7A499



BEA891



B0AD90

Triad

The Triadic color harmony groups three colors that are evenly spaced from another and form a triangle on the color wheel.



BEA891



88B4B2



B6A6C0

Complementary

The Complementary color scheme is a pair of colors which are on the opposite of each other on the color wheel.



BEA891



91A7BE

Split Complementary

Split-complementary colors differ from the complementary color scheme. The scheme consists of three colors, the original color and two neighbors of the complement color.



A4ABC7



BEA891



88B2BE

Square

The Square scheme is like the rectangle color scheme, but the four colors are evenly spaced on the color wheel.



BEA891



91B3A3



93AFC6



C3A3B4

Rectangle

The Rectangle color scheme consists of four colors that form a rectangle on the color wheel.



BEA891



A5AF94



93AFC6



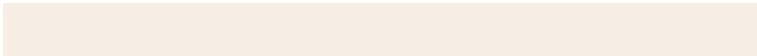
B0A7C3

Sweetspot

The Sweet Spot groups the original color and five complimentary colors.



BEA891



F7EFE6



BE91A8



7D7873



FCFCFC



7D7D7D

Same Dimension

The Same Dimension uses a secret algorithm to generate beautiful new colors.



BEA891



F7D5B2



BEBE91



5E5A55



9E5100



1F1000

Inverse Universe

The Inverse Universe completely reimagines the original color for something new.



91A7BE



B2D4F7



9191BE



555A5E



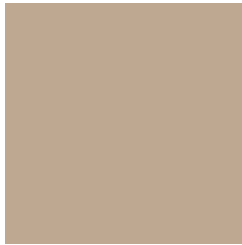
004D9E



000F1F

Previews

White Background



This preview shows how the Hex color BEA891 looks on a white background.

Color Contrast Check

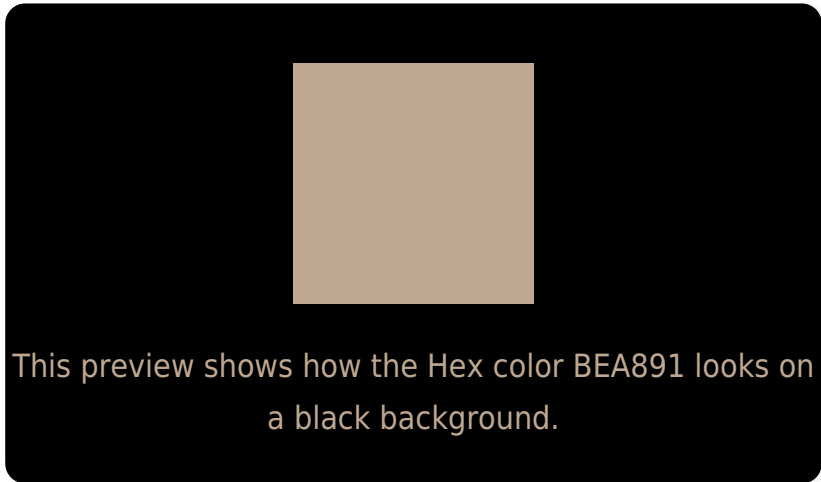
Large Text (above 18pt) WCAG AA × Fail

Any Text WCAG AA × Fail

Large Text (above 18pt) WCAG AAA × Fail

Any Text WCAG AAA × Fail

Black Background



Color Contrast Check

Large Text (above 18pt) WCAG AA ✓ Pass

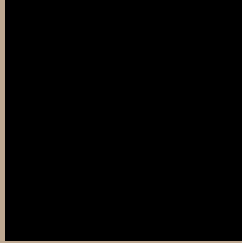
Any Text WCAG AA ✓ Pass

Large Text (above 18pt) WCAG AAA ✓ Pass

Any Text WCAG AAA ✓ Pass

If you want to check with other color combinations, try the [Color Contrast Checker](#).

Hex BEA891 Background



This preview shows how black text looks on a background with the Hex color BEA891.



This preview shows how white text looks on a background with the Hex color BEA891.

Color Blindness Simulation

Color vision deficiency is a very complex topic, and I could not describe the different causes any better than Wikipedia does, so if you want to learn more, you should check out their [article about color blindness](#).

Dichromacy



Original Color
BEA891

Protanopia
B4AB93

Deuteranopia
C5A592



Tritanopia
C2A4B0

Trichromacy



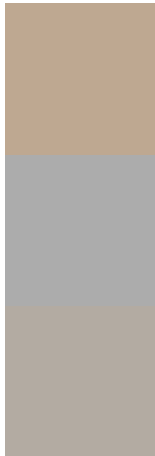
Original Color
BEA891

Protanomaly
B8AA92

Deuteranomaly
C2A692

Tritanomaly
C1A5A5

Monochromacy



Original Color
BEA891

Achromatopsia
ACACAC

Achromatomaly
B3ABA2

CSS Examples

Text

The CSS property to change the color of the text to Hex BEA891 is called "color". The color property can be set on classes, ids or directly on the HTML element.

This example shows how text in the color #BEA891 looks like.

```
.text, #text, p{  
    color:#BEA891  
}
```

If you want to add a text shadow in that color use the text-shadow property, you can generate a text shadow directly with our [CSS Text Shadow Generator](#).

Here you see how black text with a 4 pixel #BEA891 colored shadow looks like.

```
.shadow{ text-shadow: 4px 4px 2px #BEA891
}
```

Border

The CSS property to change the border of an element to Hex BEA891 is called "border". The border property can be set on classes, ids or directly on the HTML element.

This example shows the color as border, it can be applied via the CSS property "border" or "border-color".

```
.border, #border, table{ border:4px solid
#BEA891 }
```

If only the border color should be changed use the property `border-color`.

```
.border{ border-color:#BEA891 }
```

If you want to add a box shadow in that color use:

Here you see how a box with a 4 pixel #BEA891 colored shadow looks like.

```
.boxshadow{ -moz-box-shadow:4px 4px 4px  
4px #BEA891; -webkit-box-shadow:4px 4px  
4px 4px #BEA891; box-shadow:4px 4px 4px  
4px #BEA891 }
```

Background

The CSS property to change the background color of an element to Hex BEA891 is called "background". The background property can be set on classes, ids or directly on the HTML element.

```
.background, #background, body{  
background:#BEA891 }
```

If only the background color should be changed can be used:

```
.background{ background-color:#BEA891 }
```

This example shows the color as background, it is applied via the CSS property "background".

To optimize and compress your CSS code, you can use our [online CSS compressor and optimizer](#) based on csstidy. If you want to create a linear or radial gradient as background or border, check our [CSS Gradient Generator](#).

Hey! You found this booklet interesting? Support Converting Colors with the new Membership Option!

The pro membership hides all ads, plus gives you double the colors in the color bucket, and more awesome pro features!

[Learn more, Memberships starting at \\$2.50/m!](#)

**Follow me
on Twitter!**

@ConvertingColor