

Converting Colors

Hex(BEA99B)

Have a look what the booklet for
Hex(BEA99B) contains.

Hex(BEA99B)	3
<i>Conversions</i>	4
<i>Details</i>	6
<i>Harmonies</i>	11
<i>Previews</i>	23
<i>Color Blindness Simulation</i>	26
<i>CSS Examples</i>	29

Color

Hex(BEA99B)

Conversions

Conversions Part 1

Format	Color
Hex	BEA99B
RGB	190, 169, 155
RGB Percent	75%, 66%, 61%
CMY	0.2549, 0.3373, 0.3922
CMYK	0.00, 0.11, 0.18, 0.25
HSL	24°, 21%, 68%
HSV	24°, 18%, 75%
XYZ	41.3396, 41.6896, 36.8784
YIQ	173.6830, 17.0100, 0.0980

Conversions

Conversions Part 2

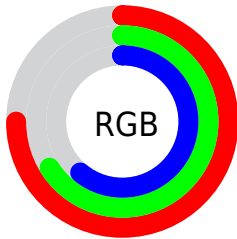
Format	Color
RYB	190, 178, 155
Decimal	12495259
CIELab	70.66, 5.31, 10.00
CIELCh	71, 11.319, 62.011
Yxy	41.6896, 0.3448, 0.3477
Android (android.graphics.Color)	4290685339 (0xFFBEA99B)
YUV	173.6830, -9.2107, 14.3100
Hunter-Lab	64.5675, 1.2921, 11.3331

Details

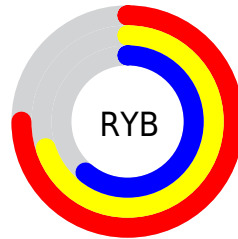
The Hex color **BEA99B** is a light color, and the websafe version is hex **999999**. A complement of this color would be **9BB0BE**, and the grayscale version is **AEAFAE**.

A 20% lighter version of the original color is **F7E0D1**, and **887568** is the 20% darker color. If you saturate the color by 10%, you get **BE9E88**, and if you desaturate by 10%, it is **BEB4AE**.

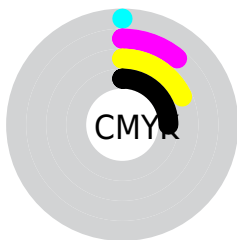
Distribution



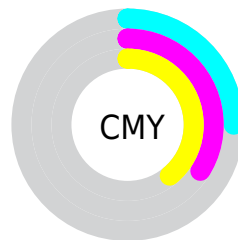
- Red (75%)
- Green (66%)
- Blue (61%)



- Red (75%)
- Yellow (70%)
- Blue (61%)



- Cyan (0%)
- Magenta (11%)
- Yellow (18%)
- Black (25%)



- Cyan (25%)
- Magenta (34%)
- Yellow (39%)

Brightness & Saturation Gradients

These gradients show how the Hex color BEA99B changes by changing the brightness by 10 percent. The first figure shows a shift by +10% for each color and the second figure -10%.

Similar to the brightness gradients but the following saturation gradients show a change of the Hex color BEA99B by changing the saturation by 10% instead.

 BEA99B

 BEA99B

FFFFFF

 A38F81

 F7E0D1

 887568

 FFFDEE

 6F5C50

 564539

 3E2F23

 281A0E

 100000

 000000

 BEA99B

 BEA99B

 BE9E88

 BEB4AE

 BE9275

 BEC0C1

 BE8762

 BECBD4

 BE7B4F

 BED7E7

 BE703C

 BEE2FA

 BE6529

 BEEDFF

 BE5916

 BEF9FF

 BE4E03

 BEFFFF

 BE4C00

Harmonies

Analogous

The Analogous color harmony consists of three colors that are next to each other on the color wheel.



C3A7A2



BEA99B



B5AC98

Triad

The Triadic color harmony groups three colors that are evenly spaced from another and form a triangle on the color wheel.



BEA99B



95B3AD



B0AABE

Complementary

The Complementary color scheme is a pair of colors which are on the opposite of each other on the color wheel.



BEA99B



9BB0BE

Split Complementary

Split-complementary colors differ from the complementary color scheme. The scheme consists of three colors, the original color and two neighbors of the complement color.



A3ADC1



BEA99B



93B3B7

Square

The Square scheme is like the rectangle color scheme, but the four colors are evenly spaced on the color wheel.



BEA99B



9EB2A3



98B1BF



BBA7B7

Rectangle

The Rectangle color scheme consists of four colors that form a rectangle on the color wheel.



BEA99B



ADAF9A



98B1BF



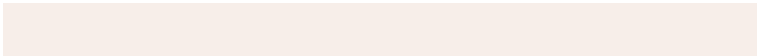
ACABC0

Sweetspot

The Sweet Spot groups the original color and five complimentary colors.



BEA99B



F7EEE9



BE9BB0



7D7874



FCFCFC



7D7D7D

Same Dimension

The Same Dimension uses a secret algorithm to generate beautiful new colors.



BEA99B



F7D7C1



BEBB9B



5E5955



9E3F00



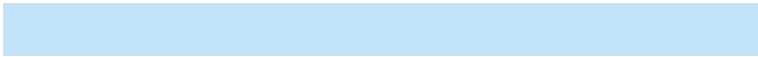
1F0C00

Inverse Universe

The Inverse Universe completely reimagines the original color for something new.



9BB0BE



C1E2F7



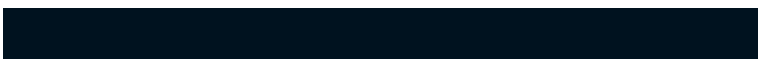
9B9EBE



555B5E



005F9E



00121F

Previews

White Background



This preview shows how the Hex color BEA99B looks on a white background.

Color Contrast Check

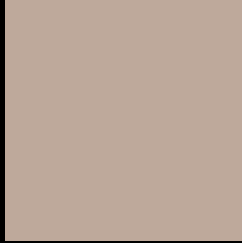
Large Text (above 18pt) WCAG AA × Fail

Any Text WCAG AA × Fail

Large Text (above 18pt) WCAG AAA × Fail

Any Text WCAG AAA × Fail

Black Background



This preview shows how the Hex color BEA99B looks on a black background.

Color Contrast Check

Large Text (above 18pt) WCAG AA ✓ Pass

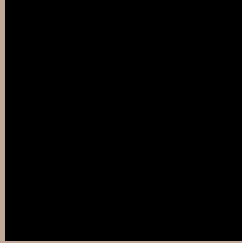
Any Text WCAG AA ✓ Pass

Large Text (above 18pt) WCAG AAA ✓ Pass

Any Text WCAG AAA ✓ Pass

If you want to check with other color combinations, try the [Color Contrast Checker](#).

Hex BEA99B Background



This preview shows how black text looks on a background with the Hex color BEA99B.



This preview shows how white text looks on a background with the Hex color BEA99B.

Color Blindness Simulation

Color vision deficiency is a very complex topic, and I could not describe the different causes any better than Wikipedia does, so if you want to learn more, you should check out their [article about color blindness](#).

Dichromacy



Original Color
BEA99B

Protanopia
B4AC9D

Deuteranopia
C4A79B



Tritanopia
C1A6B2

Trichromacy



Original Color
BEA99B

Protanomaly
B8AB9C

Deuteranomaly
C2A89B

Tritanomaly
C0A7AA

Monochromacy



Original Color
BEA99B

Achromatopsia
AEAEAE

Achromatomaly
B4ACA7

CSS Examples

Text

The CSS property to change the color of the text to Hex BEA99B is called "color". The color property can be set on classes, ids or directly on the HTML element.

This example shows how text in the color #BEA99B looks like.

```
.text, #text, p{  
    color:#BEA99B  
}
```

If you want to add a text shadow in that color use the text-shadow property, you can generate a text shadow directly with our [CSS Text Shadow Generator](#).

Here you see how black text with a 4 pixel #BEA99B colored shadow looks like.

```
.shadow{ text-shadow: 4px 4px 2px #BEA99B
}
```

Border

The CSS property to change the border of an element to Hex BEA99B is called "border". The border property can be set on classes, ids or directly on the HTML element.

This example shows the color as border, it can be applied via the CSS property "border" or "border-color".

```
.border, #border, table{ border:4px solid
#BEA99B }
```

If only the border color should be changed use the property `border-color`.

```
.border{ border-color:#BEA99B }
```

If you want to add a box shadow in that color use:

Here you see how a box with a 4 pixel #BEA99B colored shadow looks like.

```
.boxshadow{ -moz-box-shadow:4px 4px 4px  
4px #BEA99B; -webkit-box-shadow:4px 4px  
4px 4px #BEA99B; box-shadow:4px 4px 4px  
4px #BEA99B }
```

Background

The CSS property to change the background color of an element to Hex BEA99B is called "background". The background property can be set on classes, ids or directly on the HTML element.

```
.background, #background, body{  
background:#BEA99B }
```

If only the background color should be changed can be used:

```
.background{ background-color:#BEA99B }
```

This example shows the color as background, it is applied via the CSS property "background".

To optimize and compress your CSS code, you can use our [online CSS compressor and optimizer](#) based on csstidy. If you want to create a linear or radial gradient as background or border, check our [CSS Gradient Generator](#).

Hey! You found this booklet interesting? Support Converting Colors with the new Membership Option!

The pro membership hides all ads, plus gives you double the colors in the color bucket, and more awesome pro features!

[Learn more, Memberships starting at \\$2.50/m!](#)

**Follow me
on Twitter!**

@ConvertingColor