

Converting Colors

Hex(BEAAAC)

Have a look what the booklet for
Hex(BEAAAC) contains.

Hex(BEAAAC)	3
<i>Conversions</i>	4
<i>Details</i>	6
<i>Harmonies</i>	11
<i>Previews</i>	23
<i>Color Blindness Simulation</i>	26
<i>CSS Examples</i>	29

Color

Hex(BEAAAC)

Conversions

Conversions Part 1

Format	Color
Hex	BEAAAC
RGB	190, 170, 172
RGB Percent	75%, 67%, 67%
CMY	0.2549, 0.3333, 0.3255
CMYK	0.00, 0.11, 0.09, 0.25
HSL	354°, 13%, 71%
HSV	354°, 11%, 75%
XYZ	43.0563, 42.6752, 44.9975
YIQ	176.2080, 11.2780, 4.8620

Conversions

Conversions Part 2

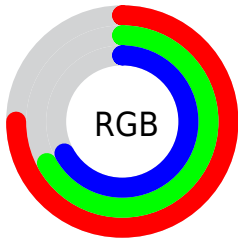
Format	Color
RYB	190, 170, 172
Decimal	12495532
CIELab	71.33, 7.57, 1.60
CIElCh	71, 7.733, 11.965
Yxy	42.6752, 0.3294, 0.3264
Android (android.graphics.Color)	4290685612 (0xFFBEAAAC)
YUV	176.2080, -2.0745, 12.0956
Hunter-Lab	65.3262, 3.3279, 4.8886

Details

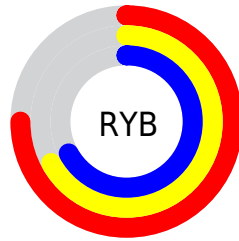
The Hex color **BEAAAC** is a light color, and the websafe version is hex **999999**. A complement of this color would be **AABEBC**, and the grayscale version is **B0B0B0**.

A 20% lighter version of the original color is **F6E1E3**, and **897678** is the 20% darker color. If you saturate the color by 10%, you get **BE979B**, and if you desaturate by 10%, it is **BEBDBD**.

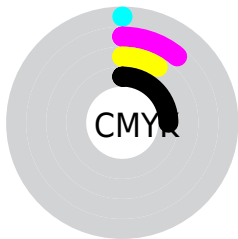
Distribution



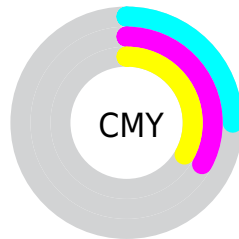
- Red (75%)
- Green (67%)
- Blue (67%)



- Red (75%)
- Yellow (67%)
- Blue (67%)



- Cyan (0%)
- Magenta (11%)
- Yellow (9%)
- Black (25%)



- Cyan (25%)
- Magenta (33%)
- Yellow (33%)

Brightness & Saturation Gradients

These gradients show how the Hex color BEAAAC changes by changing the brightness by 10 percent. The first figure shows a shift by +10% for each color and the second figure -10%.

Similar to the brightness gradients but the following saturation gradients show a change of the Hex color BEAAAC by changing the saturation by 10% instead.

 BEAAAC

 BEAAAC

FFFFFF

 A39091

 F6E1E3

 897678

FFFEFF

 6F5D5F

 574647

 3F2F31

 291A1C

 160001

 000000

 BEAAAC

 BEAAAC

 BE979B

 BEBDBD

 BE848A

 BED0CE

 BE7179

 BEE3DF

 BE5E68

 BEF6F0

 BE4B57

 BEFFFF

 BE3845

 BE2534

 BE1223

 BE0013

Harmonies

Analogous

The Analogous color harmony consists of three colors that are next to each other on the color wheel.



BBAAB3



BEAAAC



BDABA6

Triad

The Triadic color harmony groups three colors that are evenly spaced from another and form a triangle on the color wheel.



BEAAAC



A9B1A4



A3B1BC

Complementary

The Complementary color scheme is a pair of colors which are on the opposite of each other on the color wheel.



BEAAAC



AABEBC

Split Complementary

Split-complementary colors differ from the complementary color scheme. The scheme consists of three colors, the original color and two neighbors of the complement color.



9EB2B8



BEAAAC



A2B3AA

Square

The Square scheme is like the rectangle color scheme, but the four colors are evenly spaced on the color wheel.



BEAAAC



B2AFA1



9EB3B1



ABAECB

Rectangle

The Rectangle color scheme consists of four colors that form a rectangle on the color wheel.



BEAAAC



BBACA2



9EB3B1



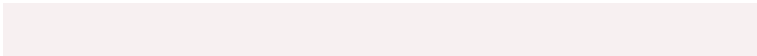
A1B1BB

Sweetspot

The Sweet Spot groups the original color and five complimentary colors.



BEAAAC



F7F0F1



BCAABE



7D7878



FCFCFC



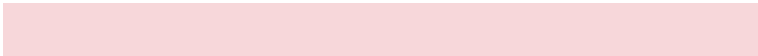
7D7D7D

Same Dimension

The Same Dimension uses a secret algorithm to generate beautiful new colors.



BEAAAC



F7D7DA



BEB2AA



5E5556



9E0010



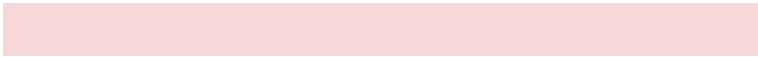
1F0003

Inverse Universe

The Inverse Universe completely reimagines the original color for something new.



BEAAAC



F7D7DA



AAB6BE



5E5556



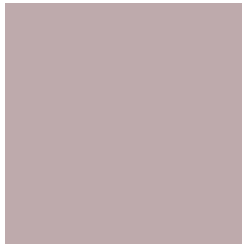
9E0010



1F0003

Previews

White Background



This preview shows how the Hex color BEAAAC looks on a white background.

Color Contrast Check

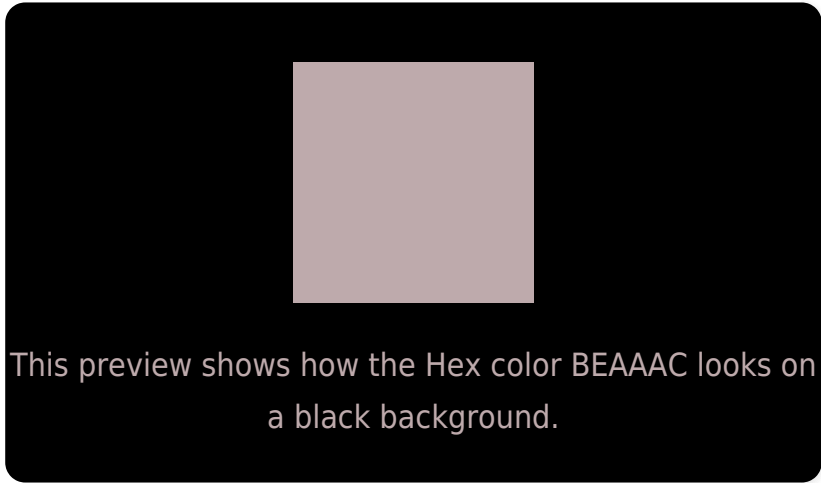
Large Text (above 18pt) WCAG AA × Fail

Any Text WCAG AA × Fail

Large Text (above 18pt) WCAG AAA × Fail

Any Text WCAG AAA × Fail

Black Background



Color Contrast Check

Large Text (above 18pt) WCAG AA ✓ Pass

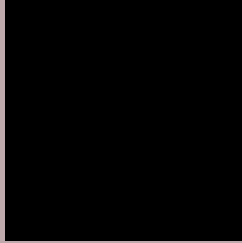
Any Text WCAG AA ✓ Pass

Large Text (above 18pt) WCAG AAA ✓ Pass

Any Text WCAG AAA ✓ Pass

If you want to check with other color combinations, try the [Color Contrast Checker](#).

Hex BEAAAC Background



This preview shows how black text looks on a background with the Hex color BEAAAC.



This preview shows how white text looks on a background with the Hex color BEAAAC.

Color Blindness Simulation

Color vision deficiency is a very complex topic, and I could not describe the different causes any better than Wikipedia does, so if you want to learn more, you should check out their [article about color blindness](#).

Dichromacy



Original Color
BEAAAC

Protanopia
B2AEAE

Deuteranopia
C0A9AC



Tritanopia
BFA8B6

Trichromacy



Original Color
BEAAAC

Protanomaly
B6ADAD

Deuteranomaly
BFA9AC

Tritanomaly
BFA9B2

Monochromacy



Original Color
BEAAAC

Achromatopsia
B0B0B0

Achromatomaly
B5AEAF

CSS Examples

Text

The CSS property to change the color of the text to Hex BEAAAC is called "color". The color property can be set on classes, ids or directly on the HTML element.

This example shows how text in the color #BEAAAC looks like.

```
.text, #text, p{  
    color:#BEAAAC  
}
```

If you want to add a text shadow in that color use the text-shadow property, you can generate a text shadow directly with our [CSS Text Shadow Generator](#).

Here you see how black text with a 4 pixel #BEAAAC colored shadow looks like.

```
.shadow{ text-shadow: 4px 4px 2px #BEAAAC
}
```

Border

The CSS property to change the border of an element to Hex BEAAAC is called "border". The border property can be set on classes, ids or directly on the HTML element.

This example shows the color as border, it can be applied via the CSS property "border" or "border-color".

```
.border, #border, table{ border:4px solid
#BEAAAC }
```

If only the border color should be changed use the property `border-color`.

```
.border{ border-color:#BEAAAC }
```

If you want to add a box shadow in that color use:

Here you see how a box with a 4 pixel #BEAAAC colored shadow looks like.

```
.boxshadow{ -moz-box-shadow:4px 4px 4px  
4px #BEAAAC; -webkit-box-shadow:4px 4px  
4px 4px #BEAAAC; box-shadow:4px 4px 4px  
4px #BEAAAC }
```

Background

The CSS property to change the background color of an element to Hex BEAAAC is called "background". The background property can be set on classes, ids or directly on the HTML element.

```
.background, #background, body{  
background:#BEAAAC }
```

If only the background color should be changed can be used:

```
.background{ background-color:#BEAAAC }
```

This example shows the color as background, it is applied via the CSS property "background".

To optimize and compress your CSS code, you can use our [online CSS compressor and optimizer](#) based on csstidy. If you want to create a linear or radial gradient as background or border, check our [CSS Gradient Generator](#).

Hey! You found this booklet interesting? Support Converting Colors with the new Membership Option!

The pro membership hides all ads, plus gives you double the colors in the color bucket, and more awesome pro features!

[Learn more, Memberships starting at \\$2.50/m!](#)

**Follow me
on Twitter!**

@ConvertingColor