

Converting Colors

Hex(BEACB0)

Have a look what the booklet for
Hex(BEACB0) contains.

Hex(BEACB0)	3
<i>Conversions</i>	4
<i>Details</i>	6
<i>Harmonies</i>	11
<i>Previews</i>	23
<i>Color Blindness Simulation</i>	26
<i>CSS Examples</i>	29

Color

Hex(BEACB0)

Conversions

Conversions Part 1

Format	Color
Hex	BEACB0
RGB	190, 172, 176
RGB Percent	75%, 67%, 69%
CMY	0.2549, 0.3255, 0.3098
CMYK	0.00, 0.09, 0.07, 0.25
HSL	347°, 12%, 71%
HSV	347°, 9%, 75%
XYZ	43.8242, 43.5868, 47.1776
YIQ	177.8380, 9.4440, 5.0600

Conversions

Conversions Part 2

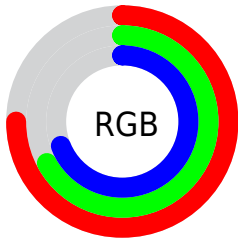
Format	Color
RYB	190, 172, 176
Decimal	12496048
CIELab	71.95, 7.17, 0.30
CIELCh	72, 7.179, 2.394
Yxy	43.5868, 0.3256, 0.3239
Android (android.graphics.Color)	4290686128 (0xFFBEACB0)
YUV	177.8380, -0.9061, 10.6661
Hunter-Lab	66.0203, 2.9526, 3.8460

Details

The Hex color **BEACB0** is a light color, and the websafe version is hex **999999**. A complement of this color would be **ACBEB0**, and the grayscale version is **B2B2B2**.

A 20% lighter version of the original color is **F6E3E8**, and **89787C** is the 20% darker color. If you saturate the color by 10%, you get **BE99A1**, and if you desaturate by 10%, it is **BEBFBF**.

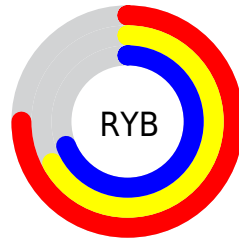
Distribution



Red (75%)

Green (67%)

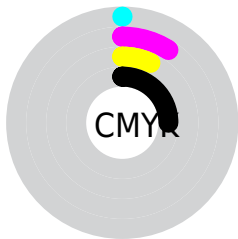
Blue (69%)



Red (75%)

Yellow (67%)

Blue (69%)

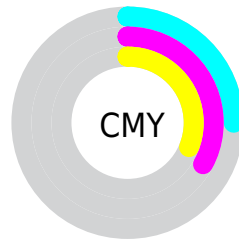


Cyan (0%)

Magenta (9%)

Yellow (7%)

Black (25%)



Cyan (25%)

Magenta (33%)

Yellow (31%)

Brightness & Saturation Gradients

These gradients show how the Hex color BEACB0 changes by changing the brightness by 10 percent. The first figure shows a shift by +10% for each color and the second figure -10%.

Similar to the brightness gradients but the following saturation gradients show a change of the Hex color BEACB0 by changing the saturation by 10% instead.

 BEACB0

 BEACB0

FFFFFF

 A39195

 F6E3E8

 89787C

 6F5F63

 57474B

 3F3134

 291C1F

 160207

 000000

 BEACB0

 BEACB0

 BE99A1

 BEBFBF

 BE8692

 BED2CE

 BE7384

 BEE5DC

 BE6075

 BEF8EB

 BE4D66

 BEFFFA

 BE3A57

 BEFFFF

 BE2749

 BE143A

 BE012B

Harmonies

Analogous

The Analogous color harmony consists of three colors that are next to each other on the color wheel.



BAADB7



BEACB0



BFACAA

Triad

The Triadic color harmony groups three colors that are evenly spaced from another and form a triangle on the color wheel.



BEACB0



AEB2A5



A4B3BC

Complementary

The Complementary color scheme is a pair of colors which are on the opposite of each other on the color wheel.



BEACB0



ACBEBA

Split Complementary

Split-complementary colors differ from the complementary color scheme. The scheme consists of three colors, the original color and two neighbors of the complement color.



A1B4B7



BEACB0



A7B4AA

Square

The Square scheme is like the rectangle color scheme, but the four colors are evenly spaced on the color wheel.



BEACB0



B5B0A3



A2B4B1



AAB1BD

Rectangle

The Rectangle color scheme consists of four colors that form a rectangle on the color wheel.



BEACB0



BDADA6



A2B4B1



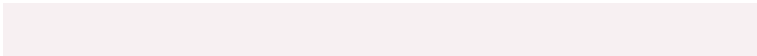
A2B3BA

Sweetspot

The Sweet Spot groups the original color and five complimentary colors.



BEACB0



F7F0F2



BAACBE



7D7879



FCFCFC



7D7D7D

Same Dimension

The Same Dimension uses a secret algorithm to generate beautiful new colors.



BEACB0



F7DCE2



BEB1AC



5E5557



9E0023



1F0007

Inverse Universe

The Inverse Universe completely reimagines the original color for something new.



BEACB0



F7DCE2



ACB9BE



5E5557



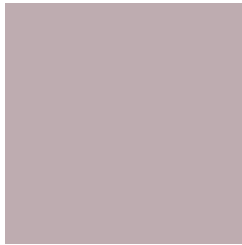
9E0023



1F0007

Previews

White Background



This preview shows how the Hex color BEACB0 looks on a white background.

Color Contrast Check

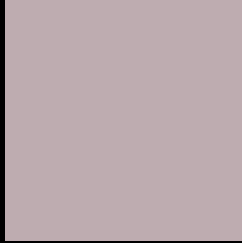
Large Text (above 18pt) WCAG AA × Fail

Any Text WCAG AA × Fail

Large Text (above 18pt) WCAG AAA × Fail

Any Text WCAG AAA × Fail

Black Background



This preview shows how the Hex color BEACB0 looks on a black background.

Color Contrast Check

Large Text (above 18pt) WCAG AA ✓ Pass

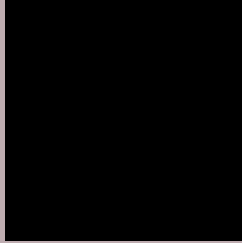
Any Text WCAG AA ✓ Pass

Large Text (above 18pt) WCAG AAA ✓ Pass

Any Text WCAG AAA ✓ Pass

If you want to check with other color combinations, try the [Color Contrast Checker](#).

Hex BEACB0 Background



This preview shows how black text looks on a background with the Hex color BEACB0.



This preview shows how white text looks on a background with the Hex color BEACB0.

Color Blindness Simulation

Color vision deficiency is a very complex topic, and I could not describe the different causes any better than Wikipedia does, so if you want to learn more, you should check out their [article about color blindness](#).

Dichromacy



Original Color
BEACB0

Protanopia
B3B0B2

Deuteranopia
C1ABB0

Trichromacy



Original Color
BEACB0

Protanomaly
B7AFB1

Deuteranomaly
C0ABB0

Tritanomaly
BFABB5

Monochromacy



Original Color
BEACB0

Achromatopsia
B2B2B2

Achromatomaly
B6B0B1

CSS Examples

Text

The CSS property to change the color of the text to Hex BEACB0 is called "color". The color property can be set on classes, ids or directly on the HTML element.

This example shows how text in the color #BEACB0 looks like.

```
.text, #text, p{  
    color:#BEACB0  
}
```

If you want to add a text shadow in that color use the text-shadow property, you can generate a text shadow directly with our [CSS Text Shadow Generator](#).

Here you see how black text with a 4 pixel #BEACB0 colored shadow looks like.

```
.shadow{ text-shadow: 4px 4px 2px #BEACB0
}
```

Border

The CSS property to change the border of an element to Hex BEACB0 is called "border". The border property can be set on classes, ids or directly on the HTML element.

This example shows the color as border, it can be applied via the CSS property "border" or "border-color".

```
.border, #border, table{ border:4px solid
#BEACB0 }
```

If only the border color should be changed use the property `border-color`.

```
.border{ border-color:#BEACB0 }
```

If you want to add a box shadow in that color use:

Here you see how a box with a 4 pixel #BEACB0 colored shadow looks like.

```
.boxshadow{ -moz-box-shadow:4px 4px 4px  
4px #BEACB0; -webkit-box-shadow:4px 4px  
4px 4px #BEACB0; box-shadow:4px 4px 4px  
4px #BEACB0 }
```

Background

The CSS property to change the background color of an element to Hex BEACB0 is called "background". The background property can be set on classes, ids or directly on the HTML element.

```
.background, #background, body{  
background:#BEACB0 }
```

If only the background color should be changed can be used:

```
.background{ background-color:#BEACB0 }
```

This example shows the color as background, it is applied via the CSS property "background".

To optimize and compress your CSS code, you can use our [online CSS compressor and optimizer](#) based on csstidy. If you want to create a linear or radial gradient as background or border, check our [CSS Gradient Generator](#).

Hey! You found this booklet interesting? Support Converting Colors with the new Membership Option!

The pro membership hides all ads, plus gives you double the colors in the color bucket, and more awesome pro features!

[Learn more, Memberships starting at \\$2.50/m!](#)

**Follow me
on Twitter!**

@ConvertingColor