

Converting Colors

Hex(BEADA7)

Have a look what the booklet for
Hex(BEADA7) contains.

Hex(BEADA7)	3
<i>Conversions</i>	4
<i>Details</i>	6
<i>Harmonies</i>	11
<i>Previews</i>	23
<i>Color Blindness Simulation</i>	26
<i>CSS Examples</i>	29

Color

Hex(BEADA7)

Conversions

Conversions Part 1

Format	Color
Hex	BEADA7
RGB	190, 173, 167
RGB Percent	75%, 68%, 65%
CMY	0.2549, 0.3216, 0.3451
CMYK	0.00, 0.09, 0.12, 0.25
HSL	16°, 15%, 70%
HSV	16°, 12%, 75%
XYZ	43.1538, 43.6243, 42.7051
YIQ	177.3990, 12.0580, 1.7380

Conversions

Conversions Part 2

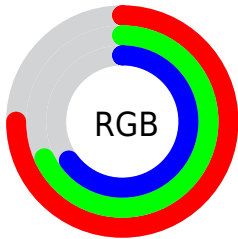
Format	Color
RYB	190, 175, 167
Decimal	12496295
CIELab	71.98, 5.08, 5.29
CIELCh	72, 7.334, 46.112
Yxy	43.6243, 0.3333, 0.3369
Android (android.graphics.Color)	4290686375 (0xFFBEADA7)
YUV	177.3990, -5.1267, 11.0511
Hunter-Lab	66.0487, 1.0402, 7.8990

Details

The Hex color **BEADA7** is a light color, and the websafe version is hex **999999**. A complement of this color would be **A7B8BE**, and the grayscale version is **B1B1B1**.

A 20% lighter version of the original color is **F6E4DE**, and **897973** is the 20% darker color. If you saturate the color by 10%, you get **BE9F94**, and if you desaturate by 10%, it is **BEBBBA**.

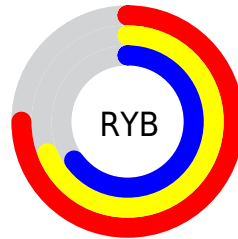
Distribution



Red (75%)

Green (68%)

Blue (65%)



Red (75%)

Yellow (69%)

Blue (65%)

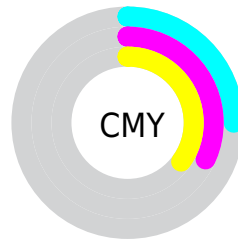


Cyan (0%)

Magenta (9%)

Yellow (12%)

Black (25%)



Cyan (25%)

Magenta (32%)

Yellow (35%)

Brightness & Saturation Gradients

These gradients show how the Hex color BEADA7 changes by changing the brightness by 10 percent. The first figure shows a shift by +10% for each color and the second figure -10%.

Similar to the brightness gradients but the following saturation gradients show a change of the Hex color BEADA7 by changing the saturation by 10% instead.

 BEADA7

 BEADA7

FFFFFF

 A3928D

 F6E4DE

 897973

 FFFFFB

 6F605B

 564843

 3F322D

 291D18

 150300

 000000

 BEADA7

 BEADA7

 BE9F94

 BEBBBA

 BE9181

 BEC9CD

 BE836E

 BED7E0

 BE755B

 BEE5F3

 BE6748

 BEF3FF

 BE5935

 BEFFFF

 BE4B22

 BE3D0F

 BE3200

Harmonies

Analogous

The Analogous color harmony consists of three colors that are next to each other on the color wheel.



BFACAD



BEADA7



B9AFA4

Triad

The Triadic color harmony groups three colors that are evenly spaced from another and form a triangle on the color wheel.



BEADA7



A4B4AD



AEB0BD

Complementary

The Complementary color scheme is a pair of colors which are on the opposite of each other on the color wheel.



BEADA7



A7B8BE

Split Complementary

Split-complementary colors differ from the complementary color scheme. The scheme consists of three colors, the original color and two neighbors of the complement color.



A6B2BD



BEADA7



A0B4B4

Square

The Square scheme is like the rectangle color scheme, but the four colors are evenly spaced on the color wheel.



BEADA7



AAB3A7



A1B4BA



B6AEBA

Rectangle

The Rectangle color scheme consists of four colors that form a rectangle on the color wheel.



BEADA7



B5B0A3



A1B4BA



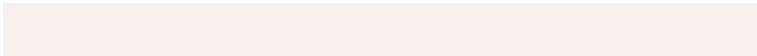
ABBOBE

Sweetspot

The Sweet Spot groups the original color and five complimentary colors.



BEADA7



F7F0ED



BEA7B8



7D7877



FCFCFC



7D7D7D

Same Dimension

The Same Dimension uses a secret algorithm to generate beautiful new colors.



BEADA7



F7DCD2



BEB8A7



5E5755



9E2900



1F0800

Inverse Universe

The Inverse Universe completely reimagines the original color for something new.



A7B8BE



D2EEF7



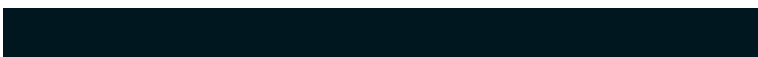
A7ADBE



555C5E



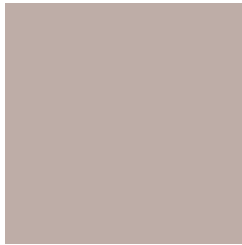
00759E



00171F

Previews

White Background



This preview shows how the Hex color BEADA7 looks on a white background.

Color Contrast Check

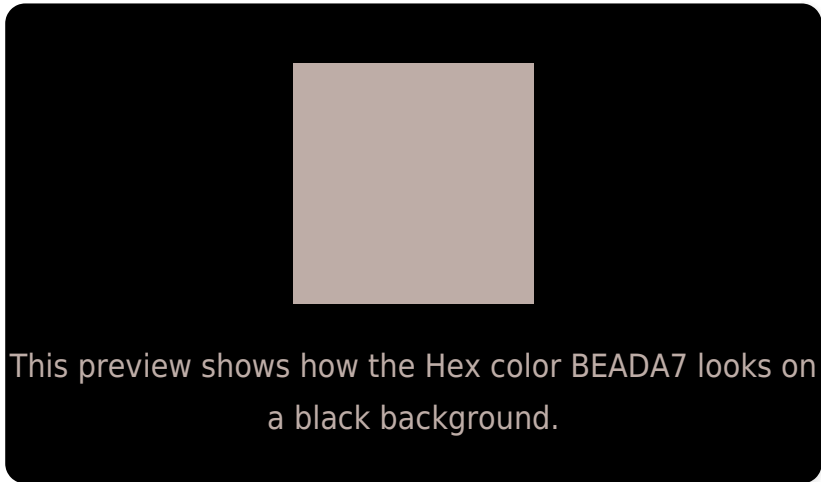
Large Text (above 18pt) WCAG AA × Fail

Any Text WCAG AA × Fail

Large Text (above 18pt) WCAG AAA × Fail

Any Text WCAG AAA × Fail

Black Background



Color Contrast Check

Large Text (above 18pt) WCAG AA ✓ Pass

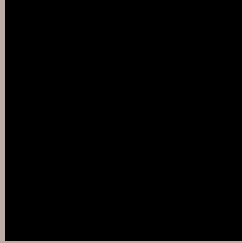
Any Text WCAG AA ✓ Pass

Large Text (above 18pt) WCAG AAA ✓ Pass

Any Text WCAG AAA ✓ Pass

If you want to check with other color combinations, try the [Color Contrast Checker](#).

Hex BEADA7 Background



This preview shows how black text looks on a background with the Hex color BEADA7.

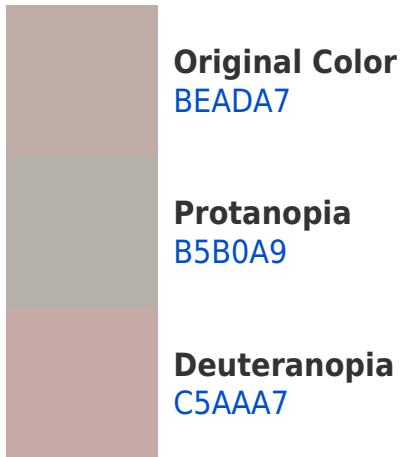


This preview shows how white text looks on a background with the Hex color BEADA7.

Color Blindness Simulation

Color vision deficiency is a very complex topic, and I could not describe the different causes any better than Wikipedia does, so if you want to learn more, you should check out their [article about color blindness](#).

Dichromacy



Trichromacy



Original Color
BEADA7

Protanomaly
B8AFA8

Deuteranomaly
C2ABA7

Tritanomaly
BFABB2

Monochromacy



Original Color
BEADA7

Achromatopsia
B1B1B1

Achromatomaly
B6B0AD

CSS Examples

Text

The CSS property to change the color of the text to Hex BEADA7 is called "color". The color property can be set on classes, ids or directly on the HTML element.

This example shows how text in the color #BEADA7 looks like.

```
.text, #text, p{  
    color:#BEADA7  
}
```

If you want to add a text shadow in that color use the text-shadow property, you can generate a text shadow directly with our [CSS Text Shadow Generator](#).

Here you see how black text with a 4 pixel #BEADA7 colored shadow looks like.

```
.shadow{ text-shadow: 4px 4px 2px #BEADA7  
}
```

Border

The CSS property to change the border of an element to Hex BEADA7 is called "border". The border property can be set on classes, ids or directly on the HTML element.

This example shows the color as border, it can be applied via the CSS property "border" or "border-color".

```
.border, #border, table{ border:4px solid  
#BEADA7 }
```

If only the border color should be changed use the property border-color.

```
.border{ border-color:#BEADA7 }
```

If you want to add a box shadow in that color use:

Here you see how a box with a 4 pixel #BEADA7 colored shadow looks like.

```
.boxshadow{ -moz-box-shadow:4px 4px 4px  
4px #BEADA7; -webkit-box-shadow:4px 4px  
4px 4px #BEADA7; box-shadow:4px 4px 4px  
4px #BEADA7 }
```

Background

The CSS property to change the background color of an element to Hex BEADA7 is called "background". The background property can be set on classes, ids or directly on the HTML element.

```
.background, #background, body{  
background:#BEADA7 }
```

If only the background color should be changed can be used:

```
.background{ background-color:#BEADA7 }
```

This example shows the color as background, it is applied via the CSS property "background".

To optimize and compress your CSS code, you can use our [online CSS compressor and optimizer](#) based on csstidy. If you want to create a linear or radial gradient as background or border, check our [CSS Gradient Generator](#).

Hey! You found this booklet interesting? Support Converting Colors with the new Membership Option!

The pro membership hides all ads, plus gives you double the colors in the color bucket, and more awesome pro features!

[Learn more, Memberships starting at \\$2.50/m!](#)

**Follow me
on Twitter!**

@ConvertingColor