

# Converting Colors

Hex(BF8080)

Have a look what the booklet for  
Hex(BF8080) contains.

<b>Hex(BF8080)</b> .....	3
<b><i>Conversions</i></b> .....	4
<b><i>Details</i></b> .....	6
<b><i>Harmonies</i></b> .....	11
<b><i>Previews</i></b> .....	23
<b><i>Color Blindness Simulation</i></b> .....	26
<b><i>CSS Examples</i></b> .....	29

# **Color**

**Hex(BF8080)**

# Conversions

## Conversions Part 1

Format	Color
Hex	BF8080
RGB	191, 128, 128
RGB Percent	75%, 50%, 50%
CMY	0.2510, 0.4980, 0.4980
CMYK	0.00, 0.33, 0.33, 0.25
HSL	0°, 33%, 63%
HSV	0°, 33%, 75%
XYZ	33.1013, 28.0732, 24.0961
YIQ	146.8370, 37.5480, 13.3560

# Conversions

## Conversions Part 2

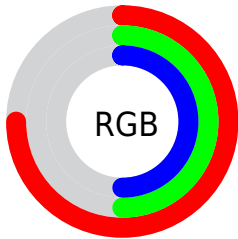
<b>Format</b>	<b>Color</b>
<b>RYB</b>	191, 128, 128
Decimal	12550272
CIELab	59.95, 24.39, 9.98
CIELCh	60, 26.353, 22.259
Yxy	28.0732, 0.3882, 0.3292
Android (android.graphics.Color)	4290740352 (0xFFBF8080)
YUV	146.8370, -9.2866, 38.7310
Hunter-Lab	52.9842, 18.7937, 10.1250

# Details

The Hex color **BF8080** is a light color, and the websafe version is hex **CC9999**. A complement of this color would be **80BFBF**, and the grayscale version is **939393**.

A 20% lighter version of the original color is **F9B5B5**, and **884E4F** is the 20% darker color. If you saturate the color by 10%, you get **BF6D6D**, and if you desaturate by 10%, it is **BF9393**.

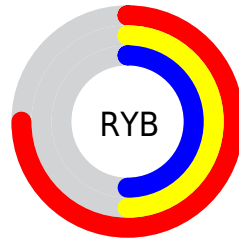
# Distribution



Red (75%)

Green (50%)

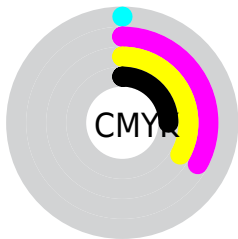
Blue (50%)



Red (75%)

Yellow (50%)

Blue (50%)

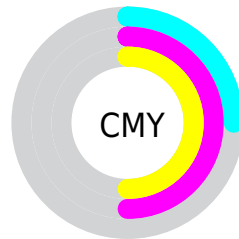


Cyan (0%)

Magenta (33%)

Yellow (33%)

Black (25%)



Cyan (25%)

Magenta (50%)

Yellow (50%)

# Brightness & Saturation Gradients

These gradients show how the Hex color BF8080 changes by changing the brightness by 10 percent. The first figure shows a shift by +10% for each color and the second figure -10%.

Similar to the brightness gradients but the following saturation gradients show a change of the Hex color BF8080 by changing the saturation by 10% instead.



 BF8080

 BF8080

FFFFFF

 A36767

 F9B5B5

 884E4F

 FFD1D0

 6D3638

 FFEEED

 532023

 3A090D

 260001

 000000

 BF8080

 BF8080

 BF6D6D

 BF9393

 BF5A5A

 BFA6A6

 BF4747

 BFB9B9

 BF3434

 BFC555

 BF2121

 BFE0E0

 BF0D0D

 BFF3F3

 BF0000

 BFFFFFF

# Harmonies

## Analogous

The Analogous color harmony consists of three colors that are next to each other on the color wheel.



BA8097



BF8080



B8856D

# Triad

The Triadic color harmony groups three colors that are evenly spaced from another and form a triangle on the color wheel.



BF8080



749A73



6994BE

# Complementary

The Complementary color scheme is a pair of colors which are on the opposite of each other on the color wheel.



BF8080



80BFBF

# Split Complementary

Split-complementary colors differ from the complementary color scheme. The scheme consists of three colors, the original color and two neighbors of the complement color.



4D9AB4



BF8080



5A9D89

# Square

The Square scheme is like the rectangle color scheme, but the four colors are evenly spaced on the color wheel.



BF8080



8F9465



489DA1



8C8DBB

# Rectangle

The Rectangle color scheme consists of four colors that form a rectangle on the color wheel.



BF8080



AD8A65



489DA1



5E97BC



# Sweetspot

The Sweet Spot groups the original color and five complimentary colors.



BF8080



F7DFDF



BF80BF



7D6E6E



FCFCFC



7D7D7D



# Same Dimension

The Same Dimension uses a secret algorithm to generate beautiful new colors.



BF8080



F79494



BFA080



5E5555



9E0000



1F0000



# Inverse Universe

The Inverse Universe completely reimagines the original color for something new.



80BFBF



94F7F7



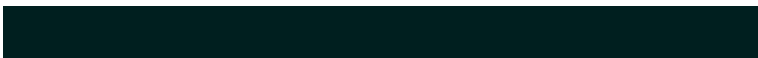
80A0BF



555E5E



009E9E

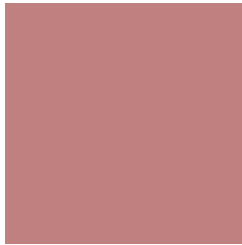


001F1F



# Previews

## White Background



This preview shows how the Hex color BF8080 looks on a white background.

## Color Contrast Check

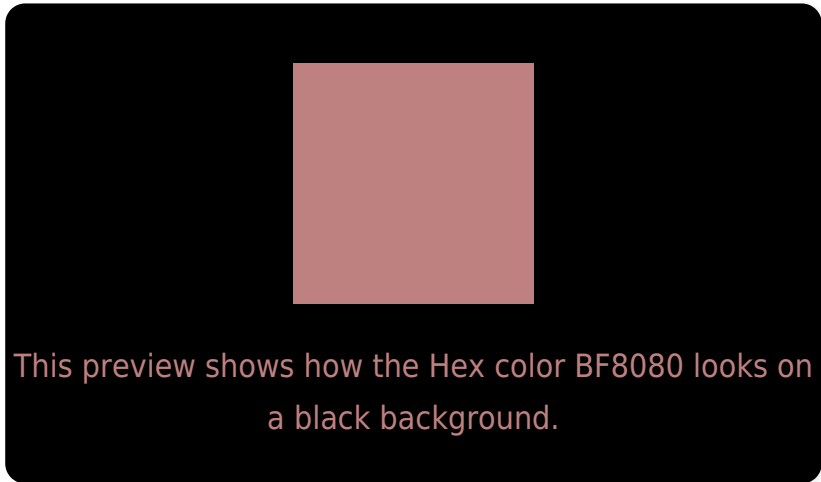
Large Text (above 18pt) WCAG AA ✓ Pass

Any Text WCAG AA ✗ Fail

Large Text (above 18pt) WCAG AAA ✗ Fail

Any Text WCAG AAA ✗ Fail

# Black Background



## Color Contrast Check

Large Text (above 18pt) WCAG AA ✓ Pass

Any Text WCAG AA ✓ Pass

Large Text (above 18pt) WCAG AAA ✓ Pass

Any Text WCAG AAA × Fail

If you want to check with other color combinations, try the [Color Contrast Checker](#).



## Hex BF8080 Background



This preview shows how black text looks on a background with the Hex color BF8080.

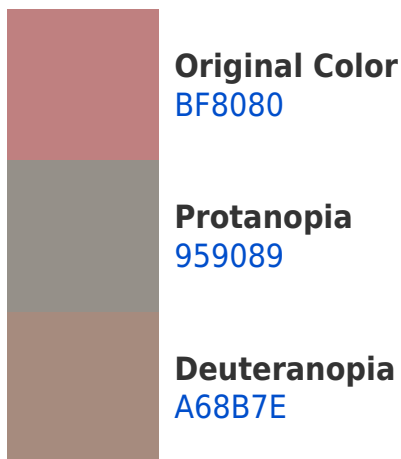


This preview shows how white text looks on a background with the Hex color BF8080.

# Color Blindness Simulation

Color vision deficiency is a very complex topic, and I could not describe the different causes any better than Wikipedia does, so if you want to learn more, you should check out their [article about color blindness](#).

## Dichromacy





**Tritanopia**  
C07F88

# Trichromacy



**Original Color**  
BF8080

**Protanomaly**  
A48A86

**Deuteranomaly**  
AF877F

**Tritanomaly**  
C07F85

# Monochromacy



**Original Color**  
BF8080

**Achromatopsia**  
939393

**Achromatomaly**  
A38C8C

# CSS Examples

## Text

The CSS property to change the color of the text to Hex BF8080 is called "color". The color property can be set on classes, ids or directly on the HTML element.

This example shows how text in the color #BF8080 looks like.

```
.text, #text, p{  
    color:#BF8080  
}
```

If you want to add a text shadow in that color use the text-shadow property, you can generate a text shadow directly with our [CSS Text Shadow Generator](#).

Here you see how black text with a 4 pixel #BF8080 colored shadow looks like.

```
.shadow{ text-shadow: 4px 4px 2px #BF8080
}
```

## Border

The CSS property to change the border of an element to Hex BF8080 is called "border". The border property can be set on classes, ids or directly on the HTML element.

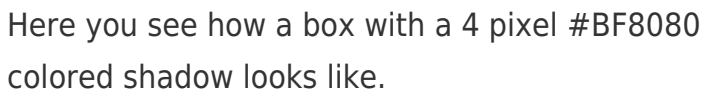
This example shows the color as border, it can be applied via the CSS property "border" or "border-color".

```
.border, #border, table{ border:4px solid
#BF8080 }
```

If only the border color should be changed use the property `border-color`.

```
.border{ border-color:#BF8080 }
```

If you want to add a box shadow in that color use:



Here you see how a box with a 4 pixel #BF8080 colored shadow looks like.

```
.boxshadow{ -moz-box-shadow:4px 4px 4px  
4px #BF8080; -webkit-box-shadow:4px 4px  
4px 4px #BF8080; box-shadow:4px 4px 4px  
4px #BF8080 }
```

# Background

The CSS property to change the background color of an element to Hex BF8080 is called "background". The background property can be set on classes, ids or directly on the HTML element.

```
.background, #background, body{  
background:#BF8080 }
```

If only the background color should be changed can be used:

```
.background{ background-color:#BF8080 }
```

This example shows the color as background, it is applied via the CSS property "background".

To optimize and compress your CSS code, you can use our [online CSS compressor and optimizer](#) based on csstidy. If you want to create a linear or radial gradient as background or border, check our [CSS Gradient Generator](#).



Hey! You found this booklet interesting? Support Converting Colors with the new Membership Option!

The pro membership hides all ads, plus gives you double the colors in the color bucket, and more awesome pro features!

**[Learn more, Memberships starting at \\$2.50/m!](#)**

**Follow me  
on Twitter!**

@ConvertingColor