

# Converting Colors

Hex(BF8459)

Have a look what the booklet for  
Hex(BF8459) contains.

<b>Hex(BF8459)</b> .....	3
<i><b>Conversions</b></i> .....	4
<i><b>Details</b></i> .....	6
<i><b>Harmonies</b></i> .....	11
<i><b>Previews</b></i> .....	23
<i><b>Color Blindness Simulation</b></i> .....	26
<i><b>CSS Examples</b></i> .....	29

**Color**

**Hex(BF8459)**

# Conversions

## Conversions Part 1

<b>Format</b>	<b>Color</b>
Hex	BF8459
RGB	191, 132, 89
RGB Percent	75%, 52%, 35%
CMY	0.2510, 0.4824, 0.6510
CMYK	0.00, 0.31, 0.53, 0.25
HSL	25°, 44%, 55%
HSV	25°, 53%, 75%
XYZ	31.5403, 28.3002, 13.2513
YIQ	144.7390, 48.9670, -0.8650

# Conversions

## Conversions Part 2

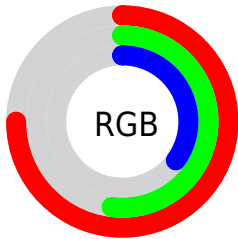
<b>Format</b>	<b>Color</b>
<b>RYB</b>	191, 163, 89
Decimal	12551257
CIELab	60.16, 17.89, 32.20
CIElCh	60, 36.833, 60.940
Yxy	28.3002, 0.4315, 0.3872
Android (android.graphics.Color)	4290741337 (0xFFBF8459)
YUV	144.7390, -27.4793, 40.5709
Hunter-Lab	53.1979, 12.7338, 22.4697

# Details

The Hex color **BF8459** is a dark color, and the websafe version is hex **CC9966**. A complement of this color would be **5994BF**, and the grayscale version is **919191**.

A 20% lighter version of the original color is **FAB98C**, and **86522A** is the 20% darker color. If you saturate the color by 10%, you get **BF7946**, and if you desaturate by 10%, it is **BF8F6C**.

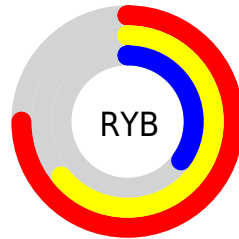
# Distribution



Red (75%)

Green (52%)

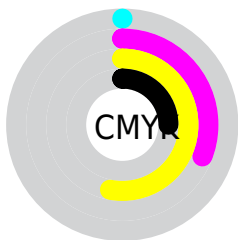
Blue (35%)



Red (75%)

Yellow (64%)

Blue (35%)

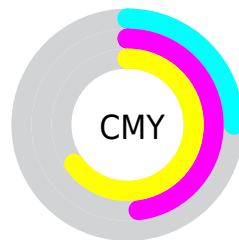


Cyan (0%)

Magenta (31%)

Yellow (53%)

Black (25%)



Cyan (25%)

Magenta (48%)

Yellow (65%)

# Brightness & Saturation Gradients

These gradients show how the Hex color BF8459 changes by changing the brightness by 10 percent. The first figure shows a shift by +10% for each color and the second figure -10%.

Similar to the brightness gradients but the following saturation gradients show a change of the Hex color BF8459 by changing the saturation by 10% instead.



 BF8459

 BF8459

FFFFFF

 A26B41

 FAB98C

 86522A

 FFD5A6

 6B3B14

 FFF1C2

 512500

 FFFFDE

 361000

 FFFFFA

 200001

 000000

 BF8459

 BF8459

 BF7946

 BF8F6C

 BF6E33

 BF9A7F

 BF6320

 BFA592

 BF580D

 BFB0A5

 BF5100

 BFB9B9

 BFC6CC

 BFD1DF

 BFDCF2

 BFE7FF

# Harmonies

## Analogous

The Analogous color harmony consists of three colors that are next to each other on the color wheel.



CE7A71



BF8459



A58F4F

# Triad

The Triadic color harmony groups three colors that are evenly spaced from another and form a triangle on the color wheel.



BF8459



26A291



9688C9

# Complementary

The Complementary color scheme is a pair of colors which are on the opposite of each other on the color wheel.



BF8459



5994BF

# Split Complementary

Split-complementary colors differ from the complementary color scheme. The scheme consists of three colors, the original color and two neighbors of the complement color.



6194D2



BF8459



00A1B1

# Square

The Square scheme is like the rectangle color scheme, but the four colors are evenly spaced on the color wheel.



BF8459



5B9F70



109DC9



BA7DB1

# Rectangle

The Rectangle color scheme consists of four colors that form a rectangle on the color wheel.



BF8459



8F9653



109DC9



868CCD

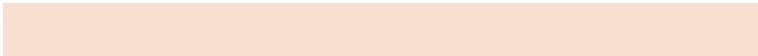


# Sweetspot

The Sweet Spot groups the original color and five complimentary colors.



BF8459



F7E0D0



BF5994



7D6F65



FCFCFC



7D7D7D



# Same Dimension

The Same Dimension uses a secret algorithm to generate beautiful new colors.



BF8459



F79C59



BFB759



5E5955



9E4300



1F0D00



# Inverse Universe

The Inverse Universe completely reimagines the original color for something new.



5994BF



59B5F7



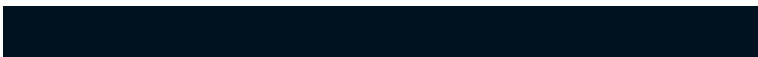
5961BF



555A5E



005B9E

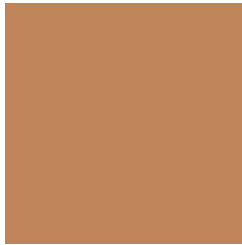


00121F



# Previews

## White Background



This preview shows how the Hex color BF8459 looks on a white background.

## Color Contrast Check

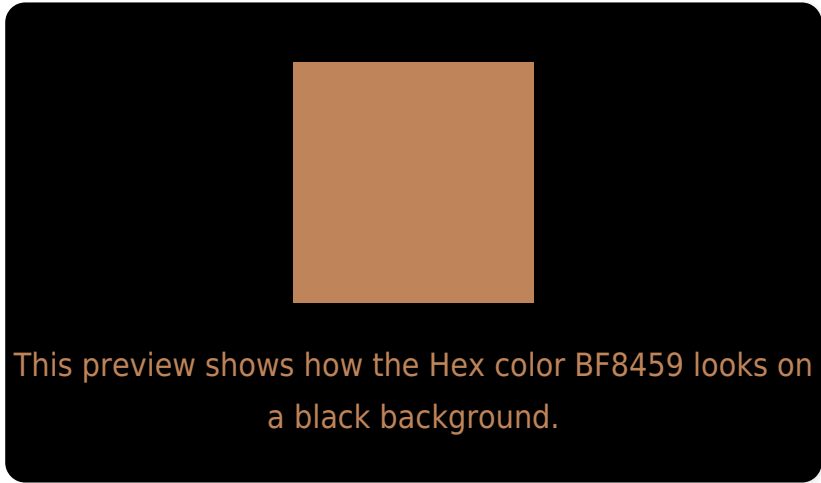
Large Text (above 18pt) WCAG AA ✓ Pass

Any Text WCAG AA × Fail

Large Text (above 18pt) WCAG AAA × Fail

Any Text WCAG AAA × Fail

# Black Background



## Color Contrast Check

Large Text (above 18pt) WCAG AA ✓ Pass

Any Text WCAG AA ✓ Pass

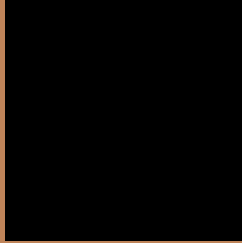
Large Text (above 18pt) WCAG AAA ✓ Pass

Any Text WCAG AAA × Fail

If you want to check with other color combinations, try the [Color Contrast Checker](#).



## Hex BF8459 Background



This preview shows how black text looks on a background with the Hex color BF8459.



This preview shows how white text looks on a background with the Hex color BF8459.

# Color Blindness Simulation

Color vision deficiency is a very complex topic, and I could not describe the different causes any better than Wikipedia does, so if you want to learn more, you should check out their [article about color blindness](#).

## Dichromacy



**Original Color**  
BF8459

**Protanopia**  
9E915E

**Deuteranopia**  
B08B58



**Tritanopia**  
C37E88

# Trichromacy



# Monochromacy



# CSS Examples

## Text

The CSS property to change the color of the text to Hex BF8459 is called "color". The color property can be set on classes, ids or directly on the HTML element.

This example shows how text in the color #BF8459 looks like.

```
.text, #text, p{  
    color:#BF8459  
}
```

If you want to add a text shadow in that color use the text-shadow property, you can generate a text shadow directly with our [CSS Text Shadow Generator](#).

Here you see how black text with a 4 pixel #BF8459 colored shadow looks like.

```
.shadow{ text-shadow: 4px 4px 2px #BF8459
}
```

## Border

The CSS property to change the border of an element to Hex BF8459 is called "border". The border property can be set on classes, ids or directly on the HTML element.

This example shows the color as border, it can be applied via the CSS property "border" or "border-color".

```
.border, #border, table{ border:4px solid
#BF8459 }
```

If only the border color should be changed use the property `border-color`.

```
.border{ border-color:#BF8459 }
```

If you want to add a box shadow in that color use:

Here you see how a box with a 4 pixel #BF8459 colored shadow looks like.

```
.boxshadow{ -moz-box-shadow:4px 4px 4px  
4px #BF8459; -webkit-box-shadow:4px 4px  
4px 4px #BF8459; box-shadow:4px 4px 4px  
4px #BF8459 }
```

# Background

The CSS property to change the background color of an element to Hex BF8459 is called "background". The background property can be set on classes, ids or directly on the HTML element.

```
.background, #background, body{  
background:#BF8459 }
```

If only the background color should be changed can be used:

```
.background{ background-color:#BF8459 }
```

This example shows the color as background, it is applied via the CSS property "background".

To optimize and compress your CSS code, you can use our [online CSS compressor and optimizer](#) based on csstidy. If you want to create a linear or radial gradient as background or border, check our [CSS Gradient Generator](#).



Hey! You found this booklet interesting? Support Converting Colors with the new Membership Option!

The pro membership hides all ads, plus gives you double the colors in the color bucket, and more awesome pro features!

**[Learn more, Memberships starting at \\$2.50/m!](#)**

**Follow me  
on Twitter!**

@ConvertingColor