

# Converting Colors

Hex(BF8E5B)

Have a look what the booklet for  
Hex(BF8E5B) contains.

<b>Hex(BF8E5B)</b> .....	3
<b><i>Conversions</i></b> .....	4
<b><i>Details</i></b> .....	6
<b><i>Harmonies</i></b> .....	11
<b><i>Previews</i></b> .....	23
<b><i>Color Blindness Simulation</i></b> .....	26
<b><i>CSS Examples</i></b> .....	29

# **Color**

**Hex(BF8E5B)**

# Conversions

## Conversions Part 1

Format	Color
Hex	BF8E5B
RGB	191, 142, 91
RGB Percent	75%, 56%, 36%
CMY	0.2510, 0.4431, 0.6431
CMYK	0.00, 0.26, 0.52, 0.25
HSL	31°, 44%, 55%
HSV	31°, 52%, 75%
XYZ	33.0472, 31.1777, 14.1737
YIQ	150.8370, 45.5750, -5.4730

# Conversions

## Conversions Part 2

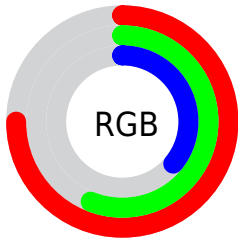
<b>Format</b>	<b>Color</b>
<a href="#">RYB</a>	<a href="#">187, 191, 91</a>
Decimal	<a href="#">12553819</a>
CIELab	<a href="#">62.66, 12.55, 34.26</a>
CIELCh	<a href="#">63, 36.481, 69.881</a>
Yxy	<a href="#">31.1777, 0.4215, 0.3977</a>
Android (android.graphics.Color)	<a href="#">4290743899</a> ( <a href="#">0xFFBF8E5B</a> )
YUV	<a href="#">150.8370, -29.4996, 35.2230</a>
Hunter-Lab	<a href="#">55.8370, 7.9307, 24.0357</a>

# Details

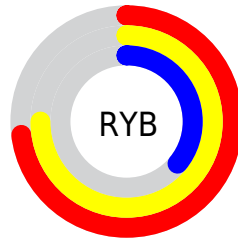
The Hex color **BF8E5B** is a dark color, and the websafe version is hex **CC9966**. A complement of this color would be **5B8CBF**, and the grayscale version is **979797**.

A 20% lighter version of the original color is **FAC48E**, and **875C2B** is the 20% darker color. If you saturate the color by 10%, you get **BF8548**, and if you desaturate by 10%, it is **BF976E**.

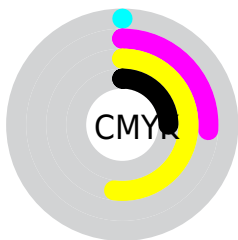
# Distribution



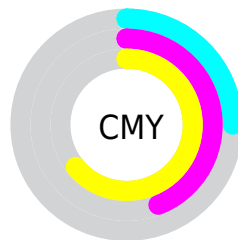
- Red (75%)
- Green (56%)
- Blue (36%)



- Red (73%)
- Yellow (75%)
- Blue (36%)



- Cyan (0%)
- Magenta (26%)
- Yellow (52%)
- Black (25%)



- Cyan (25%)
- Magenta (44%)
- Yellow (64%)

# Brightness & Saturation Gradients

These gradients show how the Hex color BF8E5B changes by changing the brightness by 10 percent. The first figure shows a shift by +10% for each color and the second figure -10%.

Similar to the brightness gradients but the following saturation gradients show a change of the Hex color BF8E5B by changing the saturation by 10% instead.



 BF8E5B

 BF8E5B

FFFFFF

 A37443

 FAC48E

 875C2B

 FFE0A9

 6C4414

 FFFCC4

 512E00

 FFFFFE0

 381900

FFFFFFD

 200000

 000000

 BF8E5B

 BF8E5B

 BF8548

 BF976E

 BF7B35

 BFA181

 BF7222

 BF9A94

 BF690F

 BFB3A7

 BF6100

 BFBDBB

 BFC6CE

 BFD0E1

 BFD9F4

 BFE2FF

# Harmonies

## Analogous

The Analogous color harmony consists of three colors that are next to each other on the color wheel.



D28370



BF8E5B



A29957

# Triad

The Triadic color harmony groups three colors that are evenly spaced from another and form a triangle on the color wheel.



BF8E5B



1EA9A2



A98BC9

# Complementary

The Complementary color scheme is a pair of colors which are on the opposite of each other on the color wheel.



BF8E5B



5B8CBF

# Split Complementary

Split-complementary colors differ from the complementary color scheme. The scheme consists of three colors, the original color and two neighbors of the complement color.



7997D7



BF8E5B



00A7C0

# Square

The Square scheme is like the rectangle color scheme, but the four colors are evenly spaced on the color wheel.



BF8E5B



55A780



3CA1D4



C981AF

# Rectangle

The Rectangle color scheme consists of four colors that form a rectangle on the color wheel.



BF8E5B



8B9F5E



3CA1D4



9B8FD0

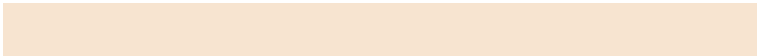


# Sweetspot

The Sweet Spot groups the original color and five complimentary colors.



BF8E5B



F7E4D0



BF5B8D



7D7165



FCFCFC



7D7D7D



# Same Dimension

The Same Dimension uses a secret algorithm to generate beautiful new colors.



BF8E5B



F7AB5C



BFBF5B



5E5A55



9E5100



1F1000



# Inverse Universe

The Inverse Universe completely reimagines the original color for something new.



5B8CBF



5CA8F7



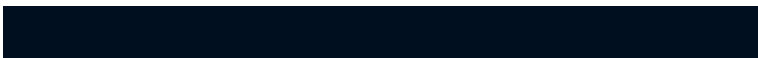
5B5BBF



555A5E



004D9E

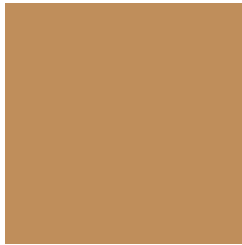


000F1F



# Previews

## White Background



This preview shows how the Hex color BF8E5B looks on a white background.

## Color Contrast Check

Large Text (above 18pt) WCAG AA × Fail

Any Text WCAG AA × Fail

Large Text (above 18pt) WCAG AAA × Fail

Any Text WCAG AAA × Fail

# Black Background



## Color Contrast Check

Large Text (above 18pt) WCAG AA ✓ Pass

Any Text WCAG AA ✓ Pass

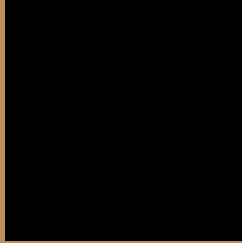
Large Text (above 18pt) WCAG AAA ✓ Pass

Any Text WCAG AAA ✓ Pass

If you want to check with other color combinations, try the [Color Contrast Checker](#).



## Hex BF8E5B Background



This preview shows how black text looks on a background with the Hex color BF8E5B.



This preview shows how white text looks on a background with the Hex color BF8E5B.

# Color Blindness Simulation

Color vision deficiency is a very complex topic, and I could not describe the different causes any better than Wikipedia does, so if you want to learn more, you should check out their [article about color blindness](#).

## Dichromacy



**Original Color**  
BF8E5B

**Protanopia**  
A6985F

**Deuteranopia**  
B8915A



**Tritanopia**  
C48792

# Trichromacy



**Original Color**  
BF8E5B

**Protanomaly**  
AF945E

**Deuteranomaly**  
BB905A

**Tritanomaly**  
C28A7E

# Monochromacy



**Original Color**  
BF8E5B

**Achromatopsia**  
979797

**Achromatomaly**  
A69481

# CSS Examples

## Text

The CSS property to change the color of the text to Hex BF8E5B is called "color". The color property can be set on classes, ids or directly on the HTML element.

This example shows how text in the color #BF8E5B looks like.

```
.text, #text, p{  
    color:#BF8E5B  
}
```

If you want to add a text shadow in that color use the text-shadow property, you can generate a text shadow directly with our [CSS Text Shadow Generator](#).

Here you see how black text with a 4 pixel #BF8E5B colored shadow looks like.

```
.shadow{ text-shadow: 4px 4px 2px #BF8E5B
}
```

## Border

The CSS property to change the border of an element to Hex BF8E5B is called "border". The border property can be set on classes, ids or directly on the HTML element.

This example shows the color as border, it can be applied via the CSS property "border" or "border-color".

```
.border, #border, table{ border:4px solid
#BF8E5B }
```

If only the border color should be changed use the property `border-color`.

```
.border{ border-color:#BF8E5B }
```

If you want to add a box shadow in that color use:

Here you see how a box with a 4 pixel #BF8E5B colored shadow looks like.

```
.boxshadow{ -moz-box-shadow:4px 4px 4px  
4px #BF8E5B; -webkit-box-shadow:4px 4px  
4px 4px #BF8E5B; box-shadow:4px 4px 4px  
4px #BF8E5B }
```

# Background

The CSS property to change the background color of an element to Hex BF8E5B is called "background". The background property can be set on classes, ids or directly on the HTML element.

```
.background, #background, body{  
background:#BF8E5B }
```

If only the background color should be changed can be used:

```
.background{ background-color:#BF8E5B }
```

This example shows the color as background, it is applied via the CSS property "background".

To optimize and compress your CSS code, you can use our [online CSS compressor and optimizer](#) based on csstidy. If you want to create a linear or radial gradient as background or border, check our [CSS Gradient Generator](#).



Hey! You found this booklet interesting? Support Converting Colors with the new Membership Option!

The pro membership hides all ads, plus gives you double the colors in the color bucket, and more awesome pro features!

**[Learn more, Memberships starting at \\$2.50/m!](#)**

**Follow me  
on Twitter!**

@ConvertingColor