

Converting Colors

Hex(BF8E8C)

Have a look what the booklet for
Hex(BF8E8C) contains.

Hex(BF8E8C)	3
<i>Conversions</i>	4
<i>Details</i>	6
<i>Harmonies</i>	11
<i>Previews</i>	23
<i>Color Blindness Simulation</i>	26
<i>CSS Examples</i>	29

Color

Hex(BF8E8C)

Conversions

Conversions Part 1

Format	Color
Hex	BF8E8C
RGB	191, 142, 140
RGB Percent	75%, 56%, 55%
CMY	0.2510, 0.4431, 0.4510
CMYK	0.00, 0.26, 0.27, 0.25
HSL	2°, 28%, 65%
HSV	2°, 27%, 75%
XYZ	35.8925, 32.3158, 29.1568
YIQ	156.4230, 29.8460, 9.7660

Conversions

Conversions Part 2

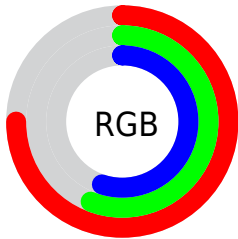
Format	Color
R_{YB}	191, 142, 140
Decimal	12553868
CIE _{Lab}	63.60, 18.29, 8.34
CIE _{LCh}	64, 20.097, 24.505
Yxy	32.3158, 0.3686, 0.3319
Android (android.graphics.Color)	4290743948 (0xFFBF8E8C)
YUV	156.4230, -8.0965, 30.3240
Hunter-Lab	56.8470, 13.2204, 9.3831

Details

The Hex color **BF8E8C** is a light color, and the websafe version is hex **CC9999**. A complement of this color would be **8CBDBF**, and the grayscale version is **9C9C9C**.

A 20% lighter version of the original color is **F8C4C2**, and **885B5A** is the 20% darker color. If you saturate the color by 10%, you get **BF7C79**, and if you desaturate by 10%, it is **BFA09F**.

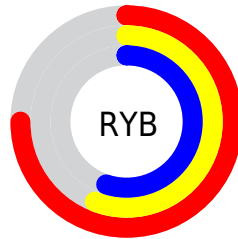
Distribution



Red (75%)

Green (56%)

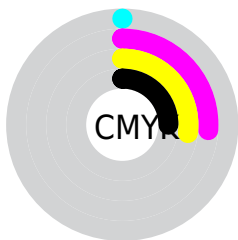
Blue (55%)



Red (75%)

Yellow (56%)

Blue (55%)

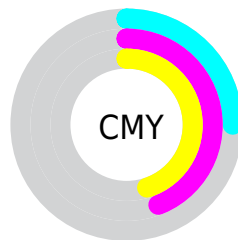


Cyan (0%)

Magenta (26%)

Yellow (27%)

Black (25%)



Cyan (25%)

Magenta (44%)

Yellow (45%)

Brightness & Saturation Gradients

These gradients show how the Hex color BF8E8C changes by changing the brightness by 10 percent. The first figure shows a shift by +10% for each color and the second figure -10%.

Similar to the brightness gradients but the following saturation gradients show a change of the Hex color BF8E8C by changing the saturation by 10% instead.



BF8E8C



BF8E8C

FFFFFF



A37473



F8C4C2



885B5A



FFE0DD



6E4443



FFFDFA



552D2D



3C1718



270000



000000



BF8E8C



BF8E8C



BF7C79



BFA09F

 BF6966

 BFB3B2

 BF5753

 BFC5C5

 BF4540

 BFD7D8

 BF322D

 BFEAEC

 BF2019

 BFFCFF

 BF0E06

 BFFFFFF

 BF0700

Harmonies

Analogous

The Analogous color harmony consists of three colors that are next to each other on the color wheel.



BC8E9E



BF8E8C



B9927E

Triad

The Triadic color harmony groups three colors that are evenly spaced from another and form a triangle on the color wheel.



BF8E8C



83A285



819DBD

Complementary

The Complementary color scheme is a pair of colors which are on the opposite of each other on the color wheel.



BF8E8C



8CBDBF

Split Complementary

Split-complementary colors differ from the complementary color scheme. The scheme consists of three colors, the original color and two neighbors of the complement color.



6EA1B7



BF8E8C



71A496

Square

The Square scheme is like the rectangle color scheme, but the four colors are evenly spaced on the color wheel.



BF8E8C



989D79



68A4A8



9997BA

Rectangle

The Rectangle color scheme consists of four colors that form a rectangle on the color wheel.



BF8E8C



B09678



68A4A8



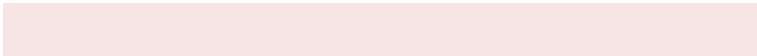
799EBC

Sweetspot

The Sweet Spot groups the original color and five complimentary colors.



BF8E8C



F7E4E4



BF8CBD



7D7170



FCFCFC



7D7D7D

Same Dimension

The Same Dimension uses a secret algorithm to generate beautiful new colors.



BF8E8C



F7ABA8



BFA78C



5E5555



9E0600



1F0100

Inverse Universe

The Inverse Universe completely reimagines the original color for something new.



8CBDBF



A8F4F7



8CA4BF



555E5E



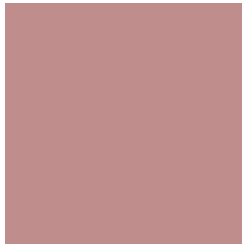
00989E



001D1F

Previews

White Background



This preview shows how the Hex color BF8E8C looks on a white background.

Color Contrast Check

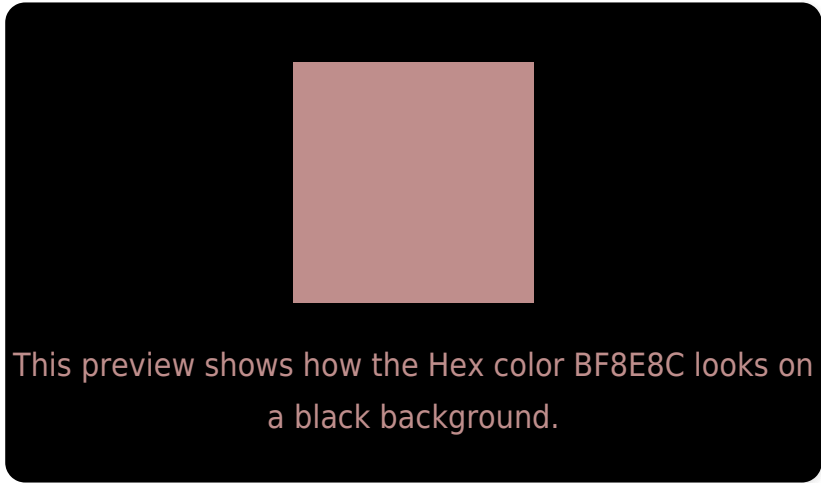
Large Text (above 18pt) WCAG AA × Fail

Any Text WCAG AA × Fail

Large Text (above 18pt) WCAG AAA × Fail

Any Text WCAG AAA × Fail

Black Background



Color Contrast Check

Large Text (above 18pt) WCAG AA ✓ Pass

Any Text WCAG AA ✓ Pass

Large Text (above 18pt) WCAG AAA ✓ Pass

Any Text WCAG AAA ✓ Pass

If you want to check with other color combinations, try the [Color Contrast Checker](#).

Hex BF8E8C Background



This preview shows how black text looks on a background with the Hex color BF8E8C.



This preview shows how white text looks on a background with the Hex color BF8E8C.

Color Blindness Simulation

Color vision deficiency is a very complex topic, and I could not describe the different causes any better than Wikipedia does, so if you want to learn more, you should check out their [article about color blindness](#).

Dichromacy



Original Color
BF8E8C

Protanopia
9F9A92

Deuteranopia
AF958B



Tritanopia
C08C97

Trichromacy



Original Color
BF8E8C

Protanomaly
AB9690

Deuteranomaly
B5928B

Tritanomaly
C08D93

Monochromacy



Original Color
BF8E8C

Achromatopsia
9C9C9C

Achromatomaly
A99796

CSS Examples

Text

The CSS property to change the color of the text to Hex BF8E8C is called "color". The color property can be set on classes, ids or directly on the HTML element.

This example shows how text in the color #BF8E8C looks like.

```
.text, #text, p{  
    color:#BF8E8C  
}
```

If you want to add a text shadow in that color use the text-shadow property, you can generate a text shadow directly with our [CSS Text Shadow Generator](#).

Here you see how black text with a 4 pixel #BF8E8C colored shadow looks like.

```
.shadow{ text-shadow: 4px 4px 2px #BF8E8C
}
```

Border

The CSS property to change the border of an element to Hex BF8E8C is called "border". The border property can be set on classes, ids or directly on the HTML element.

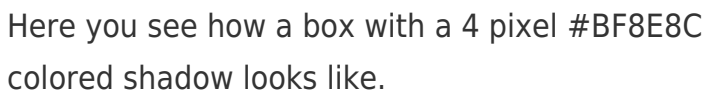
This example shows the color as border, it can be applied via the CSS property "border" or "border-color".

```
.border, #border, table{ border:4px solid
#BF8E8C }
```

If only the border color should be changed use the property `border-color`.

```
.border{ border-color:#BF8E8C }
```

If you want to add a box shadow in that color use:



Here you see how a box with a 4 pixel #BF8E8C colored shadow looks like.

```
.boxshadow{ -moz-box-shadow:4px 4px 4px  
4px #BF8E8C; -webkit-box-shadow:4px 4px  
4px 4px #BF8E8C; box-shadow:4px 4px 4px  
4px #BF8E8C }
```

Background

The CSS property to change the background color of an element to Hex BF8E8C is called "background". The background property can be set on classes, ids or directly on the HTML element.

```
.background, #background, body{  
background:#BF8E8C }
```

If only the background color should be changed can be used:

```
.background{ background-color:#BF8E8C }
```

This example shows the color as background, it is applied via the CSS property "background".

To optimize and compress your CSS code, you can use our [online CSS compressor and optimizer](#) based on csstidy. If you want to create a linear or radial gradient as background or border, check our [CSS Gradient Generator](#).

Hey! You found this booklet interesting? Support Converting Colors with the new Membership Option!

The pro membership hides all ads, plus gives you double the colors in the color bucket, and more awesome pro features!

[Learn more, Memberships starting at \\$2.50/m!](#)

**Follow me
on Twitter!**

@ConvertingColor