

Converting Colors

Hex(BF9088)

Have a look what the booklet for
Hex(BF9088) contains.

Hex(BF9088)	3
<i>Conversions</i>	4
<i>Details</i>	6
<i>Harmonies</i>	11
<i>Previews</i>	23
<i>Color Blindness Simulation</i>	26
<i>CSS Examples</i>	29

Color

Hex(BF9088)

Conversions

Conversions Part 1

Format	Color
Hex	BF9088
RGB	191, 144, 136
RGB Percent	75%, 56%, 53%
CMY	0.2510, 0.4353, 0.4667
CMYK	0.00, 0.25, 0.29, 0.25
HSL	9°, 30%, 64%
HSV	9°, 29%, 75%
XYZ	35.9031, 32.8005, 27.7314
YIQ	157.1410, 30.5800, 7.4760

Conversions

Conversions Part 2

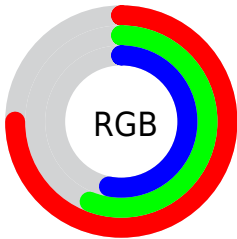
Format	Color
RYB	191, 145, 136
Decimal	12554376
CIELab	64.00, 16.62, 11.15
CIELCh	64, 20.012, 33.875
Yxy	32.8005, 0.3723, 0.3401
Android (android.graphics.Color)	4290744456 (0xFFBF9088)
YUV	157.1410, -10.4225, 29.6943
Hunter-Lab	57.2717, 11.6744, 11.3815

Details

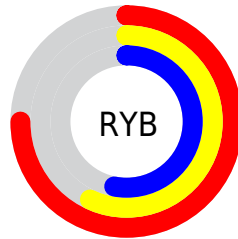
The Hex color **BF9088** is a light color, and the websafe version is hex **CC9999**. A complement of this color would be **88B7BF**, and the grayscale version is **9D9D9D**.

A 20% lighter version of the original color is **F8C6BD**, and **885D56** is the 20% darker color. If you saturate the color by 10%, you get **BF8075**, and if you desaturate by 10%, it is **BFA09B**.

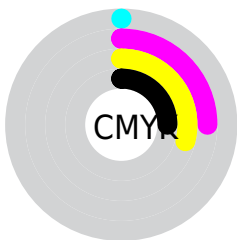
Distribution



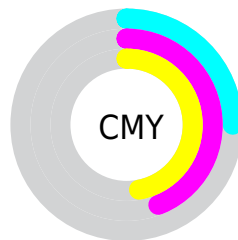
- Red (75%)
- Green (56%)
- Blue (53%)



- Red (75%)
- Yellow (57%)
- Blue (53%)



- Cyan (0%)
- Magenta (25%)
- Yellow (29%)
- Black (25%)



- Cyan (25%)
- Magenta (44%)
- Yellow (47%)

Brightness & Saturation Gradients

These gradients show how the Hex color BF9088 changes by changing the brightness by 10 percent. The first figure shows a shift by +10% for each color and the second figure -10%.

Similar to the brightness gradients but the following saturation gradients show a change of the Hex color BF9088 by changing the saturation by 10% instead.

 BF9088

 BF9088

FFFFFF

 A3766F

 F8C6BD

 885D56

 FFE2D9

 6E463F

 FFFFF6

 552F29

 3C1915

 270100

 000000

 BF9088

 BF9088

 BF8075

 BFA09B

 BF6F62

 BFB1AE

 BF5F4F

 BFC1C1

 BF4F3C

 BFD1D4

 BF3E29

 BFE2E7

 BF2E15

 BFF2FB

 BF1E02

 BFFFFFF

 BF1C00

Harmonies

Analogous

The Analogous color harmony consists of three colors that are next to each other on the color wheel.



BF8E99



BF9088



B6957C

Triad

The Triadic color harmony groups three colors that are evenly spaced from another and form a triangle on the color wheel.



BF9088



7EA48B



899CBE

Complementary

The Complementary color scheme is a pair of colors which are on the opposite of each other on the color wheel.



BF9088



88B7BF

Split Complementary

Split-complementary colors differ from the complementary color scheme. The scheme consists of three colors, the original color and two neighbors of the complement color.



74A1BB



BF9088



6EA59D

Square

The Square scheme is like the rectangle color scheme, but the four colors are evenly spaced on the color wheel.



BF9088



93A07D



69A4AE



A196B9

Rectangle

The Rectangle color scheme consists of four colors that form a rectangle on the color wheel.



BF9088



AC9978



69A4AE



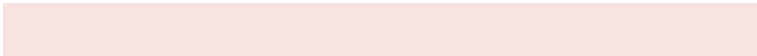
819EBE

Sweetspot

The Sweet Spot groups the original color and five complimentary colors.



BF9088



F7E4E1



BF88B8



7D716F



FCFCFC



7D7D7D

Same Dimension

The Same Dimension uses a secret algorithm to generate beautiful new colors.



BF9088



F7ADA1



BFAB88



5E5655



9E1700



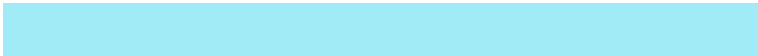
1F0400

Inverse Universe

The Inverse Universe completely reimagines the original color for something new.



88B7BF



A1EBF7



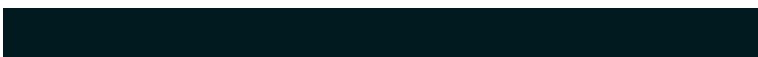
889CBF



555D5E



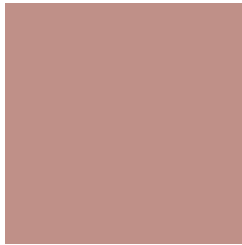
00879E



001A1F

Previews

White Background



This preview shows how the Hex color BF9088 looks on a white background.

Color Contrast Check

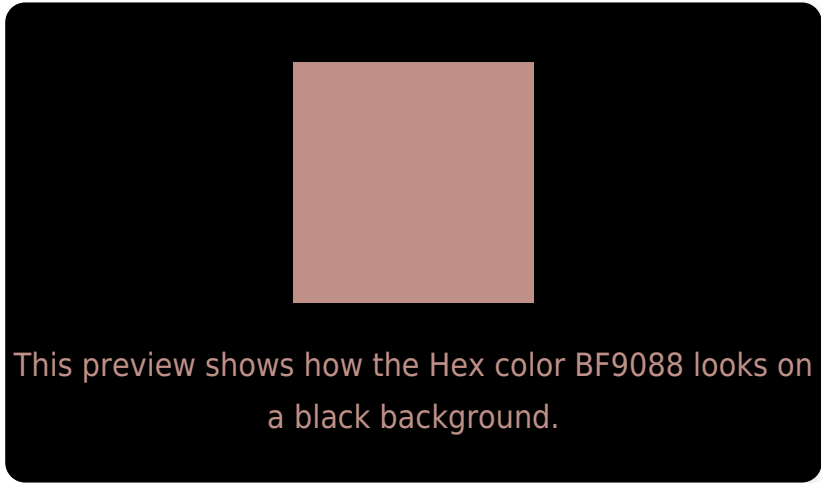
Large Text (above 18pt) WCAG AA × Fail

Any Text WCAG AA × Fail

Large Text (above 18pt) WCAG AAA × Fail

Any Text WCAG AAA × Fail

Black Background



Color Contrast Check

Large Text (above 18pt) WCAG AA ✓ Pass

Any Text WCAG AA ✓ Pass

Large Text (above 18pt) WCAG AAA ✓ Pass

Any Text WCAG AAA ✓ Pass

If you want to check with other color combinations, try the [Color Contrast Checker](#).

Hex BF9088 Background



This preview shows how black text looks on a background with the Hex color BF9088.



This preview shows how white text looks on a background with the Hex color BF9088.

Color Blindness Simulation

Color vision deficiency is a very complex topic, and I could not describe the different causes any better than Wikipedia does, so if you want to learn more, you should check out their [article about color blindness](#).

Dichromacy





Tritanopia
C18E98

Trichromacy



Original Color
BF9088

Protanomaly
AC978C

Deuteranomaly
B79487

Tritanomaly
C08F92

Monochromacy



Original Color
BF9088

Achromatopsia
9D9D9D

Achromatomaly
A99895

CSS Examples

Text

The CSS property to change the color of the text to Hex BF9088 is called "color". The color property can be set on classes, ids or directly on the HTML element.

This example shows how text in the color #BF9088 looks like.

```
.text, #text, p{  
    color:#BF9088  
}
```

If you want to add a text shadow in that color use the text-shadow property, you can generate a text shadow directly with our [CSS Text Shadow Generator](#).

Here you see how black text with a 4 pixel #BF9088 colored shadow looks like.

```
.shadow{ text-shadow: 4px 4px 2px #BF9088
}
```

Border

The CSS property to change the border of an element to Hex BF9088 is called "border". The border property can be set on classes, ids or directly on the HTML element.

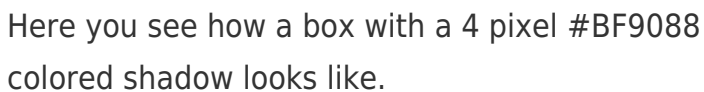
This example shows the color as border, it can be applied via the CSS property "border" or "border-color".

```
.border, #border, table{ border:4px solid
#BF9088 }
```

If only the border color should be changed use the property `border-color`.

```
.border{ border-color:#BF9088 }
```

If you want to add a box shadow in that color use:



Here you see how a box with a 4 pixel #BF9088 colored shadow looks like.

```
.boxshadow{ -moz-box-shadow:4px 4px 4px  
4px #BF9088; -webkit-box-shadow:4px 4px  
4px 4px #BF9088; box-shadow:4px 4px 4px  
4px #BF9088 }
```

Background

The CSS property to change the background color of an element to Hex BF9088 is called "background". The background property can be set on classes, ids or directly on the HTML element.

```
.background, #background, body{  
background:#BF9088 }
```

If only the background color should be changed can be used:

```
.background{ background-color:#BF9088 }
```

This example shows the color as background, it is applied via the CSS property "background".

To optimize and compress your CSS code, you can use our [online CSS compressor and optimizer](#) based on csstidy. If you want to create a linear or radial gradient as background or border, check our [CSS Gradient Generator](#).

Hey! You found this booklet interesting? Support Converting Colors with the new Membership Option!

The pro membership hides all ads, plus gives you double the colors in the color bucket, and more awesome pro features!

[Learn more, Memberships starting at \\$2.50/m!](#)

**Follow me
on Twitter!**

@ConvertingColor