

Converting Colors

Hex(BF9868)

Have a look what the booklet for
Hex(BF9868) contains.

Hex(BF9868)	3
<i>Conversions</i>	4
<i>Details</i>	6
<i>Harmonies</i>	11
<i>Previews</i>	23
<i>Color Blindness Simulation</i>	26
<i>CSS Examples</i>	29

Color

Hex(BF9868)

Conversions

Conversions Part 1

Format	Color
Hex	BF9868
RGB	191, 152, 104
RGB Percent	75%, 60%, 41%
CMY	0.2510, 0.4039, 0.5922
CMYK	0.00, 0.20, 0.46, 0.25
HSL	33°, 40%, 58%
HSV	33°, 46%, 75%
XYZ	35.2128, 34.5323, 17.9062
YIQ	158.1890, 38.6520, -6.6600

Conversions

Conversions Part 2

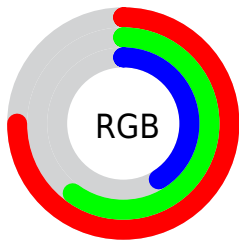
Format	Color
RYB	175, 191, 104
Decimal	12556392
CIELab	65.38, 8.32, 30.74
CIELCh	65, 31.846, 74.858
Yxy	34.5323, 0.4017, 0.3940
Android (android.graphics.Color)	4290746472 (0xFFBF9868)
YUV	158.1890, -26.7152, 28.7752
Hunter-Lab	58.7642, 4.1237, 23.0685

Details

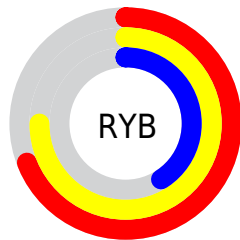
The Hex color **BF9868** is a dark color, and the websafe version is hex **CC9966**. A complement of this color would be **688FBF**, and the grayscale version is **9E9E9E**.

A 20% lighter version of the original color is **F9CE9C**, and **886538** is the 20% darker color. If you saturate the color by 10%, you get **BF8F55**, and if you desaturate by 10%, it is **BFA17B**.

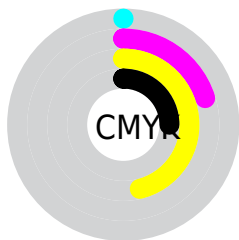
Distribution



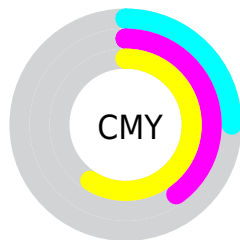
- Red (75%)
- Green (60%)
- Blue (41%)



- Red (69%)
- Yellow (75%)
- Blue (41%)



- Cyan (0%)
- Magenta (20%)
- Yellow (46%)
- Black (25%)



- Cyan (25%)
- Magenta (40%)
- Yellow (59%)

Brightness & Saturation Gradients

These gradients show how the Hex color BF9868 changes by changing the brightness by 10 percent. The first figure shows a shift by +10% for each color and the second figure -10%.

Similar to the brightness gradients but the following saturation gradients show a change of the Hex color BF9868 by changing the saturation by 10% instead.

 BF9868

 BF9868

FFFFFF

 A37E4F

 F9CE9C

 886538

 FFEAB7

 6D4D21

 FFFFD3

 53370A

 FFFFEF

 3A2100

 220C00

 000000

 BF9868

 BF9868

 BF8F55

 BFA17B

 BF8742

 BFA98E

 BF7E2F

 BFB2A1

 BF761C

 BFBAB4

 BF6D09

 BFC3C7

 BF6900

 BFCBDB

 BFD4EE

 BFDCFF

 BFE5FF

Harmonies

Analogous

The Analogous color harmony consists of three colors that are next to each other on the color wheel.



D18F78



BF9868



A4A267

Triad

The Triadic color harmony groups three colors that are evenly spaced from another and form a triangle on the color wheel.



BF9868



42AEAC



B492C7

Complementary

The Complementary color scheme is a pair of colors which are on the opposite of each other on the color wheel.



BF9868



688FBF

Split Complementary

Split-complementary colors differ from the complementary color scheme. The scheme consists of three colors, the original color and two neighbors of the complement color.



8E9DD6



BF9868



3EACC6

Square

The Square scheme is like the rectangle color scheme, but the four colors are evenly spaced on the color wheel.



BF9868



62AD8F



61A6D5



CE8BAE

Rectangle

The Rectangle color scheme consists of four colors that form a rectangle on the color wheel.



BF9868



8FA76F



61A6D5



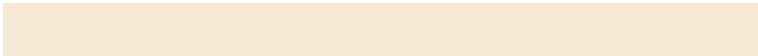
A996CE

Sweetspot

The Sweet Spot groups the original color and five complimentary colors.



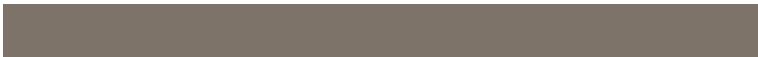
BF9868



F7E8D5



BF688F



7D7368



FCFCFC



7D7D7D

Same Dimension

The Same Dimension uses a secret algorithm to generate beautiful new colors.



BF9868



F7BA6F



BBBF68



5E5A55



9E5700



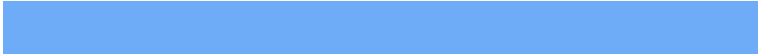
1F1100

Inverse Universe

The Inverse Universe completely reimagines the original color for something new.



688FBF



6FACF7



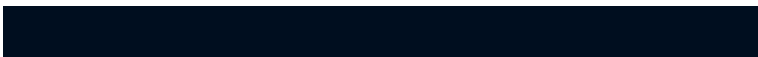
6C68BF



55595E



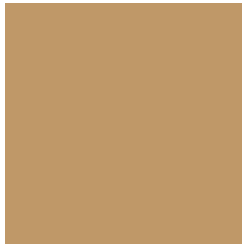
00479E



000E1F

Previews

White Background



This preview shows how the Hex color BF9868 looks on a white background.

Color Contrast Check

Large Text (above 18pt) WCAG AA × Fail

Any Text WCAG AA × Fail

Large Text (above 18pt) WCAG AAA × Fail

Any Text WCAG AAA × Fail

Black Background



Color Contrast Check

Large Text (above 18pt) WCAG AA ✓ Pass

Any Text WCAG AA ✓ Pass

Large Text (above 18pt) WCAG AAA ✓ Pass

Any Text WCAG AAA ✓ Pass

If you want to check with other color combinations, try the [Color Contrast Checker](#).

Hex BF9868 Background



This preview shows how black text looks on a background with the Hex color BF9868.




This preview shows how white text looks on a background with the Hex color BF9868.

Color Blindness Simulation

Color vision deficiency is a very complex topic, and I could not describe the different causes any better than Wikipedia does, so if you want to learn more, you should check out their [article about color blindness](#).

Dichromacy





Tritanopia
C4919D

Trichromacy



Monochromacy



CSS Examples

Text

The CSS property to change the color of the text to Hex BF9868 is called "color". The color property can be set on classes, ids or directly on the HTML element.

This example shows how text in the color #BF9868 looks like.

```
.text, #text, p{  
    color:#BF9868  
}
```

If you want to add a text shadow in that color use the text-shadow property, you can generate a text shadow directly with our [CSS Text Shadow Generator](#).

Here you see how black text with a 4 pixel #BF9868 colored shadow looks like.

```
.shadow{ text-shadow: 4px 4px 2px #BF9868  
}
```

Border

The CSS property to change the border of an element to Hex BF9868 is called "border". The border property can be set on classes, ids or directly on the HTML element.

This example shows the color as border, it can be applied via the CSS property "border" or "border-color".

```
.border, #border, table{ border:4px solid  
#BF9868 }
```

If only the border color should be changed use the property `border-color`.

```
.border{ border-color:#BF9868 }
```

If you want to add a box shadow in that color use:

Here you see how a box with a 4 pixel #BF9868 colored shadow looks like.

```
.boxshadow{ -moz-box-shadow:4px 4px 4px  
4px #BF9868; -webkit-box-shadow:4px 4px  
4px 4px #BF9868; box-shadow:4px 4px 4px  
4px #BF9868 }
```

Background

The CSS property to change the background color of an element to Hex BF9868 is called "background". The background property can be set on classes, ids or directly on the HTML element.

```
.background, #background, body{  
background:#BF9868 }
```

If only the background color should be changed can be used:

```
.background{ background-color:#BF9868 }
```

This example shows the color as background, it is applied via the CSS property "background".

To optimize and compress your CSS code, you can use our [online CSS compressor and optimizer](#) based on csstidy. If you want to create a linear or radial gradient as background or border, check our [CSS Gradient Generator](#).

Hey! You found this booklet interesting? Support Converting Colors with the new Membership Option!

The pro membership hides all ads, plus gives you double the colors in the color bucket, and more awesome pro features!

[Learn more, Memberships starting at \\$2.50/m!](#)

**Follow me
on Twitter!**

@ConvertingColor