

Converting Colors

Hex(BF9890)

Have a look what the booklet for
Hex(BF9890) contains.

Hex(BF9890)	3
<i>Conversions</i>	4
<i>Details</i>	6
<i>Harmonies</i>	11
<i>Previews</i>	23
<i>Color Blindness Simulation</i>	26
<i>CSS Examples</i>	29

Color

Hex(BF9890)

Conversions

Conversions Part 1

Format	Color
Hex	BF9890
RGB	191, 152, 144
RGB Percent	75%, 60%, 56%
CMY	0.2510, 0.4039, 0.4353
CMYK	0.00, 0.20, 0.25, 0.25
HSL	10°, 27%, 66%
HSV	10°, 25%, 75%
XYZ	37.7481, 35.5465, 31.2572
YIQ	162.7490, 25.8120, 5.7800

Conversions

Conversions Part 2

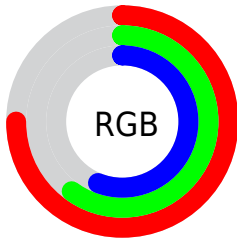
Format	Color
RYB	191, 154, 144
Decimal	12556432
CIELab	66.17, 13.34, 9.74
CIELCh	66, 16.516, 36.142
Yxy	35.5465, 0.3610, 0.3400
Android (android.graphics.Color)	4290746512 (0xFFBF9890)
YUV	162.7490, -9.2433, 24.7761
Hunter-Lab	59.6208, 8.6784, 10.6509

Details

The Hex color **BF9890** is a light color, and the websafe version is hex **CC9999**. A complement of this color would be **90B7BF**, and the grayscale version is **A3A3A3**.

A 20% lighter version of the original color is **F8CEC6**, and **89655E** is the 20% darker color. If you saturate the color by 10%, you get **BF887D**, and if you desaturate by 10%, it is **BFA8A3**.

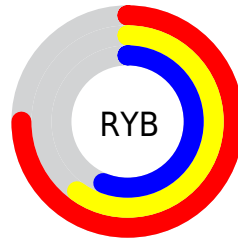
Distribution



Red (75%)

Green (60%)

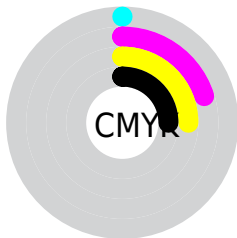
Blue (56%)



Red (75%)

Yellow (60%)

Blue (56%)

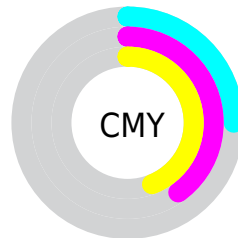


Cyan (0%)

Magenta (20%)

Yellow (25%)

Black (25%)



Cyan (25%)

Magenta (40%)

Yellow (44%)

Brightness & Saturation Gradients

These gradients show how the Hex color BF9890 changes by changing the brightness by 10 percent. The first figure shows a shift by +10% for each color and the second figure -10%.

Similar to the brightness gradients but the following saturation gradients show a change of the Hex color BF9890 by changing the saturation by 10% instead.

 BF9890

 BF9890

FFFFFF

 A47E76

 F8CEC6

 89655E

 FFEBE2

 6F4D46

FFFFFFE

 563630

 3D201B

 280B00

 000000

 BF9890

 BF9890

 BF887D

 BFA8A3

 BF786A

 BFB8B6

 BF6857

 BFC8C9

 BF5944

 BFD7DC

 BF4931

 BFE7EF

 BF391D

 BFF7FF

 BF290A

 BFFFFFF

 BF2100

Harmonies

Analogous

The Analogous color harmony consists of three colors that are next to each other on the color wheel.



BF979E



BF9890



B79C86

Triad

The Triadic color harmony groups three colors that are evenly spaced from another and form a triangle on the color wheel.



BF9890



88A894



94A1BE

Complementary

The Complementary color scheme is a pair of colors which are on the opposite of each other on the color wheel.



BF9890



90B7BF

Split Complementary

Split-complementary colors differ from the complementary color scheme. The scheme consists of three colors, the original color and two neighbors of the complement color.



83A6BB



BF9890



7CAA3

Square

The Square scheme is like the rectangle color scheme, but the four colors are evenly spaced on the color wheel.



BF9890



99A589



7AA9B2



A79CB9

Rectangle

The Rectangle color scheme consists of four colors that form a rectangle on the color wheel.



BF9890



AE9F83



7AA9B2



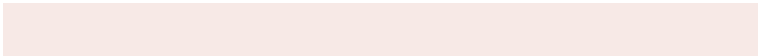
8EA3BE

Sweetspot

The Sweet Spot groups the original color and five complimentary colors.



BF9890



F7E9E6



BF90B7



7D7573



FCFCFC



7D7D7D

Same Dimension

The Same Dimension uses a secret algorithm to generate beautiful new colors.



BF9890



F7BAAD



BFAF90



5E5755



9E1B00



1F0500

Inverse Universe

The Inverse Universe completely reimagines the original color for something new.



90B7BF



ADEBF7



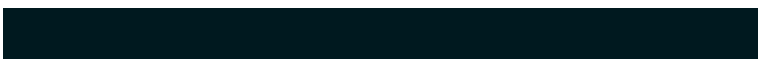
90A0BF



555D5E



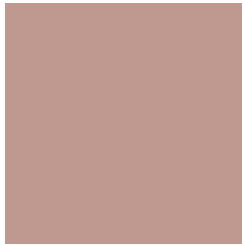
00839E



00191F

Previews

White Background



This preview shows how the Hex color BF9890 looks on a white background.

Color Contrast Check

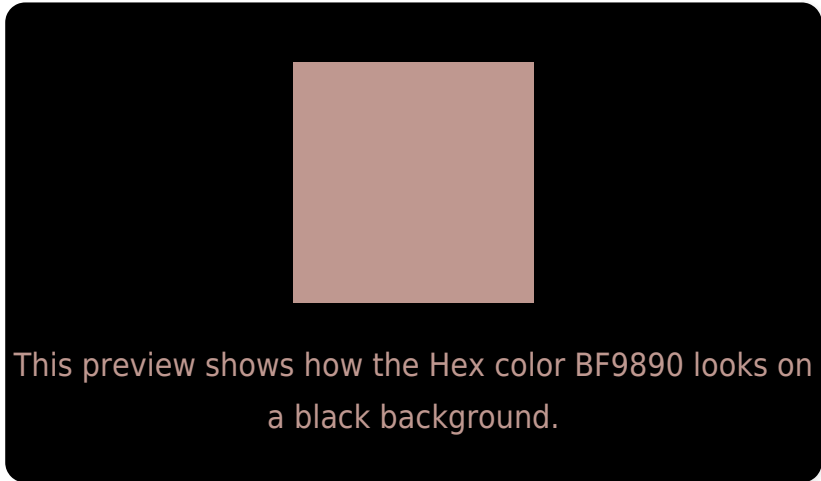
Large Text (above 18pt) WCAG AA × Fail

Any Text WCAG AA × Fail

Large Text (above 18pt) WCAG AAA × Fail

Any Text WCAG AAA × Fail

Black Background



Color Contrast Check

Large Text (above 18pt) WCAG AA ✓ Pass

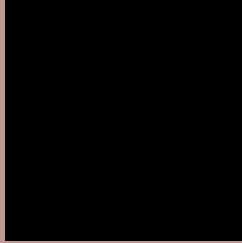
Any Text WCAG AA ✓ Pass

Large Text (above 18pt) WCAG AAA ✓ Pass

Any Text WCAG AAA ✓ Pass

If you want to check with other color combinations, try the [Color Contrast Checker](#).

Hex BF9890 Background



This preview shows how black text looks on a background with the Hex color BF9890.

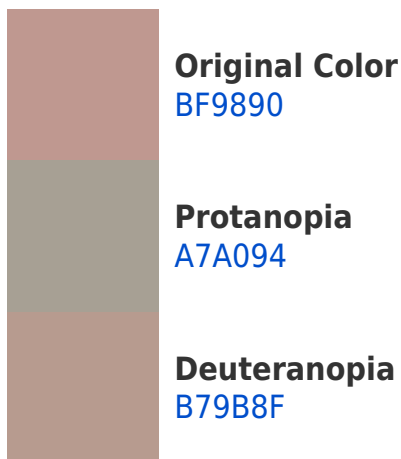


This preview shows how white text looks on a background with the Hex color BF9890.

Color Blindness Simulation

Color vision deficiency is a very complex topic, and I could not describe the different causes any better than Wikipedia does, so if you want to learn more, you should check out their [article about color blindness](#).

Dichromacy





Tritanopia
C195A1

Trichromacy



Original Color
BF9890

Protanomaly
B09D93

Deuteranomaly
BA9A8F

Tritanomaly
C0969B

Monochromacy



Original Color
BF9890

Achromatopsia
A3A3A3

Achromatomaly
AD9F9C

CSS Examples

Text

The CSS property to change the color of the text to Hex BF9890 is called "color". The color property can be set on classes, ids or directly on the HTML element.

This example shows how text in the color #BF9890 looks like.

```
.text, #text, p{  
    color:#BF9890  
}
```

If you want to add a text shadow in that color use the text-shadow property, you can generate a text shadow directly with our [CSS Text Shadow Generator](#).

Here you see how black text with a 4 pixel #BF9890 colored shadow looks like.

```
.shadow{ text-shadow: 4px 4px 2px #BF9890
}
```

Border

The CSS property to change the border of an element to Hex BF9890 is called "border". The border property can be set on classes, ids or directly on the HTML element.

This example shows the color as border, it can be applied via the CSS property "border" or "border-color".

```
.border, #border, table{ border:4px solid
#BF9890 }
```

If only the border color should be changed use the property `border-color`.

```
.border{ border-color:#BF9890 }
```

If you want to add a box shadow in that color use:

Here you see how a box with a 4 pixel #BF9890 colored shadow looks like.

```
.boxshadow{ -moz-box-shadow:4px 4px 4px  
4px #BF9890; -webkit-box-shadow:4px 4px  
4px 4px #BF9890; box-shadow:4px 4px 4px  
4px #BF9890 }
```

Background

The CSS property to change the background color of an element to Hex BF9890 is called "background". The background property can be set on classes, ids or directly on the HTML element.

```
.background, #background, body{  
background:#BF9890 }
```

If only the background color should be changed can be used:

```
.background{ background-color:#BF9890 }
```

This example shows the color as background, it is applied via the CSS property "background".

To optimize and compress your CSS code, you can use our [online CSS compressor and optimizer](#) based on csstidy. If you want to create a linear or radial gradient as background or border, check our [CSS Gradient Generator](#).

Hey! You found this booklet interesting? Support Converting Colors with the new Membership Option!

The pro membership hides all ads, plus gives you double the colors in the color bucket, and more awesome pro features!

[Learn more, Memberships starting at \\$2.50/m!](#)

**Follow me
on Twitter!**

@ConvertingColor