

Converting Colors

Hex(BF9F8F)

Have a look what the booklet for
Hex(BF9F8F) contains.

| | |
|--|----|
| Hex(BF9F8F) | 3 |
| <i>Conversions</i> | 4 |
| <i>Details</i> | 6 |
| <i>Harmonies</i> | 11 |
| <i>Previews</i> | 23 |
| <i>Color Blindness Simulation</i> | 26 |
| <i>CSS Examples</i> | 29 |

Color

Hex(BF9F8F)

Conversions

Conversions Part 1

| Format | Color |
|-------------|---------------------------|
| Hex | BF9F8F |
| RGB | 191, 159, 143 |
| RGB Percent | 75%, 62%, 56% |
| CMY | 0.2510, 0.3765, 0.4392 |
| CMYK | 0.00, 0.17, 0.25, 0.25 |
| HSL | 20°, 27%, 65% |
| HSV | 20°, 25%, 75% |
| XYZ | 38.8419, 37.8558, 31.2463 |
| YIQ | 166.7440, 24.2080, 1.8080 |

Conversions

Conversions Part 2

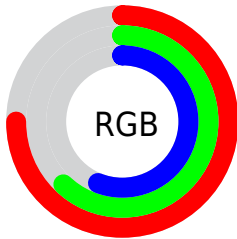
| Format | Color |
|-------------------------------------|--------------------------------|
| R _Y B | 191, 167, 143 |
| Decimal | 12558223 |
| CIE Lab | 67.91, 9.34, 12.76 |
| CIE LCh | 68, 15.815, 53.786 |
| Yxy | 37.8558, 0.3598, 0.3507 |
| Android (android.graphics.Color) | 4290748303 (0xFFBF9F8F) |
| YUV | 166.7440, -11.7058, 21.2725 |
| Hunter-Lab | 61.5271, 5.0143, 12.9587 |

Details

The Hex color **BF9F8F** is a light color, and the websafe version is hex **CC9999**. A complement of this color would be **8FAFBF**, and the grayscale version is **A7A7A7**.

A 20% lighter version of the original color is **F8D6C5**, and **896C5D** is the 20% darker color. If you saturate the color by 10%, you get **BF927C**, and if you desaturate by 10%, it is **BFACA2**.

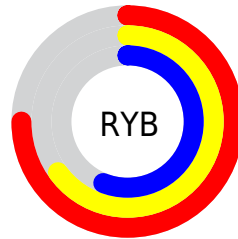
Distribution



Red (75%)

Green (62%)

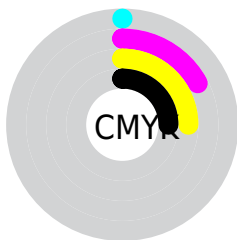
Blue (56%)



Red (75%)

Yellow (65%)

Blue (56%)

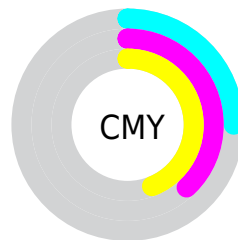


Cyan (0%)

Magenta (17%)

Yellow (25%)

Black (25%)



Cyan (25%)

Magenta (38%)

Yellow (44%)

Brightness & Saturation Gradients

These gradients show how the Hex color BF9F8F changes by changing the brightness by 10 percent. The first figure shows a shift by +10% for each color and the second figure -10%.

Similar to the brightness gradients but the following saturation gradients show a change of the Hex color BF9F8F by changing the saturation by 10% instead.

 BF9F8F

 BF9F8F

FFFFFF

 A48575

 F8D6C5

 896C5D

 FFF2E1

 6F5345

FFFFFFD

 563C2F

 3E261A

 281200

 010000

 000000

 BF9F8F

 BF9F8F

 BF927C

 BFACA2

 BF8669

 BFB8B5

 BF7956

 BFC5C8

 BF6C43

 BFD2DB

 BF5F2F

 BFDFEF

 BF531C

 BFE8FF

 BF4609

 BFF8FF

 BF4000

 BFFFFFF

Harmonies

Analogous

The Analogous color harmony consists of three colors that are next to each other on the color wheel.



C49C9B



BF9F8F



B4A389

Triad

The Triadic color harmony groups three colors that are evenly spaced from another and form a triangle on the color wheel.



BF9F8F



86AEA2



A4A3BF

Complementary

The Complementary color scheme is a pair of colors which are on the opposite of each other on the color wheel.



BF9F8F



8FAFBF

Split Complementary

Split-complementary colors differ from the complementary color scheme. The scheme consists of three colors, the original color and two neighbors of the complement color.



92A8C1



BF9F8F



80AEB0

Square

The Square scheme is like the rectangle color scheme, but the four colors are evenly spaced on the color wheel.



BF9F8F



94AC94



84ABBC



B59EB7

Rectangle

The Rectangle color scheme consists of four colors that form a rectangle on the color wheel.



BF9F8F



AAA78A



84ABBC



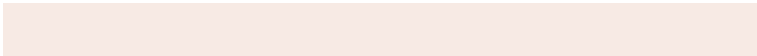
9EA4C1

Sweetspot

The Sweet Spot groups the original color and five complimentary colors.



BF9F8F



F7EAE4



BF8FAF



7D7570



FCFCFC



7D7D7D

Same Dimension

The Same Dimension uses a secret algorithm to generate beautiful new colors.



BF9F8F



F7C6AD



BFB78F



5E5855



9E3500



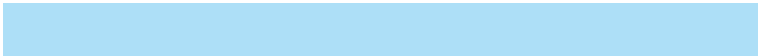
1F0A00

Inverse Universe

The Inverse Universe completely reimagines the original color for something new.



8FAFBF



ADDF7



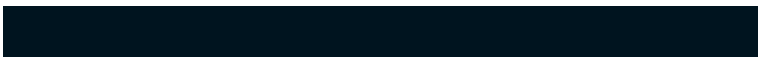
8F97BF



555B5E



00699E



00141F

Previews

White Background



This preview shows how the Hex color BF9F8F looks on a white background.

Color Contrast Check

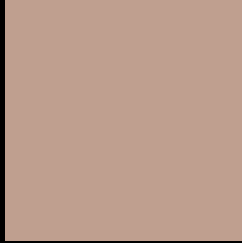
Large Text (above 18pt) WCAG AA × Fail

Any Text WCAG AA × Fail

Large Text (above 18pt) WCAG AAA × Fail

Any Text WCAG AAA × Fail

Black Background



This preview shows how the Hex color BF9F8F looks on a black background.

Color Contrast Check

Large Text (above 18pt) WCAG AA ✓ Pass

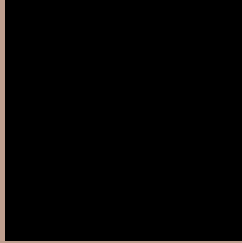
Any Text WCAG AA ✓ Pass

Large Text (above 18pt) WCAG AAA ✓ Pass

Any Text WCAG AAA ✓ Pass

If you want to check with other color combinations, try the [Color Contrast Checker](#).

Hex BF9F8F Background



This preview shows how black text looks on a background with the Hex color BF9F8F.



This preview shows how white text looks on a background with the Hex color BF9F8F.

Color Blindness Simulation

Color vision deficiency is a very complex topic, and I could not describe the different causes any better than Wikipedia does, so if you want to learn more, you should check out their [article about color blindness](#).

Dichromacy



Original Color
BF9F8F

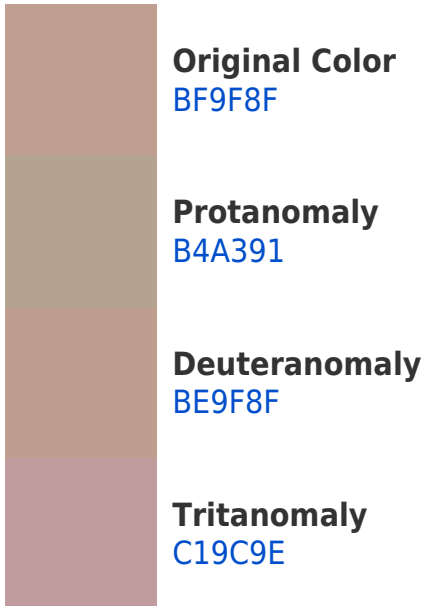
Protanopia
ADA592

Deuteranopia
BE9F8F



Tritanopia
C29BA7

Trichromacy



Monochromacy



CSS Examples

Text

The CSS property to change the color of the text to Hex BF9F8F is called "color". The color property can be set on classes, ids or directly on the HTML element.

This example shows how text in the color #BF9F8F looks like.

```
.text, #text, p{  
    color:#BF9F8F  
}
```

If you want to add a text shadow in that color use the text-shadow property, you can generate a text shadow directly with our [CSS Text Shadow Generator](#).

Here you see how black text with a 4 pixel #BF9F8F colored shadow looks like.

```
.shadow{ text-shadow: 4px 4px 2px #BF9F8F
}
```

Border

The CSS property to change the border of an element to Hex BF9F8F is called "border". The border property can be set on classes, ids or directly on the HTML element.

This example shows the color as border, it can be applied via the CSS property "border" or "border-color".

```
.border, #border, table{ border:4px solid
#BF9F8F }
```

If only the border color should be changed use the property border-color.

```
.border{ border-color:#BF9F8F }
```

If you want to add a box shadow in that color use:

Here you see how a box with a 4 pixel #BF9F8F colored shadow looks like.

```
.boxshadow{ -moz-box-shadow:4px 4px 4px  
4px #BF9F8F; -webkit-box-shadow:4px 4px  
4px 4px #BF9F8F; box-shadow:4px 4px 4px  
4px #BF9F8F }
```

Background

The CSS property to change the background color of an element to Hex BF9F8F is called "background". The background property can be set on classes, ids or directly on the HTML element.

```
.background, #background, body{  
background:#BF9F8F }
```

If only the background color should be changed can be used:

```
.background{ background-color:#BF9F8F }
```

This example shows the color as background, it is applied via the CSS property "background".

To optimize and compress your CSS code, you can use our [online CSS compressor and optimizer](#) based on csstidy. If you want to create a linear or radial gradient as background or border, check our [CSS Gradient Generator](#).

Hey! You found this booklet interesting? Support Converting Colors with the new Membership Option!

The pro membership hides all ads, plus gives you double the colors in the color bucket, and more awesome pro features!

[Learn more, Memberships starting at \\$2.50/m!](#)

**Follow me
on Twitter!**

@ConvertingColor