

Converting Colors

Hex(BFA0A3)

Have a look what the booklet for
Hex(BFA0A3) contains.

Hex(BFA0A3)	3
<i>Conversions</i>	4
<i>Details</i>	6
<i>Harmonies</i>	11
<i>Previews</i>	23
<i>Color Blindness Simulation</i>	26
<i>CSS Examples</i>	29

Color

Hex(BFA0A3)

Conversions

Conversions Part 1

Format	Color
Hex	BFA0A3
RGB	191, 160, 163
RGB Percent	75%, 63%, 64%
CMY	0.2510, 0.3725, 0.3608
CMYK	0.00, 0.16, 0.15, 0.25
HSL	354°, 19%, 69%
HSV	354°, 16%, 75%
XYZ	40.6675, 38.8623, 40.0081
YIQ	169.6110, 17.5130, 7.5050

Conversions

Conversions Part 2

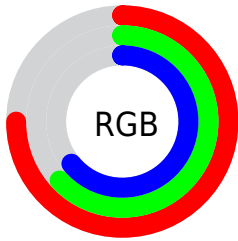
Format	Color
RYB	191, 160, 163
Decimal	12558499
CIELab	68.65, 11.89, 2.70
CIElCh	69, 12.193, 12.800
Yxy	38.8623, 0.3402, 0.3251
Android (android.graphics.Color)	4290748579 (0xFFBFA0A3)
YUV	169.6110, -3.2592, 18.7582
Hunter-Lab	62.3397, 7.3508, 5.5868

Details

The Hex color **BFA0A3** is a light color, and the websafe version is hex **CC9999**. A complement of this color would be **A0BFBC**, and the grayscale version is **AAAAAA**.

A 20% lighter version of the original color is **F8D7DA**, and **896C6F** is the 20% darker color. If you saturate the color by 10%, you get **BF8D92**, and if you desaturate by 10%, it is **BFB3B4**.

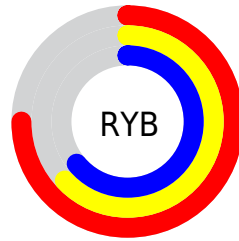
Distribution



Red (75%)

Green (63%)

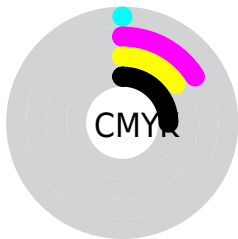
Blue (64%)



Red (75%)

Yellow (63%)

Blue (64%)

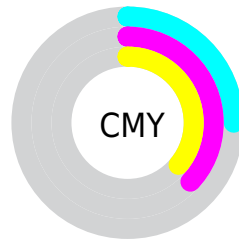


Cyan (0%)

Magenta (16%)

Yellow (15%)

Black (25%)



Cyan (25%)

Magenta (37%)

Yellow (36%)

Brightness & Saturation Gradients

These gradients show how the Hex color BFA0A3 changes by changing the brightness by 10 percent. The first figure shows a shift by +10% for each color and the second figure -10%.

Similar to the brightness gradients but the following saturation gradients show a change of the Hex color BFA0A3 by changing the saturation by 10% instead.



BFA0A3



BFA0A3

FFFFFF



A48689



F8D7DA



896C6F



FFF3F6



705457



573D40



3F272A



281216



0F0000



000000



BFA0A3



BFA0A3

 BF8D92

 BFB3B4

 BF7A80

 BFC6C6

 BF676F

 BFD9D7

 BF545E

 BFEC E8

 BF414D

 BFFFF9

 BF2D3B

 BFFFFFF

 BF1A2A

 BF0719

 BF0012

Harmonies

Analogous

The Analogous color harmony consists of three colors that are next to each other on the color wheel.



BAA1AE



BFA0A3



BEA299

Triad

The Triadic color harmony groups three colors that are evenly spaced from another and form a triangle on the color wheel.



BFA0A3



9FAB97



95AABC

Complementary

The Complementary color scheme is a pair of colors which are on the opposite of each other on the color wheel.



BFA0A3



A0BFBC

Split Complementary

Split-complementary colors differ from the complementary color scheme. The scheme consists of three colors, the original color and two neighbors of the complement color.



8DADB6



BFA0A3



93AEA1

Square

The Square scheme is like the rectangle color scheme, but the four colors are evenly spaced on the color wheel.



BFA0A3



ABA892



8CAEAC



A2A7BD

Rectangle

The Rectangle color scheme consists of four colors that form a rectangle on the color wheel.



BFA0A3



B9A394



8CAEAC



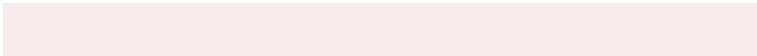
91ABBB

Sweetspot

The Sweet Spot groups the original color and five complimentary colors.



BFA0A3



F7EBEC



BCA0BF



7D7576



FCFCFC



7D7D7D

Same Dimension

The Same Dimension uses a secret algorithm to generate beautiful new colors.



BFA0A3



F7C8CD



BFACA0



5E5556



9E000F



1F0003

Inverse Universe

The Inverse Universe completely reimagines the original color for something new.



BFA0A3



F7C8CD



A0B3BF



5E5556



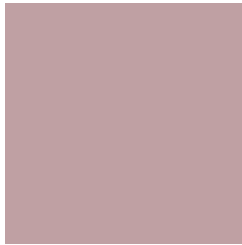
9E000F



1F0003

Previews

White Background



This preview shows how the Hex color BFA0A3 looks on a white background.

Color Contrast Check

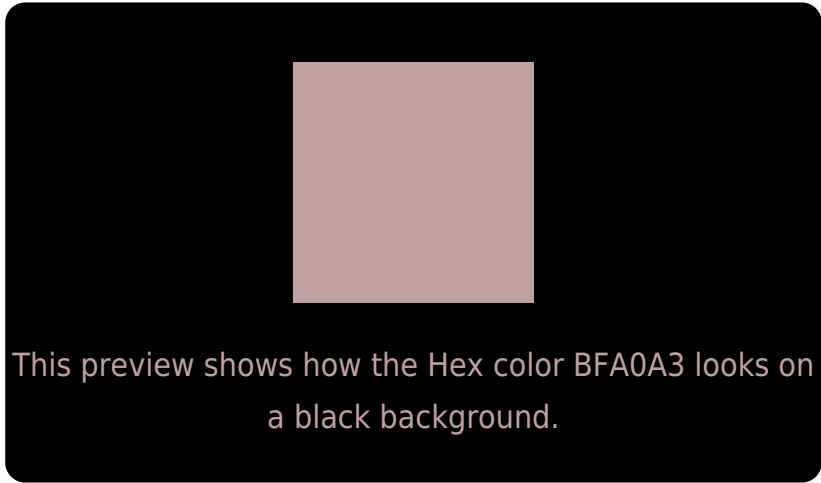
Large Text (above 18pt) WCAG AA × Fail

Any Text WCAG AA × Fail

Large Text (above 18pt) WCAG AAA × Fail

Any Text WCAG AAA × Fail

Black Background



Color Contrast Check

Large Text (above 18pt) WCAG AA ✓ Pass

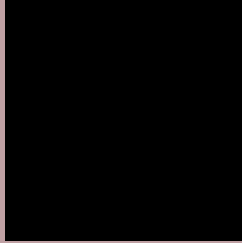
Any Text WCAG AA ✓ Pass

Large Text (above 18pt) WCAG AAA ✓ Pass

Any Text WCAG AAA ✓ Pass

If you want to check with other color combinations, try the [Color Contrast Checker](#).

Hex BFA0A3 Background



This preview shows how black text looks on a background with the Hex color BFA0A3.



This preview shows how white text looks on a background with the Hex color BFA0A3.

Color Blindness Simulation

Color vision deficiency is a very complex topic, and I could not describe the different causes any better than Wikipedia does, so if you want to learn more, you should check out their [article about color blindness](#).

Dichromacy



Original Color
BFA0A3

Protanopia
ABA7A7

Deuteranopia
BAA2A3

Trichromacy



Original Color
BFA0A3

Protanomaly
B2A4A6

Deuteranomaly
BCA1A3

Tritanomaly
C09FA8

Monochromacy



Original Color
BFA0A3

Achromatopsia
AAAAAA

Achromatomaly
B2A6A7

CSS Examples

Text

The CSS property to change the color of the text to Hex BFA0A3 is called "color". The color property can be set on classes, ids or directly on the HTML element.

This example shows how text in the color #BFA0A3 looks like.

```
.text, #text, p{  
    color:#BFA0A3  
}
```

If you want to add a text shadow in that color use the text-shadow property, you can generate a text shadow directly with our [CSS Text Shadow Generator](#).

Here you see how black text with a 4 pixel #BFA0A3 colored shadow looks like.

```
.shadow{ text-shadow: 4px 4px 2px #BFA0A3
}
```

Border

The CSS property to change the border of an element to Hex BFA0A3 is called "border". The border property can be set on classes, ids or directly on the HTML element.

This example shows the color as border, it can be applied via the CSS property "border" or "border-color".

```
.border, #border, table{ border:4px solid
#BFA0A3 }
```

If only the border color should be changed use the property `border-color`.

```
.border{ border-color:#BFA0A3 }
```

If you want to add a box shadow in that color use:

Here you see how a box with a 4 pixel #BFA0A3 colored shadow looks like.

```
.boxshadow{ -moz-box-shadow:4px 4px 4px  
4px #BFA0A3; -webkit-box-shadow:4px 4px  
4px 4px #BFA0A3; box-shadow:4px 4px 4px  
4px #BFA0A3 }
```

Background

The CSS property to change the background color of an element to Hex BFA0A3 is called "background". The background property can be set on classes, ids or directly on the HTML element.

```
.background, #background, body{  
background:#BFA0A3 }
```

If only the background color should be changed can be used:

```
.background{ background-color:#BFA0A3 }
```

This example shows the color as background, it is applied via the CSS property "background".

To optimize and compress your CSS code, you can use our [online CSS compressor and optimizer](#) based on csstidy. If you want to create a linear or radial gradient as background or border, check our [CSS Gradient Generator](#).

Hey! You found this booklet interesting? Support Converting Colors with the new Membership Option!

The pro membership hides all ads, plus gives you double the colors in the color bucket, and more awesome pro features!

[Learn more, Memberships starting at \\$2.50/m!](#)

**Follow me
on Twitter!**

@ConvertingColor