

Converting Colors

Hex(BFA199)

Have a look what the booklet for
Hex(BFA199) contains.

Hex(BFA199)	3
<i>Conversions</i>	4
<i>Details</i>	6
<i>Harmonies</i>	11
<i>Previews</i>	23
<i>Color Blindness Simulation</i>	26
<i>CSS Examples</i>	29

Color

Hex(BFA199)

Conversions

Conversions Part 1

Format	Color
Hex	BFA199
RGB	191, 161, 153
RGB Percent	75%, 63%, 60%
CMY	0.2510, 0.3686, 0.4000
CMYK	0.00, 0.16, 0.20, 0.25
HSL	13°, 23%, 67%
HSV	13°, 20%, 75%
XYZ	39.9805, 38.8660, 35.5317
YIQ	169.0580, 20.4480, 3.8720

Conversions

Conversions Part 2

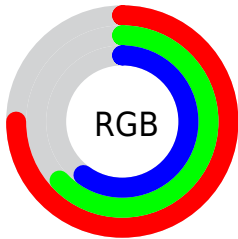
Format	Color
RYB	191, 163, 153
Decimal	12558745
CIELab	68.65, 9.75, 8.26
CIELCh	69, 12.776, 40.289
Yxy	38.8660, 0.3495, 0.3398
Android (android.graphics.Color)	4290748825 (0xFFBFA199)
YUV	169.0580, -7.9166, 19.2431
Hunter-Lab	62.3426, 5.3730, 9.8480

Details

The Hex color **BFA199** is a light color, and the websafe version is hex **CC9999**. A complement of this color would be **99B7BF**, and the grayscale version is **A9A9A9**.

A 20% lighter version of the original color is **F8D8CF**, and **896D66** is the 20% darker color. If you saturate the color by 10%, you get **BF9286**, and if you desaturate by 10%, it is **BFB0AC**.

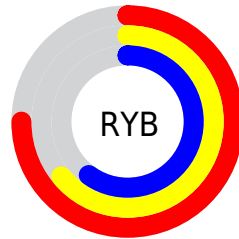
Distribution



Red (75%)

Green (63%)

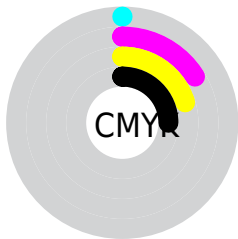
Blue (60%)



Red (75%)

Yellow (64%)

Blue (60%)

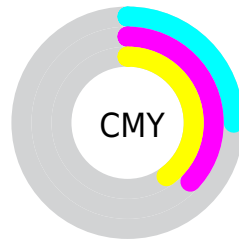


Cyan (0%)

Magenta (16%)

Yellow (20%)

Black (25%)



Cyan (25%)

Magenta (37%)

Yellow (40%)

Brightness & Saturation Gradients

These gradients show how the Hex color BFA199 changes by changing the brightness by 10 percent. The first figure shows a shift by +10% for each color and the second figure -10%.

Similar to the brightness gradients but the following saturation gradients show a change of the Hex color BFA199 by changing the saturation by 10% instead.

 BFA199

 BFA199

FFFFFF

 A4877F

 F8D8CF

 896D66

 FFF4EC

 6F554E

 563E37

 3F2822

 28130C

 0A0000

 000000

 BFA199

 BFA199

 BF9286

 BFB0AC

 BF8373

 BFBFBF

 BF7460

 BFCED2

 BF654D

 BFDDE5

 BF5639

 BFECF9

 BF4726

 BFFBFF

 BF3713

 BFFFFFF

 BF2800

Harmonies

Analogous

The Analogous color harmony consists of three colors that are next to each other on the color wheel.



C0A0A4



BFA199



B8A492

Triad

The Triadic color harmony groups three colors that are evenly spaced from another and form a triangle on the color wheel.



BFA199



93AE9F



A0A7BE

Complementary

The Complementary color scheme is a pair of colors which are on the opposite of each other on the color wheel.



BFA199



99B7BF

Split Complementary

Split-complementary colors differ from the complementary color scheme. The scheme consists of three colors, the original color and two neighbors of the complement color.



93ABBD



BFA199



8BAEAB

Square

The Square scheme is like the rectangle color scheme, but the four colors are evenly spaced on the color wheel.



BFA199



9FAB96



8BADB6



AFA3B9

Rectangle

The Rectangle color scheme consists of four colors that form a rectangle on the color wheel.



BFA199



B1A791



8BADB6



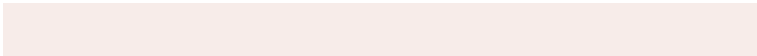
9BA8BE

Sweetspot

The Sweet Spot groups the original color and five complimentary colors.



BFA199



F7ECE9



BF99B7



7D7674



FCFCFC



7D7D7D

Same Dimension

The Same Dimension uses a secret algorithm to generate beautiful new colors.



BFA199



F7C8BC



BFB499



5E5755



9E2100



1F0600

Inverse Universe

The Inverse Universe completely reimagines the original color for something new.



99B7BF



BCEBF7



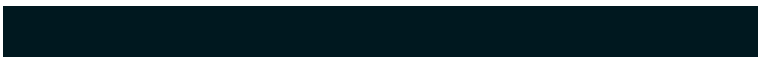
99A4BF



555C5E



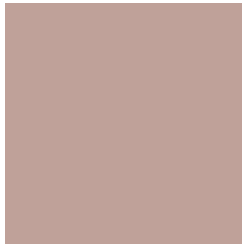
007D9E



00181F

Previews

White Background



This preview shows how the Hex color BFA199 looks on a white background.

Color Contrast Check

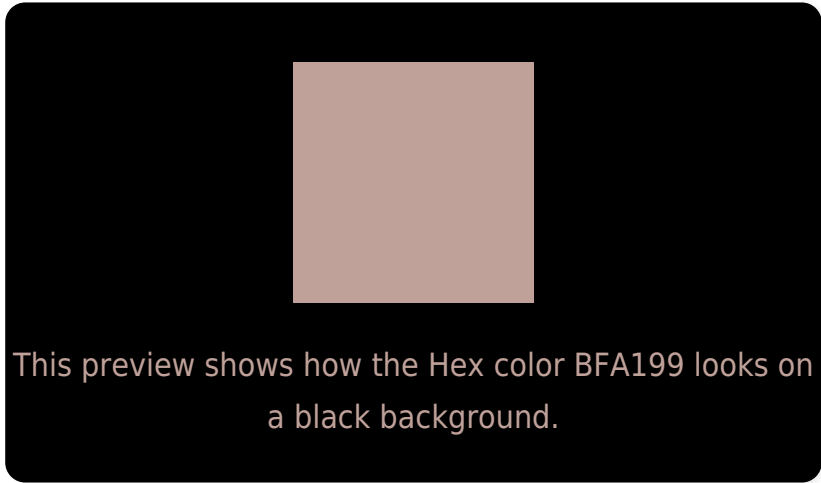
Large Text (above 18pt) WCAG AA × Fail

Any Text WCAG AA × Fail

Large Text (above 18pt) WCAG AAA × Fail

Any Text WCAG AAA × Fail

Black Background



Color Contrast Check

Large Text (above 18pt) WCAG AA ✓ Pass

Any Text WCAG AA ✓ Pass

Large Text (above 18pt) WCAG AAA ✓ Pass

Any Text WCAG AAA ✓ Pass

If you want to check with other color combinations, try the [Color Contrast Checker](#).

Hex BFA199 Background



This preview shows how black text looks on a background with the Hex color BFA199.



This preview shows how white text looks on a background with the Hex color BFA199.

Color Blindness Simulation

Color vision deficiency is a very complex topic, and I could not describe the different causes any better than Wikipedia does, so if you want to learn more, you should check out their [article about color blindness](#).

Dichromacy



Original Color
BFA199

Protanopia
ADA79C

Deuteranopia
BDA299



Tritanopia
C19EAB

Trichromacy



Original Color
BFA199

Protanomaly
B4A59B

Deuteranomaly
BEA299

Tritanomaly
C09FA4

Monochromacy



Original Color
BFA199

Achromatopsia
A9A9A9

Achromatomaly
B1A6A3

CSS Examples

Text

The CSS property to change the color of the text to Hex BFA199 is called "color". The color property can be set on classes, ids or directly on the HTML element.

This example shows how text in the color #BFA199 looks like.

```
.text, #text, p{  
    color:#BFA199  
}
```

If you want to add a text shadow in that color use the text-shadow property, you can generate a text shadow directly with our [CSS Text Shadow Generator](#).

Here you see how black text with a 4 pixel #BFA199 colored shadow looks like.

```
.shadow{ text-shadow: 4px 4px 2px #BFA199
}
```

Border

The CSS property to change the border of an element to Hex BFA199 is called "border". The border property can be set on classes, ids or directly on the HTML element.

This example shows the color as border, it can be applied via the CSS property "border" or "border-color".

```
.border, #border, table{ border:4px solid
#BFA199 }
```

If only the border color should be changed use the property `border-color`.

```
.border{ border-color:#BFA199 }
```

If you want to add a box shadow in that color use:

Here you see how a box with a 4 pixel #BFA199 colored shadow looks like.

```
.boxshadow{ -moz-box-shadow:4px 4px 4px  
4px #BFA199; -webkit-box-shadow:4px 4px  
4px 4px #BFA199; box-shadow:4px 4px 4px  
4px #BFA199 }
```

Background

The CSS property to change the background color of an element to Hex BFA199 is called "background". The background property can be set on classes, ids or directly on the HTML element.

```
.background, #background, body{  
background:#BFA199 }
```

If only the background color should be changed can be used:

```
.background{ background-color:#BFA199 }
```

This example shows the color as background, it is applied via the CSS property "background".

To optimize and compress your CSS code, you can use our [online CSS compressor and optimizer](#) based on csstidy. If you want to create a linear or radial gradient as background or border, check our [CSS Gradient Generator](#).

Hey! You found this booklet interesting? Support Converting Colors with the new Membership Option!

The pro membership hides all ads, plus gives you double the colors in the color bucket, and more awesome pro features!

[Learn more, Memberships starting at \\$2.50/m!](#)

**Follow me
on Twitter!**

@ConvertingColor