

Converting Colors

Hex(BFA1A1)

Have a look what the booklet for
Hex(BFA1A1) contains.

Hex(BFA1A1)	3
<i>Conversions</i>	4
<i>Details</i>	6
<i>Harmonies</i>	11
<i>Previews</i>	23
<i>Color Blindness Simulation</i>	26
<i>CSS Examples</i>	29

Color

Hex(BFA1A1)

Conversions

Conversions Part 1

Format	Color
Hex	BFA1A1
RGB	191, 161, 161
RGB Percent	75%, 63%, 63%
CMY	0.2510, 0.3686, 0.3686
CMYK	0.00, 0.16, 0.16, 0.25
HSL	0°, 19%, 69%
HSV	0°, 16%, 75%
XYZ	40.6637, 39.1393, 39.1296
YIQ	169.9700, 17.8800, 6.3600

Conversions

Conversions Part 2

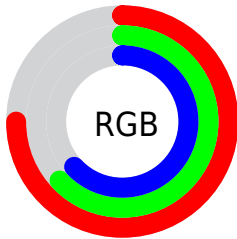
Format	Color
RYB	191, 161, 161
Decimal	12558753
CIELab	68.85, 11.01, 4.10
CIELCh	69, 11.754, 20.434
Yxy	39.1393, 0.3419, 0.3291
Android (android.graphics.Color)	4290748833 (0xFFBFA1A1)
YUV	169.9700, -4.4222, 18.4433
Hunter-Lab	62.5614, 6.5392, 6.7095

Details

The Hex color **BFA1A1** is a light color, and the websafe version is hex **CC9999**. A complement of this color would be **A1BFBF**, and the grayscale version is **AAAAAA**.

A 20% lighter version of the original color is **F8D8D8**, and **896D6E** is the 20% darker color. If you saturate the color by 10%, you get **BF8E8E**, and if you desaturate by 10%, it is **BFB4B4**.

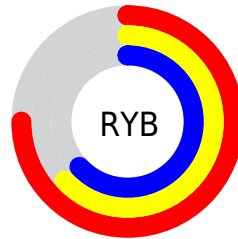
Distribution



Red (75%)

Green (63%)

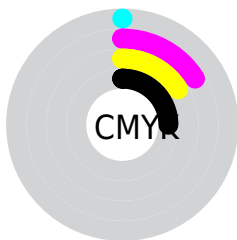
Blue (63%)



Red (75%)

Yellow (63%)

Blue (63%)

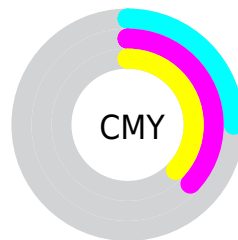


Cyan (0%)

Magenta (16%)

Yellow (16%)

Black (25%)



Cyan (25%)

Magenta (37%)

Yellow (37%)

Brightness & Saturation Gradients

These gradients show how the Hex color BFA1A1 changes by changing the brightness by 10 percent. The first figure shows a shift by +10% for each color and the second figure -10%.

Similar to the brightness gradients but the following saturation gradients show a change of the Hex color BFA1A1 by changing the saturation by 10% instead.



BFA1A1



BFA1A1

FFFFFF



A48787



F8D8D8



896D6E



FFF4F4



705555



573E3E



3F2828



281314



0F0000



000000



BFA1A1



BFA1A1

 BF8E8E

 BFB4B4

 BF7B7B

 BFC7C7

 BF6868

 BFDADA

 BF5555

 BFEDED

 BF4242

 BFFFFFF

 BF2E2E

 BF1B1B

 BF0808

 BF0000

Harmonies

Analogous

The Analogous color harmony consists of three colors that are next to each other on the color wheel.



BCA1AC



BFA1A1



BCA398

Triad

The Triadic color harmony groups three colors that are evenly spaced from another and form a triangle on the color wheel.



BFA1A1



9DAC9A



99AABD

Complementary

The Complementary color scheme is a pair of colors which are on the opposite of each other on the color wheel.



BFA1A1



A1BFBF

Split Complementary

Split-complementary colors differ from the complementary color scheme. The scheme consists of three colors, the original color and two neighbors of the complement color.



90ADB8



BFA1A1



92AEA4

Square

The Square scheme is like the rectangle color scheme, but the four colors are evenly spaced on the color wheel.



BFA1A1



A9AA94



8DAEAF



A6A6BC

Rectangle

The Rectangle color scheme consists of four colors that form a rectangle on the color wheel.



BFA1A1



B7A594



8DAEAF



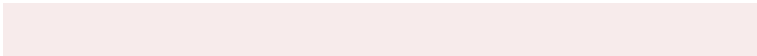
95ABBC

Sweetspot

The Sweet Spot groups the original color and five complimentary colors.



BFA1A1



F7EBEB



BFA1BF



7D7575



FCFCFC



7D7D7D

Same Dimension

The Same Dimension uses a secret algorithm to generate beautiful new colors.



BFA1A1



F7C8C8



BFB0A1



5E5555



9E0000



1F0000

Inverse Universe

The Inverse Universe completely reimagines the original color for something new.



A1BFBF



C8F7F7



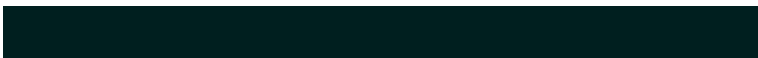
A1B0BF



555E5E



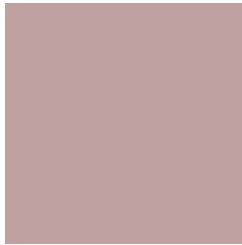
009E9E



001F1F

Previews

White Background



This preview shows how the Hex color BFA1A1 looks on a white background.

Color Contrast Check

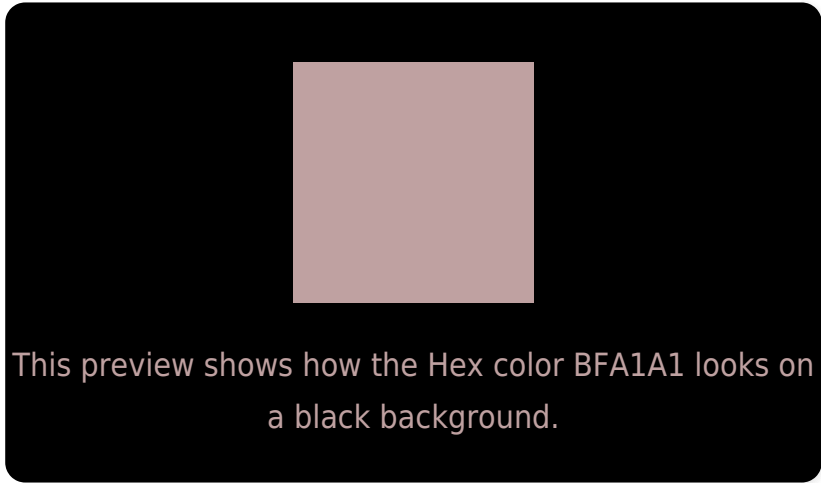
Large Text (above 18pt) WCAG AA × Fail

Any Text WCAG AA × Fail

Large Text (above 18pt) WCAG AAA × Fail

Any Text WCAG AAA × Fail

Black Background



Color Contrast Check

Large Text (above 18pt) WCAG AA ✓ Pass

Any Text WCAG AA ✓ Pass

Large Text (above 18pt) WCAG AAA ✓ Pass

Any Text WCAG AAA ✓ Pass

If you want to check with other color combinations, try the [Color Contrast Checker](#).

Hex BFA1A1 Background



This preview shows how black text looks on a background with the Hex color BFA1A1.



This preview shows how white text looks on a background with the Hex color BFA1A1.

Color Blindness Simulation

Color vision deficiency is a very complex topic, and I could not describe the different causes any better than Wikipedia does, so if you want to learn more, you should check out their [article about color blindness](#).

Dichromacy



Original Color
BFA1A1

Protanopia
ACA7A5

Deuteranopia
BBA2A1

Trichromacy



Original Color
BFA1A1

Protanomaly
B3A5A4

Deuteranomaly
BCA2A1

Tritanomaly
C0A0A8

Monochromacy



Original Color
BFA1A1

Achromatopsia
AAAAAA

Achromatomaly
B2A7A7

CSS Examples

Text

The CSS property to change the color of the text to Hex BFA1A1 is called "color". The color property can be set on classes, ids or directly on the HTML element.

This example shows how text in the color #BFA1A1 looks like.

```
.text, #text, p{  
    color:#BFA1A1  
}
```

If you want to add a text shadow in that color use the text-shadow property, you can generate a text shadow directly with our [CSS Text Shadow Generator](#).

Here you see how black text with a 4 pixel #BFA1A1 colored shadow looks like.

```
.shadow{ text-shadow: 4px 4px 2px #BFA1A1
}
```

Border

The CSS property to change the border of an element to Hex BFA1A1 is called "border". The border property can be set on classes, ids or directly on the HTML element.

This example shows the color as border, it can be applied via the CSS property "border" or "border-color".

```
.border, #border, table{ border:4px solid
#BFA1A1 }
```

If only the border color should be changed use the property `border-color`.

```
.border{ border-color:#BFA1A1 }
```

If you want to add a box shadow in that color use:

Here you see how a box with a 4 pixel #BFA1A1 colored shadow looks like.

```
.boxshadow{ -moz-box-shadow:4px 4px 4px  
4px #BFA1A1; -webkit-box-shadow:4px 4px  
4px 4px #BFA1A1; box-shadow:4px 4px 4px  
4px #BFA1A1 }
```

Background

The CSS property to change the background color of an element to Hex BFA1A1 is called "background". The background property can be set on classes, ids or directly on the HTML element.

```
.background, #background, body{  
background:#BFA1A1 }
```

If only the background color should be changed can be used:

```
.background{ background-color:#BFA1A1 }
```

This example shows the color as background, it is applied via the CSS property "background".

To optimize and compress your CSS code, you can use our [online CSS compressor and optimizer](#) based on csstidy. If you want to create a linear or radial gradient as background or border, check our [CSS Gradient Generator](#).

Hey! You found this booklet interesting? Support Converting Colors with the new Membership Option!

The pro membership hides all ads, plus gives you double the colors in the color bucket, and more awesome pro features!

[Learn more, Memberships starting at \\$2.50/m!](#)

**Follow me
on Twitter!**

@ConvertingColor