

Converting Colors

Hex(BFA1AA)

Have a look what the booklet for
Hex(BFA1AA) contains.

Hex(BFA1AA)	3
<i>Conversions</i>	4
<i>Details</i>	6
<i>Harmonies</i>	11
<i>Previews</i>	23
<i>Color Blindness Simulation</i>	26
<i>CSS Examples</i>	29

Color

Hex(BFA1AA)

Conversions

Conversions Part 1

Format	Color
Hex	BFA1AA
RGB	191, 161, 170
RGB Percent	75%, 63%, 67%
CMY	0.2510, 0.3686, 0.3333
CMYK	0.00, 0.16, 0.11, 0.25
HSL	342°, 19%, 69%
HSV	342°, 16%, 75%
XYZ	41.4864, 39.4684, 43.4618
YIQ	170.9960, 14.9910, 9.1590

Conversions

Conversions Part 2

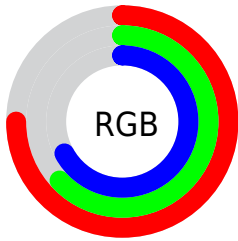
Format	Color
RYB	191, 161, 170
Decimal	12558762
CIELab	69.09, 12.52, -0.55
CIELCh	69, 12.528, 357.472
Yxy	39.4684, 0.3334, 0.3172
Android (android.graphics.Color)	4290748842 (0xFFBFA1AA)
YUV	170.9960, -0.4910, 17.5435
Hunter-Lab	62.8239, 7.9327, 2.9597

Details

The Hex color **BFA1AA** is a light color, and the websafe version is hex **CC9999**. A complement of this color would be **A1BFB6**, and the grayscale version is **ABABAB**.

A 20% lighter version of the original color is **F8D8E1**, and **896D76** is the 20% darker color. If you saturate the color by 10%, you get **BF8E9D**, and if you desaturate by 10%, it is **BFB4B7**.

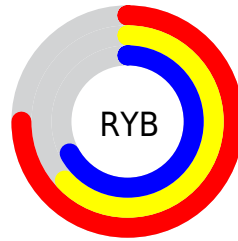
Distribution



Red (75%)

Green (63%)

Blue (67%)



Red (75%)

Yellow (63%)

Blue (67%)

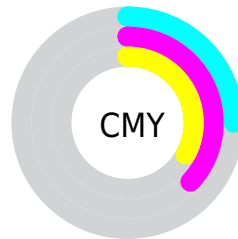


Cyan (0%)

Magenta (16%)

Yellow (11%)

Black (25%)



Cyan (25%)

Magenta (37%)

Yellow (33%)

Brightness & Saturation Gradients

These gradients show how the Hex color BFA1AA changes by changing the brightness by 10 percent. The first figure shows a shift by +10% for each color and the second figure -10%.

Similar to the brightness gradients but the following saturation gradients show a change of the Hex color BFA1AA by changing the saturation by 10% instead.



BFA1AA



BFA1AA

FFFFFF



A48790



F8D8E1



896D76



FFF4FE



70555D



573E46



3F282F



29131B



140000



000000



BFA1AA



BFA1AA

 BF8E9D

 BFB4B7

 BF7B8F

 BFC7C5

 BF6882

 BFDAD2

 BF5575

 BFEDDF

 BF4267

 BFFFED

 BF2E5A

 BFFFFA

 BF1B4C

 BFFFFFF

 BF083F

 BF0039

Harmonies

Analogous

The Analogous color harmony consists of three colors that are next to each other on the color wheel.



B7A3B5



BFA1AA



C1A19F

Triad

The Triadic color harmony groups three colors that are evenly spaced from another and form a triangle on the color wheel.



BFA1AA



A6AB94



90ADBB

Complementary

The Complementary color scheme is a pair of colors which are on the opposite of each other on the color wheel.



BFA1AA



A1BFB6

Split Complementary

Split-complementary colors differ from the complementary color scheme. The scheme consists of three colors, the original color and two neighbors of the complement color.



8CAF^B3



BFA1AA



99AE9C

Square

The Square scheme is like the rectangle color scheme, but the four colors are evenly spaced on the color wheel.



BFA1AA



B3A792



90AFA7



9BAABF

Rectangle

The Rectangle color scheme consists of four colors that form a rectangle on the color wheel.



BFA1AA



BFA398



90AFA7



8EAEB9

Sweetspot

The Sweet Spot groups the original color and five complimentary colors.



BFA1AA



F7EBEF



B6A1BF



7D7578



FCFCFC



7D7D7D

Same Dimension

The Same Dimension uses a secret algorithm to generate beautiful new colors.



BFA1AA



F7C8D6



BFA7A1



5E5558



9E002F



1F0009

Inverse Universe

The Inverse Universe completely reimagines the original color for something new.



BFA1AA



F7C8D6



A1B9BF



5E5558



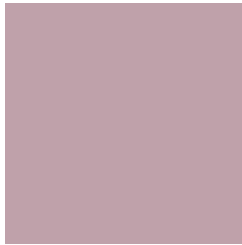
9E002F



1F0009

Previews

White Background



This preview shows how the Hex color BFA1AA looks on a white background.

Color Contrast Check

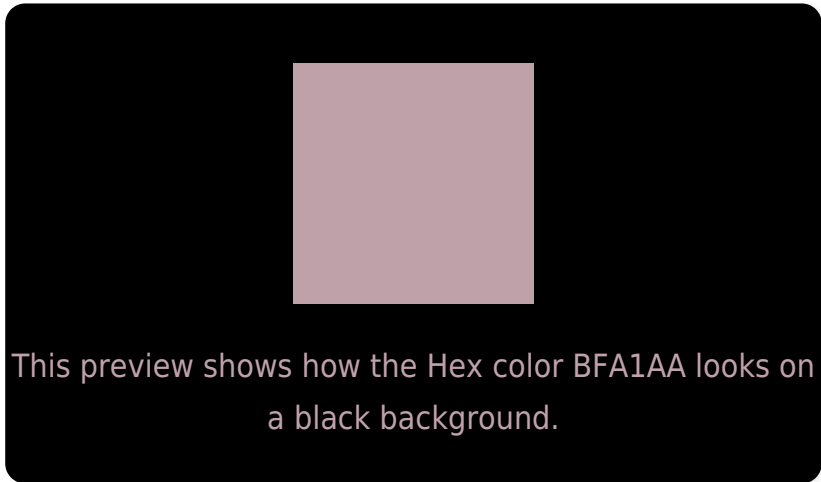
Large Text (above 18pt) WCAG AA × Fail

Any Text WCAG AA × Fail

Large Text (above 18pt) WCAG AAA × Fail

Any Text WCAG AAA × Fail

Black Background



Color Contrast Check

Large Text (above 18pt) WCAG AA ✓ Pass

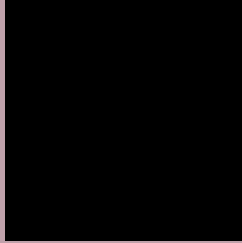
Any Text WCAG AA ✓ Pass

Large Text (above 18pt) WCAG AAA ✓ Pass

Any Text WCAG AAA ✓ Pass

If you want to check with other color combinations, try the [Color Contrast Checker](#).

Hex BFA1AA Background



This preview shows how black text looks on a background with the Hex color BFA1AA.



This preview shows how white text looks on a background with the Hex color BFA1AA.

Color Blindness Simulation

Color vision deficiency is a very complex topic, and I could not describe the different causes any better than Wikipedia does, so if you want to learn more, you should check out their [article about color blindness](#).

Dichromacy



Original Color
BFA1AA

Protanopia
AAA8AE

Deuteranopia
B9A3AA



Tritanopia
BFA1AD

Trichromacy



Original Color
BFA1AA

Protanomaly
B2A5AD

Deuteranomaly
BBA2AA

Tritanomaly
BFA1AC

Monochromacy



Original Color
BFA1AA

Achromatopsia
ABABAB

Achromatomaly
B2A7AB

CSS Examples

Text

The CSS property to change the color of the text to Hex BFA1AA is called "color". The color property can be set on classes, ids or directly on the HTML element.

This example shows how text in the color #BFA1AA looks like.

```
.text, #text, p{  
    color:#BFA1AA  
}
```

If you want to add a text shadow in that color use the text-shadow property, you can generate a text shadow directly with our [CSS Text Shadow Generator](#).

Here you see how black text with a 4 pixel #BFA1AA colored shadow looks like.

```
.shadow{ text-shadow: 4px 4px 2px #BFA1AA
}
```

Border

The CSS property to change the border of an element to Hex BFA1AA is called "border". The border property can be set on classes, ids or directly on the HTML element.

This example shows the color as border, it can be applied via the CSS property "border" or "border-color".

```
.border, #border, table{ border:4px solid
#BFA1AA }
```

If only the border color should be changed use the property `border-color`.

```
.border{ border-color:#BFA1AA }
```

If you want to add a box shadow in that color use:

Here you see how a box with a 4 pixel #BFA1AA colored shadow looks like.

```
.boxshadow{ -moz-box-shadow:4px 4px 4px  
4px #BFA1AA; -webkit-box-shadow:4px 4px  
4px 4px #BFA1AA; box-shadow:4px 4px 4px  
4px #BFA1AA }
```

Background

The CSS property to change the background color of an element to Hex BFA1AA is called "background". The background property can be set on classes, ids or directly on the HTML element.

```
.background, #background, body{  
background:#BFA1AA }
```

If only the background color should be changed can be used:

```
.background{ background-color:#BFA1AA }
```

This example shows the color as background, it is applied via the CSS property "background".

To optimize and compress your CSS code, you can use our [online CSS compressor and optimizer](#) based on csstidy. If you want to create a linear or radial gradient as background or border, check our [CSS Gradient Generator](#).

Hey! You found this booklet interesting? Support Converting Colors with the new Membership Option!

The pro membership hides all ads, plus gives you double the colors in the color bucket, and more awesome pro features!

[Learn more, Memberships starting at \\$2.50/m!](#)

**Follow me
on Twitter!**

@ConvertingColor