

Converting Colors

Hex(BFA3A3)

Have a look what the booklet for
Hex(BFA3A3) contains.

Hex(BFA3A3)	3
<i>Conversions</i>	4
<i>Details</i>	6
<i>Harmonies</i>	11
<i>Previews</i>	23
<i>Color Blindness Simulation</i>	26
<i>CSS Examples</i>	29

Color

Hex(BFA3A3)

Conversions

Conversions Part 1

Format	Color
Hex	BFA3A3
RGB	191, 163, 163
RGB Percent	75%, 64%, 64%
CMY	0.2510, 0.3608, 0.3608
CMYK	0.00, 0.15, 0.15, 0.25
HSL	0°, 18%, 69%
HSV	0°, 15%, 75%
XYZ	41.1939, 39.9151, 40.1836
YIQ	171.3720, 16.6880, 5.9360

Conversions

Conversions Part 2

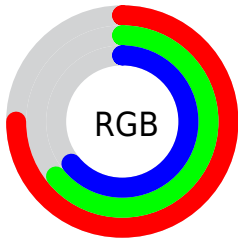
Format	Color
RYB	191, 163, 163
Decimal	12559267
CIELab	69.41, 10.24, 3.80
CIELCh	69, 10.925, 20.346
Yxy	39.9151, 0.3396, 0.3291
Android (android.graphics.Color)	4290749347 (0xFFBFA3A3)
YUV	171.3720, -4.1274, 17.2138
Hunter-Lab	63.1784, 5.8243, 6.5145

Details

The Hex color **BFA3A3** is a light color, and the websafe version is hex **CC9999**. A complement of this color would be **A3BFBF**, and the grayscale version is **ABABAB**.

A 20% lighter version of the original color is **F8DADA**, and **896F6F** is the 20% darker color. If you saturate the color by 10%, you get **BF9090**, and if you desaturate by 10%, it is **BFB6B6**.

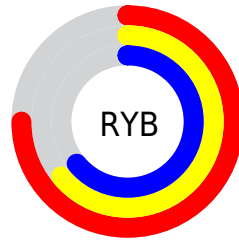
Distribution



Red (75%)

Green (64%)

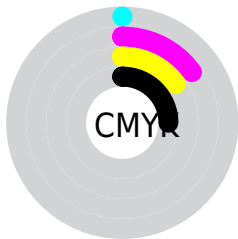
Blue (64%)



Red (75%)

Yellow (64%)

Blue (64%)

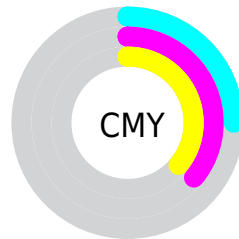


Cyan (0%)

Magenta (15%)

Yellow (15%)

Black (25%)



Cyan (25%)

Magenta (36%)

Yellow (36%)

Brightness & Saturation Gradients

These gradients show how the Hex color BFA3A3 changes by changing the brightness by 10 percent. The first figure shows a shift by +10% for each color and the second figure -10%.

Similar to the brightness gradients but the following saturation gradients show a change of the Hex color BFA3A3 by changing the saturation by 10% instead.



BFA3A3



BFA3A3

FFFFFF



A48989



F8DADA



896F6F



FFF6F6



705757



573F40



3F292A



291516



120000



000000



BFA3A3



BFA3A3

 BF9090

 BFB6B6

 BF7D7D

 BFC9C9

 BF6A6A

 BFDCDC

 BF5757

 BFEFEF

 BF4343

 BFFFFFF

 BF3030

 BF1D1D

 BF0A0A

 BF0000

Harmonies

Analogous

The Analogous color harmony consists of three colors that are next to each other on the color wheel.



BCA3AD



BFA3A3



BCA59B

Triad

The Triadic color harmony groups three colors that are evenly spaced from another and form a triangle on the color wheel.



BFA3A3



9FAE9D



9BABBD

Complementary

The Complementary color scheme is a pair of colors which are on the opposite of each other on the color wheel.



BFA3A3



A3BFBF

Split Complementary

Split-complementary colors differ from the complementary color scheme. The scheme consists of three colors, the original color and two neighbors of the complement color.



93AEB8



BFA3A3



95AFA6

Square

The Square scheme is like the rectangle color scheme, but the four colors are evenly spaced on the color wheel.



BFA3A3



AAAB97



91AFB0



A8A8BC

Rectangle

The Rectangle color scheme consists of four colors that form a rectangle on the color wheel.



BFA3A3



B8A797



91AFB0



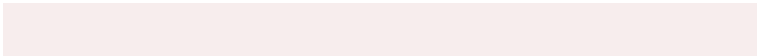
98ACBC

Sweetspot

The Sweet Spot groups the original color and five complimentary colors.



BFA3A3



F7EDED



BFA3BF



7D7777



FCFCFC



7D7D7D

Same Dimension

The Same Dimension uses a secret algorithm to generate beautiful new colors.



BFA3A3



F7CBCB



BFB1A3



5E5555



9E0000



1F0000

Inverse Universe

The Inverse Universe completely reimagines the original color for something new.



A3BFBF



CBF7F7



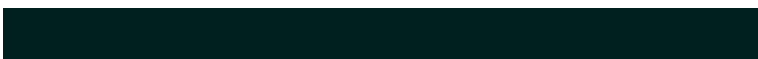
A3B1BF



555E5E



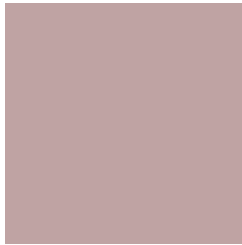
009E9E



001F1F

Previews

White Background



This preview shows how the Hex color BFA3A3 looks on a white background.

Color Contrast Check

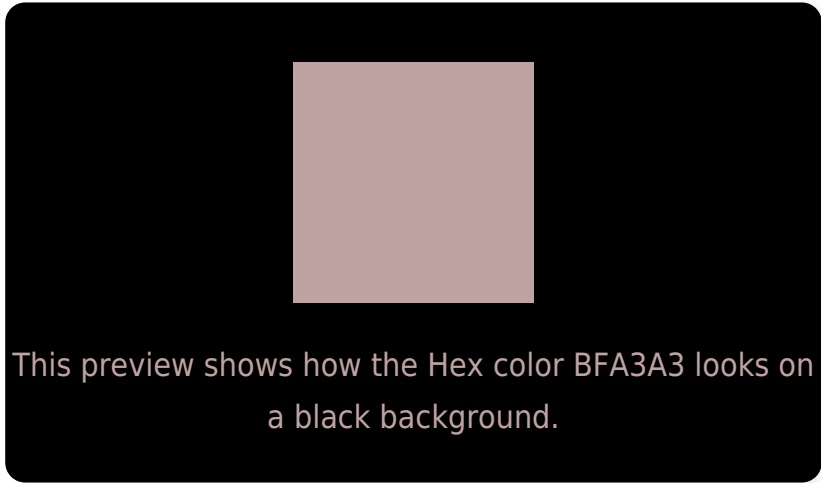
Large Text (above 18pt) WCAG AA × Fail

Any Text WCAG AA × Fail

Large Text (above 18pt) WCAG AAA × Fail

Any Text WCAG AAA × Fail

Black Background



Color Contrast Check

Large Text (above 18pt) WCAG AA ✓ Pass

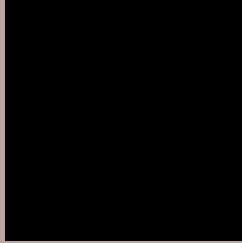
Any Text WCAG AA ✓ Pass

Large Text (above 18pt) WCAG AAA ✓ Pass

Any Text WCAG AAA ✓ Pass

If you want to check with other color combinations, try the [Color Contrast Checker](#).

Hex BFA3A3 Background



This preview shows how black text looks on a background with the Hex color BFA3A3.



This preview shows how white text looks on a background with the Hex color BFA3A3.

Color Blindness Simulation

Color vision deficiency is a very complex topic, and I could not describe the different causes any better than Wikipedia does, so if you want to learn more, you should check out their [article about color blindness](#).

Dichromacy



Original Color
BFA3A3

Protanopia
ADA9A6

Deuteranopia
BDA4A3

Trichromacy



Original Color
BFA3A3

Protanomaly
B4A7A5

Deuteranomaly
BEA4A3

Tritanomaly
C0A2AA

Monochromacy



Original Color
BFA3A3

Achromatopsia
ABABAB

Achromatomaly
B2A8A8

CSS Examples

Text

The CSS property to change the color of the text to Hex BFA3A3 is called "color". The color property can be set on classes, ids or directly on the HTML element.

This example shows how text in the color #BFA3A3 looks like.

```
.text, #text, p{  
    color:#BFA3A3  
}
```

If you want to add a text shadow in that color use the text-shadow property, you can generate a text shadow directly with our [CSS Text Shadow Generator](#).

Here you see how black text with a 4 pixel #BFA3A3 colored shadow looks like.

```
.shadow{ text-shadow: 4px 4px 2px #BFA3A3
}
```

Border

The CSS property to change the border of an element to Hex BFA3A3 is called "border". The border property can be set on classes, ids or directly on the HTML element.

This example shows the color as border, it can be applied via the CSS property "border" or "border-color".

```
.border, #border, table{ border:4px solid
#BFA3A3 }
```

If only the border color should be changed use the property `border-color`.

```
.border{ border-color:#BFA3A3 }
```

If you want to add a box shadow in that color use:

Here you see how a box with a 4 pixel #BFA3A3 colored shadow looks like.

```
.boxshadow{ -moz-box-shadow:4px 4px 4px  
4px #BFA3A3; -webkit-box-shadow:4px 4px  
4px 4px #BFA3A3; box-shadow:4px 4px 4px  
4px #BFA3A3 }
```

Background

The CSS property to change the background color of an element to Hex BFA3A3 is called "background". The background property can be set on classes, ids or directly on the HTML element.

```
.background, #background, body{  
background:#BFA3A3 }
```

If only the background color should be changed can be used:

```
.background{ background-color:#BFA3A3 }
```

This example shows the color as background, it is applied via the CSS property "background".

To optimize and compress your CSS code, you can use our [online CSS compressor and optimizer](#) based on csstidy. If you want to create a linear or radial gradient as background or border, check our [CSS Gradient Generator](#).

Hey! You found this booklet interesting? Support Converting Colors with the new Membership Option!

The pro membership hides all ads, plus gives you double the colors in the color bucket, and more awesome pro features!

[Learn more, Memberships starting at \\$2.50/m!](#)

**Follow me
on Twitter!**

@ConvertingColor