

# Converting Colors

Hex(BFA9AA)

Have a look what the booklet for  
Hex(BFA9AA) contains.

<b>Hex(BFA9AA)</b> .....	3
<i><b>Conversions</b></i> .....	4
<i><b>Details</b></i> .....	6
<i><b>Harmonies</b></i> .....	11
<i><b>Previews</b></i> .....	23
<i><b>Color Blindness Simulation</b></i> .....	26
<i><b>CSS Examples</b></i> .....	29

# **Color**

**Hex(BFA9AA)**

# Conversions

## Conversions Part 1

Format	Color
Hex	BFA9AA
RGB	191, 169, 170
RGB Percent	75%, 66%, 67%
CMY	0.2510, 0.3373, 0.3333
CMYK	0.00, 0.12, 0.11, 0.25
HSL	357°, 15%, 71%
HSV	357°, 12%, 75%
XYZ	42.9295, 42.3546, 43.9428
YIQ	175.6920, 12.7910, 4.9750

# Conversions

## Conversions Part 2

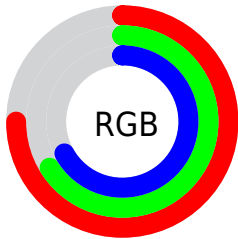
<b>Format</b>	<b>Color</b>
<b>RYB</b>	191, 169, 170
Decimal	12560810
CIELab	71.11, 8.13, 2.40
CIELCh	71, 8.479, 16.431
Yxy	42.3546, 0.3322, 0.3278
Android (android.graphics.Color)	4290750890 (0xFFBFA9AA)
YUV	175.6920, -2.8062, 13.4251
Hunter-Lab	65.0804, 3.8547, 5.5232

# Details

The Hex color **BFA9AA** is a light color, and the websafe version is hex **999999**. A complement of this color would be **A9BFBE**, and the grayscale version is **B0B0B0**.

A 20% lighter version of the original color is **F7E0E1**, and **897576** is the 20% darker color. If you saturate the color by 10%, you get **BF9698**, and if you desaturate by 10%, it is **BFBCBC**.

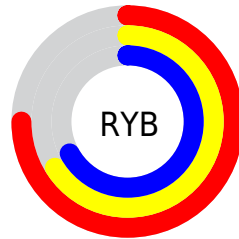
# Distribution



Red (75%)

Green (66%)

Blue (67%)



Red (75%)

Yellow (66%)

Blue (67%)

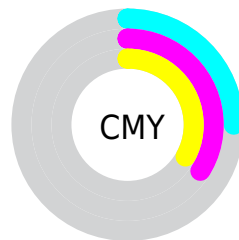


Cyan (0%)

Magenta (12%)

Yellow (11%)

Black (25%)



Cyan (25%)

Magenta (34%)

Yellow (33%)

# Brightness & Saturation Gradients

These gradients show how the Hex color BFA9AA changes by changing the brightness by 10 percent. The first figure shows a shift by +10% for each color and the second figure -10%.

Similar to the brightness gradients but the following saturation gradients show a change of the Hex color BFA9AA by changing the saturation by 10% instead.





BFA9AA



BFA9AA

FFFFFF



A48F90



F7E0E1



897576



FFDFE



705C5D



574546



402E2F



291A1B



170000



000000



BFA9AA



BFA9AA

 BF9698

 BFBCBC

 BF8386

 BFCFCE

 BF7073

 BFE2E1

 BF5D61

 BFF5F3

 BF4A4F

 BFFFFFF

 BF363D

 BF232A

 BF1018

 BF0009

# Harmonies

## Analogous

The Analogous color harmony consists of three colors that are next to each other on the color wheel.



BCA9B2



BFA9AA



BEAAA3

# Triad

The Triadic color harmony groups three colors that are evenly spaced from another and form a triangle on the color wheel.



BFA9AA



A7B1A3



A2B0BD

# Complementary

The Complementary color scheme is a pair of colors which are on the opposite of each other on the color wheel.



BFA9AA



A9BFBE

# Split Complementary

Split-complementary colors differ from the complementary color scheme. The scheme consists of three colors, the original color and two neighbors of the complement color.



9CB2B9



BFA9AA



9FB2AA

# Square

The Square scheme is like the rectangle color scheme, but the four colors are evenly spaced on the color wheel.



BFA9AA



B0AF9F



9BB3B2



ABADBD

# Rectangle

The Rectangle color scheme consists of four colors that form a rectangle on the color wheel.



BFA9AA



BAACA0



9BB3B2



A0B1BC

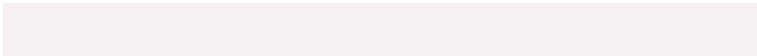


# Sweetspot

The Sweet Spot groups the original color and five complimentary colors.



BFA9AA



F7F0F0



BEA9BF



7D7878



FCFCFC



7D7D7D



# Same Dimension

The Same Dimension uses a secret algorithm to generate beautiful new colors.



BFA9AA



F7D5D6



BFB3A9



5E5555



9E0007



1F0001

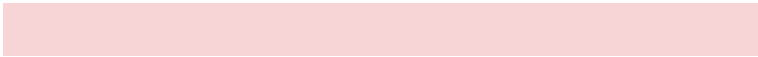


# Inverse Universe

The Inverse Universe completely reimagines the original color for something new.



BFA9AA



F7D5D6



A9B5BF



5E5555



9E0007



1F0001



# Previews

## White Background



This preview shows how the Hex color BFA9AA looks on a white background.

## Color Contrast Check

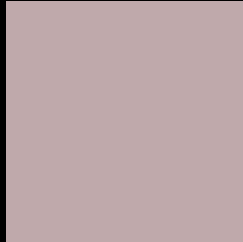
Large Text (above 18pt) WCAG AA × Fail

Any Text WCAG AA × Fail

Large Text (above 18pt) WCAG AAA × Fail

Any Text WCAG AAA × Fail

# Black Background



This preview shows how the Hex color BFA9AA looks on a black background.

## Color Contrast Check

Large Text (above 18pt) WCAG AA ✓ Pass

Any Text WCAG AA ✓ Pass

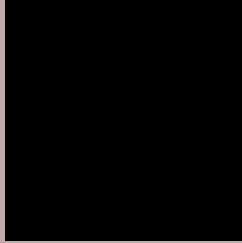
Large Text (above 18pt) WCAG AAA ✓ Pass

Any Text WCAG AAA ✓ Pass

If you want to check with other color combinations, try the [Color Contrast Checker](#).



## Hex BFA9AA Background



This preview shows how black text looks on a background with the Hex color BFA9AA.



This preview shows how white text looks on a background with the Hex color BFA9AA.

# Color Blindness Simulation

Color vision deficiency is a very complex topic, and I could not describe the different causes any better than Wikipedia does, so if you want to learn more, you should check out their [article about color blindness](#).

## Dichromacy





**Tritanopia**  
C0A7B4

# Trichromacy



**Original Color**  
BFA9AA

**Protanomaly**  
B7ACAB

**Deuteranomaly**  
C0A8AA

**Tritanomaly**  
C0A8B0

# Monochromacy



**Original Color**  
BFA9AA

**Achromatopsia**  
B0B0B0

**Achromatomaly**  
B5ADAE

# CSS Examples

## Text

The CSS property to change the color of the text to Hex BFA9AA is called "color". The color property can be set on classes, ids or directly on the HTML element.

This example shows how text in the color #BFA9AA looks like.

```
.text, #text, p{  
    color:#BFA9AA  
}
```

If you want to add a text shadow in that color use the text-shadow property, you can generate a text shadow directly with our [CSS Text Shadow Generator](#).

Here you see how black text with a 4 pixel #BFA9AA colored shadow looks like.

```
.shadow{ text-shadow: 4px 4px 2px #BFA9AA
}
```

## Border

The CSS property to change the border of an element to Hex BFA9AA is called "border". The border property can be set on classes, ids or directly on the HTML element.

This example shows the color as border, it can be applied via the CSS property "border" or "border-color".

```
.border, #border, table{ border:4px solid
#BFA9AA }
```

If only the border color should be changed use the property `border-color`.

```
.border{ border-color:#BFA9AA }
```

If you want to add a box shadow in that color use:

Here you see how a box with a 4 pixel #BFA9AA colored shadow looks like.

```
.boxshadow{ -moz-box-shadow:4px 4px 4px  
4px #BFA9AA; -webkit-box-shadow:4px 4px  
4px 4px #BFA9AA; box-shadow:4px 4px 4px  
4px #BFA9AA }
```

# Background

The CSS property to change the background color of an element to Hex BFA9AA is called "background". The background property can be set on classes, ids or directly on the HTML element.

```
.background, #background, body{  
background:#BFA9AA }
```

If only the background color should be changed can be used:

```
.background{ background-color:#BFA9AA }
```

This example shows the color as background, it is applied via the CSS property "background".

To optimize and compress your CSS code, you can use our [online CSS compressor and optimizer](#) based on csstidy. If you want to create a linear or radial gradient as background or border, check our [CSS Gradient Generator](#).



Hey! You found this booklet interesting? Support Converting Colors with the new Membership Option!

The pro membership hides all ads, plus gives you double the colors in the color bucket, and more awesome pro features!

**[Learn more, Memberships starting at \\$2.50/m!](#)**

**Follow me  
on Twitter!**

@ConvertingColor