

Converting Colors

Hex(C05481)

Have a look what the booklet for
Hex(C05481) contains.

Hex(C05481)	3
<i>Conversions</i>	4
<i>Details</i>	6
<i>Harmonies</i>	11
<i>Previews</i>	23
<i>Color Blindness Simulation</i>	26
<i>CSS Examples</i>	29

Color

Hex(C05481)

Conversions

Conversions Part 1

Format	Color
Hex	C05481
RGB	192, 84, 129
RGB Percent	75%, 33%, 51%
CMY	0.2471, 0.6706, 0.4941
CMYK	0.00, 0.56, 0.33, 0.25
HSL	335°, 46%, 54%
HSV	335°, 56%, 75%
XYZ	28.8710, 19.1321, 22.9401
YIQ	121.4220, 49.9230, 36.8910

Conversions

Conversions Part 2

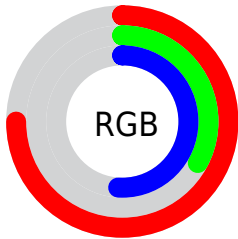
Format	Color
R_{YB}	192, 84, 129
Decimal	12604545
CIE _{Lab}	50.84, 48.00, -3.76
CIE _{LCh}	51, 48.145, 355.516
Yxy	19.1321, 0.4070, 0.2697
Android (android.graphics.Color)	4290794625 (0xFFC05481)
YUV	121.4220, 3.7360, 61.8969
Hunter-Lab	43.7402, 41.2745, -0.4771

Details

The Hex color **C05481** is a dark color, and the websafe version is hex **CC6699**. The color can be described as middle muted rose. A complement of this color would be **54C093**, and the grayscale version is **797979**.

A 20% lighter version of the original color is **FB8AB6**, and **871C50** is the 20% darker color. If you saturate the color by 10%, you get **C04176**, and if you desaturate by 10%, it is **C0678C**.

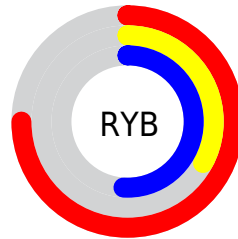
Distribution



Red (75%)

Green (33%)

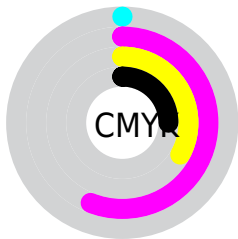
Blue (51%)



Red (75%)

Yellow (33%)

Blue (51%)

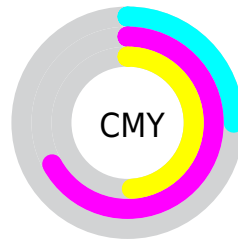


Cyan (0%)

Magenta (56%)

Yellow (33%)

Black (25%)



Cyan (25%)

Magenta (67%)

Yellow (49%)

Brightness & Saturation Gradients

These gradients show how the Hex color C05481 changes by changing the brightness by 10 percent. The first figure shows a shift by +10% for each color and the second figure -10%.

Similar to the brightness gradients but the following saturation gradients show a change of the Hex color C05481 by changing the saturation by 10% instead.

 C05481

 C05481

FFFFFF

 A33968

 FB8AB6

 871C50

 FFA5D1

 6B0039

 FFC1EE

 500024

 FFDEFF

 38000E

 FFFBFF

 130000

 000000

 C05481

 C05481

 C04176

 C0678C

 C02E6B

 C07A97

 C01A5F

 C08EA3

 C00754

 C0A1AE

 C00050

 C0B4B9

 C0C7C4

 C0DACF

 C0EEDB

 C0FFE6

Harmonies

Analogous

The Analogous color harmony consists of three colors that are next to each other on the color wheel.



A560A8



C05481



C35758

Triad

The Triadic color harmony groups three colors that are evenly spaced from another and form a triangle on the color wheel.



C05481



6D8129



0089BC

Complementary

The Complementary color scheme is a pair of colors which are on the opposite of each other on the color wheel.



C05481



54C093

Split Complementary

Split-complementary colors differ from the complementary color scheme. The scheme consists of three colors, the original color and two neighbors of the complement color.



008D9B



C05481



368948

Square

The Square scheme is like the rectangle color scheme, but the four colors are evenly spaced on the color wheel.



C05481



947521



008D71



0080CB

Rectangle

The Rectangle color scheme consists of four colors that form a rectangle on the color wheel.



C05481



BA6040



008D71



008BB3

Sweetspot

The Sweet Spot groups the original color and five complimentary colors.



C05481



FACFE1



9354C0



7D646E



FCFCFC



7D7D7D

Same Dimension

The Same Dimension uses a secret algorithm to generate beautiful new colors.



C05481



FA5097



C05D54



61575B



A10043



21000E

Inverse Universe

The Inverse Universe completely reimagines the original color for something new.



C05481



FA5097



54B7C0



61575B



A10043



21000E

Previews

White Background



This preview shows how the Hex color C05481 looks on a white background.

Color Contrast Check

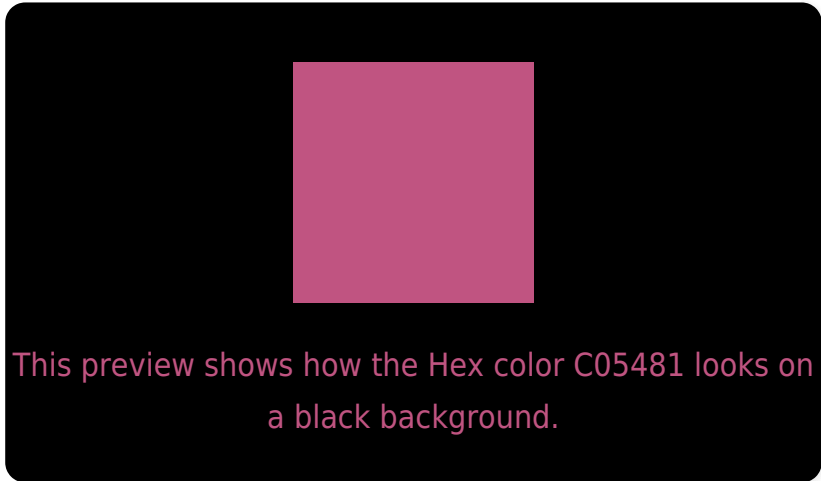
Large Text (above 18pt) WCAG AA ✓ Pass

Any Text WCAG AA × Fail

Large Text (above 18pt) WCAG AAA × Fail

Any Text WCAG AAA × Fail

Black Background



Color Contrast Check

Large Text (above 18pt) WCAG AA ✓ Pass

Any Text WCAG AA ✓ Pass

Large Text (above 18pt) WCAG AAA ✓ Pass

Any Text WCAG AAA × Fail

If you want to check with other color combinations, try the [Color Contrast Checker](#).

Hex C05481 Background



This preview shows how black text looks on a background with the Hex color C05481.




This preview shows how white text looks on a background with the Hex color C05481.

Color Blindness Simulation

Color vision deficiency is a very complex topic, and I could not describe the different causes any better than Wikipedia does, so if you want to learn more, you should check out their [article about color blindness](#).

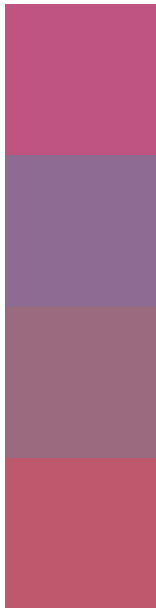
Dichromacy





Tritanopia
BD5B61

Trichromacy



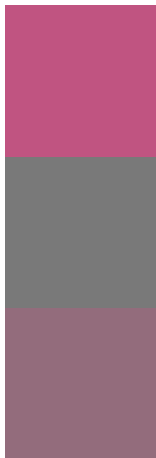
Original Color
C05481

Protanomaly
8E6B90

Deuteranomaly
9A6A7E

Tritanomaly
BE586D

Monochromacy



Original Color
C05481

Achromatopsia
797979

Achromatomaly
936C7C

CSS Examples

Text

The CSS property to change the color of the text to Hex C05481 is called "color". The color property can be set on classes, ids or directly on the HTML element.

This example shows how text in the color #C05481 looks like.

```
.text, #text, p{  
    color:#C05481  
}
```

If you want to add a text shadow in that color use the text-shadow property, you can generate a text shadow directly with our [CSS Text Shadow Generator](#).

Here you see how black text with a 4 pixel #C05481 colored shadow looks like.

```
.shadow{ text-shadow: 4px 4px 2px #C05481
}
```

Border

The CSS property to change the border of an element to Hex C05481 is called "border". The border property can be set on classes, ids or directly on the HTML element.

This example shows the color as border, it can be applied via the CSS property "border" or "border-color".

```
.border, #border, table{ border:4px solid
#C05481 }
```

If only the border color should be changed use the property `border-color`.

```
.border{ border-color:#C05481 }
```

If you want to add a box shadow in that color use:

Here you see how a box with a 4 pixel #C05481 colored shadow looks like.

```
.boxshadow{ -moz-box-shadow:4px 4px 4px  
4px #C05481; -webkit-box-shadow:4px 4px  
4px 4px #C05481; box-shadow:4px 4px 4px  
4px #C05481 }
```

Background

The CSS property to change the background color of an element to Hex C05481 is called "background". The background property can be set on classes, ids or directly on the HTML element.

```
.background, #background, body{  
background:#C05481 }
```

If only the background color should be changed can be used:

```
.background{ background-color:#C05481 }
```

This example shows the color as background, it is applied via the CSS property "background".

To optimize and compress your CSS code, you can use our [online CSS compressor and optimizer](#) based on csstidy. If you want to create a linear or radial gradient as background or border, check our [CSS Gradient Generator](#).

Hey! You found this booklet interesting? Support Converting Colors with the new Membership Option!

The pro membership hides all ads, plus gives you double the colors in the color bucket, and more awesome pro features!

[Learn more, Memberships starting at \\$2.50/m!](#)

**Follow me
on Twitter!**

@ConvertingColor