

# Converting Colors

Hex(C07675)

Have a look what the booklet for  
Hex(C07675) contains.

<b>Hex(C07675)</b> .....	3
<b><i>Conversions</i></b> .....	4
<b><i>Details</i></b> .....	6
<b><i>Harmonies</i></b> .....	11
<b><i>Previews</i></b> .....	23
<b><i>Color Blindness Simulation</i></b> .....	26
<b><i>CSS Examples</i></b> .....	29

**Color**

**Hex(C07675)**

# Conversions

## Conversions Part 1

<b>Format</b>	<b>Color</b>
Hex	C07675
RGB	192, 118, 117
RGB Percent	75%, 46%, 46%
CMY	0.2471, 0.5373, 0.5412
CMYK	0.00, 0.39, 0.39, 0.25
HSL	1°, 37%, 61%
HSV	1°, 39%, 75%
XYZ	31.4275, 25.4477, 20.0851
YIQ	140.0120, 44.4250, 15.3770

# Conversions

## Conversions Part 2

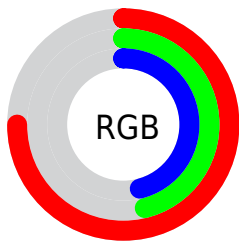
<b>Format</b>	<b>Color</b>
<b>R<sub>YB</sub></b>	192, 118, 117
Decimal	12613237
CIE <sub>Lab</sub>	57.51, 28.90, 12.89
CIE <sub>LCh</sub>	58, 31.644, 24.037
Yxy	25.4477, 0.4084, 0.3307
Android (android.graphics.Color)	4290803317 (0xFFC07675)
YUV	140.0120, -11.3449, 45.5935
Hunter-Lab	50.4457, 22.9251, 11.7055

# Details

The Hex color **C07675** is a dark color, and the websafe version is hex **996666**. A complement of this color would be **75BFC0**, and the grayscale version is **8C8C8C**.

A 20% lighter version of the original color is **FAABA9**, and **884445** is the 20% darker color. If you saturate the color by 10%, you get **C06362**, and if you desaturate by 10%, it is **C08988**.

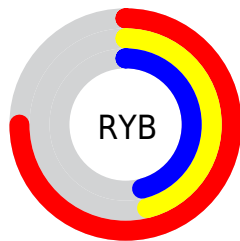
# Distribution



Red (75%)

Green (46%)

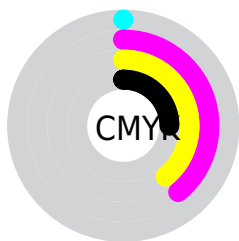
Blue (46%)



Red (75%)

Yellow (46%)

Blue (46%)

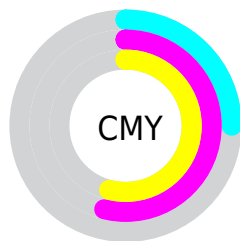


Cyan (0%)

Magenta (39%)

Yellow (39%)

Black (25%)



Cyan (25%)

Magenta (54%)

Yellow (54%)

# Brightness & Saturation Gradients

These gradients show how the Hex color C07675 changes by changing the brightness by 10 percent. The first figure shows a shift by +10% for each color and the second figure -10%.

Similar to the brightness gradients but the following saturation gradients show a change of the Hex color C07675 by changing the saturation by 10% instead.



 C07675

 C07675

FFFFFF

 A45D5C

 FAABA9

 884445

 FFC7C4

 6D2C2F

 FFE3E0

 52151A

FFFFFFD

 3A0000

 200001

 000000

 C07675

 C07675

 C06362

 C08988

 C0504F

 C09C9B

 C03D3B

 C0AF4F

 C02A28

 C0C2C2

 C01715

 C0D5D5

 C00402

 C0E8E8

 C00300

 C0FBFB

 C0FFFF

# Harmonies

## Analogous

The Analogous color harmony consists of three colors that are next to each other on the color wheel.



BC7591



C07675



B67D5E

# Triad

The Triadic color harmony groups three colors that are evenly spaced from another and form a triangle on the color wheel.



C07675



669569



598FC1

# Complementary

The Complementary color scheme is a pair of colors which are on the opposite of each other on the color wheel.



C07675



75BFC0

# Split Complementary

Split-complementary colors differ from the complementary color scheme. The scheme consists of three colors, the original color and two neighbors of the complement color.



2A95B6



C07675



429983

# Square

The Square scheme is like the rectangle color scheme, but the four colors are evenly spaced on the color wheel.



C07675



868F57



1D99A0



8585BC

# Rectangle

The Rectangle color scheme consists of four colors that form a rectangle on the color wheel.



C07675



A98355



1D99A0



4991BF



# Sweetspot

The Sweet Spot groups the original color and five complimentary colors.



C07675



FADCDC



C075C0



7D6C6B



FCFCFC



7D7D7D



# Same Dimension

The Same Dimension uses a secret algorithm to generate beautiful new colors.



C07675



FA8684



C09B75



615757



A10200



210000



# Inverse Universe

The Inverse Universe completely reimagines the original color for something new.



75BFC0



84F8FA



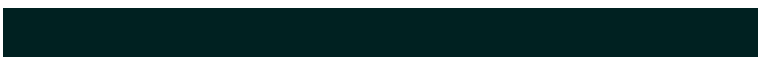
759BC0



576161



009FA1

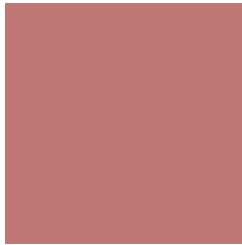


002121



# Previews

## White Background



This preview shows how the Hex color C07675 looks on a white background.

## Color Contrast Check

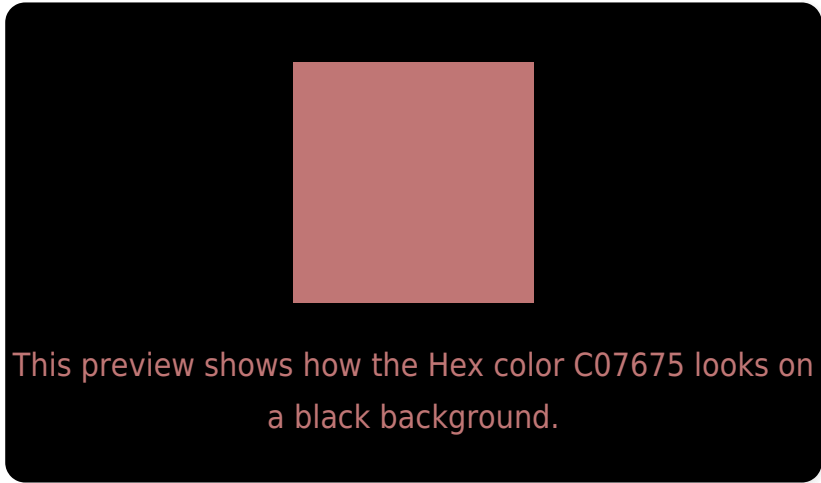
Large Text (above 18pt) WCAG AA ✓ Pass

Any Text WCAG AA × Fail

Large Text (above 18pt) WCAG AAA × Fail

Any Text WCAG AAA × Fail

# Black Background



## Color Contrast Check

Large Text (above 18pt) WCAG AA ✓ Pass

Any Text WCAG AA ✓ Pass

Large Text (above 18pt) WCAG AAA ✓ Pass

Any Text WCAG AAA × Fail

If you want to check with other color combinations, try the [Color Contrast Checker](#).



## Hex C07675 Background



This preview shows how black text looks on a background with the Hex color C07675.

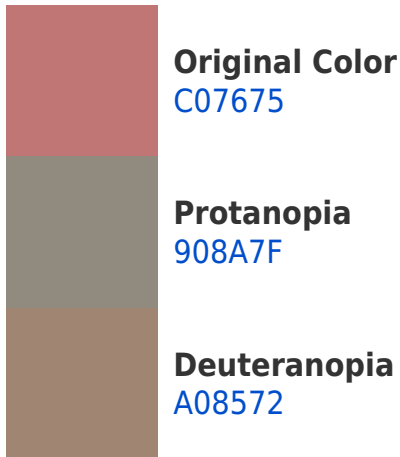


This preview shows how white text looks on a background with the Hex color C07675.

# Color Blindness Simulation

Color vision deficiency is a very complex topic, and I could not describe the different causes any better than Wikipedia does, so if you want to learn more, you should check out their [article about color blindness](#).

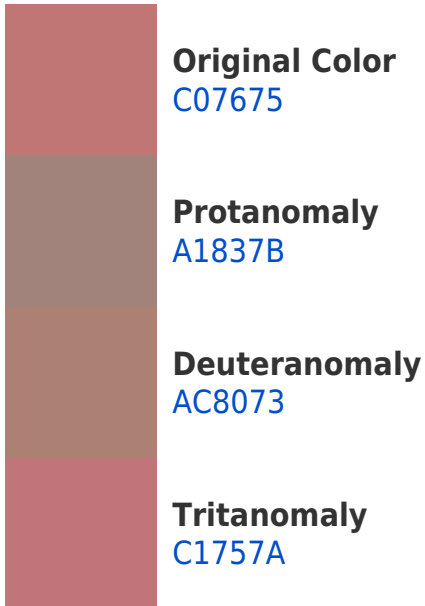
## Dichromacy





**Tritanopia**  
C1757D

# Trichromacy



# Monochromacy



# CSS Examples

## Text

The CSS property to change the color of the text to Hex C07675 is called "color". The color property can be set on classes, ids or directly on the HTML element.

This example shows how text in the color #C07675 looks like.

```
.text, #text, p{  
    color:#C07675  
}
```

If you want to add a text shadow in that color use the text-shadow property, you can generate a text shadow directly with our [CSS Text Shadow Generator](#).

Here you see how black text with a 4 pixel #C07675 colored shadow looks like.

```
.shadow{ text-shadow: 4px 4px 2px #C07675
}
```

## Border

The CSS property to change the border of an element to Hex C07675 is called "border". The border property can be set on classes, ids or directly on the HTML element.

This example shows the color as border, it can be applied via the CSS property "border" or "border-color".

```
.border, #border, table{ border:4px solid
#C07675 }
```

If only the border color should be changed use the property `border-color`.

```
.border{ border-color:#C07675 }
```

If you want to add a box shadow in that color use:

Here you see how a box with a 4 pixel #C07675 colored shadow looks like.

```
.boxshadow{ -moz-box-shadow:4px 4px 4px  
4px #C07675; -webkit-box-shadow:4px 4px  
4px 4px #C07675; box-shadow:4px 4px 4px  
4px #C07675 }
```

# Background

The CSS property to change the background color of an element to Hex C07675 is called "background". The background property can be set on classes, ids or directly on the HTML element.

```
.background, #background, body{  
background:#C07675 }
```

If only the background color should be changed can be used:

```
.background{ background-color:#C07675 }
```

This example shows the color as background, it is applied via the CSS property "background".

To optimize and compress your CSS code, you can use our [online CSS compressor and optimizer](#) based on csstidy. If you want to create a linear or radial gradient as background or border, check our [CSS Gradient Generator](#).



Hey! You found this booklet interesting? Support Converting Colors with the new Membership Option!

The pro membership hides all ads, plus gives you double the colors in the color bucket, and more awesome pro features!

**[Learn more, Memberships starting at \\$2.50/m!](#)**

**Follow me  
on Twitter!**

@ConvertingColor