

Converting Colors

Hex(C08C82)

Have a look what the booklet for
Hex(C08C82) contains.

Hex(C08C82)	3
<i>Conversions</i>	4
<i>Details</i>	6
<i>Harmonies</i>	11
<i>Previews</i>	23
<i>Color Blindness Simulation</i>	26
<i>CSS Examples</i>	29

Color

Hex(C08C82)

Conversions

Conversions Part 1

Format	Color
Hex	C08C82
RGB	192, 140, 130
RGB Percent	75%, 55%, 51%
CMY	0.2471, 0.4510, 0.4902
CMYK	0.00, 0.27, 0.32, 0.25
HSL	10°, 33%, 63%
HSV	10°, 32%, 75%
XYZ	35.1456, 31.5743, 25.3612
YIQ	154.4080, 34.2020, 7.9140

Conversions

Conversions Part 2

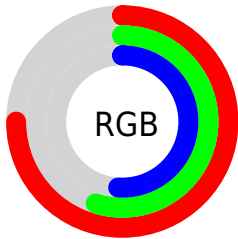
Format	Color
R _Y B	192, 142, 130
Decimal	12618882
CIE Lab	62.99, 18.41, 13.13
CIE LCh	63, 22.612, 35.509
Yxy	31.5743, 0.3817, 0.3429
Android (android.graphics.Color)	4290808962 (0xFFC08C82)
YUV	154.4080, -12.0331, 32.9682
Hunter-Lab	56.1910, 13.3113, 12.5739

Details

The Hex color **C08C82** is a light color, and the websafe version is hex **CC9999**. A complement of this color would be **82B6C0**, and the grayscale version is **9B9B9B**.

A 20% lighter version of the original color is **FAC2B7**, and **895A51** is the 20% darker color. If you saturate the color by 10%, you get **C07C6F**, and if you desaturate by 10%, it is **C09C95**.

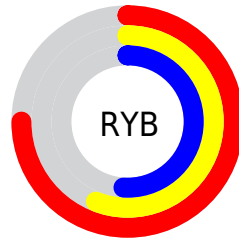
Distribution



Red (75%)

Green (55%)

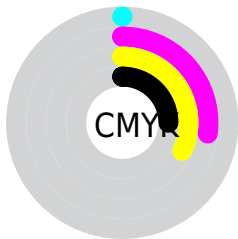
Blue (51%)



Red (75%)

Yellow (56%)

Blue (51%)

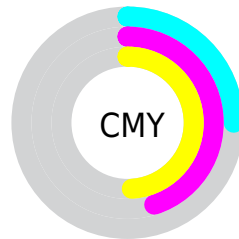


Cyan (0%)

Magenta (27%)

Yellow (32%)

Black (25%)



Cyan (25%)

Magenta (45%)

Yellow (49%)

Brightness & Saturation Gradients

These gradients show how the Hex color C08C82 changes by changing the brightness by 10 percent. The first figure shows a shift by +10% for each color and the second figure -10%.

Similar to the brightness gradients but the following saturation gradients show a change of the Hex color C08C82 by changing the saturation by 10% instead.



C08C82



C08C82

FFFFFF



A47269



FAC2B7



895A51



FFDED3



6F423A



FFFAEF



552B24



3C160F



260000



000000



C08C82



C08C82



C07C6F



C09C95

 C06C5C

 C0ACA8

 C05C48

 C0BCBC

 C04C35

 C0CCCF

 C03B22

 C0DDE2

 C02B0F

 C0EDF5

 C01F00

 C0FDFE

 C0FFFF

Harmonies

Analogous

The Analogous color harmony consists of three colors that are next to each other on the color wheel.



C08A95



C08C82



B59274

Triad

The Triadic color harmony groups three colors that are evenly spaced from another and form a triangle on the color wheel.



C08C82



77A287



8599C0

Complementary

The Complementary color scheme is a pair of colors which are on the opposite of each other on the color wheel.



C08C82



82B6C0

Split Complementary

Split-complementary colors differ from the complementary color scheme. The scheme consists of three colors, the original color and two neighbors of the complement color.



6B9FBC



C08C82



64A49C

Square

The Square scheme is like the rectangle color scheme, but the four colors are evenly spaced on the color wheel.



C08C82



8D9E77



5EA3AF



A092B9

Rectangle

The Rectangle color scheme consists of four colors that form a rectangle on the color wheel.



C08C82



AA9671



5EA3AF



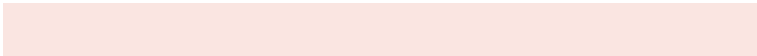
7C9BC0

Sweetspot

The Sweet Spot groups the original color and five complimentary colors.



C08C82



FAE5E1



C082B7



7D706E



FCFCFC



7D7D7D

Same Dimension

The Same Dimension uses a secret algorithm to generate beautiful new colors.



C08C82



FAA898



C0AA82



615957



A11A00



210500

Inverse Universe

The Inverse Universe completely reimagines the original color for something new.



82B6C0



98EAFA



8298C0



575F61



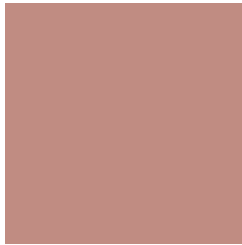
0087A1



001C21

Previews

White Background



This preview shows how the Hex color C08C82 looks on a white background.

Color Contrast Check

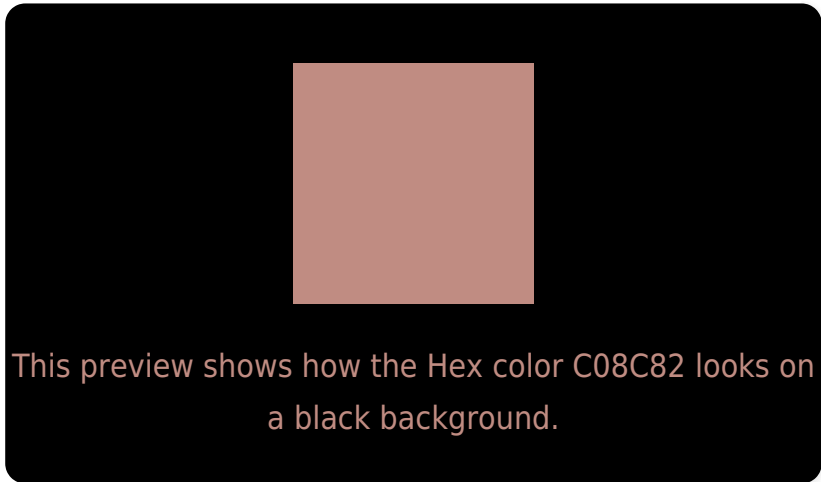
Large Text (above 18pt) WCAG AA × Fail

Any Text WCAG AA × Fail

Large Text (above 18pt) WCAG AAA × Fail

Any Text WCAG AAA × Fail

Black Background



Color Contrast Check

Large Text (above 18pt) WCAG AA ✓ Pass

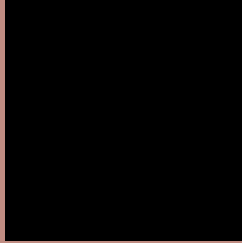
Any Text WCAG AA ✓ Pass

Large Text (above 18pt) WCAG AAA ✓ Pass

Any Text WCAG AAA ✓ Pass

If you want to check with other color combinations, try the [Color Contrast Checker](#).

Hex C08C82 Background



This preview shows how black text looks on a background with the Hex color C08C82.



This preview shows how white text looks on a background with the Hex color C08C82.

Color Blindness Simulation

Color vision deficiency is a very complex topic, and I could not describe the different causes any better than Wikipedia does, so if you want to learn more, you should check out their [article about color blindness](#).

Dichromacy



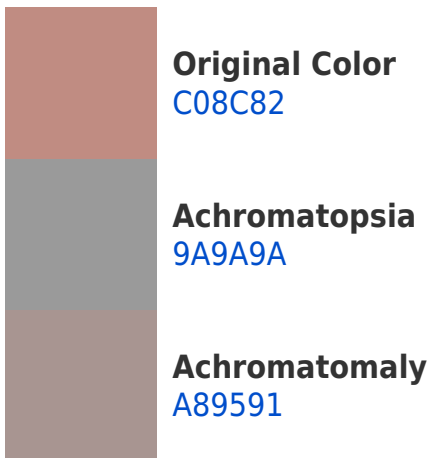


Tritanopia
C28994

Trichromacy



Monochromacy



CSS Examples

Text

The CSS property to change the color of the text to Hex C08C82 is called "color". The color property can be set on classes, ids or directly on the HTML element.

This example shows how text in the color #C08C82 looks like.

```
.text, #text, p{  
    color:#C08C82  
}
```

If you want to add a text shadow in that color use the text-shadow property, you can generate a text shadow directly with our [CSS Text Shadow Generator](#).

Here you see how black text with a 4 pixel #C08C82 colored shadow looks like.

```
.shadow{ text-shadow: 4px 4px 2px #C08C82
}
```

Border

The CSS property to change the border of an element to Hex C08C82 is called "border". The border property can be set on classes, ids or directly on the HTML element.

This example shows the color as border, it can be applied via the CSS property "border" or "border-color".

```
.border, #border, table{ border:4px solid
#C08C82 }
```

If only the border color should be changed use the property `border-color`.

```
.border{ border-color:#C08C82 }
```

If you want to add a box shadow in that color use:

Here you see how a box with a 4 pixel #C08C82 colored shadow looks like.

```
.boxshadow{ -moz-box-shadow:4px 4px 4px  
4px #C08C82; -webkit-box-shadow:4px 4px  
4px 4px #C08C82; box-shadow:4px 4px 4px  
4px #C08C82 }
```

Background

The CSS property to change the background color of an element to Hex C08C82 is called "background". The background property can be set on classes, ids or directly on the HTML element.

```
.background, #background, body{  
background:#C08C82 }
```

If only the background color should be changed can be used:

```
.background{ background-color:#C08C82 }
```

This example shows the color as background, it is applied via the CSS property "background".

To optimize and compress your CSS code, you can use our [online CSS compressor and optimizer](#) based on csstidy. If you want to create a linear or radial gradient as background or border, check our [CSS Gradient Generator](#).

Hey! You found this booklet interesting? Support Converting Colors with the new Membership Option!

The pro membership hides all ads, plus gives you double the colors in the color bucket, and more awesome pro features!

[Learn more, Memberships starting at \\$2.50/m!](#)

**Follow me
on Twitter!**

@ConvertingColor