

# Converting Colors

Hex(C08E90)

Have a look what the booklet for  
Hex(C08E90) contains.

<b>Hex(C08E90)</b> .....	3
<b><i>Conversions</i></b> .....	4
<b><i>Details</i></b> .....	6
<b><i>Harmonies</i></b> .....	11
<b><i>Previews</i></b> .....	23
<b><i>Color Blindness Simulation</i></b> .....	26
<b><i>CSS Examples</i></b> .....	29

# **Color**

**Hex(C08E90)**

# Conversions

## Conversions Part 1

<b>Format</b>	<b>Color</b>
Hex	C08E90
RGB	192, 142, 144
RGB Percent	75%, 56%, 56%
CMY	0.2471, 0.4431, 0.4353
CMYK	0.00, 0.26, 0.25, 0.25
HSL	358°, 28%, 65%
HSV	358°, 26%, 75%
XYZ	36.4453, 32.5661, 30.7506
YIQ	157.1780, 29.1580, 11.2220

# Conversions

## Conversions Part 2

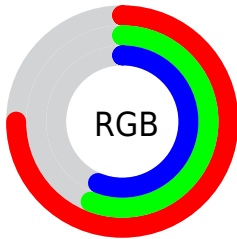
Format	Color
<a href="#">RYB</a>	<a href="#">192, 142, 144</a>
Decimal	<a href="#">12619408</a>
CIELab	<a href="#">63.81, 19.25, 6.38</a>
CIElCh	<a href="#">64, 20.279, 18.342</a>
Yxy	<a href="#">32.5661, 0.3653, 0.3264</a>
Android (android.graphics.Color)	<a href="#">4290809488 (0xFFC08E90)</a>
YUV	<a href="#">157.1780, -6.4968, 30.5389</a>
Hunter-Lab	<a href="#">57.0667, 14.1311, 7.9981</a>

# Details

The Hex color **C08E90** is a light color, and the websafe version is hex **CC9999**. A complement of this color would be **8EC0BE**, and the grayscale version is **9D9D9D**.

A 20% lighter version of the original color is **F9C4C6**, and **895B5E** is the 20% darker color. If you saturate the color by 10%, you get **C07B7E**, and if you desaturate by 10%, it is **C0A1A2**.

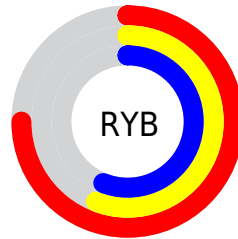
# Distribution



Red (75%)

Green (56%)

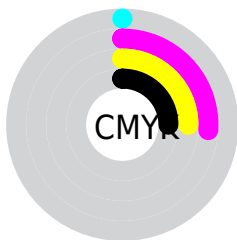
Blue (56%)



Red (75%)

Yellow (56%)

Blue (56%)

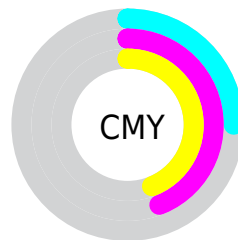


Cyan (0%)

Magenta (26%)

Yellow (25%)

Black (25%)



Cyan (25%)

Magenta (44%)

Yellow (44%)

# Brightness & Saturation Gradients

These gradients show how the Hex color C08E90 changes by changing the brightness by 10 percent. The first figure shows a shift by +10% for each color and the second figure -10%.

Similar to the brightness gradients but the following saturation gradients show a change of the Hex color C08E90 by changing the saturation by 10% instead.



 C08E90

 C08E90

FFFFFF

 A47476

 F9C4C6

 895B5E

 FFE0E2

 6F4446

 FFFDFE

 562D30

 3D171B

 280000

 000000

 C08E90

 C08E90

 C07B7E

 C0A1A2

 C0686B

 C0B4B5

 C05459

 C0C8C7

 C04146

 C0DBDA

 C02E34

 C0EEEC

 C01B21

 C0FFFF

 C0080F

 C00008

# Harmonies

## Analogous

The Analogous color harmony consists of three colors that are next to each other on the color wheel.



BA8EA2



C08E90



BC9180

# Triad

The Triadic color harmony groups three colors that are evenly spaced from another and form a triangle on the color wheel.



C08E90



88A282



7C9EBD

# Complementary

The Complementary color scheme is a pair of colors which are on the opposite of each other on the color wheel.



C08E90



8EC0BE

# Split Complementary

Split-complementary colors differ from the complementary color scheme. The scheme consists of three colors, the original color and two neighbors of the complement color.



6BA3B5



C08E90



75A493

# Square

The Square scheme is like the rectangle color scheme, but the four colors are evenly spaced on the color wheel.



C08E90



9D9D78



69A5A5



9498BD

# Rectangle

The Rectangle color scheme consists of four colors that form a rectangle on the color wheel.



C08E90



B49579



69A5A5



75A0BC

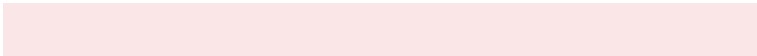


# Sweetspot

The Sweet Spot groups the original color and five complimentary colors.



C08E90



FAE6E7



BD8EC0



7D7071



FCFCFC



7D7D7D



# Same Dimension

The Same Dimension uses a secret algorithm to generate beautiful new colors.



C08E90



FAACB0



C0A58E



615758



A10006



210001



# Inverse Universe

The Inverse Universe completely reimagines the original color for something new.



C08E90



FAACB0



8EAAC0



615758



A10006

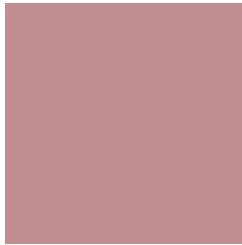


210001



# Previews

## White Background



This preview shows how the Hex color C08E90 looks on a white background.

## Color Contrast Check

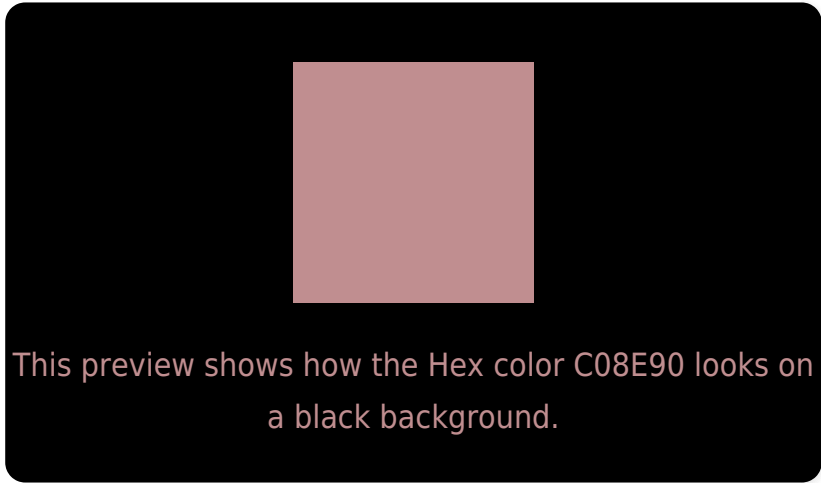
Large Text (above 18pt) WCAG AA × Fail

Any Text WCAG AA × Fail

Large Text (above 18pt) WCAG AAA × Fail

Any Text WCAG AAA × Fail

# Black Background



## Color Contrast Check

Large Text (above 18pt) WCAG AA ✓ Pass

Any Text WCAG AA ✓ Pass

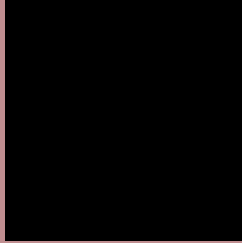
Large Text (above 18pt) WCAG AAA ✓ Pass

Any Text WCAG AAA ✓ Pass

If you want to check with other color combinations, try the [Color Contrast Checker](#).



## Hex C08E90 Background



This preview shows how black text looks on a background with the Hex color C08E90.



This preview shows how white text looks on a background with the Hex color C08E90.

# Color Blindness Simulation

Color vision deficiency is a very complex topic, and I could not describe the different causes any better than Wikipedia does, so if you want to learn more, you should check out their [article about color blindness](#).


## Dichromacy



**Original Color**  
C08E90

**Protanopia**  
9F9A97

**Deuteranopia**  
AE958F



**Tritanopia**  
C18D98

# Trichromacy



**Original Color**  
C08E90

**Protanomaly**  
AB9694

**Deuteranomaly**  
B5928F

**Tritanomaly**  
C18D95

# Monochromacy



**Original Color**  
C08E90

**Achromatopsia**  
9D9D9D

**Achromatomaly**  
AA9898

# CSS Examples

## Text

The CSS property to change the color of the text to Hex C08E90 is called "color". The color property can be set on classes, ids or directly on the HTML element.

This example shows how text in the color #C08E90 looks like.

```
.text, #text, p{  
    color:#C08E90  
}
```

If you want to add a text shadow in that color use the text-shadow property, you can generate a text shadow directly with our [CSS Text Shadow Generator](#).

Here you see how black text with a 4 pixel #C08E90 colored shadow looks like.

```
.shadow{ text-shadow: 4px 4px 2px #C08E90  
}
```

## Border

The CSS property to change the border of an element to Hex C08E90 is called "border". The border property can be set on classes, ids or directly on the HTML element.

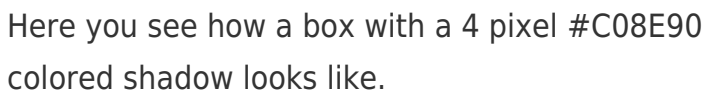
This example shows the color as border, it can be applied via the CSS property "border" or "border-color".

```
.border, #border, table{ border:4px solid  
#C08E90 }
```

If only the border color should be changed use the property `border-color`.

```
.border{ border-color:#C08E90 }
```

If you want to add a box shadow in that color use:



Here you see how a box with a 4 pixel #C08E90 colored shadow looks like.

```
.boxshadow{ -moz-box-shadow:4px 4px 4px  
4px #C08E90; -webkit-box-shadow:4px 4px  
4px 4px #C08E90; box-shadow:4px 4px 4px  
4px #C08E90 }
```

# Background

The CSS property to change the background color of an element to Hex C08E90 is called "background". The background property can be set on classes, ids or directly on the HTML element.

```
.background, #background, body{  
background:#C08E90 }
```

If only the background color should be changed can be used:

```
.background{ background-color:#C08E90 }
```

This example shows the color as background, it is applied via the CSS property "background".

To optimize and compress your CSS code, you can use our [online CSS compressor and optimizer](#) based on csstidy. If you want to create a linear or radial gradient as background or border, check our [CSS Gradient Generator](#).



Hey! You found this booklet interesting? Support Converting Colors with the new Membership Option!

The pro membership hides all ads, plus gives you double the colors in the color bucket, and more awesome pro features!

**[Learn more, Memberships starting at \\$2.50/m!](#)**

**Follow me  
on Twitter!**

@ConvertingColor