

Converting Colors

Hex(C09890)

Have a look what the booklet for
Hex(C09890) contains.

Hex(C09890)	3
<i>Conversions</i>	4
<i>Details</i>	6
<i>Harmonies</i>	11
<i>Previews</i>	23
<i>Color Blindness Simulation</i>	26
<i>CSS Examples</i>	29

Color

Hex(C09890)

Conversions

Conversions Part 1

Format	Color
Hex	C09890
RGB	192, 152, 144
RGB Percent	75%, 60%, 56%
CMY	0.2471, 0.4039, 0.4353
CMYK	0.00, 0.21, 0.25, 0.25
HSL	10°, 28%, 66%
HSV	10°, 25%, 75%
XYZ	38.0005, 35.6766, 31.2690
YIQ	163.0480, 26.4080, 5.9920

Conversions

Conversions Part 2

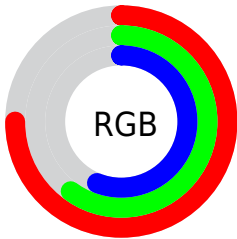
Format	Color
RYB	192, 154, 144
Decimal	12621968
CIELab	66.27, 13.72, 9.90
CIElCh	66, 16.920, 35.798
Yxy	35.6766, 0.3621, 0.3400
Android (android.graphics.Color)	4290812048 (0xFFC09890)
YUV	163.0480, -9.3907, 25.3909
Hunter-Lab	59.7299, 9.0356, 10.7722

Details

The Hex color **C09890** is a light color, and the websafe version is hex **CC9999**. A complement of this color would be **90B8C0**, and the grayscale version is **A3A3A3**.

A 20% lighter version of the original color is **F9CEC6**, and **8A655E** is the 20% darker color. If you saturate the color by 10%, you get **C0887D**, and if you desaturate by 10%, it is **C0A8A3**.

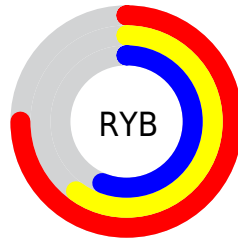
Distribution



Red (75%)

Green (60%)

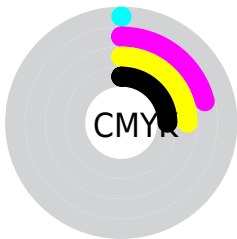
Blue (56%)



Red (75%)

Yellow (60%)

Blue (56%)

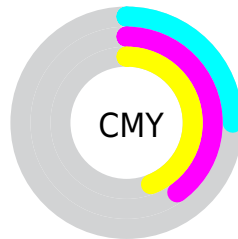


Cyan (0%)

Magenta (21%)

Yellow (25%)

Black (25%)



Cyan (25%)

Magenta (40%)

Yellow (44%)

Brightness & Saturation Gradients

These gradients show how the Hex color C09890 changes by changing the brightness by 10 percent. The first figure shows a shift by +10% for each color and the second figure -10%.

Similar to the brightness gradients but the following saturation gradients show a change of the Hex color C09890 by changing the saturation by 10% instead.

 C09890

 C09890

FFFFFF

 A47E76

 F9CEC6

 8A655E

 FFEBE2

 704D46

FFFFFFE

 563630

 3E201B

 280B00

 000000

 C09890

 C09890

 C0887D

 C0A8A3

 C0786A

 C0B8B6

 C06856

 C0C8CA

 C05843

 C0D8DD

 C04830

 C0E8F0

 C0381D

 C0F8FF

 C0280A

 C0FFFF

 C02000

Harmonies

Analogous

The Analogous color harmony consists of three colors that are next to each other on the color wheel.



C0969F



C09890



B89C86

Triad

The Triadic color harmony groups three colors that are evenly spaced from another and form a triangle on the color wheel.



C09890



88A994



94A1BF

Complementary

The Complementary color scheme is a pair of colors which are on the opposite of each other on the color wheel.



C09890



90B8C0

Split Complementary

Split-complementary colors differ from the complementary color scheme. The scheme consists of three colors, the original color and two neighbors of the complement color.



82A6BC



C09890



7CAAA4

Square

The Square scheme is like the rectangle color scheme, but the four colors are evenly spaced on the color wheel.



C09890



99A688



79A9B2



A89CBA

Rectangle

The Rectangle color scheme consists of four colors that form a rectangle on the color wheel.



C09890



AF9F83



79A9B2



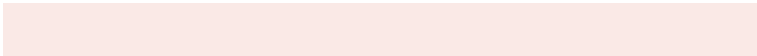
8DA3BF

Sweetspot

The Sweet Spot groups the original color and five complimentary colors.



C09890



FAE9E6



C090B8



7D7370



FCFCFC



7D7D7D

Same Dimension

The Same Dimension uses a secret algorithm to generate beautiful new colors.



C09890



FABBAF



C0B090



615957



A11B00



210600

Inverse Universe

The Inverse Universe completely reimagines the original color for something new.



90B8C0



AFEDFA



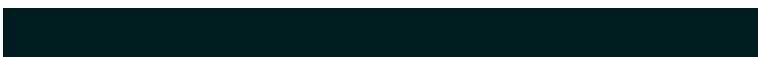
90A0C0



575F61



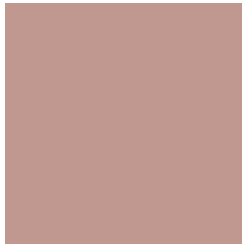
0086A1



001C21

Previews

White Background



This preview shows how the Hex color C09890 looks on a white background.

Color Contrast Check

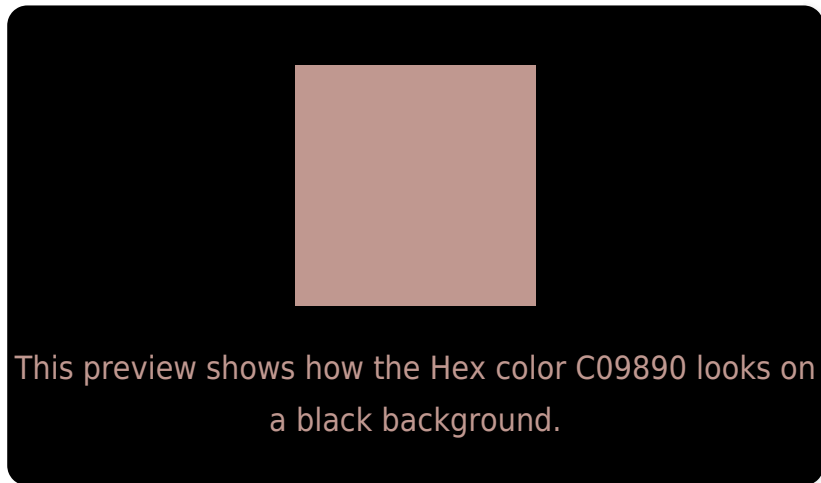
Large Text (above 18pt) WCAG AA × Fail

Any Text WCAG AA × Fail

Large Text (above 18pt) WCAG AAA × Fail

Any Text WCAG AAA × Fail

Black Background



Color Contrast Check

Large Text (above 18pt) WCAG AA ✓ Pass

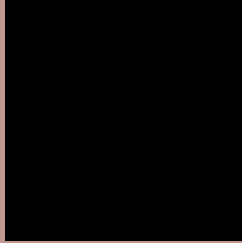
Any Text WCAG AA ✓ Pass

Large Text (above 18pt) WCAG AAA ✓ Pass

Any Text WCAG AAA ✓ Pass

If you want to check with other color combinations, try the [Color Contrast Checker](#).

Hex C09890 Background



This preview shows how black text looks on a background with the Hex color C09890.



This preview shows how white text looks on a background with the Hex color C09890.

Color Blindness Simulation

Color vision deficiency is a very complex topic, and I could not describe the different causes any better than Wikipedia does, so if you want to learn more, you should check out their [article about color blindness](#).

Dichromacy



Original Color
C09890

Protanopia
A7A195

Deuteranopia
B79B8F



Tritanopia
C295A1

Trichromacy



Original Color
C09890

Protanomaly
B09E93

Deuteranomaly
BA9A8F

Tritanomaly
C1969B

Monochromacy



Original Color
C09890

Achromatopsia
A3A3A3

Achromatomaly
AE9F9C

CSS Examples

Text

The CSS property to change the color of the text to Hex C09890 is called "color". The color property can be set on classes, ids or directly on the HTML element.

This example shows how text in the color #C09890 looks like.

```
.text, #text, p{  
    color:#C09890  
}
```

If you want to add a text shadow in that color use the text-shadow property, you can generate a text shadow directly with our [CSS Text Shadow Generator](#).

Here you see how black text with a 4 pixel #C09890 colored shadow looks like.

```
.shadow{ text-shadow: 4px 4px 2px #C09890
}
```

Border

The CSS property to change the border of an element to Hex C09890 is called "border". The border property can be set on classes, ids or directly on the HTML element.

This example shows the color as border, it can be applied via the CSS property "border" or "border-color".

```
.border, #border, table{ border:4px solid
#C09890 }
```

If only the border color should be changed use the property `border-color`.

```
.border{ border-color:#C09890 }
```

If you want to add a box shadow in that color use:

Here you see how a box with a 4 pixel #C09890 colored shadow looks like.

```
.boxshadow{ -moz-box-shadow:4px 4px 4px  
4px #C09890; -webkit-box-shadow:4px 4px  
4px 4px #C09890; box-shadow:4px 4px 4px  
4px #C09890 }
```

Background

The CSS property to change the background color of an element to Hex C09890 is called "background". The background property can be set on classes, ids or directly on the HTML element.

```
.background, #background, body{  
background:#C09890 }
```

If only the background color should be changed can be used:

```
.background{ background-color:#C09890 }
```

This example shows the color as background, it is applied via the CSS property "background".

To optimize and compress your CSS code, you can use our [online CSS compressor and optimizer](#) based on csstidy. If you want to create a linear or radial gradient as background or border, check our [CSS Gradient Generator](#).

Hey! You found this booklet interesting? Support Converting Colors with the new Membership Option!

The pro membership hides all ads, plus gives you double the colors in the color bucket, and more awesome pro features!

[Learn more, Memberships starting at \\$2.50/m!](#)

**Follow me
on Twitter!**

@ConvertingColor