

Converting Colors

Hex(C09F72)

Have a look what the booklet for
Hex(C09F72) contains.

Hex(C09F72)	3
<i>Conversions</i>	4
<i>Details</i>	6
<i>Harmonies</i>	11
<i>Previews</i>	23
<i>Color Blindness Simulation</i>	26
<i>CSS Examples</i>	29

Color

Hex(C09F72)

Conversions

Conversions Part 1

Format	Color
Hex	C09F72
RGB	192, 159, 114
RGB Percent	75%, 62%, 45%
CMY	0.2471, 0.3765, 0.5529
CMYK	0.00, 0.17, 0.41, 0.25
HSL	35°, 38%, 60%
HSV	35°, 41%, 75%
XYZ	37.1736, 37.2176, 21.1441
YIQ	163.7370, 34.1130, -6.9990

Conversions

Conversions Part 2

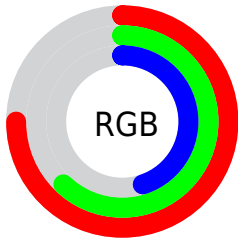
Format	Color
RYB	171, 192, 114
Decimal	12623730
CIELab	67.44, 6.00, 28.04
CIElCh	67, 28.679, 77.929
Yxy	37.2176, 0.3891, 0.3896
Android (android.graphics.Color)	4290813810 (0xFFC09F72)
YUV	163.7370, -24.5203, 24.7867
Hunter-Lab	61.0063, 2.0064, 22.1552

Details

The Hex color **C09F72** is a light color, and the websafe version is hex **CC9966**. A complement of this color would be **7293C0**, and the grayscale version is **A4A4A4**.

A 20% lighter version of the original color is **FAD6A6**, and **896C41** is the 20% darker color. If you saturate the color by 10%, you get **C0975F**, and if you desaturate by 10%, it is **C0A785**.

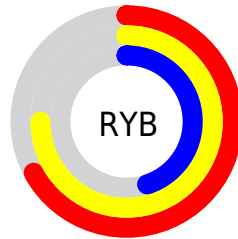
Distribution



Red (75%)

Green (62%)

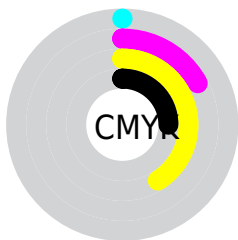
Blue (45%)



Red (67%)

Yellow (75%)

Blue (45%)

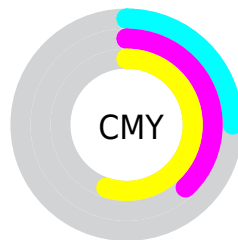


Cyan (0%)

Magenta (17%)

Yellow (41%)

Black (25%)



Cyan (25%)

Magenta (38%)

Yellow (55%)

Brightness & Saturation Gradients

These gradients show how the Hex color C09F72 changes by changing the brightness by 10 percent. The first figure shows a shift by +10% for each color and the second figure -10%.

Similar to the brightness gradients but the following saturation gradients show a change of the Hex color C09F72 by changing the saturation by 10% instead.

 C09F72

 C09F72

FFFFFF

 A48559

 FAD6A6

 896C41

 FFF2C2

 6E542A

 FFFFDE

 553D14

 FFFFFFFA

 3C2700

 241300

 000000

 C09F72

 C09F72

 C0975F

 C0A785

 C08F4C

 C0AF98

 C08738

 C0B7AC

 C07F25

 C0BFBF

 C07612

 C0C8D2

 C06F00

 C0D0E5

 C0D8F8

 C0E0FF

 C0E8FF

Harmonies

Analogous

The Analogous color harmony consists of three colors that are next to each other on the color wheel.



D2977F



C09F72



A7A773

Triad

The Triadic color harmony groups three colors that are evenly spaced from another and form a triangle on the color wheel.



C09F72



55B2B3



BB98C7

Complementary

The Complementary color scheme is a pair of colors which are on the opposite of each other on the color wheel.



C09F72



7293C0

Split Complementary

Split-complementary colors differ from the complementary color scheme. The scheme consists of three colors, the original color and two neighbors of the complement color.



99A1D5



C09F72



57B0CA

Square

The Square scheme is like the rectangle color scheme, but the four colors are evenly spaced on the color wheel.



C09F72



6CB299



74AAD6



D192B0

Rectangle

The Rectangle color scheme consists of four colors that form a rectangle on the color wheel.



C09F72



93AC7B



74AAD6



B19BCD

Sweetspot

The Sweet Spot groups the original color and five complimentary colors.



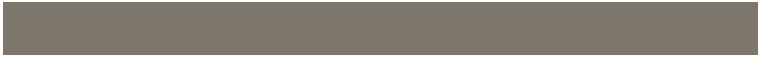
C09F72



FAEDDC



C07294



7D766B



FCFCFC



7D7D7D

Same Dimension

The Same Dimension uses a secret algorithm to generate beautiful new colors.



C09F72



FAC67F



BBC072



615D57



A15D00



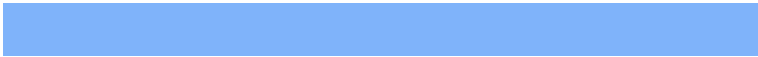
211300

Inverse Universe

The Inverse Universe completely reimagines the original color for something new.



7293C0



7FB3FA



7772C0



575B61



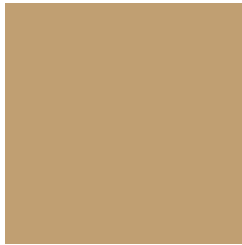
0044A1



000E21

Previews

White Background



This preview shows how the Hex color C09F72 looks on a white background.

Color Contrast Check

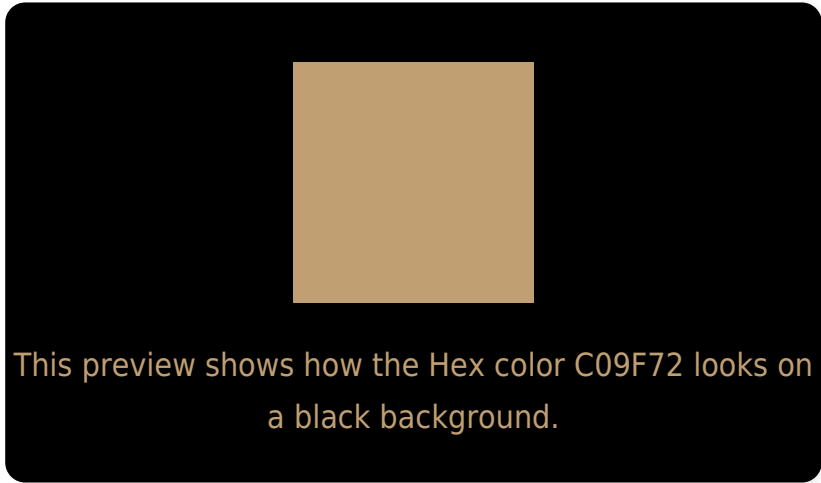
Large Text (above 18pt) WCAG AA × Fail

Any Text WCAG AA × Fail

Large Text (above 18pt) WCAG AAA × Fail

Any Text WCAG AAA × Fail

Black Background



Color Contrast Check

Large Text (above 18pt) WCAG AA ✓ Pass

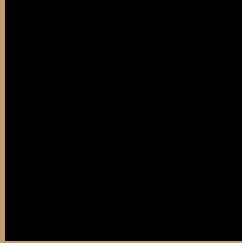
Any Text WCAG AA ✓ Pass

Large Text (above 18pt) WCAG AAA ✓ Pass

Any Text WCAG AAA ✓ Pass

If you want to check with other color combinations, try the [Color Contrast Checker](#).

Hex C09F72 Background



This preview shows how black text looks on a background with the Hex color C09F72.



This preview shows how white text looks on a background with the Hex color C09F72.

Color Blindness Simulation

Color vision deficiency is a very complex topic, and I could not describe the different causes any better than Wikipedia does, so if you want to learn more, you should check out their [article about color blindness](#).

Dichromacy



Original Color
C09F72

Protanopia
B1A474

Deuteranopia
C49D72



Tritanopia
C598A4

Trichromacy



Monochromacy



CSS Examples

Text

The CSS property to change the color of the text to Hex C09F72 is called "color". The color property can be set on classes, ids or directly on the HTML element.

This example shows how text in the color #C09F72 looks like.

```
.text, #text, p{  
    color:#C09F72  
}
```

If you want to add a text shadow in that color use the text-shadow property, you can generate a text shadow directly with our [CSS Text Shadow Generator](#).

Here you see how black text with a 4 pixel #C09F72 colored shadow looks like.

```
.shadow{ text-shadow: 4px 4px 2px #C09F72
}
```

Border

The CSS property to change the border of an element to Hex C09F72 is called "border". The border property can be set on classes, ids or directly on the HTML element.

This example shows the color as border, it can be applied via the CSS property "border" or "border-color".

```
.border, #border, table{ border:4px solid
#C09F72 }
```

If only the border color should be changed use the property `border-color`.

```
.border{ border-color:#C09F72 }
```

If you want to add a box shadow in that color use:

Here you see how a box with a 4 pixel #C09F72 colored shadow looks like.

```
.boxshadow{ -moz-box-shadow:4px 4px 4px  
4px #C09F72; -webkit-box-shadow:4px 4px  
4px 4px #C09F72; box-shadow:4px 4px 4px  
4px #C09F72 }
```

Background

The CSS property to change the background color of an element to Hex C09F72 is called "background". The background property can be set on classes, ids or directly on the HTML element.

```
.background, #background, body{  
background:#C09F72 }
```

If only the background color should be changed can be used:

```
.background{ background-color:#C09F72 }
```

This example shows the color as background, it is applied via the CSS property "background".

To optimize and compress your CSS code, you can use our [online CSS compressor and optimizer](#) based on csstidy. If you want to create a linear or radial gradient as background or border, check our [CSS Gradient Generator](#).

Hey! You found this booklet interesting? Support Converting Colors with the new Membership Option!

The pro membership hides all ads, plus gives you double the colors in the color bucket, and more awesome pro features!

[Learn more, Memberships starting at \\$2.50/m!](#)

**Follow me
on Twitter!**

@ConvertingColor