

# Converting Colors

Hex(C0ACA5)

Have a look what the booklet for  
Hex(C0ACA5) contains.

<b>Hex(C0ACA5)</b> .....	3
<i><b>Conversions</b></i> .....	4
<i><b>Details</b></i> .....	6
<i><b>Harmonies</b></i> .....	11
<i><b>Previews</b></i> .....	23
<i><b>Color Blindness Simulation</b></i> .....	26
<i><b>CSS Examples</b></i> .....	29

# **Color**

**Hex(C0ACA5)**

# Conversions

## Conversions Part 1

Format	Color
Hex	C0ACA5
RGB	192, 172, 165
RGB Percent	75%, 67%, 65%
CMY	0.2471, 0.3255, 0.3529
CMYK	0.00, 0.10, 0.14, 0.25
HSL	16°, 18%, 70%
HSV	16°, 14%, 75%
XYZ	43.2823, 43.4281, 41.6986
YIQ	177.1820, 14.1670, 2.0630

# Conversions

## Conversions Part 2

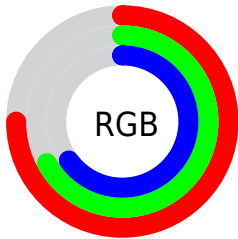
<b>Format</b>	<b>Color</b>
<a href="#">RYB</a>	<a href="#">192, 174, 165</a>
Decimal	<a href="#">12627109</a>
CIELab	<a href="#">71.84, 6.03, 6.22</a>
CIELCh	<a href="#">72, 8.664, 45.854</a>
Yxy	<a href="#">43.4281, 0.3371, 0.3382</a>
Android (android.graphics.Color)	<a href="#">4290817189 (0xFFC0ACA5)</a>
YUV	<a href="#">177.1820, -6.0057, 12.9954</a>
Hunter-Lab	<a href="#">65.9000, 1.9115, 8.6140</a>

# Details

The Hex color **C0ACA5** is a light color, and the websafe version is hex **999999**. A complement of this color would be **A5B9C0**, and the grayscale version is **B1B1B1**.

A 20% lighter version of the original color is **F9E3DC**, and **8A7871** is the 20% darker color. If you saturate the color by 10%, you get **C09E92**, and if you desaturate by 10%, it is **C0BAB8**.

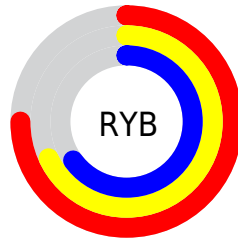
# Distribution



Red (75%)

Green (67%)

Blue (65%)



Red (75%)

Yellow (68%)

Blue (65%)

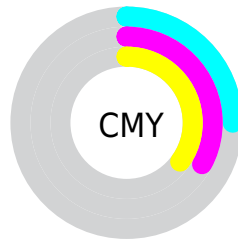


Cyan (0%)

Magenta (10%)

Yellow (14%)

Black (25%)



Cyan (25%)

Magenta (33%)

Yellow (35%)

# Brightness & Saturation Gradients

These gradients show how the Hex color C0ACA5 changes by changing the brightness by 10 percent. The first figure shows a shift by +10% for each color and the second figure -10%.

Similar to the brightness gradients but the following saturation gradients show a change of the Hex color C0ACA5 by changing the saturation by 10% instead.



 C0ACA5

 C0ACA5

FFFFFF

 A5918B

 F9E3DC

 8A7871

 FFFFF8

 715F59

 584741

 40312B

 2A1C17

 160200

 000000

 C0ACA5

 C0ACA5

 C09E92

 C0BAB8

 C0907F

 C0C8CB

 C0816B

 C0D7DF

 C07358

 C0E5F2

 C06545

 C0F3FF

 C05732

 C0FFFF

 C0481F

 C03A0B

 C03200

# Harmonies

## Analogous

The Analogous color harmony consists of three colors that are next to each other on the color wheel.



C1ABAC



C0ACA5



BAAEA1

# Triad

The Triadic color harmony groups three colors that are evenly spaced from another and form a triangle on the color wheel.



C0ACA5



A1B5AC



ADAFBF

# Complementary

The Complementary color scheme is a pair of colors which are on the opposite of each other on the color wheel.



C0ACA5



A5B9C0

# Split Complementary

Split-complementary colors differ from the complementary color scheme. The scheme consists of three colors, the original color and two neighbors of the complement color.



A4B2BF



C0ACA5



9DB5B4

# Square

The Square scheme is like the rectangle color scheme, but the four colors are evenly spaced on the color wheel.



C0ACA5



A9B3A5



9EB4BB



B7ADBB

# Rectangle

The Rectangle color scheme consists of four colors that form a rectangle on the color wheel.



C0ACA5



B5B0A0



9EB4BB



AAB0C0

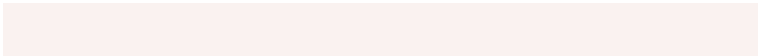


# Sweetspot

The Sweet Spot groups the original color and five complimentary colors.



C0ACA5



FAF2F0



C0A5B9



7D7877



FCFCFC



7D7D7D

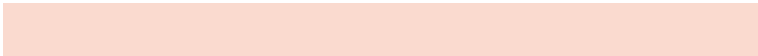


# Same Dimension

The Same Dimension uses a secret algorithm to generate beautiful new colors.



C0ACA5



FADACF



C0B9A5



615A57



A12A00



210900

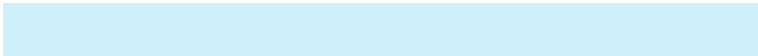


# Inverse Universe

The Inverse Universe completely reimagines the original color for something new.



A5B9C0



CFEFFA



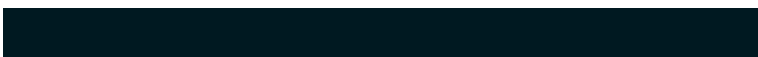
A5ACC0



575E61



0077A1



001921



# Previews

## White Background



This preview shows how the Hex color C0ACA5 looks on a white background.

## Color Contrast Check

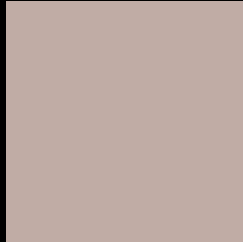
Large Text (above 18pt) WCAG AA × Fail

Any Text WCAG AA × Fail

Large Text (above 18pt) WCAG AAA × Fail

Any Text WCAG AAA × Fail

# Black Background



This preview shows how the Hex color C0ACA5 looks on a black background.

## Color Contrast Check

Large Text (above 18pt) WCAG AA ✓ Pass

Any Text WCAG AA ✓ Pass

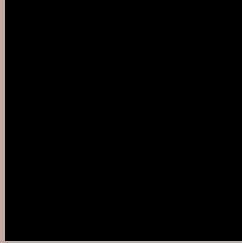
Large Text (above 18pt) WCAG AAA ✓ Pass

Any Text WCAG AAA ✓ Pass

If you want to check with other color combinations, try the [Color Contrast Checker](#).



## Hex C0ACA5 Background



This preview shows how black text looks on a background with the Hex color C0ACA5.



This preview shows how white text looks on a background with the Hex color C0ACA5.

# Color Blindness Simulation

Color vision deficiency is a very complex topic, and I could not describe the different causes any better than Wikipedia does, so if you want to learn more, you should check out their [article about color blindness](#).

## Dichromacy



**Original Color**  
C0ACA5

**Protanopia**  
B5AFA7

**Deuteranopia**  
C5AAA5



**Tritanopia**  
C2A9B7

# Trichromacy



**Original Color**  
C0ACA5

**Protanomaly**  
B9AE6

**Deuteranomaly**  
C3ABA5

**Tritanomaly**  
C1AAB0

# Monochromacy



**Original Color**  
C0ACA5

**Achromatopsia**  
B1B1B1

**Achromatomaly**  
B6AFAD

# CSS Examples

## Text

The CSS property to change the color of the text to Hex C0ACA5 is called "color". The color property can be set on classes, ids or directly on the HTML element.

This example shows how text in the color #C0ACA5 looks like.

```
.text, #text, p{  
    color:#C0ACA5  
}
```

If you want to add a text shadow in that color use the text-shadow property, you can generate a text shadow directly with our [CSS Text Shadow Generator](#).

Here you see how black text with a 4 pixel #C0ACA5 colored shadow looks like.

```
.shadow{ text-shadow: 4px 4px 2px #C0ACA5  
}
```

## Border

The CSS property to change the border of an element to Hex C0ACA5 is called "border". The border property can be set on classes, ids or directly on the HTML element.

This example shows the color as border, it can be applied via the CSS property "border" or "border-color".

```
.border, #border, table{ border:4px solid  
#C0ACA5 }
```

If only the border color should be changed use the property `border-color`.

```
.border{ border-color:#C0ACA5 }
```

If you want to add a box shadow in that color use:

Here you see how a box with a 4 pixel #C0ACA5 colored shadow looks like.

```
.boxshadow{ -moz-box-shadow:4px 4px 4px  
4px #C0ACA5; -webkit-box-shadow:4px 4px  
4px 4px #C0ACA5; box-shadow:4px 4px 4px  
4px #C0ACA5 }
```

# Background

The CSS property to change the background color of an element to Hex C0ACA5 is called "background". The background property can be set on classes, ids or directly on the HTML element.

```
.background, #background, body{  
background:#C0ACA5 }
```

If only the background color should be changed can be used:

```
.background{ background-color:#C0ACA5 }
```

This example shows the color as background, it is applied via the CSS property "background".

To optimize and compress your CSS code, you can use our [online CSS compressor and optimizer](#) based on csstidy. If you want to create a linear or radial gradient as background or border, check our [CSS Gradient Generator](#).



Hey! You found this booklet interesting? Support Converting Colors with the new Membership Option!

The pro membership hides all ads, plus gives you double the colors in the color bucket, and more awesome pro features!

**[Learn more, Memberships starting at \\$2.50/m!](#)**

**Follow me  
on Twitter!**

@ConvertingColor