

Converting Colors

Hex(C0ACAA)

Have a look what the booklet for
Hex(C0ACAA) contains.

Hex(C0ACAA)	3
<i>Conversions</i>	4
<i>Details</i>	6
<i>Harmonies</i>	11
<i>Previews</i>	23
<i>Color Blindness Simulation</i>	26
<i>CSS Examples</i>	29

Color

Hex(C0ACAA)

Conversions

Conversions Part 1

Format	Color
Hex	C0ACAA
RGB	192, 172, 170
RGB Percent	75%, 67%, 67%
CMY	0.2471, 0.3255, 0.3333
CMYK	0.00, 0.10, 0.11, 0.25
HSL	5°, 15%, 71%
HSV	5°, 11%, 75%
XYZ	43.7465, 43.6138, 44.1428
YIQ	177.7520, 12.5620, 3.6180

Conversions

Conversions Part 2

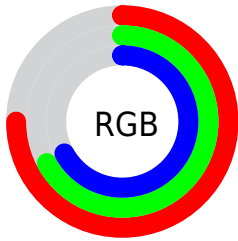
Format	Color
RYB	192, 172, 170
Decimal	12627114
CIELab	71.97, 6.87, 3.65
CIELCh	72, 7.775, 27.986
Yxy	43.6138, 0.3327, 0.3317
Android (android.graphics.Color)	4290817194 (0xFFC0ACAA)
YUV	177.7520, -3.8217, 12.4955
Hunter-Lab	66.0407, 2.6700, 6.5980

Details

The Hex color **C0ACAA** is a light color, and the websafe version is hex **999999**. A complement of this color would be **AABEC0**, and the grayscale version is **B2B2B2**.

A 20% lighter version of the original color is **F9E3E1**, and **8A7876** is the 20% darker color. If you saturate the color by 10%, you get **C09B97**, and if you desaturate by 10%, it is **C0BDBD**.

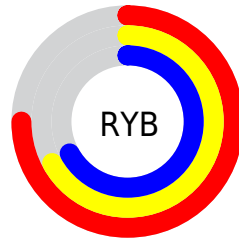
Distribution



Red (75%)

Green (67%)

Blue (67%)



Red (75%)

Yellow (67%)

Blue (67%)

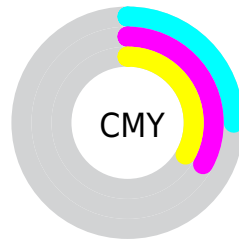


Cyan (0%)

Magenta (10%)

Yellow (11%)

Black (25%)



Cyan (25%)

Magenta (33%)

Yellow (33%)

Brightness & Saturation Gradients

These gradients show how the Hex color C0ACAA changes by changing the brightness by 10 percent. The first figure shows a shift by +10% for each color and the second figure -10%.

Similar to the brightness gradients but the following saturation gradients show a change of the Hex color C0ACAA by changing the saturation by 10% instead.

 C0ACAA

 C0ACAA


FFFFFF

 A59190

 F9E3E1

 8A7876

FFFFFFE

 715F5D

 584746

 41312F

 2A1C1B

 170200

 000000

 C0ACAA

 C0ACAA

 C09B97

 C0BDBD

 C08984

 C0CFD0

 C07870

 C0E0E4

 C0665D

 C0F2F7

 C0554A

 C0FFFF

 C04337

 C03224

 C02010

 C01100

Harmonies

Analogous

The Analogous color harmony consists of three colors that are next to each other on the color wheel.



BFACB1



C0ACAA



BDADA5

Triad

The Triadic color harmony groups three colors that are evenly spaced from another and form a triangle on the color wheel.



C0ACAA



A7B4A9



A9B1BE

Complementary

The Complementary color scheme is a pair of colors which are on the opposite of each other on the color wheel.



C0ACAA



AABECO

Split Complementary

Split-complementary colors differ from the complementary color scheme. The scheme consists of three colors, the original color and two neighbors of the complement color.



A2B3BC



C0ACAA



A1B5B0

Square

The Square scheme is like the rectangle color scheme, but the four colors are evenly spaced on the color wheel.



C0ACAA



AFB2A4



9FB4B7



B1AFBD

Rectangle

The Rectangle color scheme consists of four colors that form a rectangle on the color wheel.



C0ACAA



B9AFA3



9FB4B7



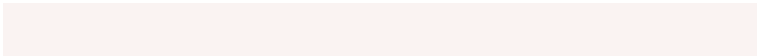
A6B2BE

Sweetspot

The Sweet Spot groups the original color and five complimentary colors.



C0ACAA



FAF3F2



C0AABE



7D7878



FCFCFC



7D7D7D

Same Dimension

The Same Dimension uses a secret algorithm to generate beautiful new colors.



C0ACAA



FADAD7



C0B7AA



615857



A10F00



210300

Inverse Universe

The Inverse Universe completely reimagines the original color for something new.



AABEC0



D7F7FA



AAB3C0



576061



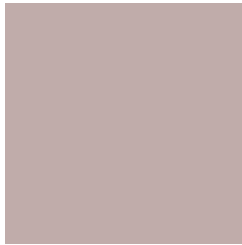
0092A1



001E21

Previews

White Background



This preview shows how the Hex color C0ACAA looks on a white background.

Color Contrast Check

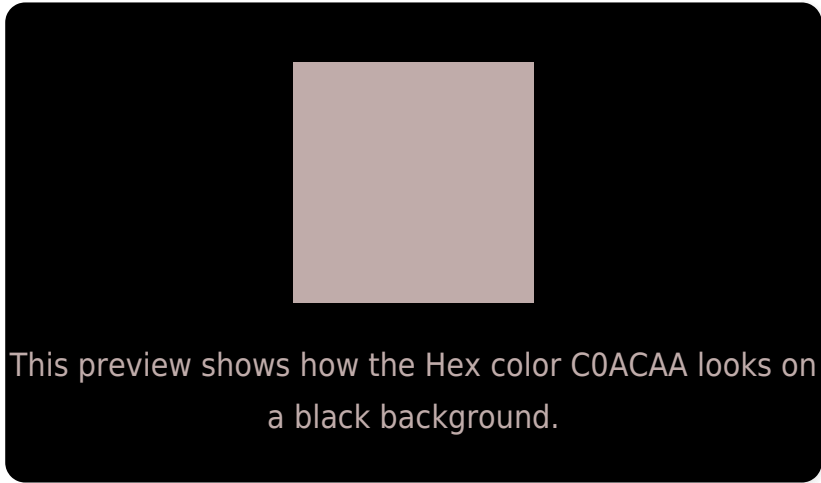
Large Text (above 18pt) WCAG AA × Fail

Any Text WCAG AA × Fail

Large Text (above 18pt) WCAG AAA × Fail

Any Text WCAG AAA × Fail

Black Background



Color Contrast Check

Large Text (above 18pt) WCAG AA ✓ Pass

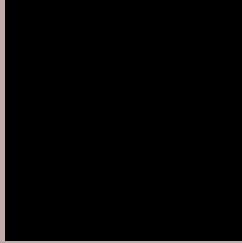
Any Text WCAG AA ✓ Pass

Large Text (above 18pt) WCAG AAA ✓ Pass

Any Text WCAG AAA ✓ Pass

If you want to check with other color combinations, try the [Color Contrast Checker](#).

Hex C0ACAA Background



This preview shows how black text looks on a background with the Hex color C0ACAA.



This preview shows how white text looks on a background with the Hex color C0ACAA.

Color Blindness Simulation

Color vision deficiency is a very complex topic, and I could not describe the different causes any better than Wikipedia does, so if you want to learn more, you should check out their [article about color blindness](#).

Dichromacy





Tritanopia
C2AAB7

Trichromacy



Original Color
C0ACAA

Protanomaly
B9AFAB

Deuteranomaly
C3ABAA

Tritanomaly
C1ABB2

Monochromacy



Original Color
C0ACAA

Achromatopsia
B2B2B2

Achromatomaly
B7B0AF

CSS Examples

Text

The CSS property to change the color of the text to Hex C0ACAA is called "color". The color property can be set on classes, ids or directly on the HTML element.

This example shows how text in the color #C0ACAA looks like.

```
.text, #text, p{  
    color:#C0ACAA  
}
```

If you want to add a text shadow in that color use the text-shadow property, you can generate a text shadow directly with our [CSS Text Shadow Generator](#).

Here you see how black text with a 4 pixel #C0ACAA colored shadow looks like.

```
.shadow{ text-shadow: 4px 4px 2px #C0ACAA
}
```

Border

The CSS property to change the border of an element to Hex C0ACAA is called "border". The border property can be set on classes, ids or directly on the HTML element.

This example shows the color as border, it can be applied via the CSS property "border" or "border-color".

```
.border, #border, table{ border:4px solid
#C0ACAA }
```

If only the border color should be changed use the property `border-color`.

```
.border{ border-color:#C0ACAA }
```

If you want to add a box shadow in that color use:

Here you see how a box with a 4 pixel `#C0ACAA` colored shadow looks like.

```
.boxshadow{ -moz-box-shadow:4px 4px 4px  
4px #C0ACAA; -webkit-box-shadow:4px 4px  
4px 4px #C0ACAA; box-shadow:4px 4px 4px  
4px #C0ACAA }
```

Background

The CSS property to change the background color of an element to Hex C0ACAA is called "background". The background property can be set on classes, ids or directly on the HTML element.

```
.background, #background, body{  
background:#C0ACAA }
```

If only the background color should be changed can be used:

```
.background{ background-color:#C0ACAA }
```

This example shows the color as background, it is applied via the CSS property "background".

To optimize and compress your CSS code, you can use our [online CSS compressor and optimizer](#) based on csstidy. If you want to create a linear or radial gradient as background or border, check our [CSS Gradient Generator](#).

Hey! You found this booklet interesting? Support Converting Colors with the new Membership Option!

The pro membership hides all ads, plus gives you double the colors in the color bucket, and more awesome pro features!

[Learn more, Memberships starting at \\$2.50/m!](#)

**Follow me
on Twitter!**

@ConvertingColor