

# Converting Colors

Hex(C0ACB0)

Have a look what the booklet for  
Hex(C0ACB0) contains.

<b>Hex(C0ACB0)</b> .....	3
<i><b>Conversions</b></i> .....	4
<i><b>Details</b></i> .....	6
<i><b>Harmonies</b></i> .....	11
<i><b>Previews</b></i> .....	23
<i><b>Color Blindness Simulation</b></i> .....	26
<i><b>CSS Examples</b></i> .....	29

# **Color**

**Hex(C0ACB0)**

# Conversions

## Conversions Part 1

Format	Color
Hex	C0ACB0
RGB	192, 172, 176
RGB Percent	75%, 67%, 69%
CMY	0.2471, 0.3255, 0.3098
CMYK	0.00, 0.10, 0.08, 0.25
HSL	348°, 14%, 71%
HSV	348°, 10%, 75%
XYZ	44.3272, 43.8461, 47.2011
YIQ	178.4360, 10.6360, 5.4840

# Conversions

## Conversions Part 2

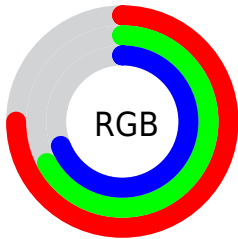
Format	Color
<a href="#">RYB</a>	<a href="#">192, 172, 176</a>
Decimal	<a href="#">12627120</a>
CIELab	<a href="#">72.13, 7.89, 0.57</a>
CIElCh	<a href="#">72, 7.916, 4.165</a>
Yxy	<a href="#">43.8461, 0.3274, 0.3239</a>
Android (android.graphics.Color)	<a href="#">4290817200 (0xFFC0ACB0)</a>
YUV	<a href="#">178.4360, -1.2009, 11.8956</a>
Hunter-Lab	<a href="#">66.2164, 3.6145, 4.0877</a>

# Details

The Hex color **C0ACB0** is a light color, and the websafe version is hex **999999**. A complement of this color would be **ACC0BC**, and the grayscale version is **B2B2B2**.

A 20% lighter version of the original color is **F8E3E8**, and **8A787C** is the 20% darker color. If you saturate the color by 10%, you get **C099A1**, and if you desaturate by 10%, it is **C0BFBF**.

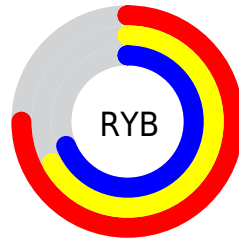
# Distribution



Red (75%)

Green (67%)

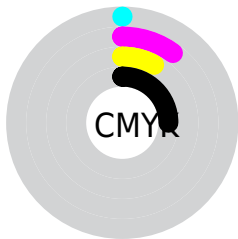
Blue (69%)



Red (75%)

Yellow (67%)

Blue (69%)

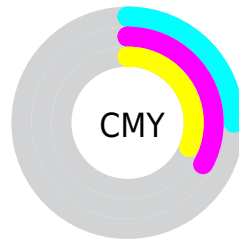


Cyan (0%)

Magenta (10%)

Yellow (8%)

Black (25%)



Cyan (25%)

Magenta (33%)

Yellow (31%)

# Brightness & Saturation Gradients

These gradients show how the Hex color C0ACB0 changes by changing the brightness by 10 percent. The first figure shows a shift by +10% for each color and the second figure -10%.

Similar to the brightness gradients but the following saturation gradients show a change of the Hex color C0ACB0 by changing the saturation by 10% instead.



 C0ACB0

 C0ACB0

FFFFFF

 A59195

 F8E3E8

 8A787C

 715F63

 58474B

 413134

 2B1C1F

 170207

 000000

 C0ACB0

 C0ACB0

 C099A1

 C0BFBF

 C08691

 C0D2CF

 C07282

 C0E6DE

 C05F73

 C0F9ED

 C04C63

 C0FFFD

 C03954

 C0FFFF

 C02644

 C01235

 C00026

# Harmonies

## Analogous

The Analogous color harmony consists of three colors that are next to each other on the color wheel.



BBADB7



C0ACB0



C0ADA9

# Triad

The Triadic color harmony groups three colors that are evenly spaced from another and form a triangle on the color wheel.



C0ACB0



AEB3A5



A3B3BE

# Complementary

The Complementary color scheme is a pair of colors which are on the opposite of each other on the color wheel.



C0ACB0



ACC0BC

# Split Complementary

Split-complementary colors differ from the complementary color scheme. The scheme consists of three colors, the original color and two neighbors of the complement color.



9FB5B9



C0ACB0



A6B5AA

# Square

The Square scheme is like the rectangle color scheme, but the four colors are evenly spaced on the color wheel.



C0ACB0



B6B1A2



A0B5B2



ABB1BF

# Rectangle

The Rectangle color scheme consists of four colors that form a rectangle on the color wheel.



C0ACB0



BEAEA5



A0B5B2



A1B4BC



# Sweetspot

The Sweet Spot groups the original color and five complimentary colors.



C0ACB0



FAF2F4



BCACC0



7D7879



FCFCFC



7D7D7D



# Same Dimension

The Same Dimension uses a secret algorithm to generate beautiful new colors.



C0ACB0



FAD9E0



C0B2AC



615759



A10020



210007



# Inverse Universe

The Inverse Universe completely reimagines the original color for something new.



C0ACB0



FAD9E0



ACBAC0



615759



A10020

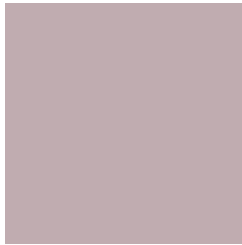


210007



# Previews

## White Background



This preview shows how the Hex color C0ACB0 looks on a white background.

## Color Contrast Check

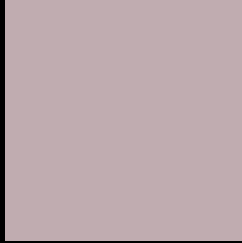
Large Text (above 18pt) WCAG AA × Fail

Any Text WCAG AA × Fail

Large Text (above 18pt) WCAG AAA × Fail

Any Text WCAG AAA × Fail

# Black Background



This preview shows how the Hex color C0ACB0 looks on a black background.

## Color Contrast Check

Large Text (above 18pt) WCAG AA ✓ Pass

Any Text WCAG AA ✓ Pass

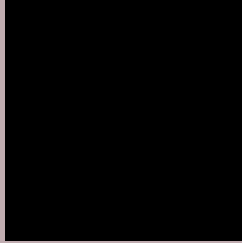
Large Text (above 18pt) WCAG AAA ✓ Pass

Any Text WCAG AAA ✓ Pass

If you want to check with other color combinations, try the [Color Contrast Checker](#).



## Hex C0ACB0 Background



This preview shows how black text looks on a background with the Hex color C0ACB0.



This preview shows how white text looks on a background with the Hex color C0ACB0.

# Color Blindness Simulation

Color vision deficiency is a very complex topic, and I could not describe the different causes any better than Wikipedia does, so if you want to learn more, you should check out their [article about color blindness](#).

## Dichromacy



**Original Color**  
C0ACB0

**Protanopia**  
B4B0B2

**Deuteranopia**  
C2ABB0



**Tritanopia**  
C1ABB8

# Trichromacy



**Original Color**  
C0ACB0

**Protanomaly**  
B8AFB1

**Deuteranomaly**  
C1ABB0

**Tritanomaly**  
C1ABB5

# Monochromacy



**Original Color**  
C0ACB0

**Achromatopsia**  
B2B2B2

**Achromatomaly**  
B7B0B1

# CSS Examples

## Text

The CSS property to change the color of the text to Hex C0ACB0 is called "color". The color property can be set on classes, ids or directly on the HTML element.

This example shows how text in the color #C0ACB0 looks like.

```
.text, #text, p{  
    color:#C0ACB0  
}
```

If you want to add a text shadow in that color use the text-shadow property, you can generate a text shadow directly with our [CSS Text Shadow Generator](#).

Here you see how black text with a 4 pixel #C0ACB0 colored shadow looks like.

```
.shadow{ text-shadow: 4px 4px 2px #C0ACB0
}
```

## Border

The CSS property to change the border of an element to Hex C0ACB0 is called "border". The border property can be set on classes, ids or directly on the HTML element.

This example shows the color as border, it can be applied via the CSS property "border" or "border-color".

```
.border, #border, table{ border:4px solid
#C0ACB0 }
```

If only the border color should be changed use the property `border-color`.

```
.border{ border-color:#C0ACB0 }
```

If you want to add a box shadow in that color use:

Here you see how a box with a 4 pixel `#C0ACB0` colored shadow looks like.

```
.boxshadow{ -moz-box-shadow:4px 4px 4px  
4px #C0ACB0; -webkit-box-shadow:4px 4px  
4px 4px #C0ACB0; box-shadow:4px 4px 4px  
4px #C0ACB0 }
```

# Background

The CSS property to change the background color of an element to Hex C0ACB0 is called "background". The background property can be set on classes, ids or directly on the HTML element.

```
.background, #background, body{  
background:#C0ACB0 }
```

If only the background color should be changed can be used:

```
.background{ background-color:#C0ACB0 }
```

This example shows the color as background, it is applied via the CSS property "background".

To optimize and compress your CSS code, you can use our [online CSS compressor and optimizer](#) based on csstidy. If you want to create a linear or radial gradient as background or border, check our [CSS Gradient Generator](#).



Hey! You found this booklet interesting? Support Converting Colors with the new Membership Option!

The pro membership hides all ads, plus gives you double the colors in the color bucket, and more awesome pro features!

**[Learn more, Memberships starting at \\$2.50/m!](#)**

**Follow me  
on Twitter!**

@ConvertingColor