

Converting Colors

Hex(C0B1AC)

Have a look what the booklet for
Hex(C0B1AC) contains.

Hex(C0B1AC)	3
<i>Conversions</i>	4
<i>Details</i>	6
<i>Harmonies</i>	11
<i>Previews</i>	23
<i>Color Blindness Simulation</i>	26
<i>CSS Examples</i>	29

Color

Hex(C0B1AC)

Conversions

Conversions Part 1

Format	Color
Hex	C0B1AC
RGB	192, 177, 172
RGB Percent	75%, 69%, 67%
CMY	0.2471, 0.3059, 0.3255
CMYK	0.00, 0.08, 0.10, 0.25
HSL	15°, 14%, 71%
HSV	15°, 10%, 75%
XYZ	44.9068, 45.6293, 45.4702
YIQ	180.9150, 10.5450, 1.6250

Conversions

Conversions Part 2

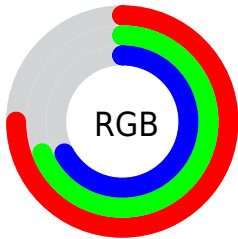
Format	Color
RYB	192, 179, 172
Decimal	12628396
CIELab	73.30, 4.50, 4.48
CIELCh	73, 6.347, 44.902
Yxy	45.6293, 0.3302, 0.3355
Android (android.graphics.Color)	4290818476 (0xFFC0B1AC)
YUV	180.9150, -4.3951, 9.7215
Hunter-Lab	67.5495, 0.4549, 7.3742

Details

The Hex color **C0B1AC** is a light color, and the websafe version is hex **CCCCCC**. A complement of this color would be **ACBBC0**, and the grayscale version is **B5B5B5**.

A 20% lighter version of the original color is **F8E9E3**, and **8A7C78** is the 20% darker color. If you saturate the color by 10%, you get **C0A399**, and if you desaturate by 10%, it is **C0BFBF**.

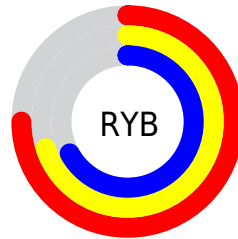
Distribution



Red (75%)

Green (69%)

Blue (67%)



Red (75%)

Yellow (70%)

Blue (67%)

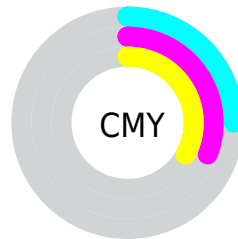


Cyan (0%)

Magenta (8%)

Yellow (10%)

Black (25%)



Cyan (25%)

Magenta (31%)

Yellow (33%)

Brightness & Saturation Gradients

These gradients show how the Hex color C0B1AC changes by changing the brightness by 10 percent. The first figure shows a shift by +10% for each color and the second figure -10%.

Similar to the brightness gradients but the following saturation gradients show a change of the Hex color C0B1AC by changing the saturation by 10% instead.

 C0B1AC

 C0B1AC

FFFFFF

 A59691

 F8E9E3

 8A7C78

 71645F

 584C47

 413531

 2B201C

 170801

 000000

 C0B1AC

 C0B1AC

 C0A399

 C0BFBF

 C09486

 C0CED2

 C08672

 C0DCE6

 C0775F

 C0EBF9

 C0694C

 C0F9FF

 C05B39

 C0FFFF

 C04C26

 C03E12

 C03000

Harmonies

Analogous

The Analogous color harmony consists of three colors that are next to each other on the color wheel.



C1B0B1



C0B1AC



BCB3A9

Triad

The Triadic color harmony groups three colors that are evenly spaced from another and form a triangle on the color wheel.



C0B1AC



A9B7B1



B2B3BF

Complementary

The Complementary color scheme is a pair of colors which are on the opposite of each other on the color wheel.



COB1AC



ACBBC0

Split Complementary

Split-complementary colors differ from the complementary color scheme. The scheme consists of three colors, the original color and two neighbors of the complement color.



ABB5BF



C0B1AC



A6B8B7

Square

The Square scheme is like the rectangle color scheme, but the four colors are evenly spaced on the color wheel.



C0B1AC



AFB6AC



A7B7BC



B9B2BC

Rectangle

The Rectangle color scheme consists of four colors that form a rectangle on the color wheel.



C0B1AC



B8B4A8



A7B7BC



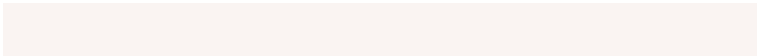
AFB4BF

Sweetspot

The Sweet Spot groups the original color and five complimentary colors.



COB1AC



FAF4F2



C0ACBB



7D7978



FCFCFC



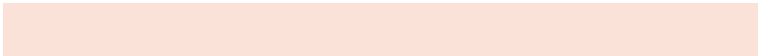
7D7D7D

Same Dimension

The Same Dimension uses a secret algorithm to generate beautiful new colors.



COB1AC



FAE2D9



COBBAC



615A57



A12800



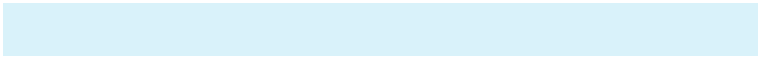
210800

Inverse Universe

The Inverse Universe completely reimagines the original color for something new.



ACBBC0



D9F2FA



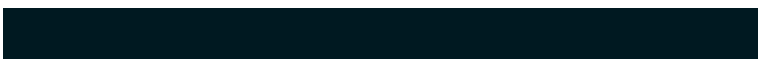
ACB1C0



575E61



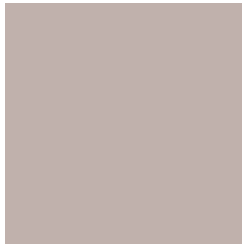
0078A1



001921

Previews

White Background



This preview shows how the Hex color C0B1AC looks on a white background.

Color Contrast Check

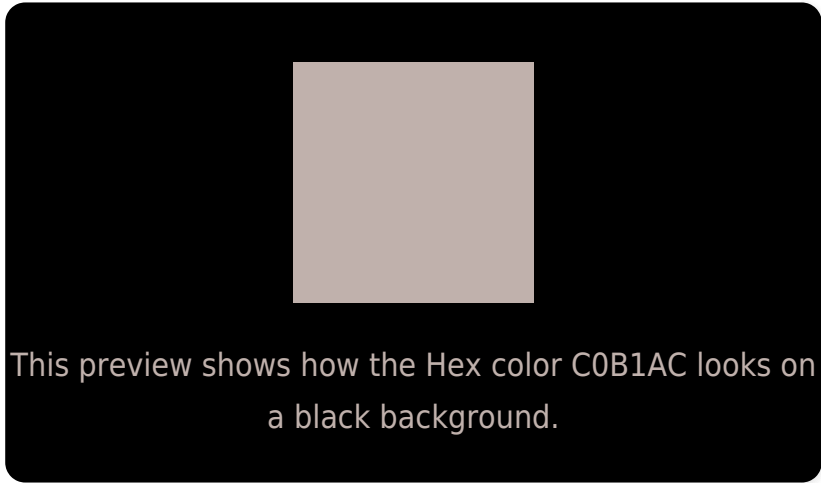
Large Text (above 18pt) WCAG AA × Fail

Any Text WCAG AA × Fail

Large Text (above 18pt) WCAG AAA × Fail

Any Text WCAG AAA × Fail

Black Background



Color Contrast Check

Large Text (above 18pt) WCAG AA ✓ Pass

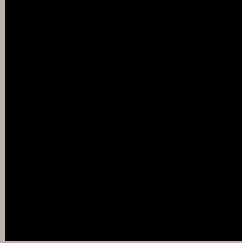
Any Text WCAG AA ✓ Pass

Large Text (above 18pt) WCAG AAA ✓ Pass

Any Text WCAG AAA ✓ Pass

If you want to check with other color combinations, try the [Color Contrast Checker](#).

Hex C0B1AC Background



This preview shows how black text looks on a background with the Hex color C0B1AC.



This preview shows how white text looks on a background with the Hex color C0B1AC.

Color Blindness Simulation

Color vision deficiency is a very complex topic, and I could not describe the different causes any better than Wikipedia does, so if you want to learn more, you should check out their [article about color blindness](#).

Dichromacy



Original Color
C0B1AC

Protanopia
B9B3AD

Deuteranopia
C8AEAD

Trichromacy



Original Color
C0B1AC

Protanomaly
BCB2AD

Deuteranomaly
C5AFAD

Tritanomaly
C1B0B6

Monochromacy



Original Color
C0B1AC

Achromatopsia
B5B5B5

Achromatomaly
B9B4B2

CSS Examples

Text

The CSS property to change the color of the text to Hex C0B1AC is called "color". The color property can be set on classes, ids or directly on the HTML element.

This example shows how text in the color #C0B1AC looks like.

```
.text, #text, p{  
    color:#C0B1AC  
}
```

If you want to add a text shadow in that color use the text-shadow property, you can generate a text shadow directly with our [CSS Text Shadow Generator](#).

Here you see how black text with a 4 pixel #C0B1AC colored shadow looks like.

```
.shadow{ text-shadow: 4px 4px 2px #C0B1AC }  
}
```

Border

The CSS property to change the border of an element to Hex C0B1AC is called "border". The border property can be set on classes, ids or directly on the HTML element.

This example shows the color as border, it can be applied via the CSS property "border" or "border-color".

```
.border, #border, table{ border:4px solid #C0B1AC }  
}
```

If only the border color should be changed use the property `border-color`.

```
.border{ border-color:#C0B1AC }
```

If you want to add a box shadow in that color use:

Here you see how a box with a 4 pixel #C0B1AC colored shadow looks like.

```
.boxshadow{ -moz-box-shadow:4px 4px 4px  
4px #C0B1AC; -webkit-box-shadow:4px 4px  
4px 4px #C0B1AC; box-shadow:4px 4px 4px  
4px #C0B1AC }
```

Background

The CSS property to change the background color of an element to Hex C0B1AC is called "background". The background property can be set on classes, ids or directly on the HTML element.

```
.background, #background, body{  
background:#C0B1AC }
```

If only the background color should be changed can be used:

```
.background{ background-color:#C0B1AC }
```

This example shows the color as background, it is applied via the CSS property "background".

To optimize and compress your CSS code, you can use our [online CSS compressor and optimizer](#) based on csstidy. If you want to create a linear or radial gradient as background or border, check our [CSS Gradient Generator](#).

Hey! You found this booklet interesting? Support Converting Colors with the new Membership Option!

The pro membership hides all ads, plus gives you double the colors in the color bucket, and more awesome pro features!

[Learn more, Memberships starting at \\$2.50/m!](#)

**Follow me
on Twitter!**

@ConvertingColor