

Converting Colors

Hex(C17D79)

Have a look what the booklet for
Hex(C17D79) contains.

Hex(C17D79)	3
<i>Conversions</i>	4
<i>Details</i>	6
<i>Harmonies</i>	11
<i>Previews</i>	23
<i>Color Blindness Simulation</i>	26
<i>CSS Examples</i>	29

Color

Hex(C17D79)

Conversions

Conversions Part 1

Format	Color
Hex	C17D79
RGB	193, 125, 121
RGB Percent	76%, 49%, 47%
CMY	0.2431, 0.5098, 0.5255
CMYK	0.00, 0.35, 0.37, 0.24
HSL	3°, 37%, 62%
HSV	3°, 37%, 76%
XYZ	32.7771, 27.3852, 21.6475
YIQ	144.8760, 41.8120, 13.1720

Conversions

Conversions Part 2

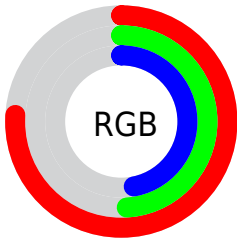
Format	Color
R_{YB}	193, 125, 121
Decimal	12680569
CIE Lab	59.33, 25.93, 13.15
CIE LCh	59, 29.077, 26.885
Yxy	27.3852, 0.4007, 0.3347
Android (android.graphics.Color)	4290870649 (0xFFC17D79)
YUV	144.8760, -11.7709, 42.2047
Hunter-Lab	52.3308, 20.2235, 12.1053

Details

The Hex color **C17D79** is a dark color, and the websafe version is hex **CC9999**. A complement of this color would be **79BDC1**, and the grayscale version is **919191**.

A 20% lighter version of the original color is **FBB2AD**, and **894B49** is the 20% darker color. If you saturate the color by 10%, you get **C16B66**, and if you desaturate by 10%, it is **C18F8C**.

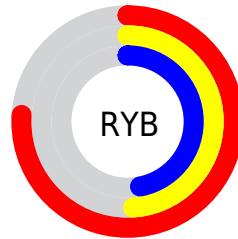
Distribution



Red (76%)

Green (49%)

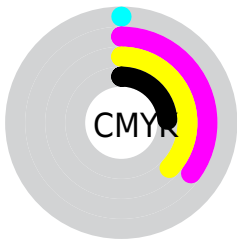
Blue (47%)



Red (76%)

Yellow (49%)

Blue (47%)

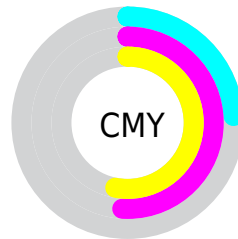


Cyan (0%)

Magenta (35%)

Yellow (37%)

Black (24%)



Cyan (24%)

Magenta (51%)

Yellow (53%)

Brightness & Saturation Gradients

These gradients show how the Hex color C17D79 changes by changing the brightness by 10 percent. The first figure shows a shift by +10% for each color and the second figure -10%.

Similar to the brightness gradients but the following saturation gradients show a change of the Hex color C17D79 by changing the saturation by 10% instead.

 C17D79

 C17D79

FFFFFF

 A56460

 FBB2AD

 894B49

 FFCEC9

 6E3332

 FFEAE5

 541C1D

 3B0504

 250001

 000000

 C17D79

 C17D79

 C16B66

 C18F8C

 C15952

 C1A1A0

 C1463F

 C1B4B3

 C1342C

 C1C6C6

 C12219

 C1D8DA

 C11005

 C1EAED

 C10B00

 C1FDFF

 C1FFFF

Harmonies

Analogous

The Analogous color harmony consists of three colors that are next to each other on the color wheel.



BE7C93



C17D79



B78465

Triad

The Triadic color harmony groups three colors that are evenly spaced from another and form a triangle on the color wheel.



C17D79



6B9A72



6892C1

Complementary

The Complementary color scheme is a pair of colors which are on the opposite of each other on the color wheel.



C17D79



79BDC1

Split Complementary

Split-complementary colors differ from the complementary color scheme. The scheme consists of three colors, the original color and two neighbors of the complement color.



4399B9



C17D79



4C9D8B

Square

The Square scheme is like the rectangle color scheme, but the four colors are evenly spaced on the color wheel.



C17D79



889461



379CA5



8E89BC

Rectangle

The Rectangle color scheme consists of four colors that form a rectangle on the color wheel.



C17D79



AA895D



379CA5



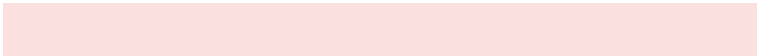
5B95C0

Sweetspot

The Sweet Spot groups the original color and five complimentary colors.



C17D79



FAE0DE



C179BD



7D6E6D



FCFCFC



7D7D7D

Same Dimension

The Same Dimension uses a secret algorithm to generate beautiful new colors.



C17D79



FA9089



C1A179



615857



A10900



210200

Inverse Universe

The Inverse Universe completely reimagines the original color for something new.



79BDC1



89F4FA



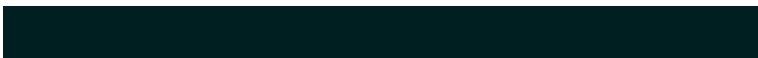
7999C1



576061



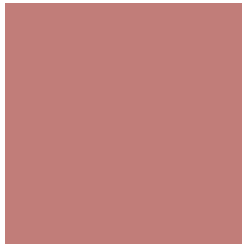
0098A1



001F21

Previews

White Background



This preview shows how the Hex color C17D79 looks on a white background.

Color Contrast Check

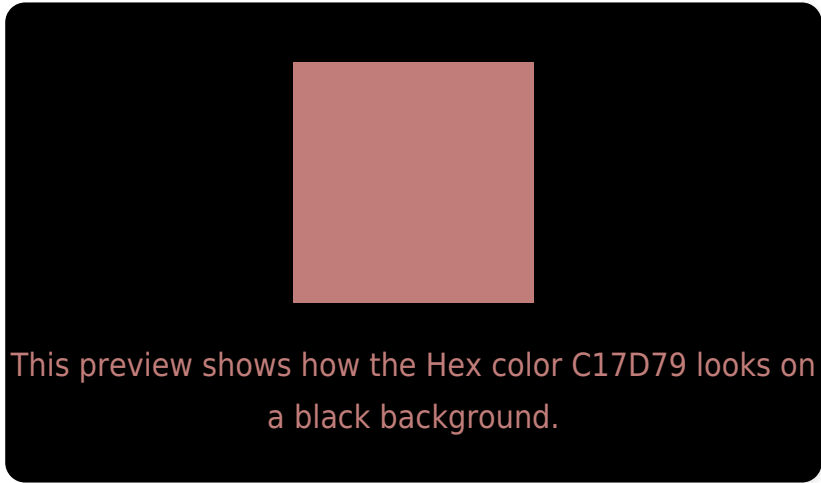
Large Text (above 18pt) WCAG AA ✓ Pass

Any Text WCAG AA ✗ Fail

Large Text (above 18pt) WCAG AAA ✗ Fail

Any Text WCAG AAA ✗ Fail

Black Background



Color Contrast Check

Large Text (above 18pt) WCAG AA ✓ Pass

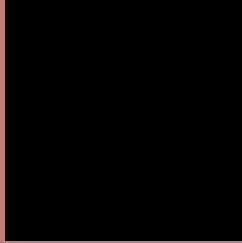
Any Text WCAG AA ✓ Pass

Large Text (above 18pt) WCAG AAA ✓ Pass

Any Text WCAG AAA × Fail

If you want to check with other color combinations, try the [Color Contrast Checker](#).

Hex C17D79 Background



This preview shows how black text looks on a background with the Hex color C17D79.




This preview shows how white text looks on a background with the Hex color C17D79.

Color Blindness Simulation

Color vision deficiency is a very complex topic, and I could not describe the different causes any better than Wikipedia does, so if you want to learn more, you should check out their [article about color blindness](#).

Dichromacy





Tritanopia
C27B84

Trichromacy



Original Color
C17D79

Protanomaly
A5887F

Deuteranomaly
B08578

Tritanomaly
C27C80

Monochromacy



Original Color
C17D79

Achromatopsia
919191

Achromatomaly
A28A88

CSS Examples

Text

The CSS property to change the color of the text to Hex C17D79 is called "color". The color property can be set on classes, ids or directly on the HTML element.

This example shows how text in the color #C17D79 looks like.

```
.text, #text, p{  
    color:#C17D79  
}
```

If you want to add a text shadow in that color use the text-shadow property, you can generate a text shadow directly with our [CSS Text Shadow Generator](#).

Here you see how black text with a 4 pixel #C17D79 colored shadow looks like.

```
.shadow{ text-shadow: 4px 4px 2px #C17D79
}
```

Border

The CSS property to change the border of an element to Hex C17D79 is called "border". The border property can be set on classes, ids or directly on the HTML element.

This example shows the color as border, it can be applied via the CSS property "border" or "border-color".

```
.border, #border, table{ border:4px solid
#C17D79 }
```

If only the border color should be changed use the property `border-color`.

```
.border{ border-color:#C17D79 }
```

If you want to add a box shadow in that color use:

Here you see how a box with a 4 pixel #C17D79 colored shadow looks like.

```
.boxshadow{ -moz-box-shadow:4px 4px 4px  
4px #C17D79; -webkit-box-shadow:4px 4px  
4px 4px #C17D79; box-shadow:4px 4px 4px  
4px #C17D79 }
```

Background

The CSS property to change the background color of an element to Hex C17D79 is called "background". The background property can be set on classes, ids or directly on the HTML element.

```
.background, #background, body{  
background:#C17D79 }
```

If only the background color should be changed can be used:

```
.background{ background-color:#C17D79 }
```

This example shows the color as background, it is applied via the CSS property "background".

To optimize and compress your CSS code, you can use our [online CSS compressor and optimizer](#) based on csstidy. If you want to create a linear or radial gradient as background or border, check our [CSS Gradient Generator](#).

Hey! You found this booklet interesting? Support Converting Colors with the new Membership Option!

The pro membership hides all ads, plus gives you double the colors in the color bucket, and more awesome pro features!

[Learn more, Memberships starting at \\$2.50/m!](#)

**Follow me
on Twitter!**

@ConvertingColor